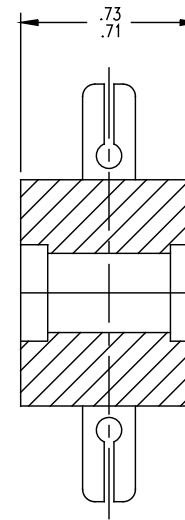
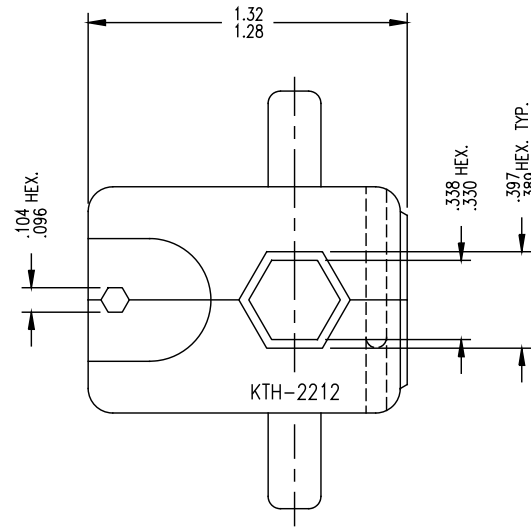
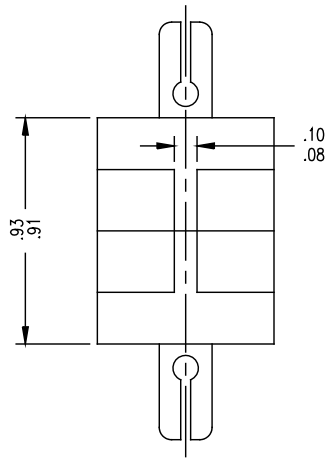


GSD

KTH-2212



- NOTES:  
 1. FOR USE WITH BOEING S280W503-4 & ADAMS RUSSELL FC28Z CABLES.  
 2. FINISH: BLACK OXIDE

REVISIONS

ISSUE	CHANGES
0	ER 33827 KH 04/09/92

JCA2656

SCALE 2:1

APPROX SURFACE AREA

WAS: E-17358-2

USED ON

REF: BOEING

CRIMP DIE

DRAWN JCA DATE 04/06/92

DESIGN JT DATE 04/07/92

APPR. DATE

**KINGS**  
 ELECTRONICS CO., INC.  
 TUCKAHOE, NEW YORK 10707

GSD

KTH-2212