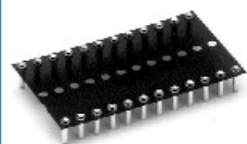
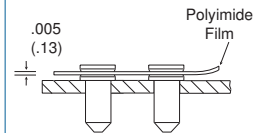


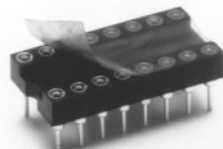
Table of Models



Description: Peel-A-Way® (KS)
 Material: Polyimide Film
 Index: -269°C to 400°C (-452°F to 752°F)



Options



Tape Sealant - add 3M to end of part number

- Removable tape seal protects plated contact in harsh environments
- Sealed socket will not allow dirt and other contaminants to enter socket chamber and become entrapped behind contact fingers
- Spray flux without contaminating contact area

Material

Silicone Backed Polyimide Film, -74°C to 260°C (-100°F to 500°F)
 Intermittent to 371°C (700°F)

Features:

- Peel away terminal carrier after soldering.
- Disposable carrier.
- Complete soldering visibility on both sides of PCB.
- Maximum air flow.
- Better flux rinse.
- No contact damage due to terminal carrier insertion.
- No contact pull out due to extraction of terminal carrier.

Specifications:

Terminals:

Brass - Copper Alloy
 (C36000) ASTM-B-16

Contacts:

Beryllium Copper - Copper Alloy
 (C17200) ASTM-B-194

Solder Preform:

Standard: 63Sn/37Pb
 Lead-free: 95.5Sn/4.0Ag/0.5Cu

Plating:

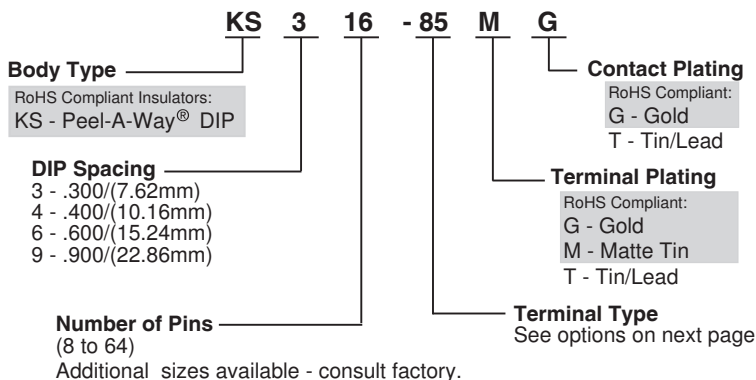
G - Gold over Nickel
 M - Matte Tin over Nickel
 T - Tin/Lead over Nickel

Gold per MIL-G-45204
 Matte Tin per ASTM545-97
 Tin/Lead per MIL-P-81728
 Nickel per QQ-N-290

Solder Preform Terminals

Tin/Lead: Type -150 Lead-free: Type -811	Tin/Lead: Type -151 Lead-free: Type -812	Tin/Lead: Type -111 Lead-free: Type -810
		<p>Peel-A-Way® only</p>

How To Order



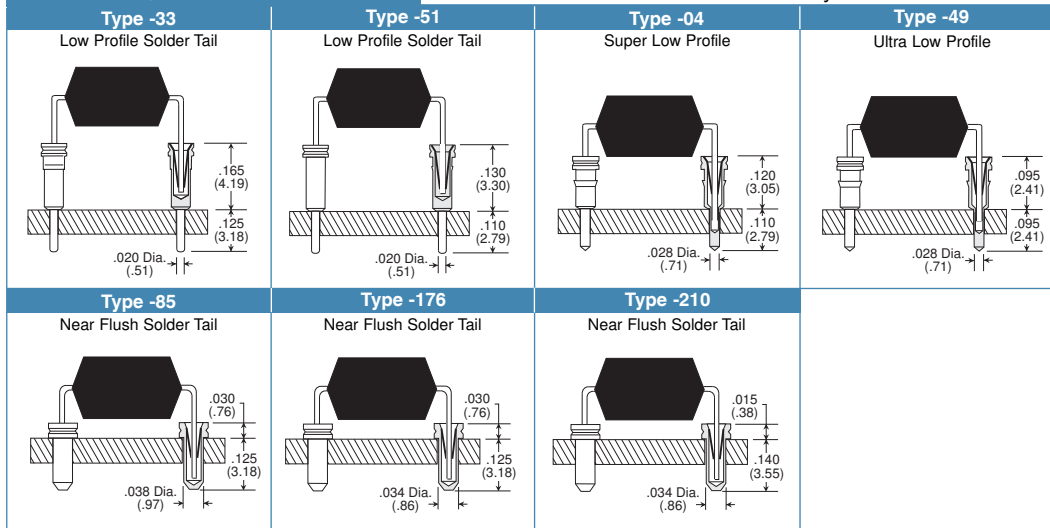
Note: Terminals plated with Matte Tin are available only with Gold plated contacts.
 Quick-Turn delivery is not available on products with Matte Tin plating.



5 Energy Way, West Warwick, RI 02893 USA
 Tel: 800.424.9850 | 401.823.5200
 Fax: 401.823.8723
 info@advanced.com | www.advanced.com
 Cat. 16 Rev. 1

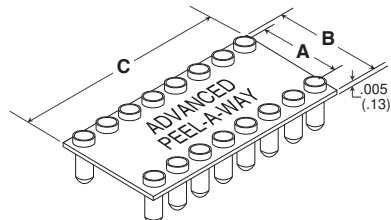
Additional standard and custom terminals available.
See Terminals section online or consult factory.

Standard Quick-Turn Terminals

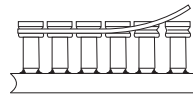


Note: Terminals shown with insulator removed.

Dimensional Information

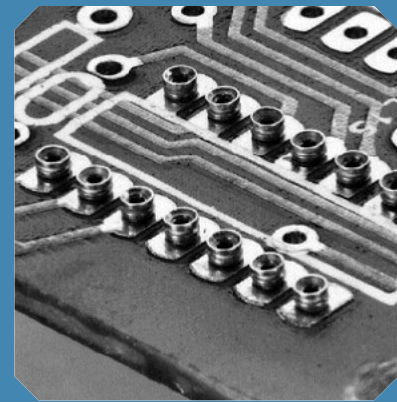


# of Pins	A	B	C
8	.300 (7.62)	.400 (10.16)	.400 (10.16)
10	.300 (7.62)	.400 (10.16)	.500 (12.70)
12	.300 (7.62)	.400 (10.16)	.600 (15.24)
14	.300 (7.62)	.400 (10.16)	.700 (17.78)
16	.300 (7.62)	.400 (10.16)	.800 (20.32)
18	.300 (7.62)	.400 (10.16)	.900 (22.86)
20	.300 (7.62)	.400 (10.16)	1.000 (25.40)
22	.300 (7.62)	.400 (10.16)	1.100 (27.94)
24	.300 (7.62)	.400 (10.16)	1.200 (30.48)
28	.300 (7.62)	.400 (10.16)	1.400 (35.56)
40	.300 (7.62)	.400 (10.16)	2.000 (50.80)
16	.400 (10.16)	.500 (12.70)	.800 (20.32)
20	.400 (10.16)	.500 (12.70)	1.000 (25.40)
22	.400 (10.16)	.500 (12.70)	1.100 (27.94)
24	.400 (10.16)	.500 (12.70)	1.200 (30.48)
28	.400 (10.16)	.500 (12.70)	1.400 (35.56)
32	.400 (10.16)	.500 (12.70)	1.600 (40.64)

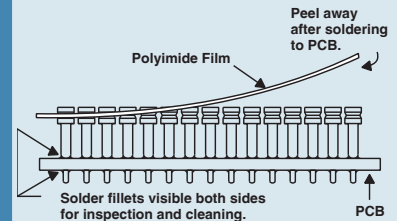


Surface Mount Options Available

# of Pins	A	B	C
10	.600 (15.24)	.700 (17.76)	.500 (12.70)
18	.600 (15.24)	.700 (17.76)	.900 (22.86)
20	.600 (15.24)	.700 (17.76)	1.000 (25.40)
22	.600 (15.24)	.700 (17.76)	1.100 (27.94)
24	.600 (15.24)	.700 (17.76)	1.200 (30.48)
28	.600 (15.24)	.700 (17.76)	1.400 (35.56)
32	.600 (15.24)	.700 (17.76)	1.600 (40.64)
36	.600 (15.24)	.700 (17.76)	1.800 (45.72)
40	.600 (15.24)	.700 (17.76)	2.000 (50.80)
42	.600 (15.24)	.700 (17.76)	2.100 (53.34)
48	.600 (15.24)	.700 (17.76)	2.400 (60.96)
64	.600 (15.24)	.700 (17.76)	3.200 (81.28)
32	.900 (22.86)	1.000 (25.40)	1.600 (40.64)
36	.900 (22.86)	1.000 (25.40)	1.800 (45.72)
40	.900 (22.86)	1.000 (25.40)	2.000 (50.80)
52	.900 (22.86)	1.000 (25.40)	2.600 (66.04)
56	.900 (22.86)	1.000 (25.40)	2.800 (71.12)
64	.900 (22.86)	1.000 (25.40)	3.200 (81.28)



How To Use:



1. Place socket on PC board.
2. Send PC board and socket through soldering operation.
3. Peel away polyimide film carrier for complete solder joint visibility or leave in place for added stability.

Available Online:

- RoHS Qualification Test Report



5 Energy Way, West Warwick, RI 02893 USA
Tel: 800.424.9850 | 401.823.5200
Fax: 401.823.8723
info@advanced.com | www.advanced.com
Cat. 16 Rev. 1