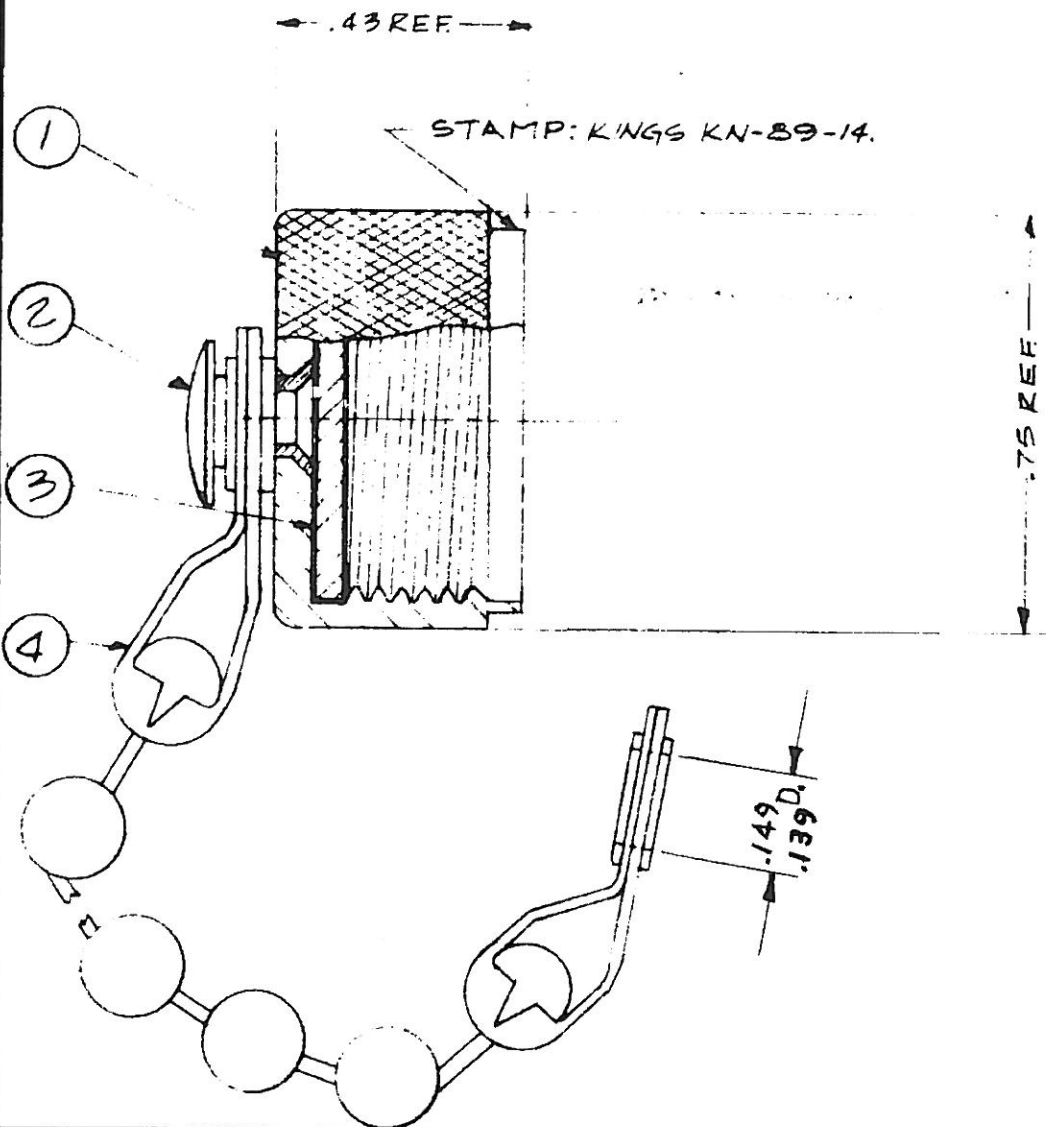


DASH NO.	M CODE	MADE FROM
----------	--------	-----------

REVISIONS	
ISSUE	CHANGES
1	CN 17621 D NM 7SEP77
2	CN 32236 E KH 25 MAY 90



USED ON:	
REF: D.O.D. SM-A-912729-1	
FINISH	
SPEC.	
MATL.	
SPEC.	
"N" CAP & CHAIN	
DRAWN NM	DATE 7SEP77
APPR. NM	DATE 8SEP77

UNLESS OTHERWISE SPECIFIED:

1. TOLERANCES: FRACTIONS & 2 PLACE DECIMALS $\pm .010$
3 PLACE DECIMALS $\pm .004$
ANGLES $\pm 0^\circ 30'$
2. REMOVE ALL BURRS, BREAK SHARP EDGES .005 MAX
3. NO FILLETS PERMITTED.
4. SURFACE ROUGHNESS 63 MICROINCHES RMS MAX.
5. ALL DIMENSIONS PRIOR TO PLATING.

KINGS ELECTRONICS
40 MARBLEDALE ROAD
TUCKAHOE, N. Y. 10707

KN-89-14
(SHEET 1 OF 2)

