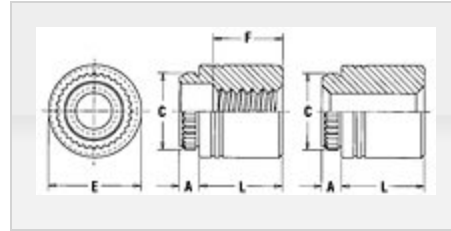


**Part # KFSE-440-4, Broaching Standoffs - Types KFE, KFSE - Unified**

**Type KFE and KFSE** - Broaching standoffs, threaded or unthreaded for stacking or spacing.



Specifications

**Thread Size** .112-40 (#4-40)

**Thread Code** 440

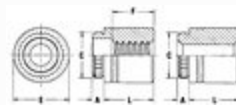
**Length Code** 4

**A (Shank) Max.** .060 in

**Min. Sheet Thickness** .060 in

**Hole Size in Sheet + .003 - .000** .166 in

**C ± .003** .184 in



**E ± .005** .219 in

**F** .125 in

**L - Length ± .005** .125 in

**Min. Dist. Hole C/L to Edge** .170 in

**For Use in Sheet Hardness<sup>1</sup>** HRB 70 / HB 125 or Less  
 PC Board

**Thread Specification** Internal, ASME B1.1, 2B

<b>Fastener Material</b>	300 Series Stainless Steel
--------------------------	----------------------------

<b>Standard Finish</b>	Passivated and/or tested per ASTM A380
------------------------	--

<b>CAD Supplier</b>	PennEngineering® (PEM®)
---------------------	-------------------------

<sup>1</sup> HRB - Hardness Rockwell "B" Scale. HB - Hardness Brinell.