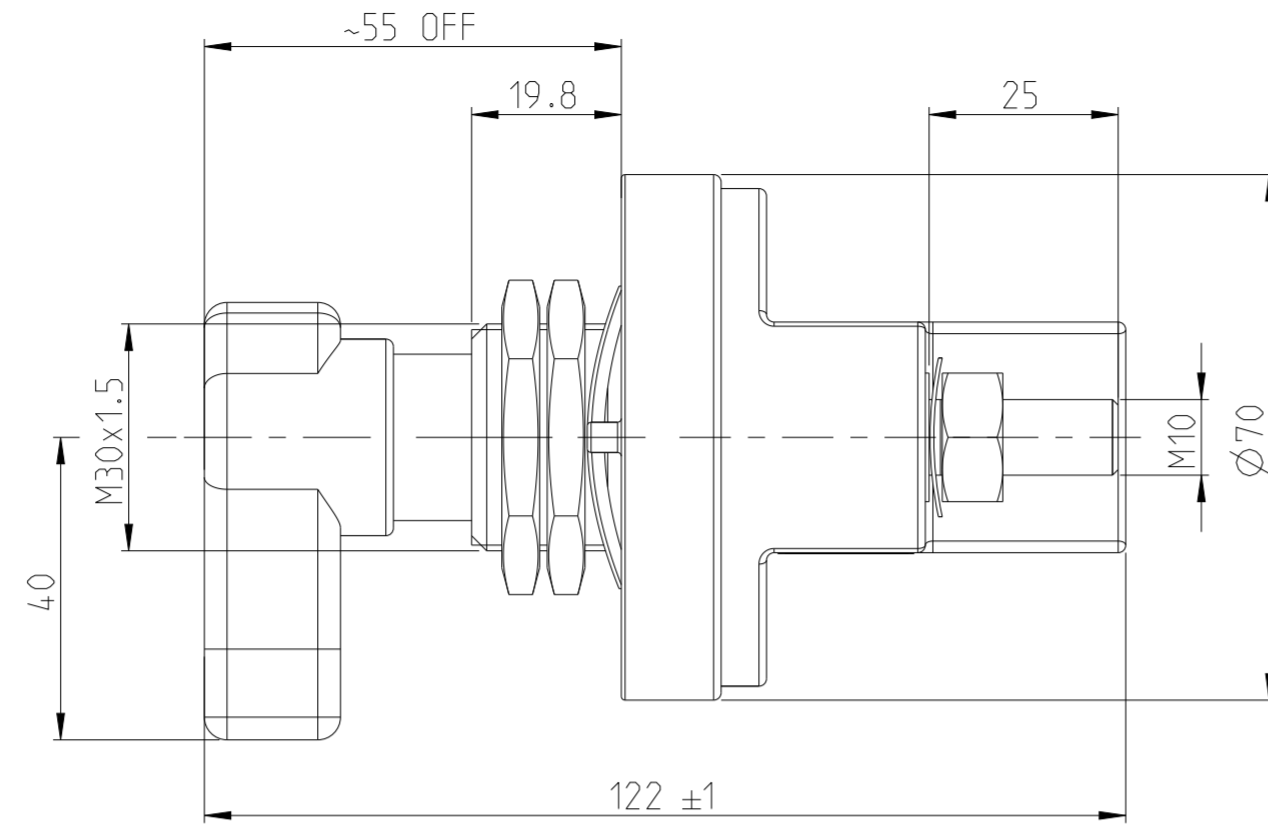
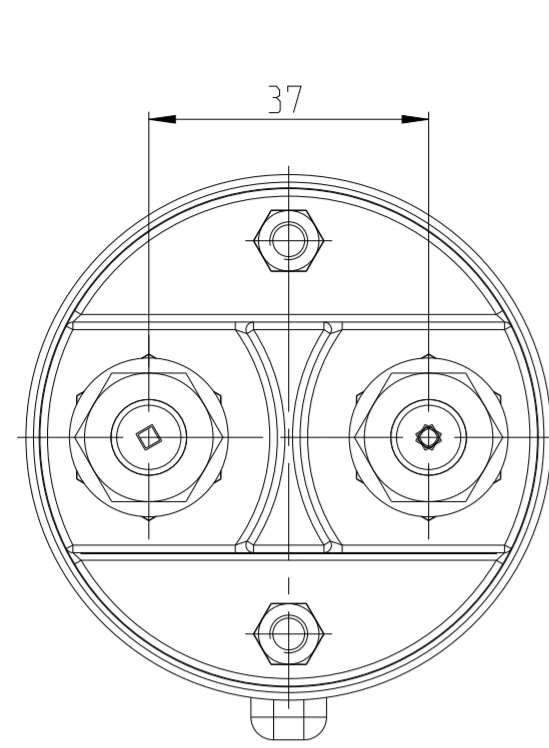
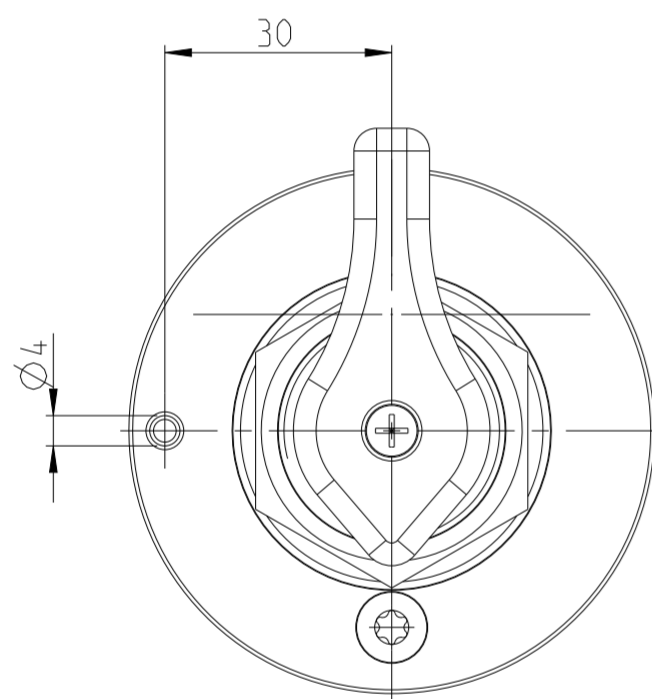


REVISIONS					
P	LTR	DESCRIPTION	DATE	DWN	APVD
	A	ECN-23-208938	TE STANDARD	19APR2023	LG AM



NOTES
Bemerkungen

- 1 TE-CONNECTIVITY ORDER-NUMBER
TE-Connectivity Bestellnummer
- 2 DO NOT SWITCH UNDER LOAD!
Nicht unter Last schalten!

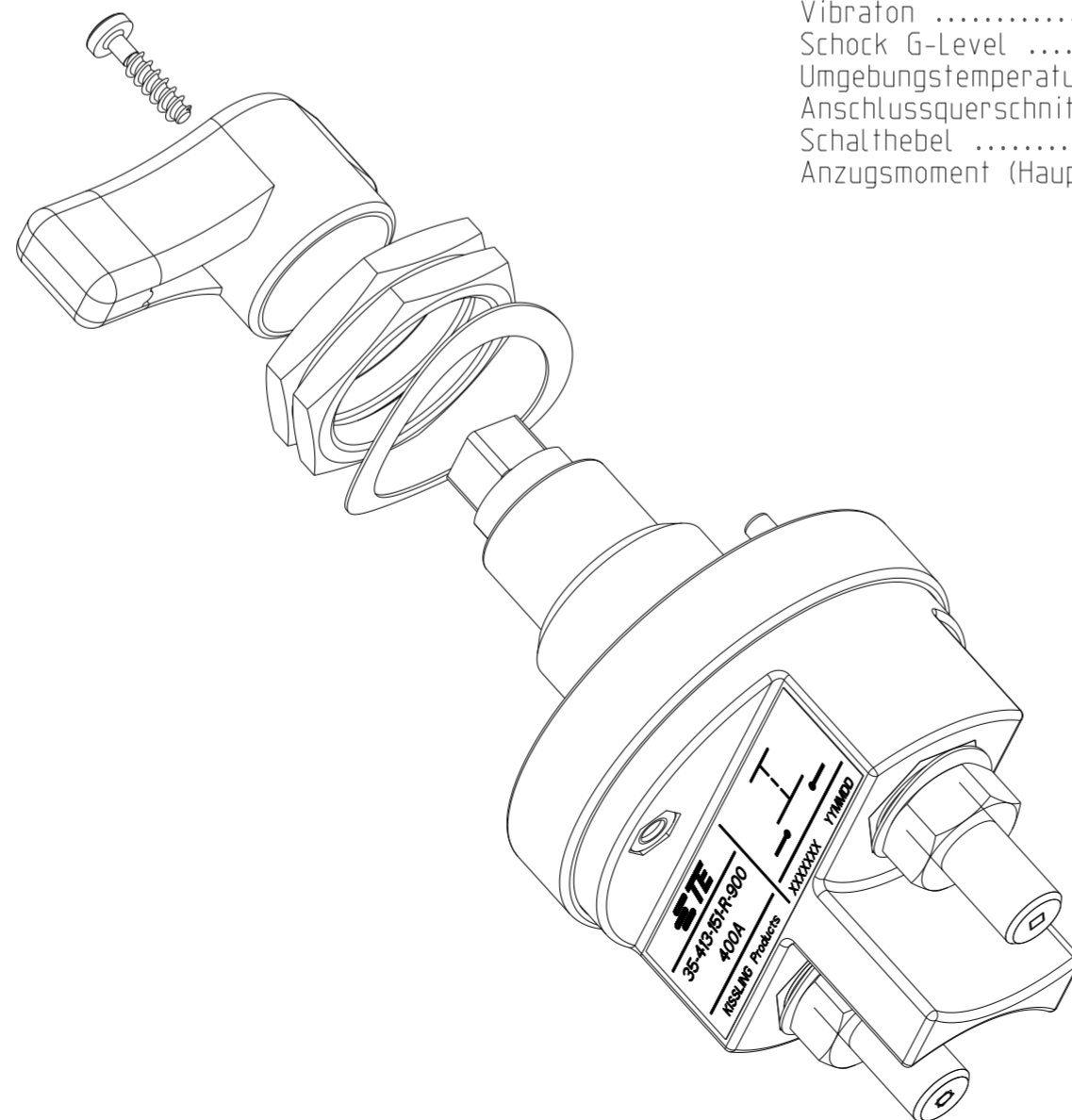


Technische Daten

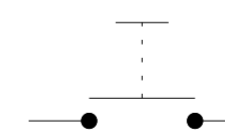
Werkstoff: Haube	PA GF schwarz
Befestigungssockel	PA GF schwarz
Schalthebel	PA GF rot
Min. Isolationswiderstand	100 MOHM
Hochspannungsfestigkeit	1050V - 1 min.
Max. Kontaktspannungsabfall bei Nennlast..	150 mV
Betriebsspannung	bis 32 VDC
Dauerstrom	400 A
Ueberlast	1200A - 4 min.
.....	1600A - 1,5 min.
.....	2000A - 10 sec.
Schutzart	IP 67 / IEC 529
Vibrator	4G / 50-2000 Hz
Schock G-Level	6G / 11 ms
Umgebungstemperatur	-40 °C bis +85 °C
Anschlussquerschnitt bei Nennlast	Min. 240 mm ²
Schalthebel	nicht abziehbar
Anzugsmoment (Hauptkontakte)	15 - 20 Nm

TECHNICAL DATA

CASE MATERIAL: COVER	PA GF BLACK
BASE PLATE	PA GF BLACK
SWITCH LEVER	PA GF RED
MIN INSULATION RESISTANCE	100 MOHM
DIELECTRIC WITHSTANDING VOLTAGE	1050V - 1 min.
MAX. CONTACT DROP DURING RESISTIVE LOAD..	150 mV
VOLTAGE	UP TO 32 VDC
DUTY RATING	400 A
OVERLOAD	1200 A - 4 min.
.....	1600 A - 1,5 min.
.....	2000 A - 10 sec.
SEALING	IP 67 / IEC 529
VIBRATION	4 G / 50-2000 Hz
SHOCK G-LEVEL	6G / 11 ms
TEMPERATURE RANGE	-40 °C TO +85 °C
WIRE SECTION (AT NOMINAL LOAD)	MIN. 240 MM ²
SWITCH LEVER	NOT REMOVEABLE
TORQUE (MAIN CONTACTS)	15 - 20 Nm



CIRCUIT
Schaltbild



K1137081	1	A	BATTERY DISCONNECTOR 400A Batterietrennschalter 400A	422	1
TE ORDER-NO.	REV.		DESCRIPTION	WEIGHT (g)	ITEM NO.

THIS DRAWING IS A CONTROLLED DOCUMENT.		DWN	25 JUN 2009
		CHK	25 JUN 2009
		APVD	29 JUN 2011
DIMENSIONS: mm		TOLERANCES UNLESS OTHERWISE SPECIFIED: DIN ISO 2768 cL	
MATERIAL		FINISH	

TE Connectivity		NAME	
		BATTERY DISCONNECTOR 400A Batterietrennschalter 400A	
SIZE	CAGE CODE	DRAWING NO.	RESTRICTED TO
A2	00779	C-35-413-151-R-900	-
CUSTOMER DRAWING		SCALE	SHEET
		1:1	1 OF 1
		REV	A