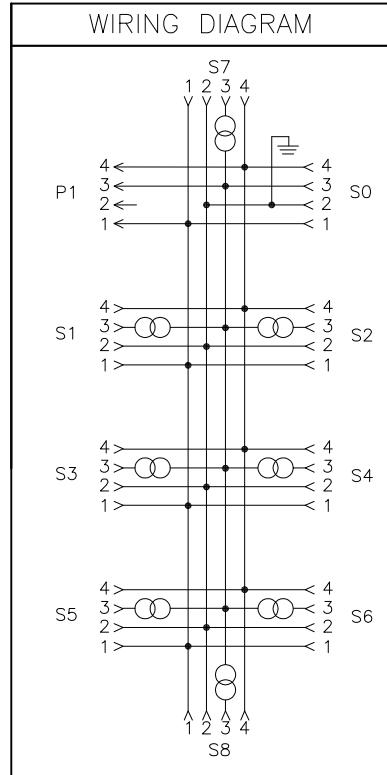
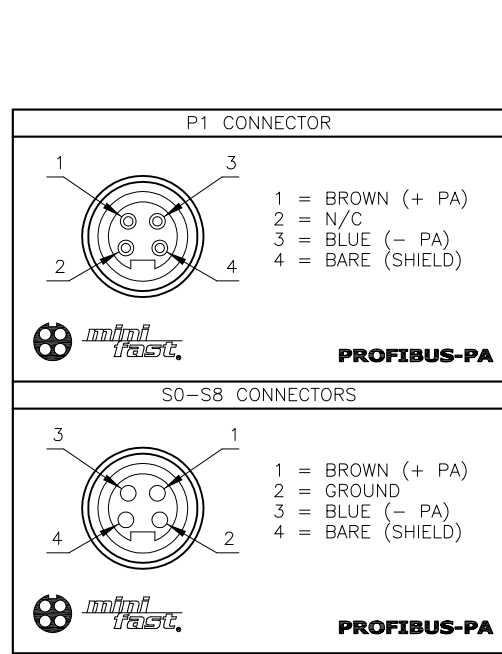


| SPECIFICATIONS                  |   |
|---------------------------------|---|
| HOUSING MATERIAL                | DIE-CAST ALUMINUM ALLOY   |
| HOUSING FINISH/COLOR            | POWDER COAT/BLACK   |
| RECEPTACLE HOUSING MAT'L/FINISH | STAINLESS STEEL/PASSIVATED  |
| CONTACT CARRIERS MATERIAL       | TPU   |
| CONTACTS MATERIAL/PLATING       | BRASS/GOLD  |
| OPERATING VOLTAGE               | 9-32 VDC  |
| SHORT CIRCUIT PROTECTION        | 0.55 VDC @ 55mA, 0.20 VDC @ 20mA                                      |
| OPEN CIRCUIT VOLTAGE            | 33 VDC  |
| CURRENT CONSUMPTION             | 5mA   |
| PROTECTION CLASS to DIN 40050   | IP 67 - ONLY WHEN ALL RECEPTACLES ARE COVERED WITH PLUGS OR CONNECTED |
| OPERATING TEMPERATURE           | -40°C to +70°C (-40°F to +158°F)                                      |



SOURCE DRAWING - FOR REFERENCE ONLY

|   |  |  |   |               |
|---|--|--|---|---------------|
| RELATED DOCUMENTS<br>1.<br>2.<br>3.<br>4. | 3RD ANGLE PROJECTION                   | THIS DRAWING IS CONFIDENTIAL AND THE PROPERTY OF TURCK INC. USE OF THIS DOCUMENT WITHOUT WRITTEN PERMISSION IS PROHIBITED. | 3000 CAMPUS DRIVE<br>MINNEAPOLIS, MN 55441<br>1-800-544-7769<br>(763) 553-7300<br>(763) 553-0708 fax<br>turck.com |               |
|   |  |  | <b>TURCK IAC</b><br>High Technology Sensors and Automation Controls   | DATE 01/16/03 |
| MATERIAL                                  | DRFT DF                                | DATE 01/16/03  | IDENTIFICATION NO.<br>U8737-83  |               |
| FINISH                                    | APVD DF                                | SCALE 1=2.0  | UNIT OF MEASUREMENT<br><b>MILLIMETER [ INCH ]</b>   | REV<br>L      |
|   | CONTACT TURCK FOR MORE INFORMATION     | DO NOT SCALE THIS DRAWING  | FILE: U8737-83  | SHEET 1 OF 1  |
| L   | DRAWING PROCESSED AS PART OF ECO 38770 | KMY  | 05/07/12  | 38770         |
| REV                                       | DESCRIPTION                            | BY   | DATE  | ECO NO.       |