



**VOIDLESS HERMETICALLY SEALED
500mV GLASS ZENER DIODES**
Qualified per MIL-PRF-19500/533

*Qualified Levels:
JAN, JANTX, JANTXV
and JANS*

DESCRIPTION

This Zener voltage regulator series is military qualified and is ideal for high-reliability applications where a failure cannot be tolerated. These industry-recognized 0.5 watt Zener voltage regulators are hermetically sealed with voidless-glass construction using an internal metallurgical bond. It includes Zener selections from 2.4 to 200 volts in standard 5% tolerances as well as tighter 1% and 2% tolerances. They are also available in axial leaded packages. Microsemi also offers numerous other Zener products to meet higher and lower power ratings in both thru-hole and surface mount packages.

Important: For the latest information, visit our website <http://www.microsemi.com>.

FEATURES

- Surface mount equivalent of JEDEC registered 1N6309 thru 1N6355 series.
- Voltage tolerances of 1%, 2% and 5% are available. (See [part nomenclature](#).)
- Voidless hermetically sealed glass package.
- Internal “Category I” metallurgical bonds for 1N6321US thru 1N6355US and “Category III” for 1N6309US thru 1N6320US.
- JAN, JANTX, JANTXV, and JANS reliability levels are available per MIL-PRF-19500/533.
- RoHS compliant versions available (commercial grade only).

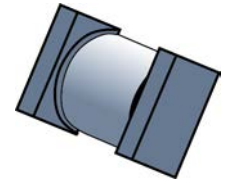
APPLICATIONS / BENEFITS

- Small surface mount Melf (“D” Package).
- Regulates voltage over a broad operating current and temperature range.
- Extensive selection from 2.4 to 200 volts.
- Standard and tight voltage tolerances available.
- Extremely robust construction.
- Non-sensitive to ESD per MIL-STD-750 method 1020.
- Inherently radiation hard as described in Microsemi “[MicroNote 050](#)”.

MAXIMUM RATINGS


Parameters/Test Conditions	Symbol	Value	Unit
Junction and Storage Temperature	T _J and T _{STG}	-65 to +175	°C
Thermal Resistance Junction-to-End Cap ⁽¹⁾	R _{θJEC}	35	°C/W
1N6309US – 1N6320US			
1N6321US – 1N6355US			
Thermal Resistance Junction-to-Ambient ⁽²⁾	R _{θJA}	240	°C/W
Steady-State Power Dissipation @ T _{EC} = 150 °C	P _D	0.5	W
Forward Voltage @ 1.0 A	V _F	1.4	V
Solder Temperature @ 10 s	T _{SP}	260	°C

- Notes:**
1. See [Figure 1](#) and [Figure 2](#) for derating.
 2. T_A = +55 °C before derating on printed circuit board (PCB), PCB = FR4 .0625 inch (1.59 mm) 1-layer 1-Oz Cu, horizontal, still air, pads = .067 inch (1.70 mm) x .105 inch (2.67 mm); strip = .030 inch (0.76 mm) x 1 inch (25.4 mm) long, R_{θJA} with a defined thermal resistance condition included is measured at I_Z = as defined in the characteristics and ratings table herein.



B-SQ Melf Package

Also available in:

DO-35 package
(axial-leaded)
 [1N6309 – 1N6355D](#)

MSC – Lawrence
6 Lake Street,
Lawrence, MA 01841
Tel: 1-800-446-1158 or
(978) 620-2600
Fax: (978) 689-0803

MSC – Ireland
Gort Road Business Park,
Ennis, Co. Clare, Ireland
Tel: +353 (0) 65 6840044
Fax: +353 (0) 65 6822298

Website:
www.microsemi.com

MECHANICAL and PACKAGING

- CASE: Hermetically sealed voidless hard glass with tungsten slugs.
- TERMINALS: End caps are copper with tin/lead (Sn/Pb) or RoHS compliant matte/tin (commercial grade only) finish.
- POLARITY: Cathode indicated by band.
- TAPE & REEL option: Standard per EIA-481-B. Consult factory for quantities.
- WEIGHT: 0.0945 grams.
- See [Package Dimensions](#) on last page.

PART NOMENCLATURE

JAN 1N6309 C US (e3)

Reliability Level

JAN = JAN Level
 JANTX = JANTX Level
 JANTXV = JANTXV Level
 JANS = JANS Level
 Blank = Commercial

JEDEC type number

(see [Electrical Characteristics](#) table)

RoHS Compliance

e3 = RoHS Compliant ([available on commercial grade only](#))
 Blank = non-RoHS Compliant

MELF Package
Zener Voltage Tolerance

C = +/- 2%
 D = +/- 1%
 Blank = +/- 5%

SYMBOLS & DEFINITIONS

Symbol	Definition
I_R	Reverse Current: The maximum reverse (leakage) current that will flow at the specified voltage and temperature.
I_Z, I_{ZT}, I_{ZK}	Regulator Current: The dc regulator current (I_Z), at a specified test point (I_{ZT}), near breakdown knee (I_{ZK}).
I_{ZM}	Maximum Regulator (Zener) Current: The maximum rated dc current for the specified power rating.
I_{ZSM}	Maximum Zener Surge Current: The non-repetitive peak value of Zener surge current at a specified wave form.
V_F	Maximum Forward Voltage: The maximum forward voltage the device will exhibit at a specified current.
V_{WM}	Working Peak Voltage: The maximum peak voltage that can be applied over the operating temperature range. This is also referred to as Standoff Voltage.
V_Z	Zener Voltage: The Zener voltage the device will exhibit at a specified current (I_Z) in its breakdown region.
Z_{ZT} or Z_{ZK}	Dynamic Impedance: The small signal impedance of the diode when biased to operate in its breakdown region at a specified rms current modulation (typically 10% of I_{ZT} or I_{ZK}) and superimposed on I_{ZT} or I_{ZK} respectively.

ELECTRICAL CHARACTERISTICS @ 25°C

TYPE Note 1	V _{Z2} NOM. +/-5% @ I _{Z2}	V _{Z1} MIN. @ I _{Z1} 250 µA	Test Current I _{Z2}	Dynamic Impedance Z _Z @ I _{Z2}	Dynamic Impedance Z _{ZK} @ 250 µA	Max. Current I _{ZM}	Voltage Reg. V _{Z(reg)} (ΔV _Z) Note 2	Surge Current 8.3 ms Square Wave I _{ZSM}	Reverse Voltage V _R	Max. Reverse Current I _{R1} @ V _R 25°C	Max. Reverse Current I _{R2} @ V _R 150°C	Max. Noise Density N _D @ 250 µA 1 to 3 kHz	Max. Temp. Coeff. of Zener Voltage α _{VZ}
	Volts	Volts	mA	ohms	ohms	mA	Volts	Amps	Volts	µA	µA	µV /√Hz	%/°C
1N6309US	2.4	1.1	20	30	1,200	177	1.50	2.50	1.0	100	200	1	-0.85
1N6310US	2.7	1.2	20	30	1,300	157	1.50	2.20	1.0	60	150	1	-0.80
1N6311US	3.0	1.3	20	29	1,400	141	1.50	2.00	1.0	30	100	1	-0.75
1N6312US	3.3	1.5	20	27	1,400	128	1.60	1.80	1.0	5	20	1	-0.70
1N6313US	3.6	1.8	20	25	1,400	117	1.60	1.65	1.0	3	12	1	-0.65
1N6314US	3.9	2.0	20	23	1,700	108	1.60	1.50	1.0	2	12	1	-0.60
1N6315US	4.3	2.4	20	20	1,700	99	0.90	1.40	1.0	2	12	1	-0.45 +0.20
1N6316US	4.7	2.8	20	17	1,500	90	0.50	1.27	1.5	5	12	1	-0.28 +0.32
1N6317US	5.1	3.3	20	14	1,300	83	0.40	1.17	2.0	5	12	1	-0.20 +0.35
1N6318US	5.6	4.3	20	8	1,200	76	0.40	1.10	2.5	5	10	2	+0.50
1N6319US	6.2	5.2	20	3	800	68	0.30	0.97	3.5	5	10	5	+0.60
1N6320US	6.8	6.0	20	3	400	63	0.35	1.23	4.0	2	50	5	+0.62
1N6321US	7.5	6.6	20	4	400	57	0.40	1.16	5.0	2	30	5	+0.68
1N6322US	8.2	7.5	20	5	400	52	0.40	1.07	6.0	1	10	20	+0.75
1N6323US	9.1	8.4	20	6	500	47	0.50	0.97	7.0	1	10	40	+0.76
1N6324US	10.0	9.1	20	6	500	43	0.50	0.89	8.0	1	10	80	+0.79
1N6325US	11.0	10.0	20	7	550	39	0.50	0.83	8.5	1	10	100	+0.82
1N6326US	12.0	11.0	20	7	550	35	0.55	0.77	9.0	1	10	100	+0.83
1N6327US	13.0	11.9	9.5	8	550	33	0.55	0.71	9.9	0.05	10	100	+0.83
1N6328US	15.0	13.8	8.5	10	600	28	0.70	0.62	11.0	0.05	10	100	+0.84
1N6329US	16.0	14.7	7.8	12	600	27	0.75	0.58	12.0	0.05	10	100	+0.84
1N6330US	18.0	16.6	7.0	14	600	24	0.85	0.52	14.0	0.05	10	100	+0.85
1N6331US	20.0	18.5	6.2	18	500	21	0.95	0.47	15.0	0.05	10	100	+0.86
1N6332US	22.0	20.4	5.6	20	500	19	1.05	0.43	17.0	0.05	10	100	+0.87
1N6333US	24.0	22.3	5.2	24	500	18	1.15	0.39	18.0	0.05	10	100	+0.88
1N6334US	27.0	25.2	4.6	27	500	16	1.30	0.35	21.0	0.05	10	100	+0.90
1N6335US	30.0	28.0	4.2	32	500	14	1.45	0.31	23.0	0.05	10	100	+0.91
1N6336US	33.0	30.9	3.8	40	600	13	1.60	0.28	25.0	0.05	10	100	+0.92
1N6337US	36.0	33.7	3.4	50	600	12	1.75	0.260	27.0	0.05	10	100	+0.93
1N6338US	39.0	36.6	3.2	55	700	11	1.90	0.240	30	0.05	10	100	+0.94
1N6339US	43.0	40.4	3.0	65	800	9.9	2.10	0.220	33	0.05	10	80	+0.95
1N6340US	47.0	44.2	2.7	75	900	9.0	2.25	0.200	36	0.05	10	80	+0.95
1N6341US	51.0	48.0	2.5	85	1,000	8.3	2.50	0.180	39	0.05	10	80	+0.96
1N6342US	56.0	52.7	2.2	100	1,200	7.6	2.70	0.170	43	0.05	10	80	+0.97
1N6343US	62.0	58.4	2.0	125	1,300	6.8	2.90	0.150	47	0.05	10	80	+0.99
1N6344US	68.0	64.1	1.8	155	1,500	6.3	3.20	0.130	52	0.05	10	80	+1.01
1N6345US	75.0	70.8	1.7	180	1,600	5.7	3.40	0.125	56	0.05	10	80	+1.03
1N6346US	82.0	77.4	1.5	220	1,800	5.2	3.80	0.115	62	0.05	10	80	+1.05
1N6347US	91.0	86.0	1.4	270	2,100	4.7	4.20	0.100	69	0.05	10	80	+1.08
1N6348US	100.0	94.5	1.3	340	2,400	4.3	4.40	0.095	76	0.05	10	80	+1.10
1N6349US	110.0	104.0	1.1	500	2,800	3.9	4.80	0.085	84	0.05	10	80	+1.10
1N6350US	120.0	113.0	1.0	600	3,200	3.5	5.20	0.080	91	0.05	10	80	+1.10
1N6351US	130.0	122	0.95	850	4,100	3.3	5.60	0.070	99	0.05	10	80	+1.10
1N6352US	150.0	141	0.85	1,000	4,500	2.8	7.00	0.065	114	0.05	10	80	+1.10
1N6353US	160.0	151	0.80	1,200	5,000	2.7	7.50	0.060	122	0.05	10	80	+1.10
1N6354US	180.0	170	0.68	1,500	5,600	2.4	9.00	0.050	137	0.05	10	80	+1.10
1N6355US	200.0	189	0.65	1,800	6,500	2.1	12.00	0.045	152	0.05	10	80	+1.10

NOTES:

- Standard voltage tolerance is 5 percent. Tighter tolerances are available in plus/minus 1 and 2 percent voltage tolerances. (See [part nomenclature](#).)
- Voltage regulation V_{Z(reg)} is the measured voltage change at thermal equilibrium between the current of 10% and 50% of Maximum Zener Current I_{ZM} when the lead temperature is maintained at 25 °C = +8 °C, -2 °C.

GRAPHS

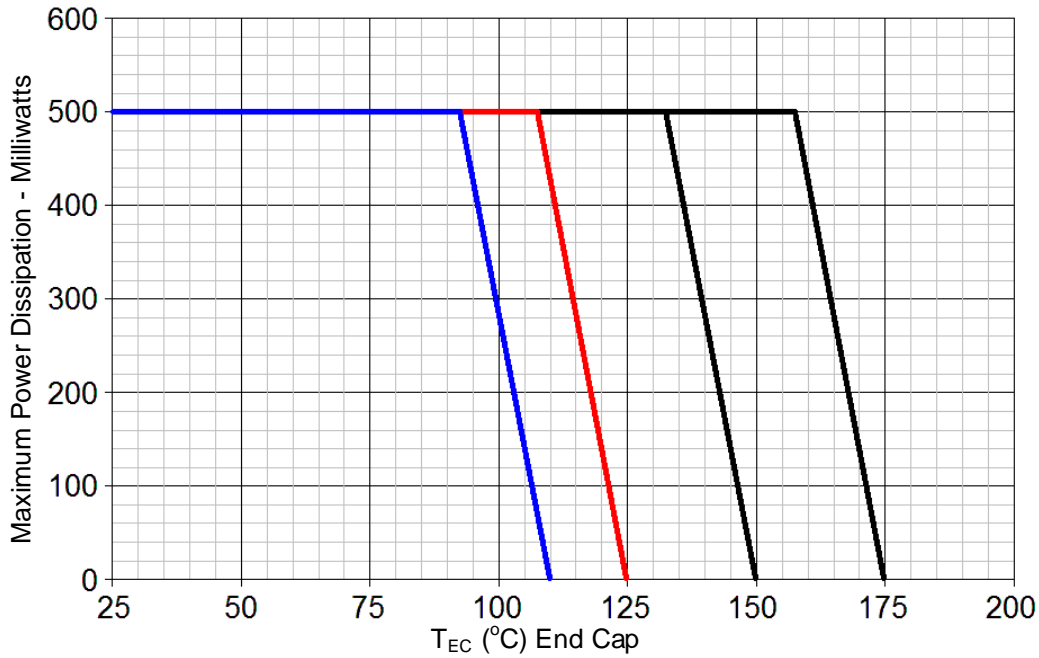


FIGURE 1 - (1N6309US – 1N6320US)
 T_{EC} Temperature-Power Derating Curve
 $R_{\theta,EC} = 35\text{ }^{\circ}\text{C/W}$ (dc operation)

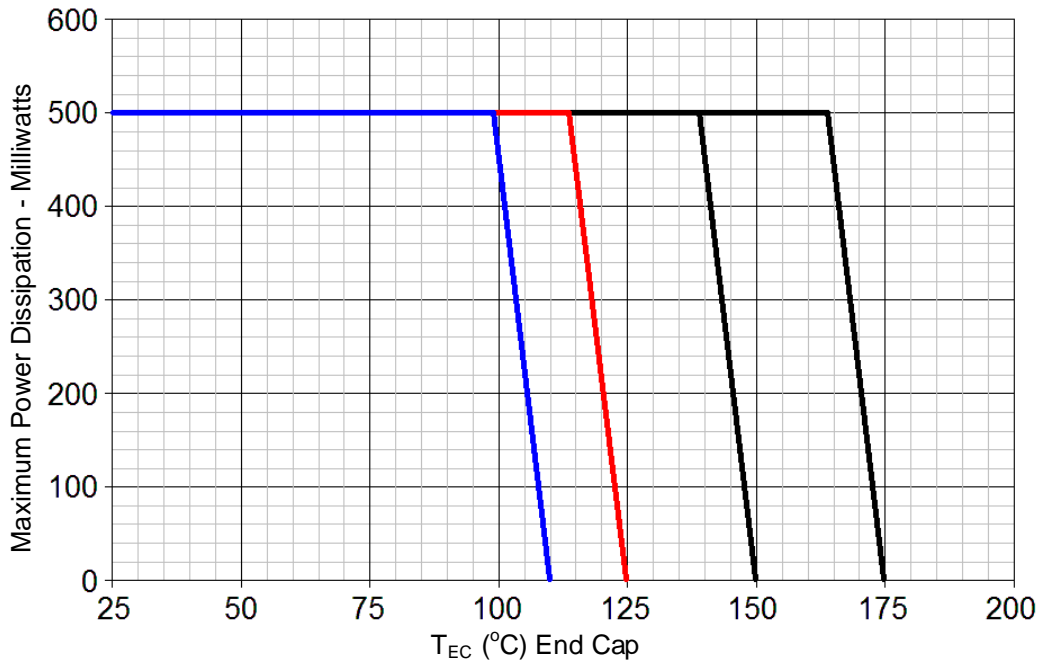


FIGURE 2 - (1N6321US – 1N6355US)
 T_{EC} Temperature-Power Derating Curve
 $R_{\theta,EC} = 21\text{ }^{\circ}\text{C/W}$ (dc operation)

GRAPHS (continued)

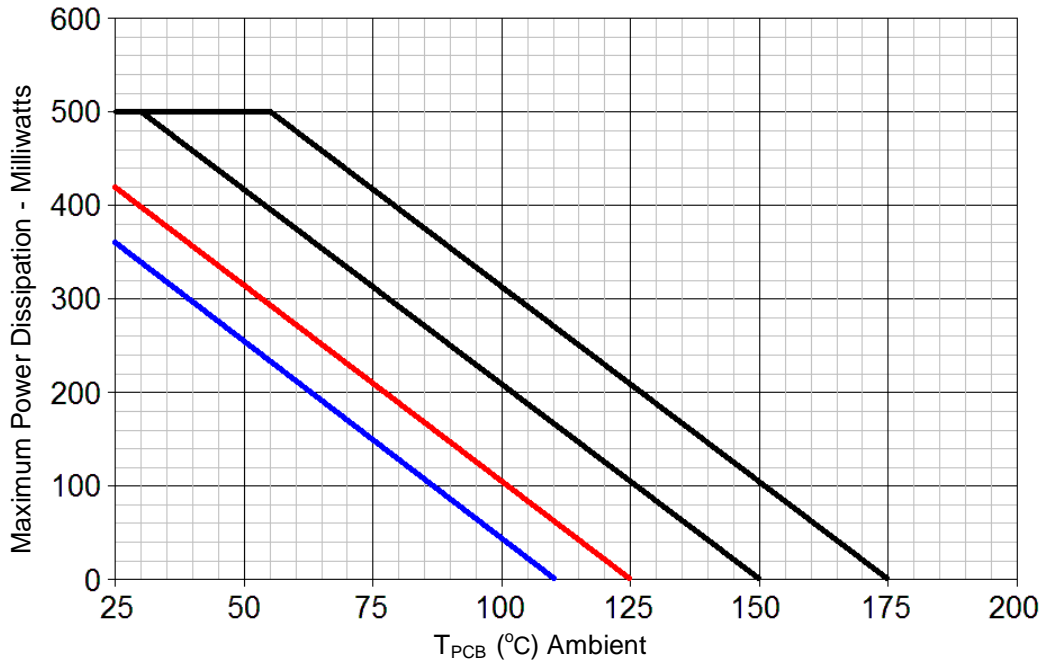
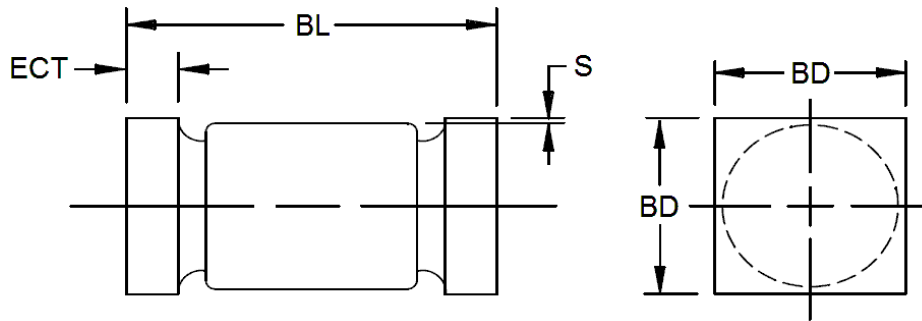


FIGURE 3
T_{PCB} Temperature-Power Derating Curve
R_{θJA} = 240 °C/W (dc operation)

PACKAGE DIMENSIONS

NOTE:

1. Dimensions are in inches.
2. Millimeters are given for general information only.
3. Dimensions are pre-solder dip.
4. In accordance with ASME Y14.5M, diameters are equivalent to Φ x symbology.

Symbol	DIMENSIONS			
	INCH		MILLIMETERS	
	Min	Max	Min	Max
BD	.070	.085	1.78	2.16
BL	.165	.195	4.19	4.95
ECT	.019	.028	0.48	0.71
S	.003 min		0.08 min	