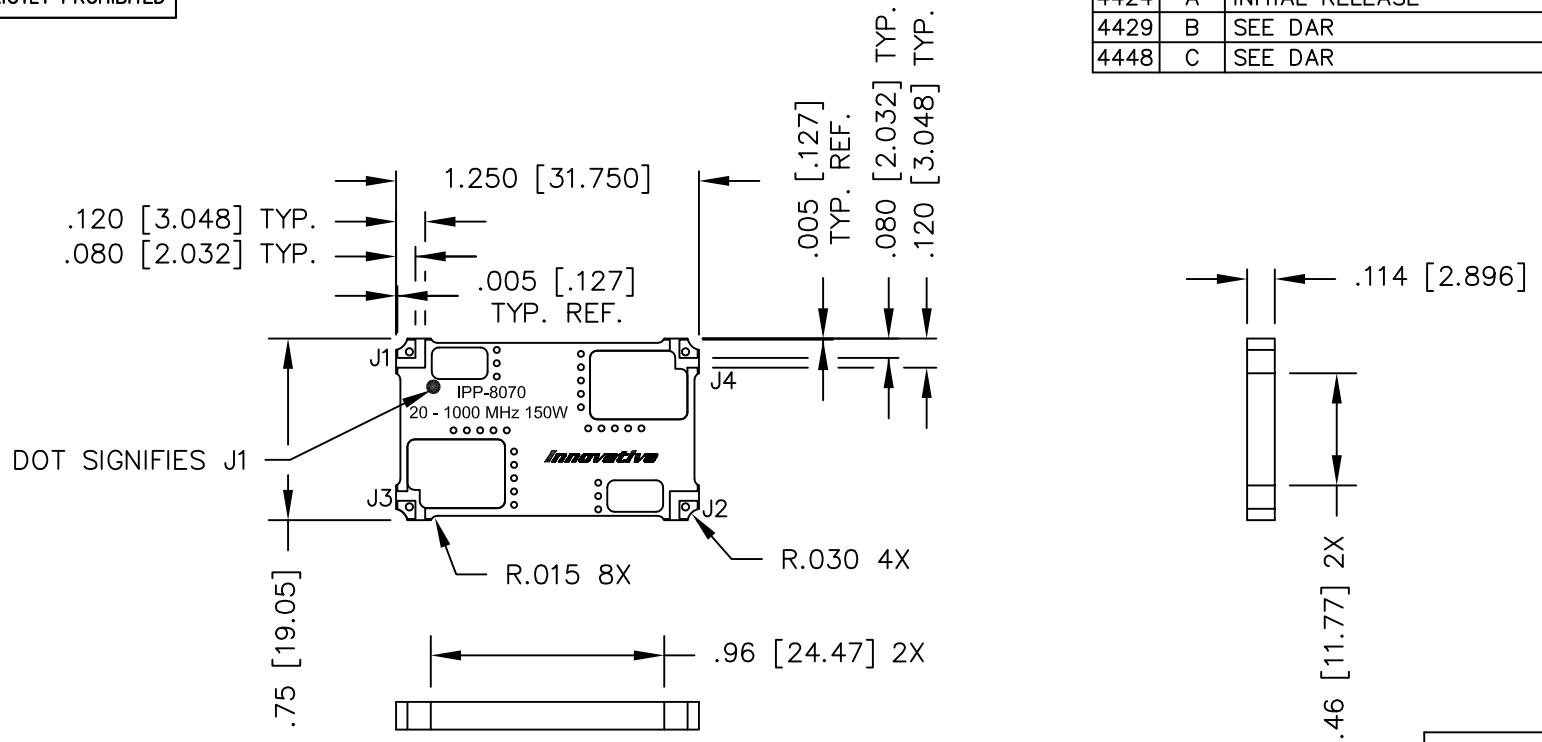


UNAUTHORIZED USE OF THIS
DRAWING IS STRICTLY PROHIBITED

DAR	REV	DESCRIPTION	APPVD	DATE
4424	A	INITIAL RELEASE	DG	7-13
4429	B	SEE DAR	DG	7-13
4448	C	SEE DAR	DG	.



- NOTES:**
- SEE SMD COUPLER APPLICATION NOTE FOR FURTHER INFORMATION.
 - AVAILABLE IN TAPE AND REEL. SEE SMD COUPLER APPLICATION NOTE FOR FURTHER INFORMATION.
 - DO NOT EXCEED 220°C WHEN INSTALLING COUPLER.

ELECTRICAL SPECIFICATIONS

FREQUENCY: 20 - 1000 MHz.
 INSERTION LOSS: <0.30 dB
 MAIN LINE VSWR: <1.30:1
 DIRECTIVITY: >18dB
 COUPLING: 50.0±1.5dB
 COUPLED FLATNESS: ±0.65dB
 POWER: 150 WATT
 TEMPERATURE: -55°C TO 85°C

FINISH	
P/N	TYPE
IPP-8070	TIN/LEAD

PORT CONFIGURATION			
INPUT	OUTPUT	FORWARD COUPLED	REFLECTED COUPLED
J1	J2	J3	J4
J2	J1	J4	J3

MATERIAL	DWN S.Cornell	DATE 10-11-12	Innovative Power Products	
FINISH	ENG DG	DATE 10-12		
SEE FINISH CHART	MANUF	DATE	TITLE OUTLINE	
TOLERANCE	CAGE CODE: 437R2		SMD COUPLER, DDC, 20 - 1000 MHz. 150W	
IN [MM]	SHEET 1	OF 1	SCALE 2:1	SIZE B
.XX ±.02 [.50] .XXX ±.010 [.254] ANG. ±1/2°			P/N	REV. C
			IPP-8070*	