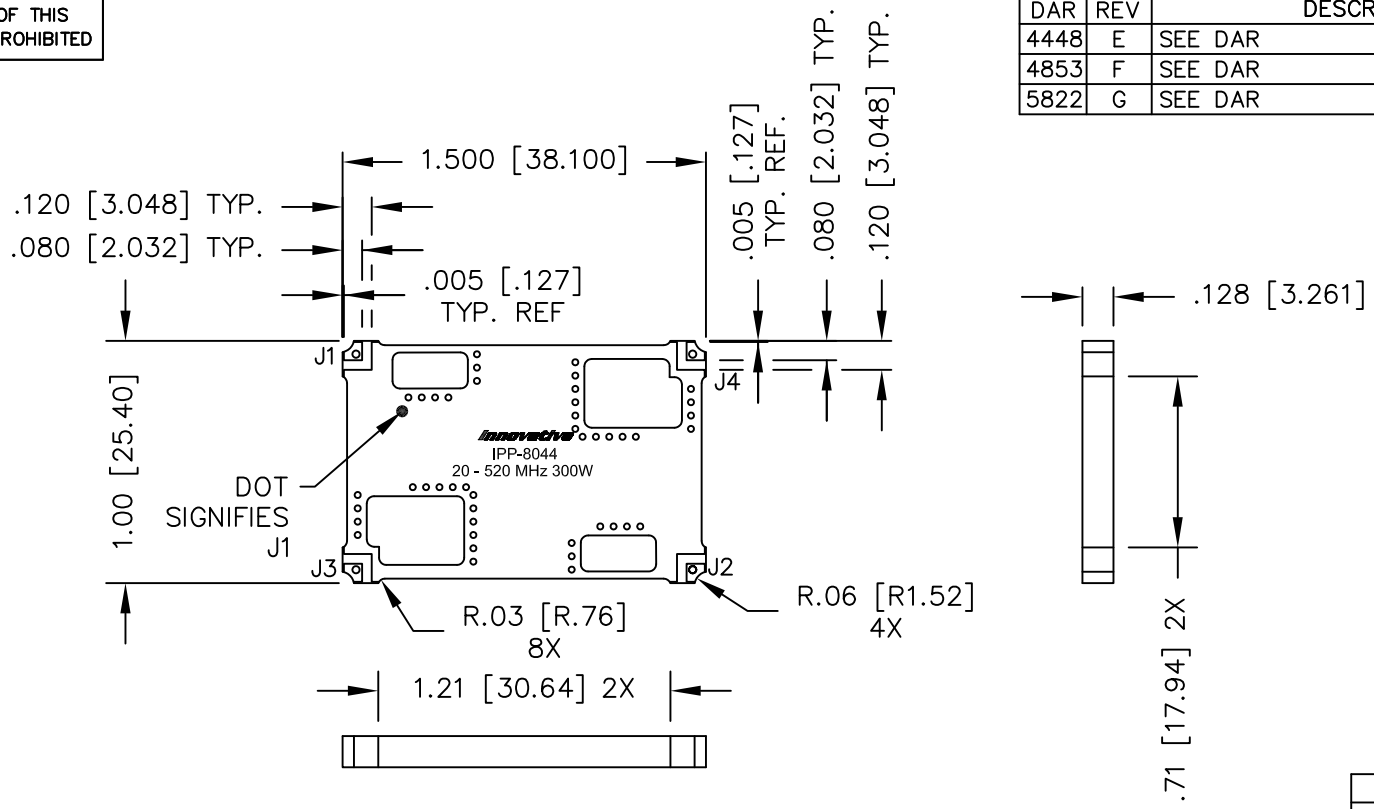


UNAUTHORIZED USE OF THIS  
DRAWING IS STRICTLY PROHIBITED

| DAR  | REV | DESCRIPTION | APPVD | DATE  |
|------|-----|-------------|-------|-------|
| 4448 | E   | SEE DAR     | DG    | 7-13  |
| 4853 | F   | SEE DAR     | DG    | 3-14  |
| 5822 | G   | SEE DAR     | DG    | 10-15 |



- NOTES:**
1. SEE SMD COUPLER APPLICATION NOTE FOR FURTHER INFORMATION.
  2. PARTS WITH RoHS TIN FINISH ARE RoHS COMPLIANT.
  3. AVAILABLE IN TAPE AND REEL. SEE SMD COUPLER APPLICATION NOTE FOR FURTHER INFORMATION.
  4. DO NOT EXCEED 220°C WHEN INSTALLING COUPLER.

**ELECTRICAL SPECIFICATIONS**

FREQUENCY: 20 - 520 MHz.  
 INSERTION LOSS: <0.25 dB  
 MAIN LINE VSWR: <1.25:1  
 DIRECTIVITY: >20dB  
 COUPLING: 50.0±1dB  
 COUPLED FLATNESS: ±0.6dB  
 POWER: 300 WATT  
 TEMPERATURE: -55°C TO 85°C

| FINISH     |                |
|------------|----------------|
| P/N        | TYPE           |
| IPP-8044   | TIN/LEAD       |
| IPP-8044RT | RoHS MATTE TIN |

| PORT CONFIGURATION |        |                 |                   |
|--------------------|--------|-----------------|-------------------|
| INPUT              | OUTPUT | FORWARD COUPLED | REFLECTED COUPLED |
| J1                 | J2     | J3              | J4                |
| J2                 | J1     | J4              | J3                |

|                            |                  |              |  |                  |           |
|----------------------------|------------------|--------------|--|------------------|-----------|
| MATERIAL                   | DWN DG           | DATE 11-10   |  |                  |           |
| FINISH<br>SEE FINISH CHART | ENG TJD          | DATE 11-10   |  |                  |           |
| TOLERANCE                  | CAGE CODE: 437R2 |              | TITLE<br>OUTLINE<br>SMD COUPLER, DDC, 20 - 520 MHz. 300W |                  |           |
| IN [MM]                    | SHEET OF<br>1 1  | SCALE<br>2:1 | SIZE<br>B  | P/N<br>IPP-8044* | REV.<br>G |