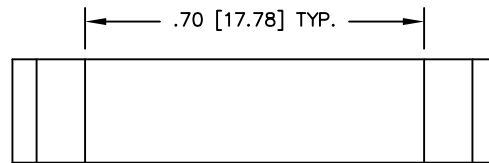
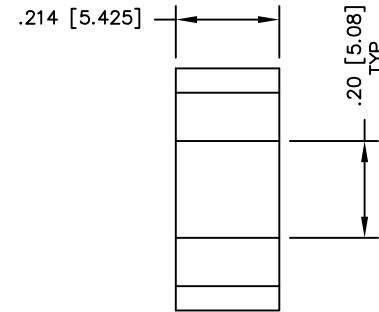
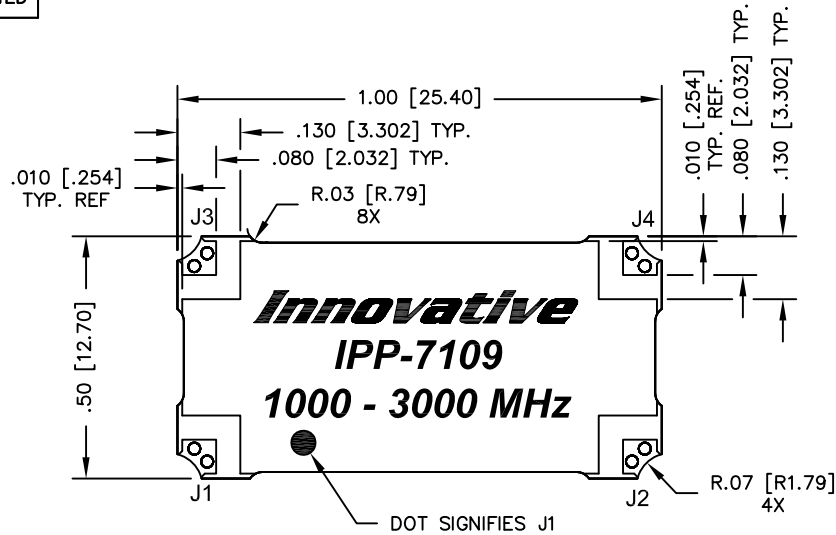


UNAUTHORIZED USE OF THIS  
DRAWING IS STRICTLY PROHIBITED

DAR	REV	DESCRIPTION	APPVD	DATE
4123	A	INITIAL RELEASE	DG	1-13



FINISH	
P/N	TYPE
IPP-7109	TIN/LEAD
IPP-7109RT	RoHS MATTE TIN
IPP-7109RC	RoHS NICKEL GOLD

**NOTES:**

1. SEE SMD COUPLER APPLICATION NOTE FOR FURTHER INFORMATION.
2. PARTS WITH RoHS MATTE TIN AND RoHS NICKEL GOLD FINISHES ARE RoHS COMPLIANT.
3. AVAILABLE IN TAPE AND REEL. SEE SMD COUPLER APPLICATION NOTE FOR FURTHER INFORMATION.

**ELECTRICAL SPECIFICATIONS**

FREQUENCY: 1000 - 3000 MHz.  
 INSERTION LOSS: < 0.25 dB  
 VSWR: < 1.30:1  
 ISOLATION: > 17 dB  
 AMPLITUDE BALANCE: ±1.1 dB  
 PHASE BALANCE: ±6°  
 POWER: 400 WATT  
 TEMPERATURE: -55°C TO 85°C

PORT CONFIGURATION				
INPUT	A	B	C	D
J1	--	ISOLATION	-3dB<0 DEG	-3dB<-90 DEG
J2	ISOLATION	--	-3dB<-90 DEG	-3dB<0 DEG
J3	-3dB<0 DEG	-3dB<-90 DEG	--	ISOLATION
J4	-3dB<-90 DEG	-3dB<0 DEG	ISOLATION	--

MATERIAL	DWN S.Cornell	DATE 10-17-12				
FINISH	ENG DG	DATE 10-12				
SEE FINISH CHART	MANUF	DATE	TITLE OUTLINE			
TOLERANCE	CAGE CODE: 437R2		SMD COUPLER, 90°, 1000 - 3000 MHz. 400W			
IN [MM]	SHEET 1	OF 1	SCALE 4:1	SIZE B	P/N IPP-7109*	REV. A