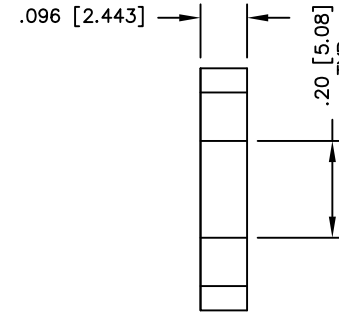
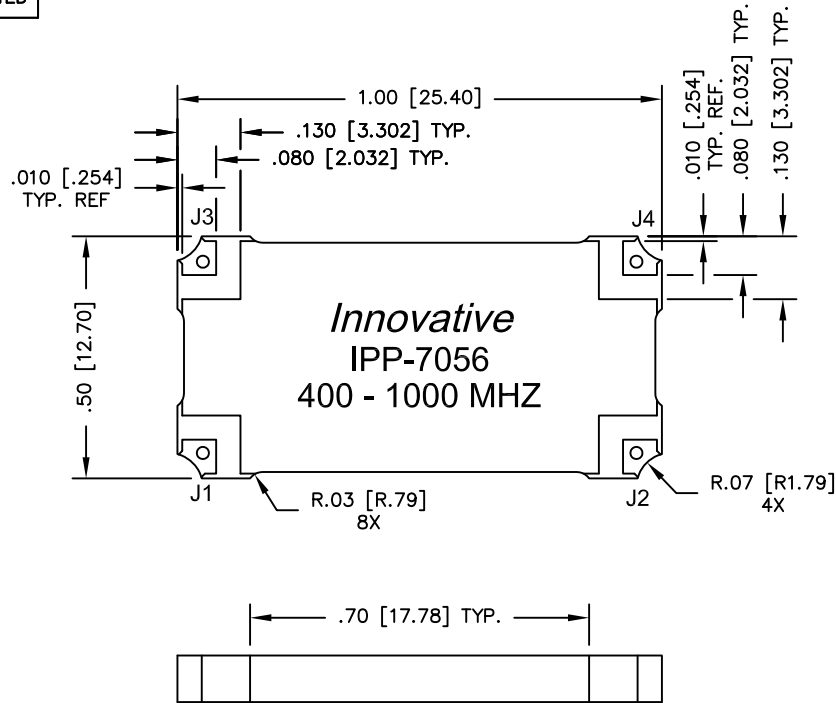


UNAUTHORIZED USE OF THIS
DRAWING IS STRICTLY PROHIBITED

DAR	REV	DESCRIPTION	APPVD	DATE
3016	A	INITIAL RELEASE	DG	3-11
3224	B	SEE DAR	DG	8-11



FINISH	
P/N	TYPE
IPP-7056	TIN/LEAD
IPP-7056RT	RoHS MATTE TIN
IPP-7056RC	RoHS NICKEL GOLD

NOTES:

- SEE SMD COUPLER APPLICATION NOTE FOR FURTHER INFORMATION.
- PARTS WITH RoHS MATTE TIN AND RoHS NICKEL GOLD FINISHES ARE RoHS COMPLIANT.
- AVAILABLE IN TAPE AND REEL. SEE SMD COUPLER APPLICATION NOTE FOR FURTHER INFORMATION.

ELECTRICAL SPECIFICATIONS

FREQUENCY: 400 - 1000 MHz.
 INSERTION LOSS: < 0.25 dB
 VSWR: < 1.25:1
 ISOLATION: > 18 dB
 AMPLITUDE BALANCE: ±0.65 dB
 PHASE BALANCE: ±5°
 POWER: 150 WATT
 TEMPERATURE: -55°C TO 85°C

PORT CONFIGURATION				
INPUT	A	B	C	D
J1	--	ISOLATION	-3dB<0 DEG	-3dB<-90 DEG
J2	ISOLATION	--	-3dB<-90 DEG	-3dB<0 DEG
J3	-3dB<0 DEG	-3dB<-90 DEG	--	ISOLATION
J4	-3dB<-90 DEG	-3dB<0 DEG	ISOLATION	--

MATERIAL	DWN S.Cornell	DATE 4-27-10			
	ENG DG	DATE 4-10			
FINISH SEE FINISH CHART	MANUF	DATE	TITLE OUTLINE		
	CAGE CODE: 437R2		SMD COUPLER, 90°, 400 - 1000 MHz 150W		
TOLERANCE	SHEET OF 1 1		SCALE 4:1	SIZE B	P/N IPP-7056*
IN [MM]	.XX ±.02 [.50] .XXX ±.010 [.254] ANG. ±1/2°				REV. B