

±200-V COMMON-MODE VOLTAGE DIFFERENCE AMPLIFIER

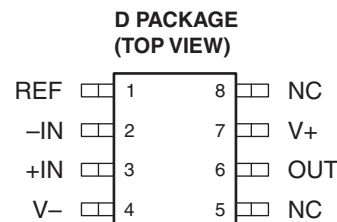
Check for Samples: [INA148-Q1](#)

FEATURES

- Qualified for Automotive Applications
- High Common-Mode Voltage
 - 75 V at $V_S = 5\text{ V}$
 - ±200 V at $V_S = \pm 15\text{ V}$
- Fixed Differential Gain = 1 V/V
- Low Quiescent Current: 260 μA
- Wide Supply Range
 - Single Supply: 2.7 V to 36 V
 - Dual Supplies: ±1.35 V to ±18 V
- Low Gain Error: 0.075% Max
- Low Nonlinearity: 0.002% Max
- High CMR: 86 dB
- Surface-Mount SO-8 (D) Package

APPLICATIONS

- Current-Shunt Measurements
- Differential Sensor Amplifiers
- Line Receivers
- Battery-Powered Systems
- Automotive Instrumentation
- Stacked-Cell Monitors



NC – No internal connection

DESCRIPTION

The INA148 is a precision low-power unity-gain difference amplifier with a high common-mode input voltage range. It consists of a monolithic precision bipolar operational amplifier with a thin-film resistor network.

The on-chip resistors are laser trimmed for an accurate 1-V/V differential gain and high common-mode rejection. Excellent temperature tracking of the resistor network maintains high gain accuracy and common-mode rejection over temperature. The INA148 operates on single or dual supplies.

The INA148 is available in a small SO-8 surface-mount package, and it is specified for operation over the temperature range of –40°C to 125°C.

ORDERING INFORMATION⁽¹⁾

T _A	PACKAGE ⁽²⁾		ORDERABLE PART NUMBER	TOP-SIDE MARKING
–40°C to 125°C	SOIC – D	Reel of 2500	INA148QDRQ1	148Q1

- (1) For the most current package and ordering information, see the Package Option Addendum at the end of this document, or see the TI web site at www.ti.com.
- (2) Package drawings, thermal data, and symbolization are available at www.ti.com/packaging.



Please be aware that an important notice concerning availability, standard warranty, and use in critical applications of Texas Instruments semiconductor products and disclaimers thereto appears at the end of this data sheet.



This integrated circuit can be damaged by ESD. Texas Instruments recommends that all integrated circuits be handled with appropriate precautions. Failure to observe proper handling and installation procedures can cause damage.

ESD damage can range from subtle performance degradation to complete device failure. Precision integrated circuits may be more susceptible to damage because very small parametric changes could cause the device not to meet its published specifications.

ABSOLUTE MAXIMUM RATINGS⁽¹⁾

over operating free-air temperature range (unless otherwise noted)

V_S	Supply voltage, V_+ to V_-		36 V
V_{IN}	Input voltage	Continuous	± 200 V
		Peak (0.1 second)	± 500 V
t_{SS}	Short circuit to ground duration		Continuous
θ_{JA}	Package thermal impedance, junction to free air		97.1°C/W
T_A	Operating free-air temperature range		–40°C to 125°C
T_J	Maximum operating virtual-junction temperature		150°C
T_{stg}	Storage temperature range		–65°C to 150°C
T_{lead}	Lead temperature range (soldering, 10 seconds)		300°C
ESD	Electrostatic discharge rating	Human-Body Model (HBM)	1500 V
		Machine Model (MM)	150 V
		Charged-Device Model (CDM)	2000 V

(1) Stresses beyond those listed under *absolute maximum ratings* may cause permanent damage to the device. These are stress ratings only, and functional operation of the device at these or any other conditions beyond those indicated under *recommended operating conditions* is not implied. Exposure to absolute-maximum-rated conditions for extended periods may affect device reliability.

RECOMMENDED OPERATING CONDITIONS

		MIN	MAX	UNIT	
V_S	Supply voltage	Single supply	2.7	36	V
		Dual supply	± 1.35	± 18	
T_A	Operating free-air temperature	–40	125	°C	

ELECTRICAL CHARACTERISTICS

 $V_S = \pm 5\text{ V to } \pm 15\text{ V}$ (dual supply), $R_L = 10\text{ k}\Omega$ to ground, $V_{REF} = 0\text{ V}$, $T_A = 25^\circ\text{C}$ (unless otherwise noted)

PARAMETER		TEST CONDITIONS		MIN	TYP	MAX	UNIT
V_{OS}	Input offset voltage ⁽¹⁾ (2)	$V_{CM} = 0\text{ V}$	$V_S = \pm 15\text{ V}$		± 1	± 5	mV
			$V_S = \pm 5\text{ V}$		± 1	± 5	
$\Delta V_{OS}/\Delta T$	Input offset voltage drift ⁽¹⁾	$T_A = -40^\circ\text{C to } 125^\circ\text{C}$			± 10		$\mu\text{V}/^\circ\text{C}$
PSRR	Power supply ripple rejection ⁽¹⁾	$V_S = \pm 1.35\text{ V to } \pm 18\text{ V}$, $V_{CM} = 0\text{ V}$			± 50	± 400	$\mu\text{V}/\text{V}$
V_{CM}	Common-mode voltage range	$V_{+IN} - V_{-IN} = 0$	$V_S = \pm 15\text{ V}$		-200	200	V
			$V_S = \pm 5\text{ V}$		-100	80	
CMRR	Common-mode rejection ratio	$V_S = \pm 15\text{ V}$, $V_{CM} = -200\text{ V to } 200\text{ V}$, $R_S = 0\ \Omega$		70	86		dB
		$V_S = \pm 5\text{ V}$, $V_{CM} = -100\text{ V to } 80\text{ V}$, $R_S = 0\ \Omega$		70	86		
	Differential input impedance				2		M Ω
	Common-mode input impedance				1		M Ω
V_n	Voltage noise ⁽¹⁾ (3)	$f = 0.1\text{ Hz to } 10\text{ Hz}$			17		μV_{p-p}
		$f = 1\text{ kHz}$			880		$\text{nV}/\sqrt{\text{Hz}}$
	Initial gain ⁽¹⁾				1		V/V
	Gain error	$V_O = (V_- + 0.5)\text{ to } (V_+ - 1.5)$			± 0.01	± 0.075	%
	Gain error over temperature				± 3	± 10	$\text{ppm}/^\circ\text{C}$
	Gain nonlinearity	$V_O = (V_- + 0.5)\text{ to } (V_+ - 1.5)$	$V_S = \pm 15\text{ V}$		± 0.00 1	± 0.002	%FSR
			$V_S = \pm 5\text{ V}$		± 0.00 1		%FSR
	Small signal bandwidth frequency response				100		kHz
SR	Slew rate				1		V/ μs
t_s	Settling time	$V_S = \pm 15\text{ V}$, 10-V step	0.1%		21		μs
			0.01%		25		
		$V_S = \pm 5\text{ V}$, 6-V step	0.1%		21		
			0.01%		25		
	Overload recovery	50% input overload			24		μs
V_O	Output voltage	$R_L = 100\text{ k}\Omega$		$V_- + 0.25$		$V_+ - 1$	V
		$R_L = 10\text{ k}\Omega$		$V_- + 0.5$		$V_+ - 1.5$	
I_O	Output current	Short-circuit current, continuous to common			± 13		mA
C_L	Load capacitance	Stable operation			10		nF
I_S	Supply current	$V_{IN} = 0$, $I_O = 0$			± 260	± 300	μA

(1) Overall difference amplifier configuration. Referred to input pins (V_{+IN} and V_{-IN}), gain = 1 V/V.

(2) Includes effects of amplifier's input bias and offset currents.

(3) Includes effects of input current noise and thermal noise contribution of resistor network.

ELECTRICAL CHARACTERISTICS

$V_S = 5\text{ V}$ (single supply), $R_L = 10\text{ k}\Omega$ to $V_S/2$, $V_{REF} = V_S/2$, $T_A = 25^\circ\text{C}$ (unless otherwise noted)

PARAMETER		TEST CONDITIONS	MIN	TYP	MAX	UNIT
V_{OS}	Input offset voltage ^{(1) (2)}	$V_{CM} = V_S/2$		± 1	± 5	mV
$\Delta V_{OS}/\Delta T$	Input offset voltage drift ⁽¹⁾	$T_A = -40^\circ\text{C}$ to 125°C		± 10		$\mu\text{V}/^\circ\text{C}$
PSRR	Power supply ripple rejection ⁽¹⁾	$V_S = 2.7\text{ V}$ to 36 V , $V_{CM} = V_S/2$		± 50	± 400	$\mu\text{V}/\text{V}$
V_{CM}	Common-mode voltage range	$V_{+IN} - V_{-IN} = 0$	$V_{REF} = 0.25\text{ V}$	-4	75	V
			$V_{REF} = V_S/2$	-47.5	32.5	
CMRR	Common-mode rejection ratio	$V_{CM} = -47.5\text{ V}$ to 32.5 V , $R_S = 0\ \Omega$	70	86		dB
	Differential input impedance			2		M Ω
	Common-mode input impedance			1		M Ω
V_n	Voltage noise ^{(1) (3)}	$f = 0.1\text{ Hz}$ to 10 Hz		17		μV_{p-p}
	Voltage noise density ^{(1) (3)}	$f = 1\text{ kHz}$		880		$\text{nV}/\sqrt{\text{Hz}}$
	Initial gain ⁽¹⁾			1		V/V
	Gain error	$V_O = 0.5\text{ V}$ to 3.5 V		± 0.01	± 0.075	%
	Gain error over temperature			± 3	± 10	$\text{ppm}/^\circ\text{C}$
	Gain nonlinearity	$V_O = 0.5\text{ V}$ to 3.5 V		± 0.00 1		%FSR
	Small signal bandwidth			100		kHz
SR	Slew rate			1		V/ μs
t_s	Settling time	$V_S = 5\text{ V}$, 3-V step	0.1%	21		μs
			0.01%	25		
	Overload recovery	50% input overload		13		μs
V_O	Output voltage	$R_L = 100\text{ k}\Omega$	$V_- + 0.25$		$V_+ - 1$	V
		$R_L = 10\text{ k}\Omega$	$V_- + 0.5$		$V_+ - 1.5$	
I_O	Output current	Short-circuit current, continuous to common		± 8		mA
C_L	Load capacitance	Stable operation		10		nF
I_Q	Quiescent current	$V_{IN} = 0$, $I_O = 0$		260	300	μA

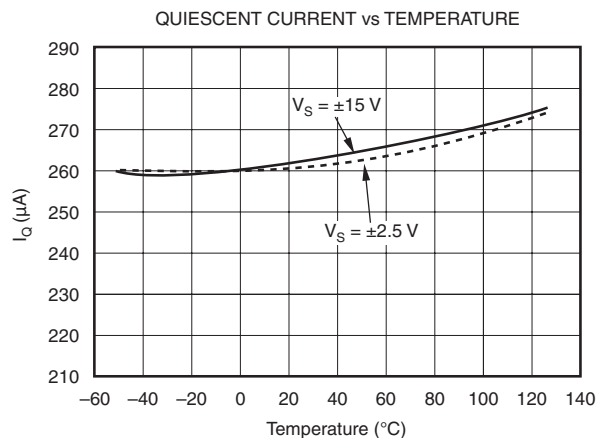
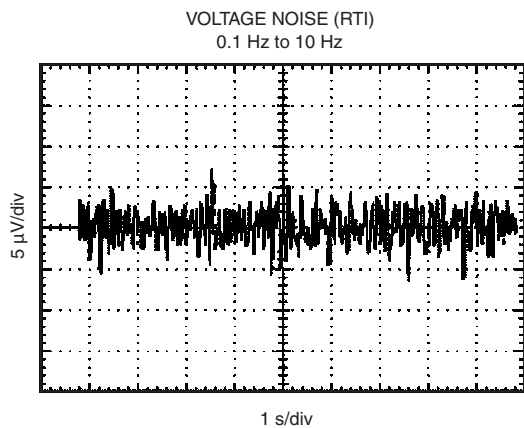
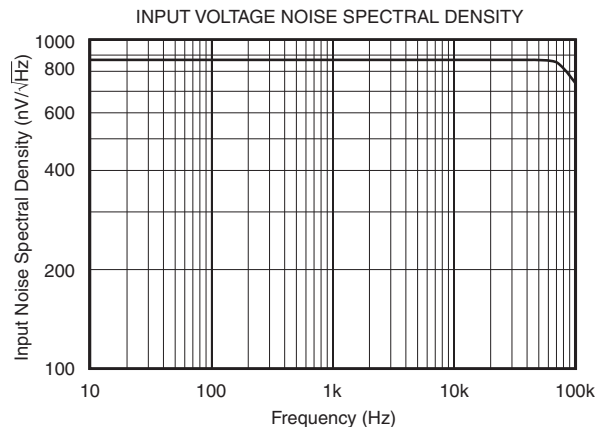
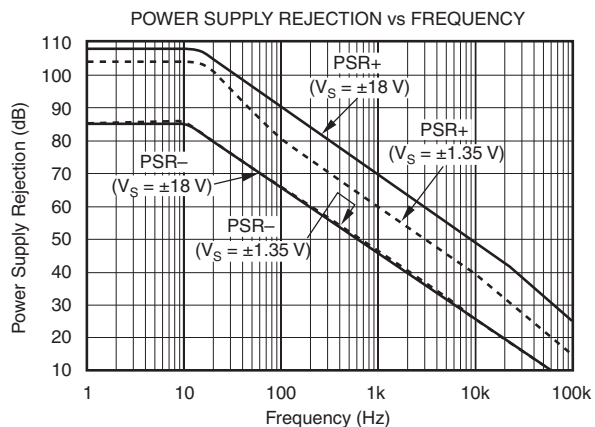
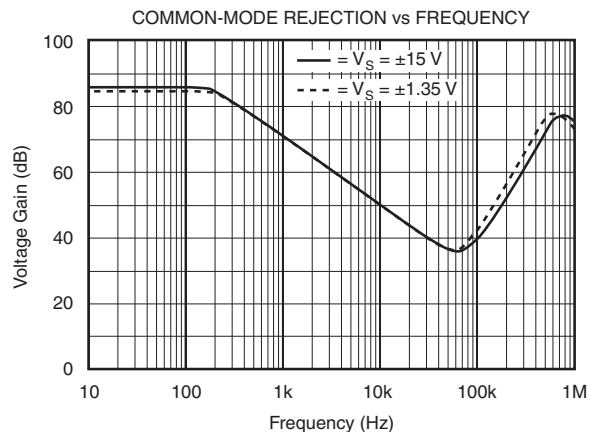
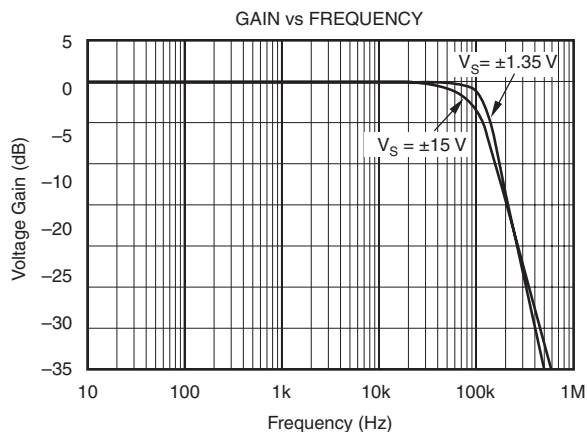
(1) Overall difference amplifier configuration. Referred to input pins (V_{+IN} and V_{-IN}), gain = 1 V/V.

(2) Includes effects of amplifier's input bias and offset currents.

(3) Includes effects of input current noise and thermal noise contribution of resistor network.

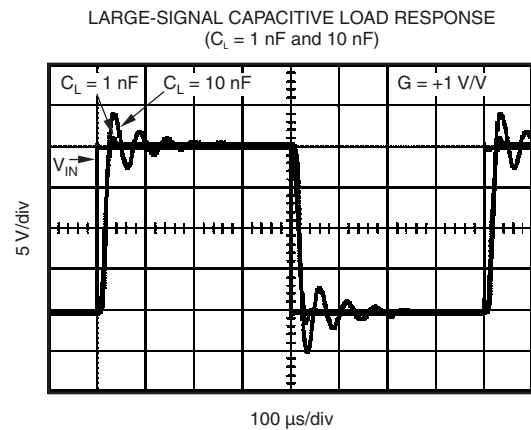
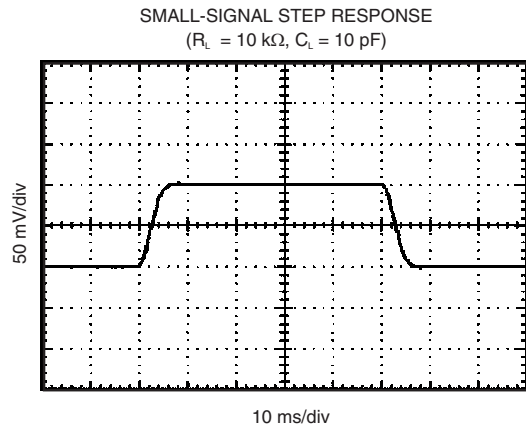
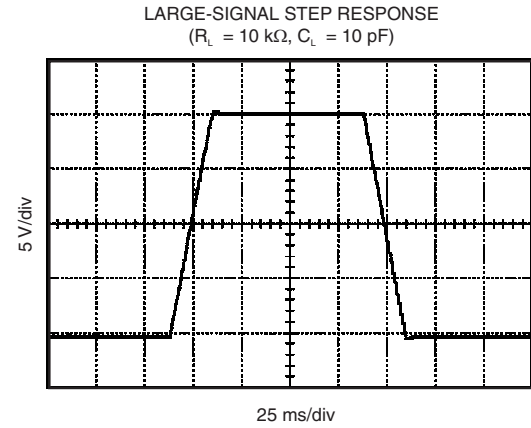
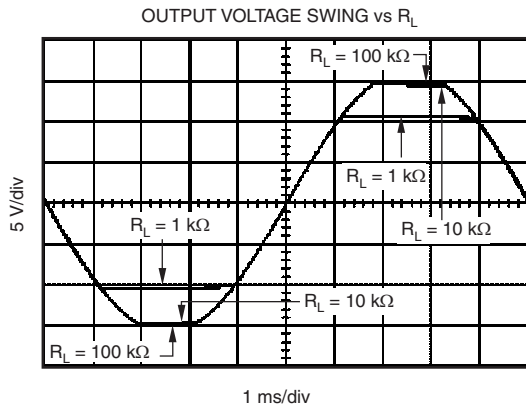
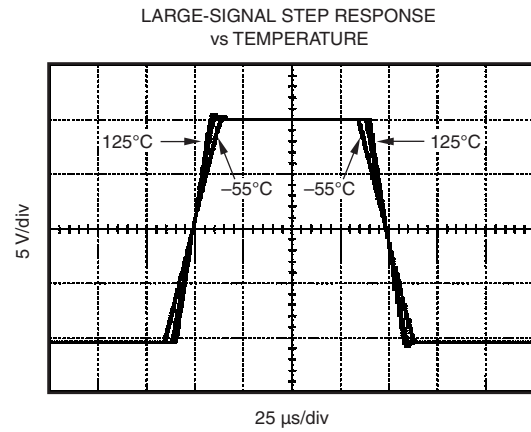
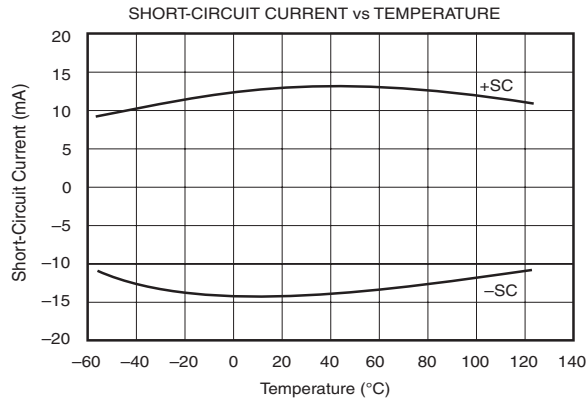
TYPICAL CHARACTERISTICS

$V_S = \pm 15\text{ V}$, $R_L = 10\text{ k}\Omega$ to common, $V_{REF} = 0\text{ V}$, $T_A = 25^\circ\text{C}$ (unless otherwise noted)



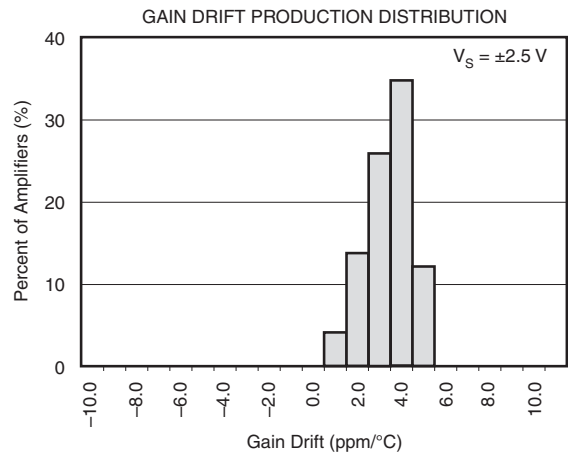
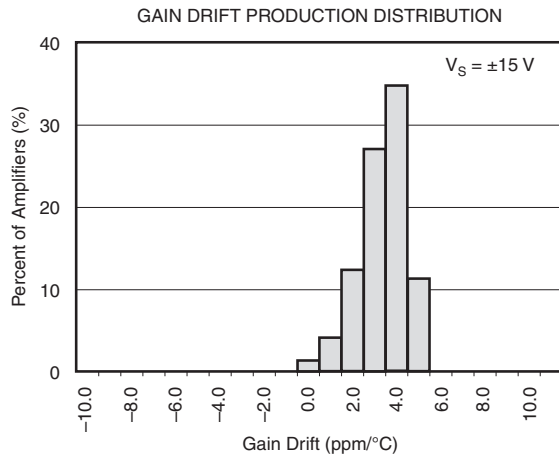
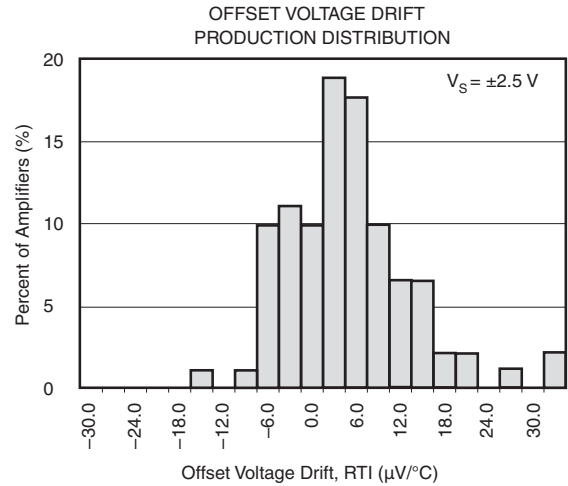
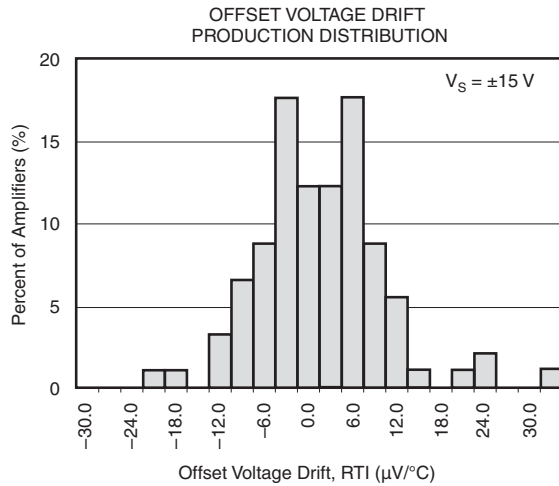
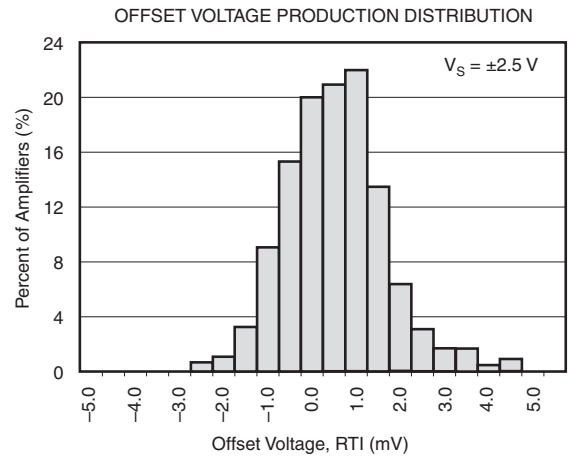
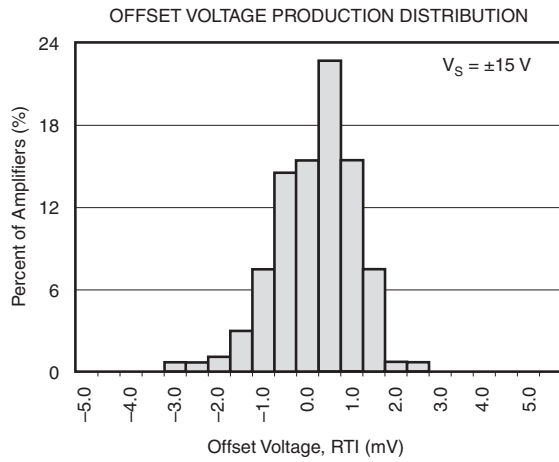
TYPICAL CHARACTERISTICS (continued)

$V_S = \pm 15\text{ V}$, $R_L = 10\text{ k}\Omega$ to common, $V_{REF} = 0\text{ V}$, $T_A = 25^\circ\text{C}$ (unless otherwise noted)



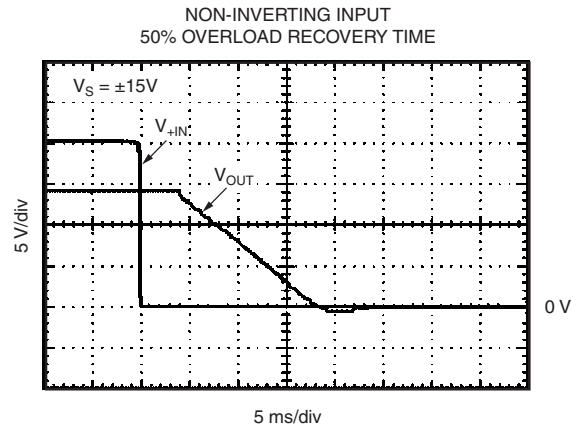
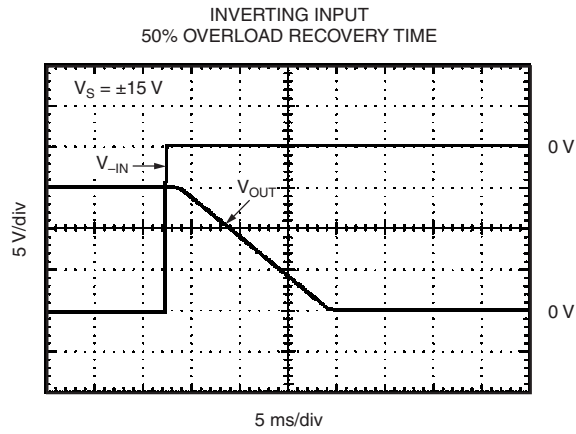
TYPICAL CHARACTERISTICS (continued)

$V_S = \pm 15\text{ V}$, $R_L = 10\text{ k}\Omega$ to common, $V_{REF} = 0\text{ V}$, $T_A = 25^\circ\text{C}$ (unless otherwise noted)



TYPICAL CHARACTERISTICS (continued)

$V_S = \pm 15\text{ V}$, $R_L = 10\text{ k}\Omega$ to common, $V_{REF} = 0\text{ V}$, $T_A = 25^\circ\text{C}$ (unless otherwise noted)



APPLICATION INFORMATION

The INA148 is a unity-gain difference amplifier with a high common-mode input voltage range. A basic diagram of the circuit and pin connections is shown in [Figure 1](#).

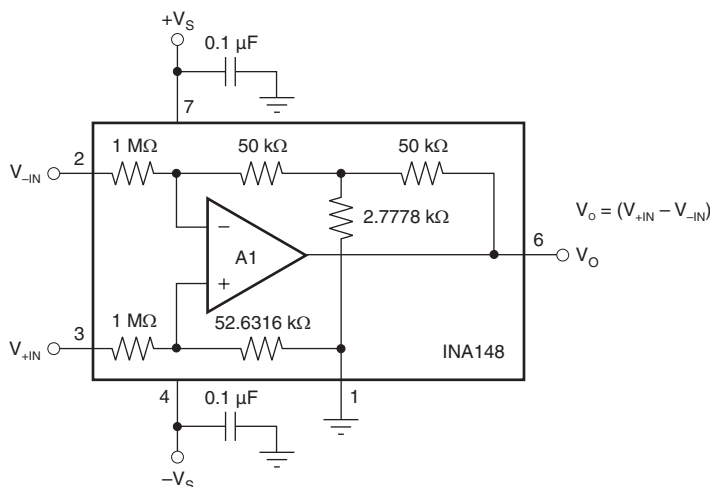


Figure 1. Basic Circuit Connections

To achieve its high common-mode voltage range, the INA148 features a precision laser-trimmed thin-film resistor network with a 20:1 input voltage divider ratio. High input voltages are thereby reduced in amplitude, allowing the internal operational amplifier (op amp) to "see" input voltages that are within its linear operating range. A "Tee" network in the op amp feedback network places the amplifier in a gain of 20 V/V, thus restoring the circuit's overall gain to unity (1 V/V).

External voltages can be summed into the amplifier's output by using the REF pin, making the differential amplifier a highly versatile design tool. Voltages on the REF pin also influence the INA148's common-mode voltage range.

In accordance with good engineering practice for linear integrated circuits, the INA148's power-supply bypass capacitors should be connected as close to pins 4 and 7 as practicable. Ceramic or tantalum types are recommended for use as bypass capacitors.

The input impedances are unusually high for a difference amplifier and this should be considered when routing input signal traces on a PC board. Avoid placing digital signal traces near the difference amplifier's input traces to minimize noise pickup.

Operating Voltage

The INA148 is specified for $\pm 15\text{-V}$ and $\pm 5\text{-V}$ dual supplies and 5-V single supplies. The INA148 can be operated with single or dual supplies with excellent performance.

The INA148 is fully characterized for supply voltages from $\pm 1.35\text{ V}$ to $\pm 18\text{ V}$ and over temperatures of -40°C to 125°C . Parameters that vary significantly with operating voltage, load conditions, or temperature are shown in the *Typical Characteristics* section.

Gain Equation

An internal on-chip resistor network sets the overall differential gain of the INA148 to precisely 1 V/V. Output is accordance with [Equation 1](#).

$$V_{\text{OUT}} = (V_{+\text{IN}} - V_{-\text{IN}}) + V_{\text{REF}} \quad (1) \quad (1)$$

Common-Mode Range

The 20:1 input resistor ratio of the INA148 provides an input common-mode range that extends well beyond its power supply rails.

The exact input voltage range depends on the amplifier's power-supply voltage and the voltage applied to the REF terminal (pin 1). Typical input voltage ranges at different power supply voltages can be found in the applications circuits section.

Offset Trim

The INA148 is laser-trimmed for low offset voltage and drift. Most applications require no external offset adjustment.

Because a voltage applied to the reference (REF) pin (pin 1) is summed directly into the amplifier's output signal, this technique can be used to null the amplifier's input offset voltage. [Figure 2](#) shows an optional circuit for trimming the offset voltage.

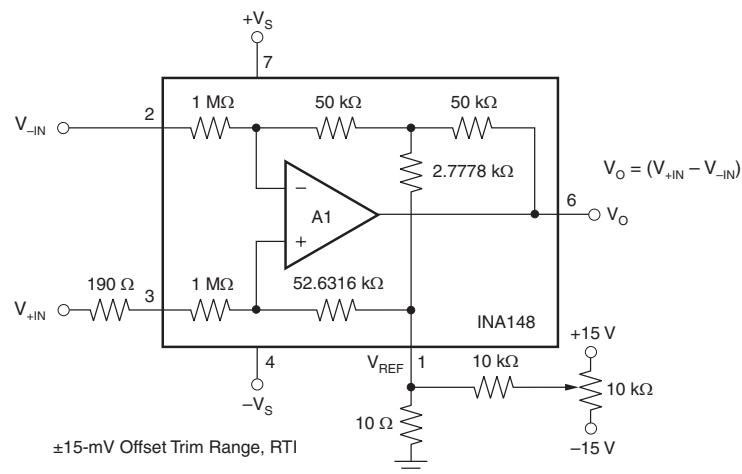


Figure 2. Optional Offset Trim Circuit

To maintain high common-mode rejection (CMR), the source impedance of any signal applied to the REF terminal should be very low ($\leq 5 \Omega$).

A source impedance of only 10Ω at the REF pin reduces the INA148's CMR to approximately 74 dB. High CMR can be restored if a resistor is added in series with the amplifier's positive input terminal (pin 3). This resistor should be 19 times the source impedance that drives the REF pin. For example, if the REF pin sees a source impedance of 10Ω , a resistor of 190Ω should be added in series with pin 3.

Preferably, the offset trim voltage applied to the REF pin should be buffered with an amplifier such as an OPA237 (see [Figure 3](#)). In this case, the op amp output impedance is low enough that no external resistor is needed to maintain the INA148's excellent CMR.

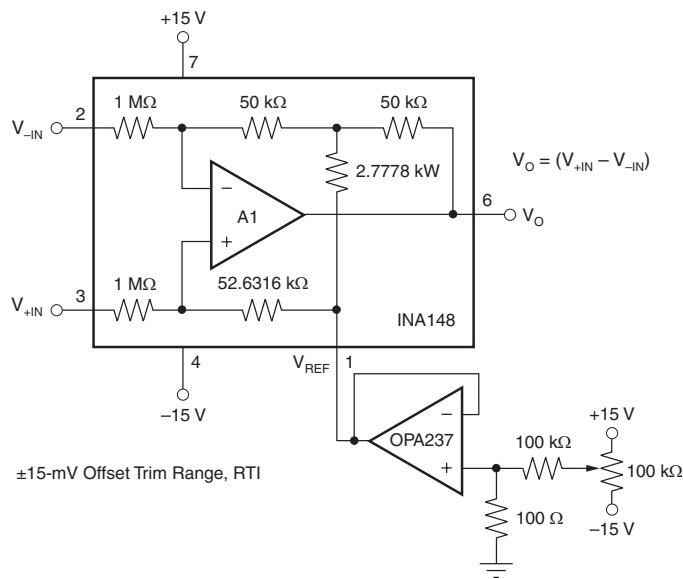


Figure 3. Preferred Offset Trim Circuit

Input Impedance

The input resistor network determines the impedance of each of the INA148 inputs. It is approximately 1 MΩ. Unlike an instrumentation amplifier, signal source impedances at the two input terminals must be nearly equal to maintain good common-mode rejection.

A mismatch between the two inputs' source impedances causes a differential amplifier's common-mode rejection to be degraded. With a source impedance imbalance of only 500 Ω, CMR can fall to approximately 66 dB.

Figure 4 shows a common application—measuring power supply current through a shunt resistor (R_S). A shunt resistor creates an unbalanced source resistance condition that can degrade a differential amplifier's common mode rejection.

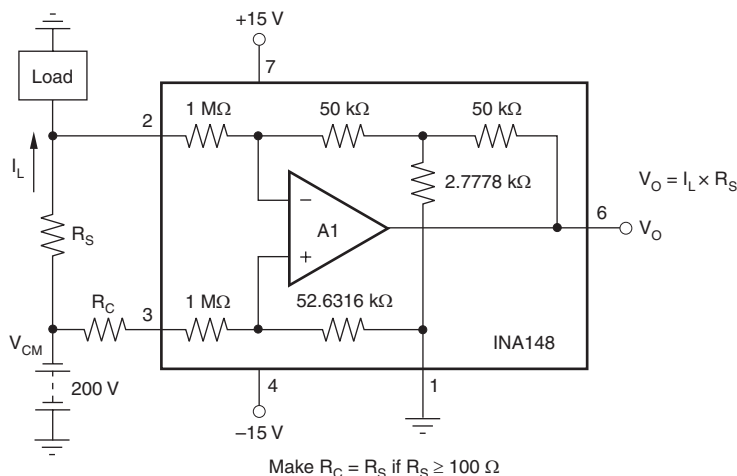


Figure 4. Shunt-Resistor Current Measurement Circuit

Unless the shunt resistor is less than approximately 100 Ω, an additional equal compensating resistor (R_C) is recommended to maintain input balance and high CMR.

Source impedances (or shunts) greater than 5 kΩ are not recommended, even if they are "perfectly" compensated. This is because the internal resistor network is laser-trimmed for accurate voltage divider ratios, but not necessarily to absolute values. Input resistors are shown as 1 MΩ, however, this is only their nominal value.

In practice, the input resistors' absolute values may vary by as much as 30%. The two input resistors match to about 5%, so adding compensating resistors greater than 5 kΩ can cause a serious mismatch in the resulting resistor network voltage divider ratios, thus degrading CMR.

Attempts to extend the INA148 input voltage range by adding external resistors is not recommended for the reasons described in the previous paragraph. CMR suffers serious degradation unless the resistors are carefully trimmed for CMR and gain. This is an iterative adjustment and can be tedious and time consuming.

Typical Application Circuits

Figure 5 through Figure 9 show typical application circuits for the INA148.

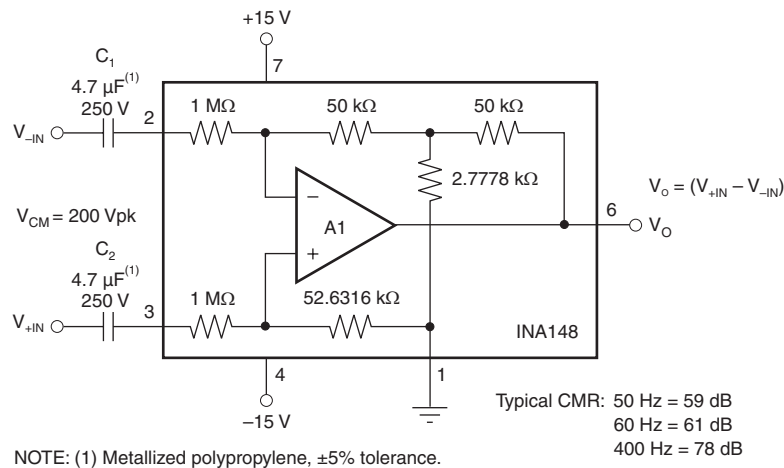


Figure 5. AC-Coupled Difference Amplifier

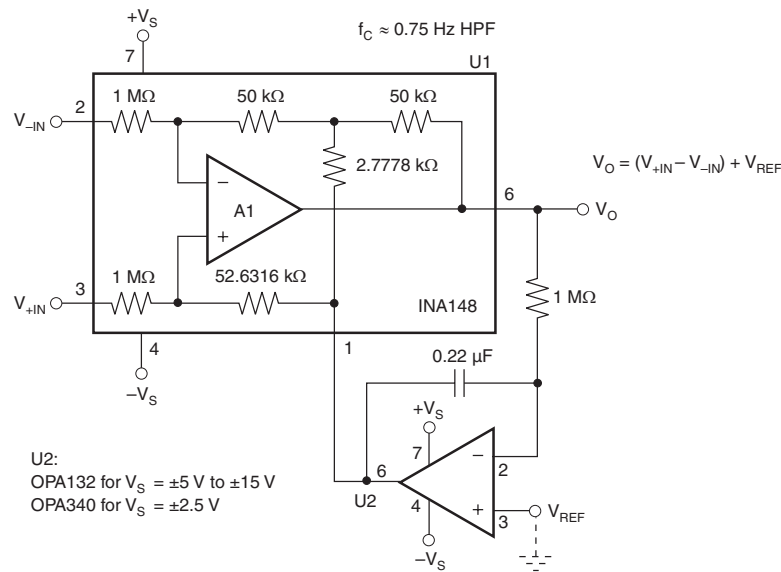


Figure 6. Quasi-AC-Coupled Differential Amplifier

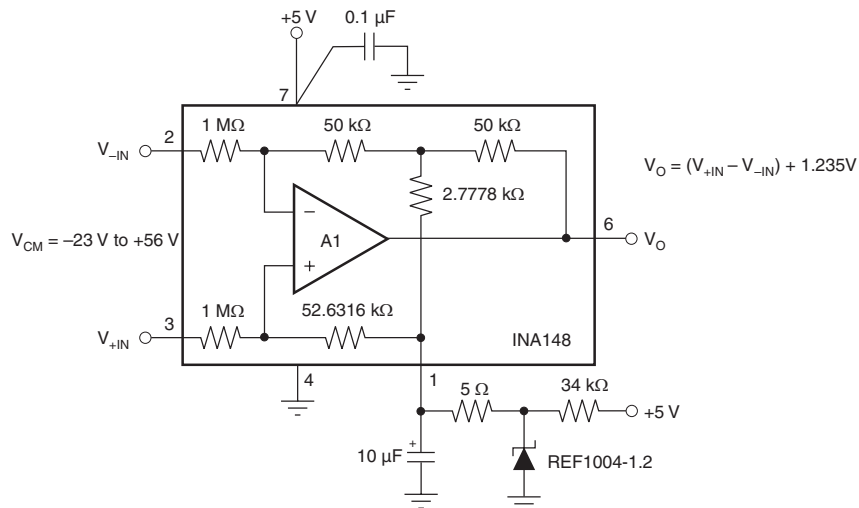


Figure 7. Single-Supply Differential Amplifier

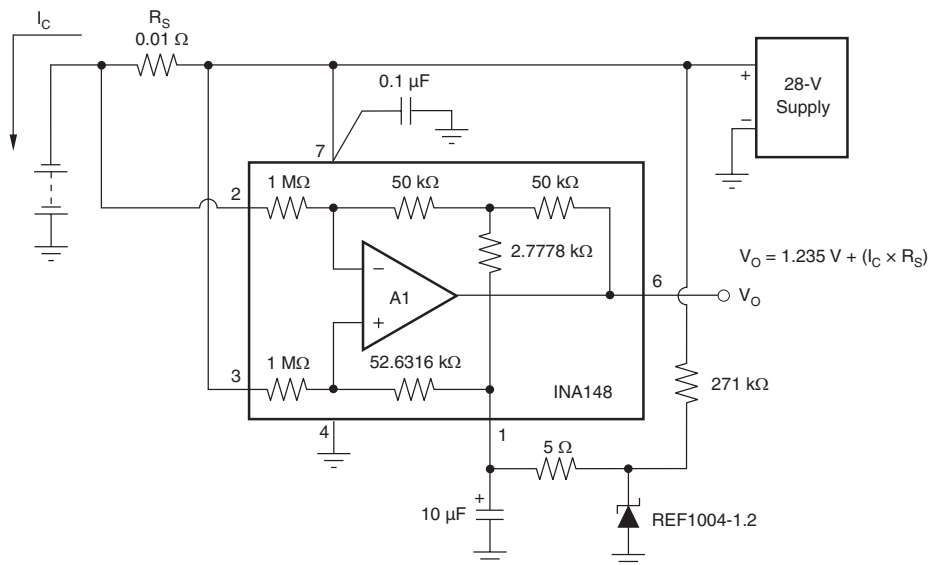


Figure 8. Battery Monitor Circuit

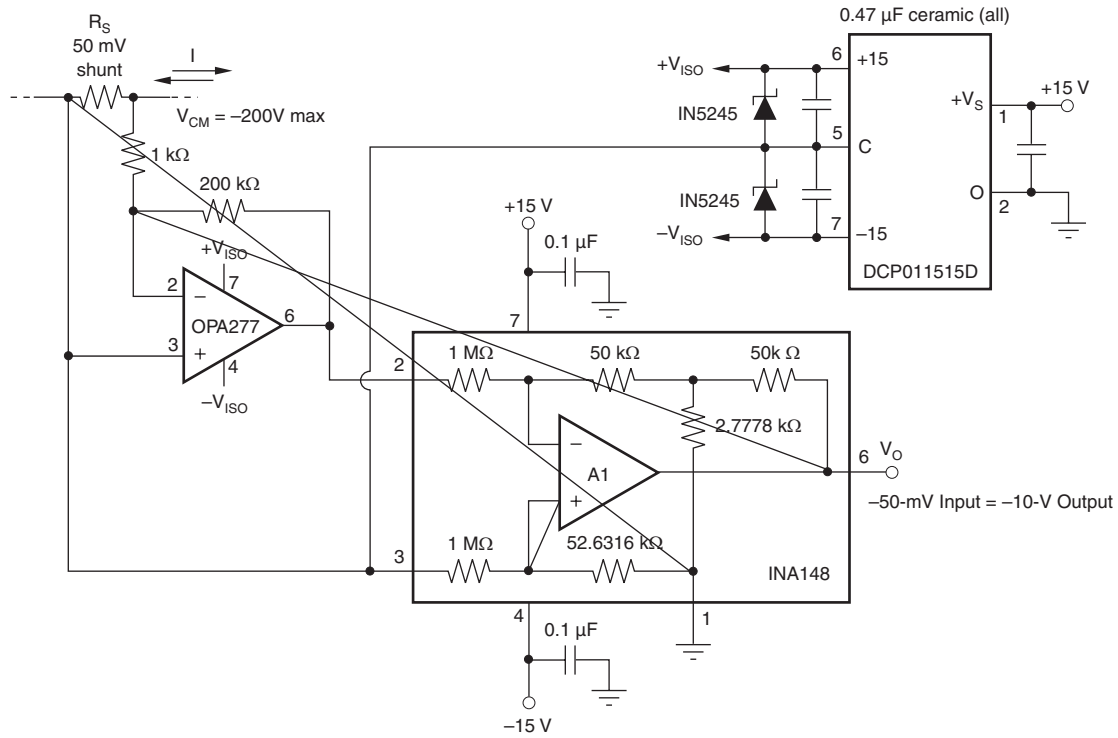
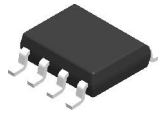


Figure 9. 50-mV Current-Shunt Amplifier with ±200-V Common-Mode Voltage Range

REVISION HISTORY

Changes from Original (March 2009) to Revision A	Page
• Features Bullet From: Low Quiescent Current: 260 mA To: Low Quiescent Current: 260 μA	1

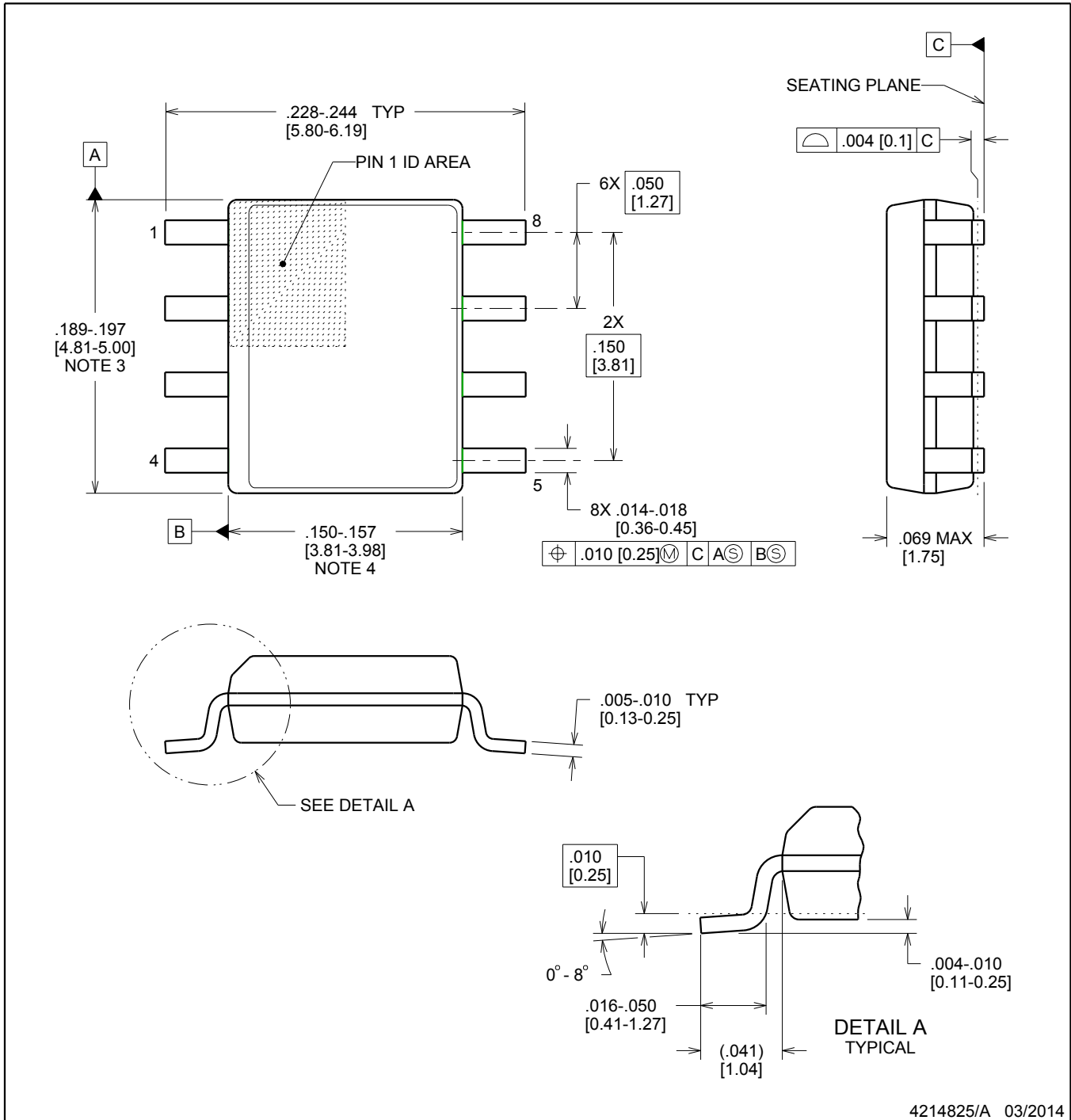
D0008A



PACKAGE OUTLINE

SOIC - 1.75 mm max height

SOIC



4214825/A 03/2014

NOTES:

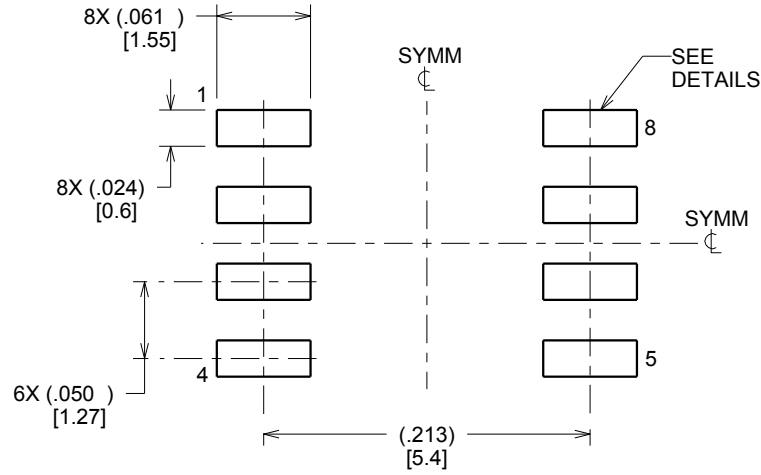
1. Linear dimensions are in inches [millimeters]. Dimensions in parenthesis are for reference only. Controlling dimensions are in inches. Dimensioning and tolerancing per ASME Y14.5M.
2. This drawing is subject to change without notice.
3. This dimension does not include mold flash, protrusions, or gate burrs. Mold flash, protrusions, or gate burrs shall not exceed .006 [0.15] per side.
4. This dimension does not include interlead flash.
5. Reference JEDEC registration MS-012, variation AA.

EXAMPLE BOARD LAYOUT

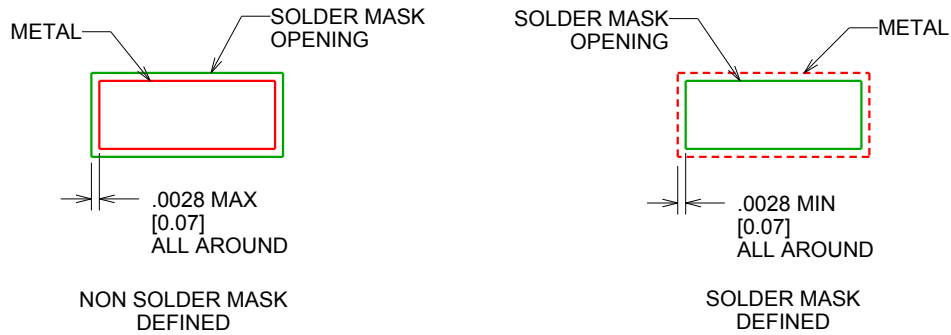
D0008A

SOIC - 1.75 mm max height

SOIC



LAND PATTERN EXAMPLE
SCALE:8X



SOLDER MASK DETAILS

4214825/A 03/2014

NOTES: (continued)

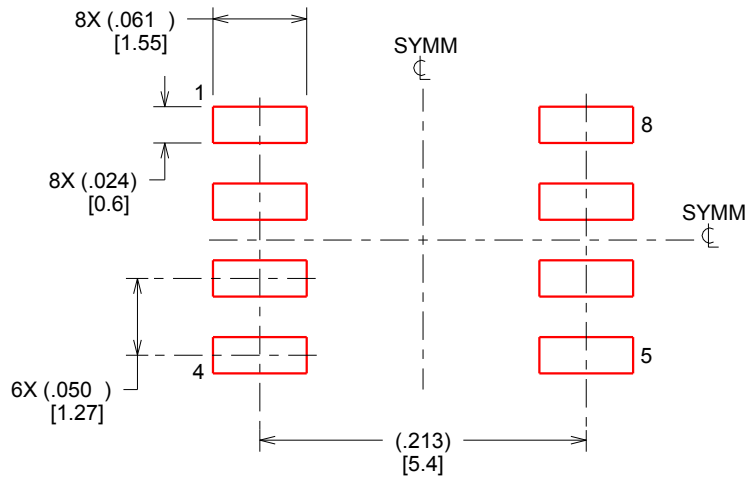
- 6. Publication IPC-7351 may have alternate designs.
- 7. Solder mask tolerances between and around signal pads can vary based on board fabrication site.

EXAMPLE STENCIL DESIGN

D0008A

SOIC - 1.75 mm max height

SOIC




SOLDER PASTE EXAMPLE
BASED ON .005 INCH [0.125 MM] THICK STENCIL
SCALE:8X

4214825/A 03/2014

NOTES: (continued)

8. Laser cutting apertures with trapezoidal walls and rounded corners may offer better paste release. IPC-7525 may have alternate design recommendations.
9. Board assembly site may have different recommendations for stencil design.

PACKAGING INFORMATION

Orderable Device	Status (1)	Package Type	Package Drawing	Pins	Package Qty	Eco Plan (2)	Lead/Ball Finish	MSL Peak Temp (3)	Op Temp (°C)	Device Marking (4/5)	Samples
INA148QDRQ1	ACTIVE	SOIC	D	8	2500	Green (RoHS & no Sb/Br)	CU NIPDAU	Level-3-260C-168 HR	-40 to 125	148Q1	

(1) The marketing status values are defined as follows:

ACTIVE: Product device recommended for new designs.

LIFEBUY: TI has announced that the device will be discontinued, and a lifetime-buy period is in effect.

NRND: Not recommended for new designs. Device is in production to support existing customers, but TI does not recommend using this part in a new design.

PREVIEW: Device has been announced but is not in production. Samples may or may not be available.

OBSOLETE: TI has discontinued the production of the device.

(2) Eco Plan - The planned eco-friendly classification: Pb-Free (RoHS), Pb-Free (RoHS Exempt), or Green (RoHS & no Sb/Br) - please check <http://www.ti.com/productcontent> for the latest availability information and additional product content details.

TBD: The Pb-Free/Green conversion plan has not been defined.

Pb-Free (RoHS): TI's terms "Lead-Free" or "Pb-Free" mean semiconductor products that are compatible with the current RoHS requirements for all 6 substances, including the requirement that lead not exceed 0.1% by weight in homogeneous materials. Where designed to be soldered at high temperatures, TI Pb-Free products are suitable for use in specified lead-free processes.

Pb-Free (RoHS Exempt): This component has a RoHS exemption for either 1) lead-based flip-chip solder bumps used between the die and package, or 2) lead-based die adhesive used between the die and leadframe. The component is otherwise considered Pb-Free (RoHS compatible) as defined above.

Green (RoHS & no Sb/Br): TI defines "Green" to mean Pb-Free (RoHS compatible), and free of Bromine (Br) and Antimony (Sb) based flame retardants (Br or Sb do not exceed 0.1% by weight in homogeneous material)

(3) MSL, Peak Temp. -- The Moisture Sensitivity Level rating according to the JEDEC industry standard classifications, and peak solder temperature.

(4) There may be additional marking, which relates to the logo, the lot trace code information, or the environmental category on the device.

(5) Multiple Device Markings will be inside parentheses. Only one Device Marking contained in parentheses and separated by a "~" will appear on a device. If a line is indented then it is a continuation of the previous line and the two combined represent the entire Device Marking for that device.

Important Information and Disclaimer: The information provided on this page represents TI's knowledge and belief as of the date that it is provided. TI bases its knowledge and belief on information provided by third parties, and makes no representation or warranty as to the accuracy of such information. Efforts are underway to better integrate information from third parties. TI has taken and continues to take reasonable steps to provide representative and accurate information but may not have conducted destructive testing or chemical analysis on incoming materials and chemicals. TI and TI suppliers consider certain information to be proprietary, and thus CAS numbers and other limited information may not be available for release.

In no event shall TI's liability arising out of such information exceed the total purchase price of the TI part(s) at issue in this document sold by TI to Customer on an annual basis.

OTHER QUALIFIED VERSIONS OF INA148-Q1 :

- Catalog: [INA148](#)

NOTE: Qualified Version Definitions:

- Catalog - TI's standard catalog product

TAPE AND REEL INFORMATION



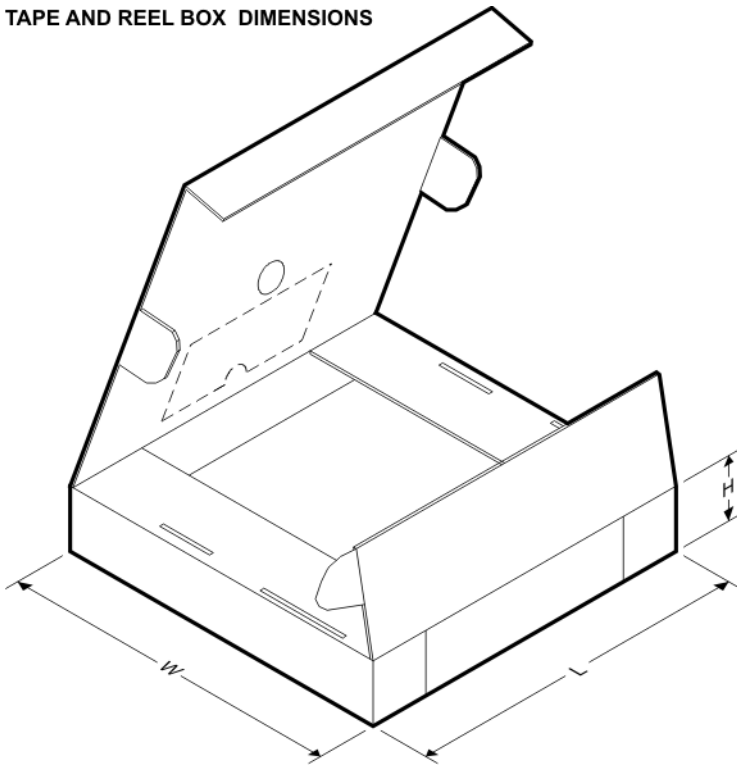
QUADRANT ASSIGNMENTS FOR PIN 1 ORIENTATION IN TAPE



*All dimensions are nominal

Device	Package Type	Package Drawing	Pins	SPQ	Reel Diameter (mm)	Reel Width W1 (mm)	A0 (mm)	B0 (mm)	K0 (mm)	P1 (mm)	W (mm)	Pin1 Quadrant
INA148QDRQ1	SOIC	D	8	2500	330.0	12.4	6.4	5.2	2.1	8.0	12.0	Q1

TAPE AND REEL BOX DIMENSIONS



*All dimensions are nominal

Device	Package Type	Package Drawing	Pins	SPQ	Length (mm)	Width (mm)	Height (mm)
INA148QDRQ1	SOIC	D	8	2500	367.0	367.0	35.0

IMPORTANT NOTICE

Texas Instruments Incorporated and its subsidiaries (TI) reserve the right to make corrections, enhancements, improvements and other changes to its semiconductor products and services per JESD46, latest issue, and to discontinue any product or service per JESD48, latest issue. Buyers should obtain the latest relevant information before placing orders and should verify that such information is current and complete. All semiconductor products (also referred to herein as "components") are sold subject to TI's terms and conditions of sale supplied at the time of order acknowledgment.

TI warrants performance of its components to the specifications applicable at the time of sale, in accordance with the warranty in TI's terms and conditions of sale of semiconductor products. Testing and other quality control techniques are used to the extent TI deems necessary to support this warranty. Except where mandated by applicable law, testing of all parameters of each component is not necessarily performed.

TI assumes no liability for applications assistance or the design of Buyers' products. Buyers are responsible for their products and applications using TI components. To minimize the risks associated with Buyers' products and applications, Buyers should provide adequate design and operating safeguards.

TI does not warrant or represent that any license, either express or implied, is granted under any patent right, copyright, mask work right, or other intellectual property right relating to any combination, machine, or process in which TI components or services are used. Information published by TI regarding third-party products or services does not constitute a license to use such products or services or a warranty or endorsement thereof. Use of such information may require a license from a third party under the patents or other intellectual property of the third party, or a license from TI under the patents or other intellectual property of TI.

Reproduction of significant portions of TI information in TI data books or data sheets is permissible only if reproduction is without alteration and is accompanied by all associated warranties, conditions, limitations, and notices. TI is not responsible or liable for such altered documentation. Information of third parties may be subject to additional restrictions.

Resale of TI components or services with statements different from or beyond the parameters stated by TI for that component or service voids all express and any implied warranties for the associated TI component or service and is an unfair and deceptive business practice. TI is not responsible or liable for any such statements.

Buyer acknowledges and agrees that it is solely responsible for compliance with all legal, regulatory and safety-related requirements concerning its products, and any use of TI components in its applications, notwithstanding any applications-related information or support that may be provided by TI. Buyer represents and agrees that it has all the necessary expertise to create and implement safeguards which anticipate dangerous consequences of failures, monitor failures and their consequences, lessen the likelihood of failures that might cause harm and take appropriate remedial actions. Buyer will fully indemnify TI and its representatives against any damages arising out of the use of any TI components in safety-critical applications.

In some cases, TI components may be promoted specifically to facilitate safety-related applications. With such components, TI's goal is to help enable customers to design and create their own end-product solutions that meet applicable functional safety standards and requirements. Nonetheless, such components are subject to these terms.

No TI components are authorized for use in FDA Class III (or similar life-critical medical equipment) unless authorized officers of the parties have executed a special agreement specifically governing such use.

Only those TI components which TI has specifically designated as military grade or "enhanced plastic" are designed and intended for use in military/aerospace applications or environments. Buyer acknowledges and agrees that any military or aerospace use of TI components which have **not** been so designated is solely at the Buyer's risk, and that Buyer is solely responsible for compliance with all legal and regulatory requirements in connection with such use.

TI has specifically designated certain components as meeting ISO/TS16949 requirements, mainly for automotive use. In any case of use of non-designated products, TI will not be responsible for any failure to meet ISO/TS16949.

Products

Audio	www.ti.com/audio
Amplifiers	amplifier.ti.com
Data Converters	dataconverter.ti.com
DLP® Products	www.dlp.com
DSP	dsp.ti.com
Clocks and Timers	www.ti.com/clocks
Interface	interface.ti.com
Logic	logic.ti.com
Power Mgmt	power.ti.com
Microcontrollers	microcontroller.ti.com
RFID	www.ti-rfid.com
OMAP Applications Processors	www.ti.com/omap
Wireless Connectivity	www.ti.com/wirelessconnectivity

Applications

Automotive and Transportation	www.ti.com/automotive
Communications and Telecom	www.ti.com/communications
Computers and Peripherals	www.ti.com/computers
Consumer Electronics	www.ti.com/consumer-apps
Energy and Lighting	www.ti.com/energy
Industrial	www.ti.com/industrial
Medical	www.ti.com/medical
Security	www.ti.com/security
Space, Avionics and Defense	www.ti.com/space-avionics-defense
Video and Imaging	www.ti.com/video

TI E2E Community

e2e.ti.com