

AC INLETS & OUTLETS

IEC 320 & MINI IEC CONNECTORS

IEC SERIES



ORDERING INFORMATION

IEC

SERIES INDICATOR
IEC = International inlet/outlet

A

BODY STYLE

- A = Male Inlet, Screw-on panel mount
- B = Female Outlet, Screw-on panel mount
- C = Male Inlet, Snap-in panel mount
- D = Female Outlet, Snap-in panel mount
- E = Male Inlet, Right Angle PC board mount with mounting flange (Specify EW, EX, EY or EZ)
- F = Male Inlet, Screw on panel mount with 5 x 20mm fuse holder
- G = Male Inlet, Snap-in panel mount with 5 x 20mm fuse holder
- HS = Inlet/Outlet, snap-in panel mount
- HR = Inlet/outlet, snap-in panel mount, right angle PCB mount
- J = Male inlet, right angle PCB & tail with snap-in panel mounting
- NA = Mini-IEC right angle, snap-in
- NB = Mini-IEC right angle, slide-in
- NB-A = Mini-IEC right angle, slide-in with pegs
- NC = Mini-IEC right angle, with flush flange
- NC-A = Mini-IEC right angle, with extended face
- ND = Mini-IEC right angle, with enclosed body
- NF = Mini-IEC right angle, polarized with flange
- NH = Mini-IEC right angle, with ground pin
- NH-A = Mini-IEC right angle, flange mount with ground pin
- GS = Fused inlet with switch snap in panel mount
- FS = Fused inlet with switch screw on panel mount
- M = Female outlet, 20 AMP, Flanged
- N = Male inlet, 20 AMP, Snap-In

1

TERMINALS

- 1 = .187" Quick-connect terminals
- 2 = .250" Quick-connect terminals
- 3 = Solder terminals .157" [4.0mm]
- 4 = Right Angle PCB mount
- 5 = Solder Terminals .098" [2.5mm]

PANEL THICKNESS

- (for body styles C, D & J only)
- Blank** = Universal Snap
- 080** = 0.8mm Panel
 - 120** = 1.2mm Panel
 - 150** = 1.5mm Panel
 - 200** = 2.0mm Panel
 - 300** = 3.0mm Panel

OPTIONS:

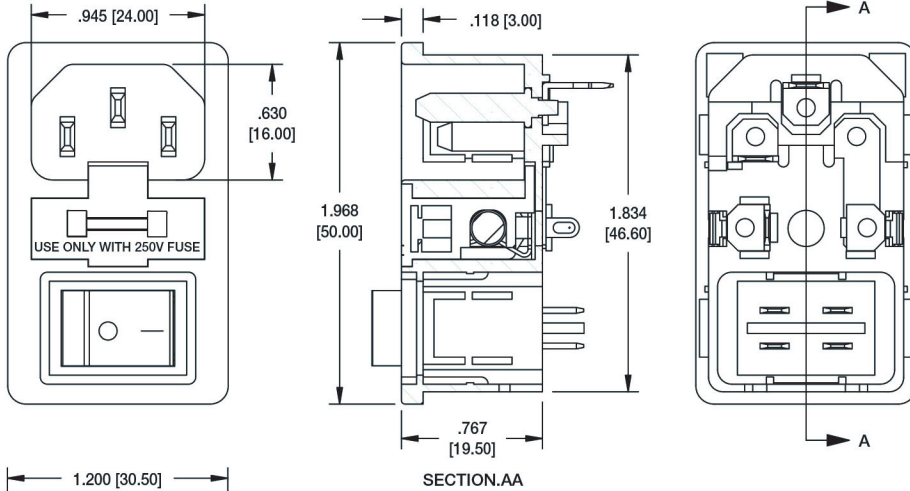
K = Keyed for 120° C (Body Styles A, C, E & J)

AC INLETS & OUTLETS

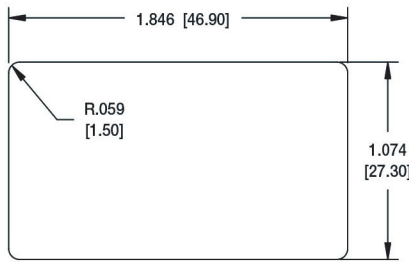
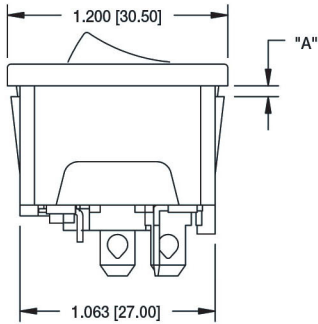
IEC 320 CONNECTORS IEC SERIES

IEC-GS-1

FUSED INLET WITH SWITCH,
SNAP IN PANEL MOUNT

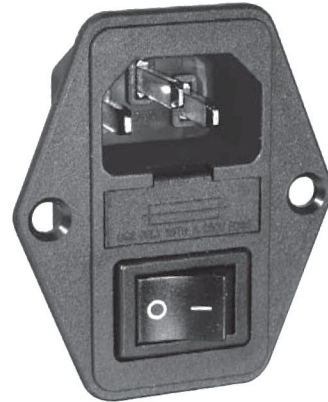


PART NUMBER	DIM "A"
IEC-GS-1-100	.039 [1.00]
IEC-GS-1-150	.059 [1.50]
IEC-GS-1-200	.079 [2.00]



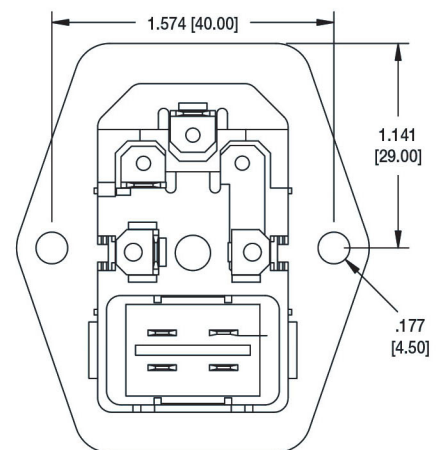
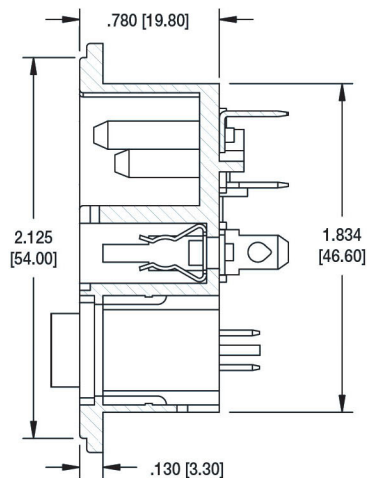
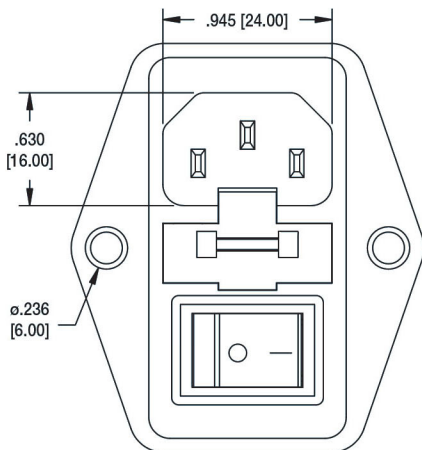
Recommended Panel Cut-Out

IEC-GS-1-100



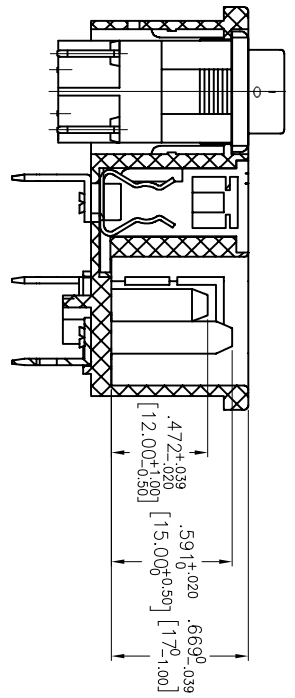
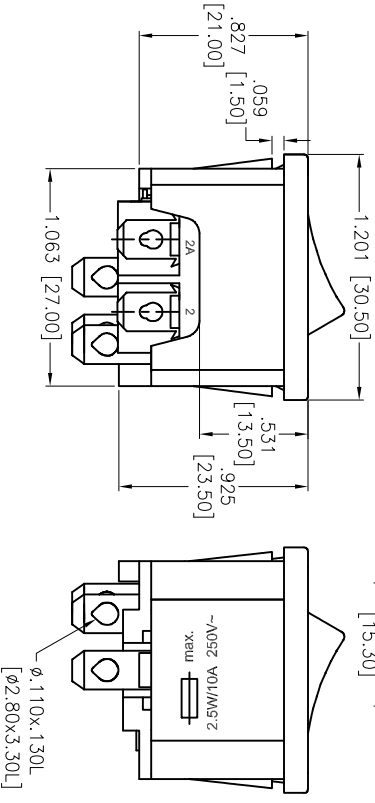
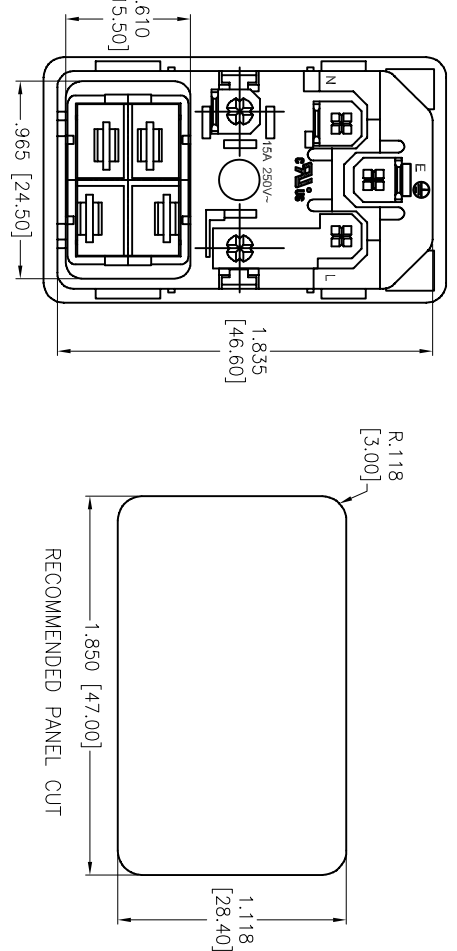
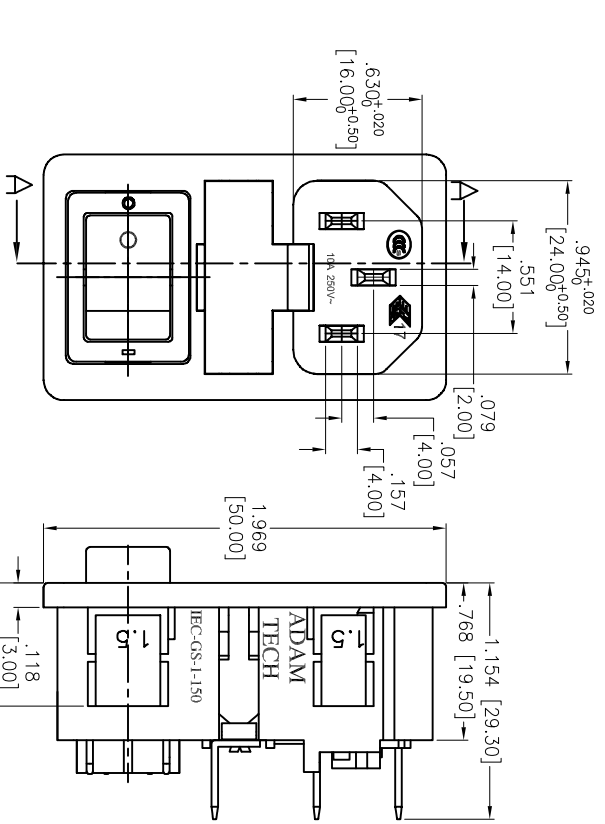
IEC-FS-1

IEC-FS-1
FUSED INLET WITH SWITCH,
SCREW ON PANEL MOUNT



APPROVED: _____
 DATE: _____ TITLE: _____

Rev	AWO #	Description	Date	Appr
-		RELEASED	05/31/13	
A		REVISED SHAPE	06/17/13	



Switch Pin Reverse

SPECIFICATIONS:
 Material: Nylon66, rated UL 94V-0
 Insulator color: Black
 Contacts: Brass
 Plating: Tin over Copper underplate
 Electrical:
 Current rating: 15A / 250V (C-ULus)
 10A / 250V (ENEC & CCC)
 Insulation resistance: 100 Mohms min @ 500 VDC
 Dielectric withstanding voltage: 3000 VAC for 1 minute
 Environmental:
 Lead free, RoHS compliant.

UNLESS OTHERWISE SPECIFIED
 ALL DIMENSIONS ARE MM [INCHES]
 TOLERANCES: EXCEPT AS NOTED
 INCHES HOLE±.10
 .X ±.10 ØXX ±.10
 .XX ±.020 ØXXX ±.015
 .XXX ±.015 ØXXXX ±.010
 APPROVALS DATE



DRAWN	TW	05/31/13	SIZE	PART NO.	REV.
CHECKED	NP	05/31/13	X	IEC-GS-1-150-SPR	A
APPROVED			REF:	S00087C	SHEET 1 OF 1
UNLESS OTHERWISE SPECIFIED ALL DIMENSIONS ARE MM [INCHES] TOLERANCES: EXCEPT AS NOTED INCHES HOLE±.10 .X ±.10 ØXX ±.10 .XX ±.020 ØXXX ±.015 .XXX ±.015 ØXXXX ±.010 APPROVALS DATE			ADAM TECH 909 Rahway Avenue, Union, NJ 07083 Phone: 908-687-5000 Fax: 908-687-5710 IEC CONNECTOR, ISOLATED FUSE, C18 1.50mm SNAP IN, .187" [4.8] QC TERMINAL		