

HTSS-1XX-XX-X-D-EM

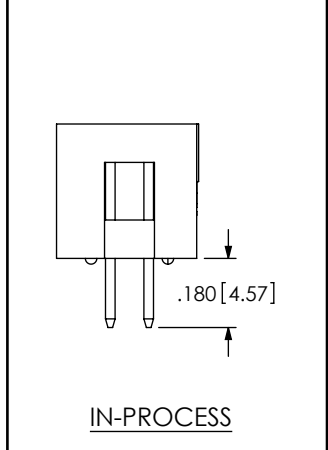
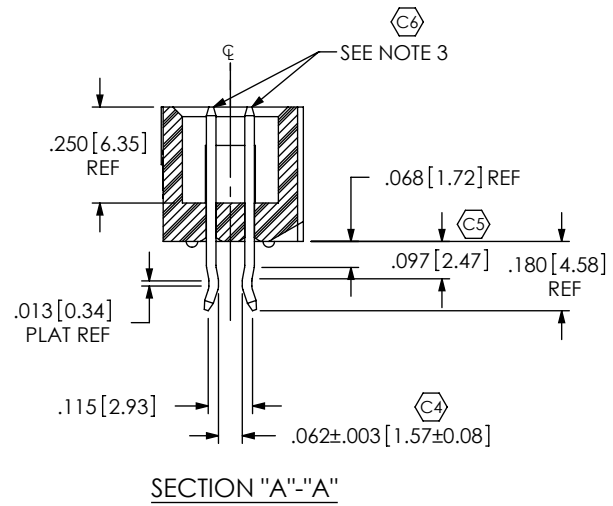
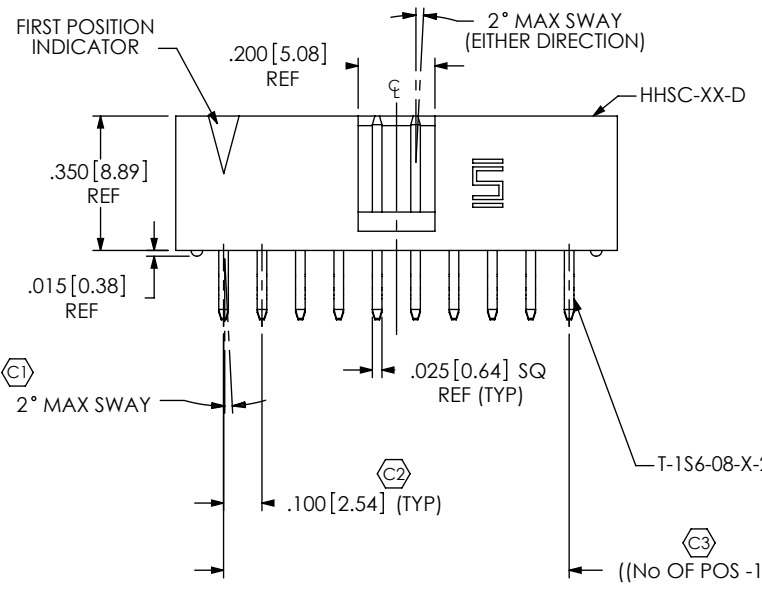
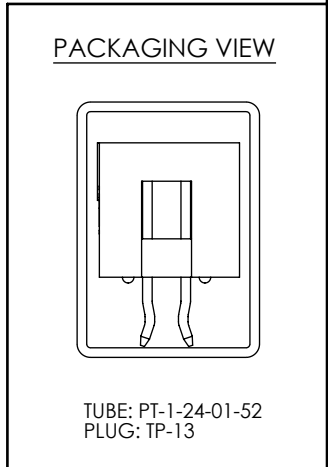
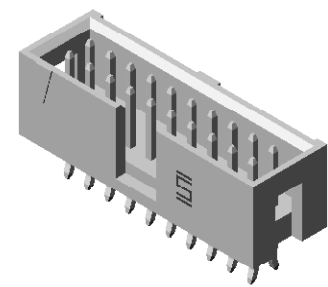
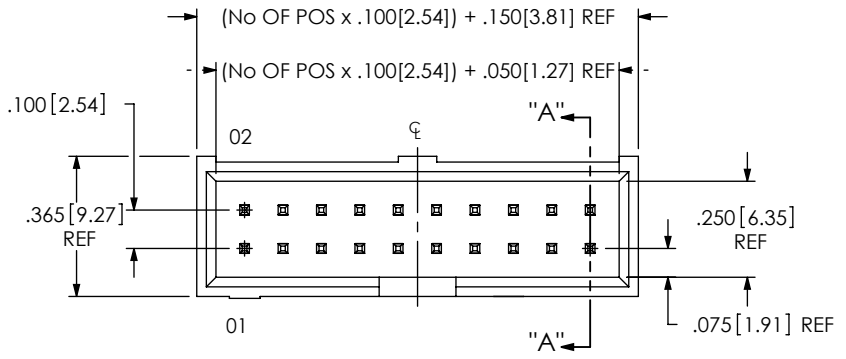
No OF POSITIONS
-02 THRU -25
(PER ROW)

LEAD STYLE
-01: USE T-1S6-08-X-2

-EM: EDGE MOUNT

-D: DOUBLE ROW

PLATING SPECIFICATION
-H: HEAVY GOLD (USE T-1S6-08-H-2)
-S: SELECTIVE GOLD (USE T-1S6-08-S-2)



NOTES:

1. C REPRESENTS A CRITICAL DIMENSION.
2. TERMINAL PUSHOUT FORCE: 2 LBS BEFORE HEAT.
3. TERMINALS TO BE FLUSH TO .010 [0.25] BELOW TOP OF SHROUD.
4. PARTS TO BE PACKAGED IN TUBES.

<p>UNLESS OTHERWISE SPECIFIED, DIMENSIONS ARE IN INCHES. TOLERANCES ARE:</p> <p>DECIMALS ANGLES</p> <p>.XX: ±.01 [.3] 2°</p> <p>.XXX: ±.005 [.13]</p> <p>.XXXX: ±.0020 [.051]</p>	<p>PROPRIETARY NOTE</p> <p>THIS DOCUMENT CONTAINS INFORMATION CONFIDENTIAL AND PROPRIETARY TO SAMTEC, INC. AND SHALL NOT BE REPRODUCED OR TRANSFERRED TO OTHER DOCUMENTS OR DISCLOSED TO OTHERS OR USED FOR ANY PURPOSE OTHER THAN THAT WHICH IT WAS OBTAINED WITHOUT THE EXPRESSED WRITTEN CONSENT OF SAMTEC, INC.</p>	<p>520 PARK EAST BLVD, NEW ALBANY, IN 47150 PHONE: 812-944-6733 FAX: 812-948-5047 e-Mail: info@SAMTEC.com code: 55322</p>
<p>MATERIAL: DO NOT SCALE DRAWING SHEET SCALE: 2:1</p> <p>INSULATOR: LCP F</p> <p>COLOR: NATURAL</p> <p>CONTACT: PHOSPHOR BRONZE</p>	<p>DESCRIPTION: .100[2.54] C.L. EDGE MOUNT TERMINAL STRIP</p> <p>DWG. NO. HTSS-1XX-XX-X-D-EM</p>	<p>BY: BRATCHER 07/16/2003 SHEET 1 OF 1</p>