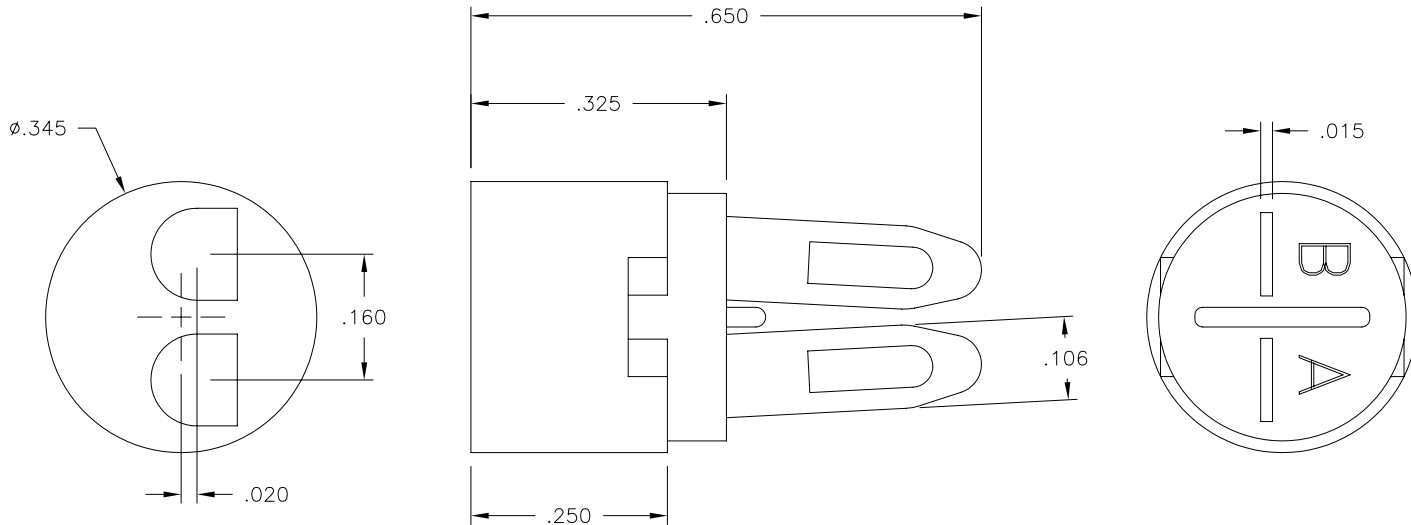
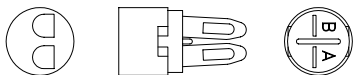


| LTR | REVISION | DATE | APPD |
|-----|----------|----------|------|
| - | RELEASED | 01-17-07 | |

Actual Size



NOTES:

- INSULATOR MATERIAL: BLACK MOLDED PHENOLIC
- TERMINAL: TIN PLATED BERYLLIUM COPPER

| REVISION NOTIFICATION | |
|--------------------------|----------------|
| <input type="checkbox"/> | PMA |
| <input type="checkbox"/> | UL |
| <input type="checkbox"/> | CUSTOMER _____ |
| <input type="checkbox"/> | OTHER |

LED[®]
LEDTRONICS,™ INC.
 23105 KASHIWA COURT
 TORRANCE, CA 90505

-PROPRIETARY-
 This document contains Proprietary information of LEDTRONICS,™ INC. It may not be copied, used or disclosed for any purpose without the prior express written consent of LEDTRONICS,™ INC.

.XXX ± .010 TOLERANCE PER ANSI-Y14.5
 .XX ± .025 (UNLESS OTHERWISE STATED)
 ANGLES ± 0°,30'
 FRACT. ± 1/32

| | | | | | | | |
|-----------------------------|--------------|--------------|----------|-----------------|---------------------|------------------|--|
| TITLE HLDR-WSF291 | | | | | | | |
| DWG NO CMHD0208 | | SCALE 4:1 | | SHEET 1 OF 1 | | DATE 01-17-07 | |
| CODE IDENT NO. 8Z410 | DWG BY GP | CHK BY PL | QA GZ | MNFG | CUSTOMER GENERIC | | |
| | | 01-18-07 | | 01-18-07 | | | |