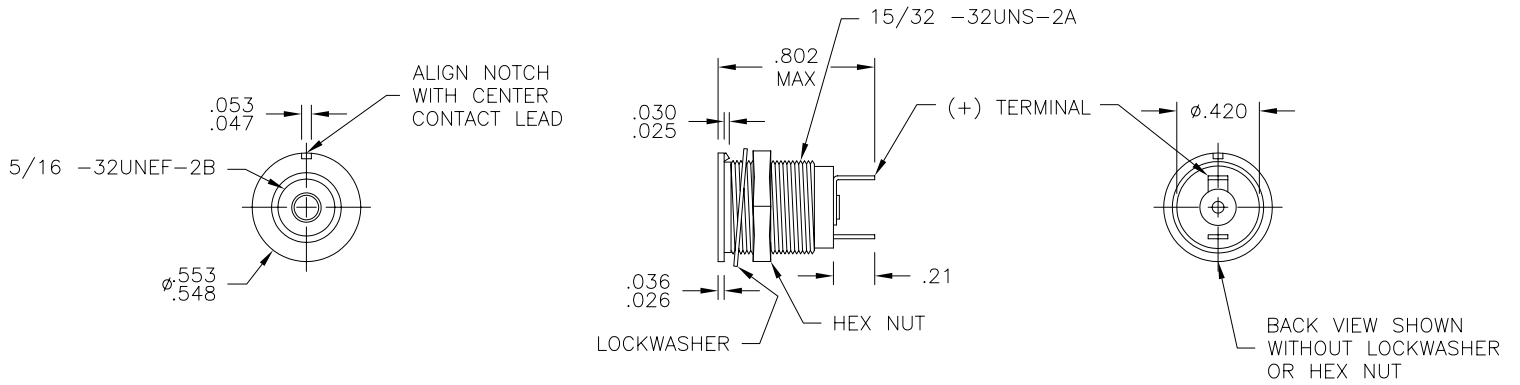


LTR	REVISION	DATE	APPD
C	100510-PL01: ADDED NOTE#7	10-05-10	GP



MATERIALS AND FINISHES:

HOUSING: ALUMINUM IRIDITE
 HEX NUT: STEEL. CAD. PLATE
 TERMINALS: BRASS ELCTRO TIN & FUSE
 LOCKWASHER: STEEL. CAD. PLATE

NOTES:

1. MOUNTING DIAMETER 15/32"
2. HOLDER ACCEPTS T1-3/4 MIDGET FLANGE BASE LED LAMP.
3. HOLDERS MEET MIL SPEC MIL-3661
4. RMM470B IS MIL TYPE LH73/2
5. TEMPERATURE OPERATING: -55°C TO +85°C
6. STORAGE (NONE OPERATING): -65°C TO +95°C
7. HEX NUT SUGGESTED TIGHTENING TORQUE 10-15in lbs.



REVISION NOTIFICATION	
<input type="checkbox"/>	PMA
<input type="checkbox"/>	UL
<input type="checkbox"/>	CUSTOMER _____
<input type="checkbox"/>	OTHER

LED[®]
LEDTRONICS,™ INC.
 23105 KASHIWA COURT
 TORRANCE, CA 90505

-PROPRIETARY-
 This document contains Proprietary information of LEDTRONICS,™ INC. It may not be copied, used or disclosed for any purpose without the prior express written consent of LEDTRONICS,™ INC.

.XXX ± .010 TOLERANCE PER ANSI-Y14.5
 .XX ± .025 (UNLESS OTHERWISE STATED)
 ANGLES ± 0°,30'
 FRACT. ± 1/32

TITLE					
HLDR-RMM64-YO					
DWG NO	SCALE	SHEET	DATE		
CMHD0054-CUST	1:1	1 OF 1	12-02-08		
CODE IDENT NO.	DWG BY	CHK BY	QA	MFG	R&D
8Z410	GP 12-02-08	PL 10-06-10			BJ 10-05-10