

HDC insert HDC HA 10 MC

Weidmüller Interface GmbH & Co. KG
 Klingenbergstraße 16
 D-32758 Detmold
 Germany
 Fon: +49 5231 14-0
 Fax: +49 5231 14-292083
 www.weidmueller.com



The small and thin HA series can be used wherever space is limited.

The wire connection level is designed as a crimp contact. The established crimp connection has been used as a standard for decades.

Crimp contacts are not delivered with the inserts.

Pole count: 10

Rated current: 22 A

Rated voltage 250 V

Nominal voltage acc. to UL/CSA: 600 V AC/DC

Crimp connection

General ordering data

Type	HDC HA 10 MC
Order No.	1873870000
Version	HDC insert, Male, 250 V, 16 A, No. of poles: 10, Crimp connection, Size: 2
GTIN (EAN)	4032248458387
Qty.	1 pc(s).

**HDC insert
HDC HA 10 MC**

Weidmüller Interface GmbH & Co. KG
 Klingenbergstraße 16
 D-32758 Detmold
 Germany
 Fon: +49 5231 14-0
 Fax: +49 5231 14-292083
 www.weidmueller.com

Technical data**Dimensions and weights**

Length	56.6 mm	Length (inches)	2.228 inch
Width	23 mm	Width (inches)	0.906 inch
Height	29 mm	Height (inches)	1.142 inch
Net weight	28 g		

Temperatures

Limit temperature	-40 °C ... 125 °C
-------------------	-------------------

Dimensions

Height of plug	29 mm	Total length base	56.6 mm
----------------	-------	-------------------	---------

General data

Conductor cross-section	2.5 mm ²	Insulating material	PC glass-fibre reinforced (UL-listed and railway-certified)
Insulating material group	IIIa	Insulation resistance	10 ¹⁰ Ω
Material	Copper alloy	No. of poles	10
Plugging cycles, gold	≥ 500	Plugging cycles, silver	≥ 500
Pollution severity	3	Rated current (DIN EN 61984)	16 A
Rated impulse voltage (DIN EN 61984)	4 kV	Rated voltage (DIN EN 61984)	250 V
Rated voltage according to UL/CSA	600 V AC/DC	Series	HA
Size	2	Surface finish	Silver passivated, gold
Type	Male	UL 94 flammability rating	V-0
Volume resistance	≤ 2mΩ		

Connection data PE

Blade size, crosshead	size PH1	Blade size, slotted (PE connection)	SD 0.8 x 4.0
Connection type PE	Screw connection	Fixing screw	M 4
Rated cross-section	2.5 mm ²	Stripping length PE connection	10 mm
Tightening torque, max. PE connection	1.5 Nm	Tightening torque, min. PE connection	1.2 Nm
Wire connection cross section, finely stranded, max.	2.5 mm ²	Wire connection cross-section, finely stranded with wire-end ferrules DIN 46228/4, max.	2.5 mm ²
Wire connection cross-section, finely stranded with wire-end ferrules DIN 46228/4, min.	0.5 mm ²	Wire connection cross-section, finely stranded, min.	0.5 mm ²
Wire cross section, AWG (PE), max.	AWG 14	Wire cross section, AWG (PE), min.	AWG 20
Wire cross-section, solid, max.	2.5 mm ²	Wire cross-section, solid, min.	0.5 mm ²

**HDC insert
HDC HA 10 MC**

Weidmüller Interface GmbH & Co. KG
 Klingenbergstraße 16
 D-32758 Detmold
 Germany
 Fon: +49 5231 14-0
 Fax: +49 5231 14-292083
 www.weidmueller.com

Technical data**Version**

Conductor cross-section, max.	4 mm ²	Conductor cross-section, min.	0.5 mm ²
Material	Copper alloy	Size	2
Stripping length, rated connection	8 mm	Surface finish	Silver passivated, gold
Type of connection	Crimp connection	Volume resistance	≤ 2mΩ
Wire connection cross section AWG, max.	AWG 12	Wire connection cross section AWG, min.	AWG 20
Wire connection cross section, finely stranded, max.	2.5 mm ²	Wire connection cross-section, finely stranded with wire-end ferrules DIN 46228/4, max.	2.5 mm ²
Wire connection cross-section, finely stranded with wire-end ferrules DIN 46228/4, min.	0.5 mm ²	Wire connection cross-section, finely stranded, min.	0.5 mm ²
Wire cross-section, solid, max.	2.5 mm ²	Wire cross-section, solid, min.	0.5 mm ²

Classifications

ETIM 3.0	EC000796	ETIM 4.0	EC000438
ETIM 5.0	EC000438	ETIM 6.0	EC000438
UNSPSC	30-21-18-01	eClass 5.1	27-14-34-19
eClass 6.2	27-26-12-04	eClass 7.1	27-44-02-05
eClass 8.1	27-44-02-05	eClass 9.0	27-44-02-05
eClass 9.1	27-44-02-05		

Product information

Descriptive text technical data	Rated voltage 320 V / 4 kV at pollution degree 2
Descriptive text accessories	Accessories, see chapter J - Tools, see chapter K

Approvals

Approvals



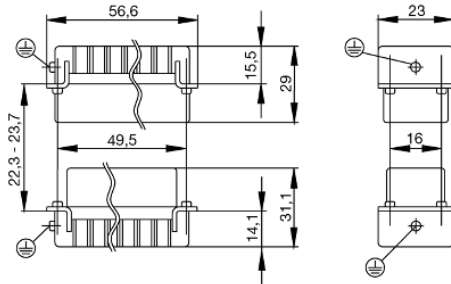
ROHS Conform

Downloads

Brochure/Catalogue	CAT 3 HDC 17/18 EN FL FIELDWIRING EN
Engineering Data	EPLAN, WSCAD
Technical Documentation	1873870000 HDC_HA_10_MC_STP_Blatt_1.pdf

Data sheet**HDC insert
HDC HA 10 MC**

Weidmüller Interface GmbH & Co. KG
Klingenbergstraße 16
D-32758 Detmold
Germany
Fon: +49 5231 14-0
Fax: +49 5231 14-292083
www.weidmueller.com

Drawings

Data sheet

**HDC insert
HDC HA 10 MC**

Weidmüller Interface GmbH & Co. KG
 Klingenbergstraße 16
 D-32758 Detmold
 Germany
 Fon: +49 5231 14-0
 Fax: +49 5231 14-292083
 www.weidmueller.com

Accessories

... for milled contacts



Crimping tools for turned contacts

- Ratchet guarantees precise crimping
- Release option in the event of incorrect operation
- With stop for exact positioning of the contacts.

General ordering data

Type	Order No.	Version	GTIN (EAN)	Qty.
CTIN CM 1.6/2.5	9205430000	Crimping tool, Crimping tool for contacts, 0.14mm ² , 6mm ² , 4-indent crimp	4032248733446	1 pc(s).
CTX CM 1.6/2.5	9018490000	Crimping tool, Crimping tool for contacts, 0.14mm ² , 4mm ² , W crimp	4008190884598	1 pc(s).

Crosshead screwdriver Phillips

Crosshead screwdriver, Phillips, SDK PH DIN 5262, ISO 8764/2-PH, output to ISO 8764-PH, ChromTop tip, SoftFinish grip



General ordering data

Type	Order No.	Version	GTIN (EAN)	Qty.
SDK PH1	9008480000	Screwdriver, Blade width (B): 4.5 mm, Blade length: 80 mm	4032248056477	1 pc(s).

**HDC insert
HDC HA 10 MC**

Weidmüller Interface GmbH & Co. KG
 Klingenbergstraße 16
 D-32758 Detmold
 Germany
 Fon: +49 5231 14-0
 Fax: +49 5231 14-292083
 www.weidmueller.com

Accessories

Crosshead screwdriver Phillips

VDE insulated crosshead screwdriver, for Phillips screws, SDIK PH DIN 7438, ISO 8764/2-PH, output to ISO 8764-PH, SoftFinish grip



General ordering data

Type	Order No.	Version	GTIN (EAN)	Qty.
SDIK PH1	9008570000	Screwdriver, Blade length: 80 mm	4032248056569	1 pc(s).

Slotted screwdriver

Slotted screwdriver with rounded blade SD DIN 5265, ISO 2380/2, output to DIN 5264, ISO 2380/1. ChromTop tip, SoftFinish grip



General ordering data

Type	Order No.	Version	GTIN (EAN)	Qty.
SDS 0.8X4.0X100	9008340000	Screwdriver, Blade width (B): 4 mm, Blade length: 100 mm, Blade thickness (A): 0.8 mm	4032248056293	1 pc(s).

Tools

Tools for removing the sheathing of uncut power cables and outgoing feeders, plus screwdrivers for installing FieldPower components.



General ordering data

Type	Order No.	Version	GTIN (EAN)	Qty.
SDS 0.6X3.5X100	9008330000	Screwdriver, Blade width (B): 3.5 mm, Blade length:	4032248056286	1 pc(s).

**HDC insert
HDC HA 10 MC**

Weidmüller Interface GmbH & Co. KG
 Klingenbergstraße 16
 D-32758 Detmold
 Germany
 Fon: +49 5231 14-0
 Fax: +49 5231 14-292083
 www.weidmueller.com

Accessories

100 mm, Blade thickness
 (A): 0.6 mm

Crimp contacts HE

Crimps provide a electrical and mechanical connection between wire and contact that is both secure and reliable. The optimal crimp connection is gas-tight and corrosion-resistant.

General ordering data

Type	Order No.	Version	GTIN (EAN)	Qty.
HDC-C-HE- SM4.0AG	1200900000	Heavy Duty Connectors, Crimp contact, HE, HEE, HQ, MixMate, Male, Conductor cross-section, max.: 4, turned, Copper alloy	4008190115906	100 pc(s).
HDC-C-HE- SM4.65AU	1116540000	Heavy Duty Connectors, Crimp contact, HE, HEE, HQ, MixMate, Male, Conductor cross-section, max.: 4.65, turned, Copper alloy	4032248897261	100 pc(s).
HDC-C-HE- SM0.5AG	1200500000	Heavy Duty Connectors, Crimp contact, HE, HEE, HQ, MixMate, Male, Conductor cross-section, max.: 0.5, turned, Copper alloy	4008190159627	100 pc(s).
HDC-C-HE- SM2.5AG	1200800000	Heavy Duty Connectors, Crimp contact, HE, HEE, HQ, MixMate, Male, Conductor cross-section, max.: 2.5, turned, Copper alloy	4008190131913	100 pc(s).
HDC-C-HE- SM0.75-1.00AU	1651430000	Heavy Duty Connectors, Crimp contact, HE, HEE, HQ, MixMate, Male, Conductor cross-section, max.: 1, turned, Copper alloy	4008190400101	100 pc(s).
HDC-C-HE- SM1.5AG	1200700000	Heavy Duty Connectors, Crimp contact, HE, HEE, HQ, MixMate, Male, Conductor cross-section, max.: 1.5, turned, Copper alloy	4008190074920	100 pc(s).

Creation date June 7, 2018 10:53:19 AM CEST

Catalogue status 05.06.2018 / We reserve the right to make technical changes.

HDC insert HDC HA 10 MC

Weidmüller Interface GmbH & Co. KG
 Klingenbergstraße 16
 D-32758 Detmold
 Germany
 Fon: +49 5231 14-0
 Fax: +49 5231 14-292083
 www.weidmueller.com

Accessories

HDC-C-HE- SM0.5AU	1651420000	Heavy Duty Connectors, Crimp contact, HE, HEE, HQ, MixMate, Male, Conductor cross-section, max.: 0.5, turned, Copper alloy	4008190400095 100 pc(s).
HDC-C-HE- SM2.5AU	1651450000	Heavy Duty Connectors, Crimp contact, HE, HEE, HQ, MixMate, Male, Conductor cross-section, max.: 2.5, turned, Copper alloy	4008190400125 100 pc(s).
HDC-C-HE- SM4.0AU	1651460000	Heavy Duty Connectors, Crimp contact, HE, HEE, HQ, MixMate, Male, Conductor cross-section, max.: 4, turned, Copper alloy	4008190400132 100 pc(s).
HDC-C-HE- SM0.75-1.00AG	1200600000	Heavy Duty Connectors, Crimp contact, HE, HEE, HQ, MixMate, Male, Conductor cross-section, max.: 1, turned, Copper alloy	4008190171308 100 pc(s).
HDC-C-HE- SM1.5AU	1651440000	Heavy Duty Connectors, Crimp contact, HE, HEE, HQ, MixMate, Male, Conductor cross-section, max.: 1.5, turned, Copper alloy	4008190400118 100 pc(s).

Slotted screwdriver

VDE insulated slot-head screwdriver, SDI DIN 7437, ISO 2380/2, drive output acc. to DIN 5264, ISO 2380/1. SoftFinish grip



General ordering data

Type	Order No.	Version	GTIN (EAN)	Qty.
SDIS 0.8X4.0X100	9008400000	Screwdriver, Blade width (B): 4 mm, Blade length: 100 mm, Blade thickness (A): 0.8 mm	4032248056361	1 pc(s).
SDIS 0.6X3.5X100	9008390000	Screwdriver, Blade width (B): 3.5 mm, Blade length:	4032248056354	1 pc(s).

Data sheet

**HDC insert
HDC HA 10 MC**

Weidmüller Interface GmbH & Co. KG
 Klingenbergstraße 16
 D-32758 Detmold
 Germany
 Fon: +49 5231 14-0
 Fax: +49 5231 14-292083
 www.weidmueller.com

Accessories

100 mm, Blade thickness
 (A): 0.6 mm

Non-contact tools



Tools for dismantling Weidmüller crimp contacts

General ordering data

Type	Order No.	Version	GTIN (EAN)	Qty.
Removal Tool	1866750000	Tools, Contact removal tool	4032248437078	1 pc(s).
HE				

HE

Various accessories are available for our inserts. This includes coding elements for the inserts.



General ordering data

Type	Order No.	Version	GTIN (EAN)	Qty.
HDC HE CP	1003240000	Heavy Duty Connectors, Accessories, Coding System	4032248698233	100 pc(s).

Tightening torques and screwing tools

Screw size	Connector type	Dia. tightening torque in Nm	Recommended blade inserts and AF size for hexagon socket	
M 2.5	Signal contacts			
	S 6/6	0.5 - 0.55	SD 0.6 x 3.5 mm or PZ0	
	S 6/12	0.5 - 0.55	SD 0.6 x 3.5 mm or PZ0	
M 2.9 x 0.5	Fastening screws			
	HQ 4/2	0.8 (plastic) / 1.1 (metal)	SD 0.6 x 3.5 mm or PH0	
	HQ 8	0.8 (plastic) / 1.1 (metal)	SD 0.6 x 3.5 mm or PH0	
	HQ 17	0.8 (plastic) / 1.1 (metal)	SD 0.6 x 3.5 mm or PH0	
M 3	Contact screws			
	HA 3	0.5 - 0.55	SD 0.5 x 3.0 mm	
	HA 4	0.5 - 0.55	SD 0.5 x 3.0 mm	
	HA 10 bis HA 48	0.5 - 0.55	SD 0.6 x 3.5 mm or PH0	
	HE	0.5 - 0.55	SD 0.6 x 3.5 mm or PZ0	
	HVE	0.5 - 0.55	SD 0.6 x 3.5 mm or PZ0	
	Signal contacts:			
	S 4/2	0.5 - 0.55	SD 0.6 x 3.5 mm or PZ0	
	S 4/8	0.5 - 0.55	SD 0.6 x 3.5 mm or PZ0	
	PE connection via female contact			
	S 4	0.5 - 0.8	SD 0.6 x 3.5 mm	
	ConCept modular frame, metal	0.5 - 0.55	SD 0.6 x 3.5 mm	
	PE terminal			
	HQ 5	0.5 - 0.55	SD 0.6 x 3.5 or 0.8 x 4 mm	
	HQ 7	0.5 - 0.55	SD 0.6 x 3.5 or 0.8 x 4 mm	
	Fastening screws	0.5 - 0.55	SD 0.6 x 3.5 mm or PZ0	
	Guide pin	0.5 - 0.55	SD 0.6 x 3.5 mm or PZ0	
	Guide bush	0.5 - 0.55	SD 0.6 x 3.5 mm or PZ0	
	Coding pins	0.5 - 0.55	SD 0.6 x 3.5 mm or PZ0	
	M 4	Contact screws		
		HSB	1.2 - 1.5	SD 0.6 x 3.5 or 0.8 x 4 mm or PZ1
PE connection via male contact				
S 4		0.5 - 0.8	SD 0.6 x 3.5 mm	
ConCept modular frame, metal		1.2 - 1.5	SD 0.6 x 3.5 mm	
PE terminal				
HA		1.2 - 1.5	SD 0.6 x 3.5 or 0.8 x 4 mm or PH1	
HE		1.2 - 1.5	SD 0.6 x 3.5 or 0.8 x 4 mm or PH1	
HEE		1.2 - 1.5	SD 0.6 x 3.5 or 0.8 x 4 mm or PH1	
HVE		1.2 - 1.5	SD 0.6 x 3.5 or 0.8 x 4 mm or PH1	
HD		1.2 - 1.5	SD 0.6 x 3.5 or 0.8 x 4 mm or PZ1	
HDD		1.2 - 1.5	SD 0.6 x 3.5 or 0.8 x 4 mm or PZ1	
S 6/6 (for signal contacts)		1.2 - 1.5	0.8 x 4 mm or PZ1	
ConCept modular frame, plastic		1.2 - 1.5	0.8 x 4 mm or PZ1	
M 5		PE terminal		
	HSB	2 - 2.5	SD 1 x 5.5 mm or PZ2	
	S 4/0 (Screw connection)	2 - 2.5	SD 1.2 x 6.5 mm or PH2	
	S 4/0 (Axial screw connection)	2 - 2.5	SD 0.8 x 4 mm or PZ 2	
	S 4/2	2 - 2.5	SD 1.2 x 6.5 mm or PH2	
	S 4/8	2 - 2.5	SD 1.2 x 6.5 mm or PH2	
	S 6/12	2 - 2.5	SD 0.8 x 4 mm or PZ 2	
	S 6/36	2 - 2.5	SD 1.2 x 6.5 mm or PH2	
	S 8/24	2 - 2.5	SD 1.2 x 6.5 mm or PH2	
	S 12/2	2 - 2.5	SD 1.2 x 6.5 mm or PH2	
	M 6	Power contacts		
S 4/0 (Screw connection)		1.2 (1.5 mm ²) / 2 (2.5 mm ²) / 3 (4-16 mm ²)	SD 0.8 x 4 mm	
S 4/2		1.2 (1.5 mm ²) / 2 (2.5 mm ²) / 3 (4-16 mm ²)	SD 0.8 x 4 mm	
S 4/8		1.2 (1.5 mm ²) / 2 (2.5 mm ²) / 3 (4-16 mm ²)	SD 0.8 x 4 mm	
M 7 x 0.75	Power contacts			
	S 4	1.1 - 1.7	SW 2	
	S 6/6 (+ PE)	6 - 8	SW 4	
M 8 x 0.75	Power contacts			
	S 6/12	1.1 - 1.7	SW 2	
	S 8/0 (+ PE)	6 (10-16 mm ²) - 7 (25 mm ²)	SW 4	
M10 x 1	Power contacts			
	S 4/0 (Axial connection)	2 - 3	SW 3	

Increasing the tightening torque does not improve the contact resistance. The stated torque settings offer optimal mechanical, thermal and electrical conditions. Exceeding the recommended values may even damage the conductor and terminal.