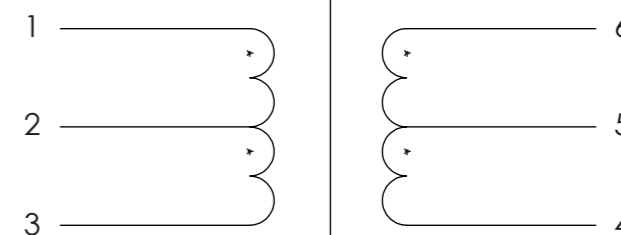
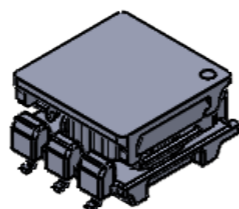
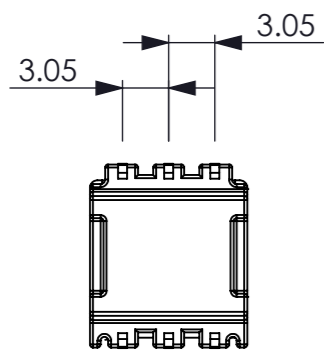
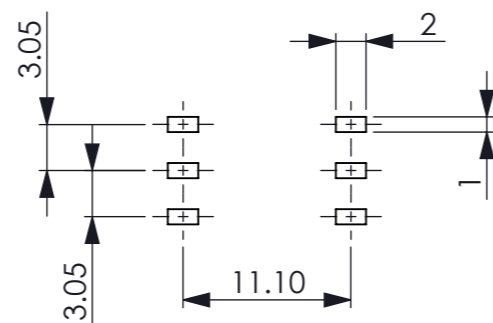
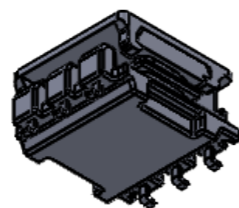
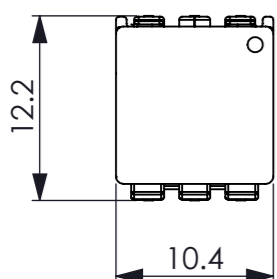
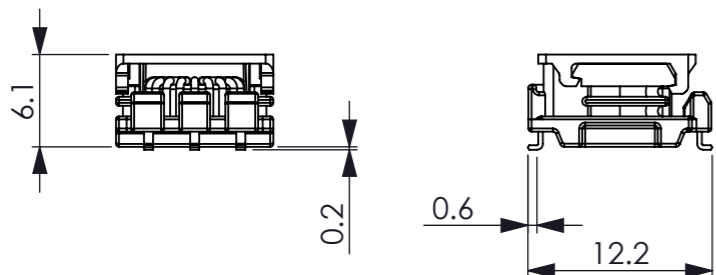


BOURNS WORLDWIDE CONTACTS:
 Asia-Pacific: Tel: +886-22562-4117 Fax: +886-2 2562-4116
 EMEA: Tel: +36 88 520 390 Fax: +36 520 211
 The Americas: Tel: +1-951 781 5500 Fax: +1 951 781-5700
 www.bourns.com



SCHEMATIC

Preliminary



ELECTRICAL SPECIFICATION

1. Primary Inductance (1V at 100kHz): L (1-3) = 250μH Min (Typical 430μH)
2. Leakage Inductance (1V at 100kHz): Le (1-3) Other Pins Shorted 0.5μH Max
3. DC Resistance

1 - 3	0.30Ω Max
6 - 4	0.30Ω Max

4. Turns Ratio:
(6 - 4) : (1 - 3) = 1.3:1
5. Hi-pot:
Primary to Secondary: 5kVAC, 1 minute

GENERAL INFORMATION

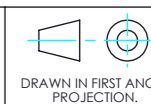
1. This part is compliant with RoHS and REACH
2. Operating Temperature: -40°C to +125°C Including Temperature Rise
3. Storage Temperature: -40°C to +125°C
4. PRI ET Constant: 11V-μs Min
5. Rated Current: 300mA AC
6. Creepage and Clearance Distance of Primary to Secondary: 8mm Min
7. Complies with IEC 60950-1, IEC62368-1, IEC60664-1, Reinforced Insulation for a Working Voltage of 400VAC, Pollution Degree 2, Up To 2000m Altitude
8. Withstands AEC-Q200

Title:
PUSH PULL TRANSFORMER 1.3:1

Customer approval:

Drawing Number:
B180063

Drawn:
TH
 Date:
 08/NOV/2018



BOURNS®

Customer part no:

Change Notice:

Checked:
CS
 Date:
 08/NOV/2018

Units: mm

Bourns part no:
HCT-SM-1.3-8-2



Revision:
X0

Approved:

Date:
 Page
 1 of 3

BOURNS WORLDWIDE CONTACTS:
 Asia-Pacific: Tel: +886-22562-4117 Fax: +886-2 2562-4116
 EMEA: Tel: +36 88 520 390 Fax: +36 520 211
 The Americas: Tel; +1-951 781 5500 Fax: +1 951 781-5700
 www.bourns.com

Preliminary

Title:	Customer approval:	Drawing Number:	Drawn:	Date:	 <small>DRAWN IN FIRST ANGLE PROJECTION.</small>
	Customer part no:	Change Notice:	Checked:	Date:	Units: mm
	Bourns part no:	Revision:	Approved:	Date:	Page 2 of 3

