

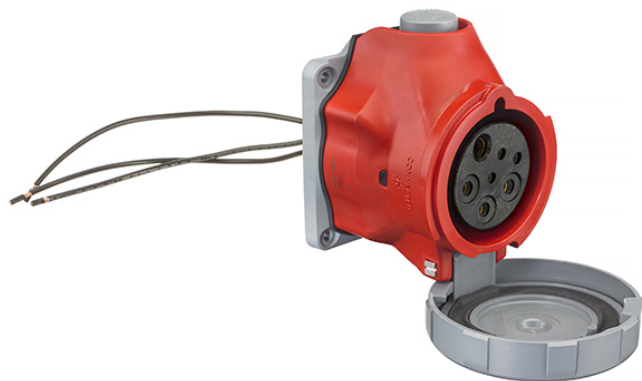
Switch-Rated IEC Style Pin and Sleeve
30A, 600V Max, 3-Pole 4-Wire Grounding

HUBBELL

Watertight Receptacle

Features

- Approved as a disconnecting means for motor circuits and branch circuits
- 3 early break control contacts rated a 3A 120V AC/24DC
- Unswitched feed-thru ground is first to mate and last to break
- Superior HP Rating and SCCR
- Type 4X, 12 & IP69K environmental rating



Ordering Information

Description	UPC	Catalog Number
Watertight IEC Pin and Sleeve Receptacle	783585679884	HBLS430R7WC

Listings

UL Listed, File E146032
CSA Certified File LR280C

Specifications

Housing	PBT
Locking Ring	PBT
Sealing Gasket	Solid Neoprene
Covers	PBT
Gaskets	Santoprene
Contact Carrier	Nylon

Performance

Electrical	
Current Interrupting	Certified for current interrupting at full rated current
Dielectric Voltage	Withstand 3000V AC
Max. Working Voltage	600V AC RMS
Mechanical	
Impact Resistance	Per CSA C22.2 No. 182.1 / UL1682
Product Identification	Identification and ratings are a permanent part of the device housing
Terminal Identification	Terminals identified in accordance with North American and IEC conventions
Environmental	
Flammability	V-0
Ingress Protection	TYPE 3R,3RX,4X and IP68,IP69K
Moisture Resistance	IEC 60309-1
Operating Temperatures	Maximum Continuous 75°C; Minimum - 40°C w/o impact

Accessories

Cover Assemblies

Dimensions in Inches (mm)

Hubbell Wiring Device-Kellems • Hubbell Incorporated (Delaware) • 40 Waterview Drive • Shelton, CT 06484

Phone (800) 288-6000 • Fax (800) 255-1031 • Specifications subject to change without notice.

