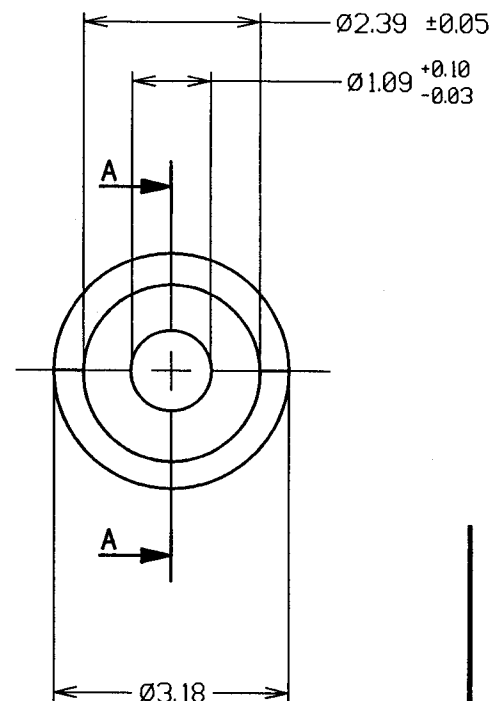


SECTION A-A



NOTES:

1. TO BE ANNEALED BEFORE PLATING.
2. RECOMMENDED PCB MOUNTING HOLE = $\varnothing 1.93-1.83\text{mm}$.
3. RECOMMENDED PCB THICKNESS = 1.6mm.
4. SWAGING TOOL = Z9028-00.

3	19.10.99	5007
2	03.07.89	1474
1	16.07.82	----

ISS.	DATE	C/NOTE
------	------	--------

APPROVED: *[Signature]*

CHECKED: *[Signature]*

DRAWN: J. KEIR

CUSTOMER REF.:

ASSEMBLY DRG:

HARWIN

THIS DRAWING AND ANY INFORMATION OR DESCRIPTIVE MATTER SET OUT HEREON ARE CONFIDENTIAL AND COPYRIGHT PROPERTY OF THE HARWIN GROUP AND MUST NOT BE DISCLOSED, LOANED, COPIED OR USED FOR MANUFACTURING, TENDERING OR FOR ANY OTHER PURPOSE WITHOUT THEIR WRITTEN PERMISSION.

TOLERANCES
 X. = ±1mm
 X.X = ±0.25mm
 X.XX = ±0.10mm
 X.XXX = ±0.01mm
 ANGLES = ±1°
 UNLESS STATED

MATERIAL:
 BRASS CZ124 1/2 HARD
 TO BS2874 (BRM1017)

FINISH: F0101 (TIN)

S/AREA: 139.98 mm²

TITLE:
 SOLDER POT

DRAWING NUMBER:
 H9028-01

SHT
 1
 OF
 1

HARWIN INC
 U.S.A.
 TEL: (812) 285 0055
 FAX: (812) 285 0056

HARWIN PLC
 UK.
 TEL: 01705 370451
 FAX: 01705 314590

HARWIN PTE
 SINGAPORE
 TEL: 65 7794909
 FAX: 65 7793868