

(1.00 mm) .0394"

GMI SERIES

LOW-PROFILE ONE-PIECE ARRAY

SPECIFICATIONS

For complete specifications and recommended PCB layouts see www.samtec.com?GMI

- Insulator Material:** Black LCP
- Contact Material:** Copper Alloy
- Plating:** Au over 50 μ" (1.27 μm) Ni
- Current Rating:** .89 A per pin (10 pins powered)
- Operating Temp Range:** Testing Now!
- RoHS Compliant:** Yes

PROCESSING

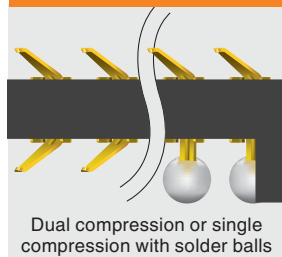
- Lead-Free Solderable:** Yes
- SMT Lead Coplanarity:** (0.05 mm) .002" (10-20)* (0.08 mm) .003" (30)* *(.004" stencil solution may be available; contact IPG@samtec.com)

RECOGNITIONS

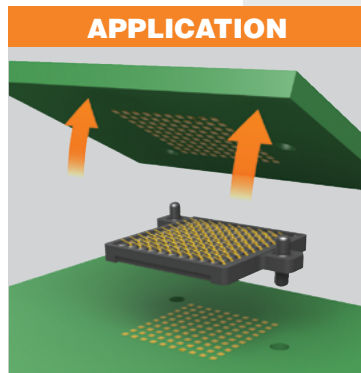
For complete scope of recognitions see www.samtec.com/quality



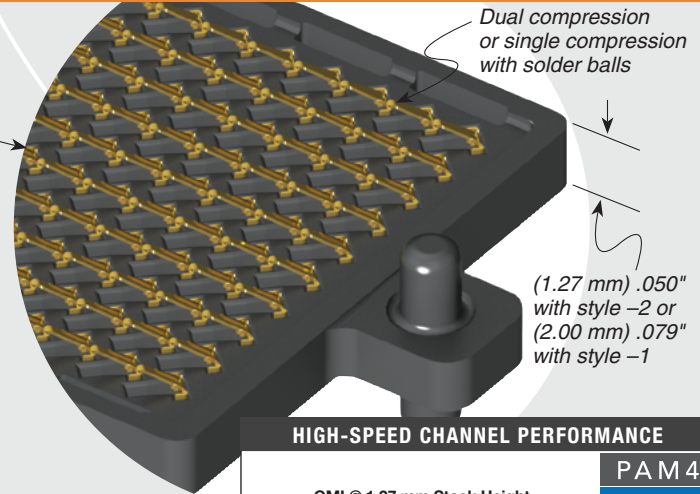
APPLICATION



Note: Some lengths, styles and options are non-standard, non-returnable.



Up to 400 pins



HIGH-SPEED CHANNEL PERFORMANCE

GMI @ 1.27 mm Stack Height
Rating based on Samtec reference channel. For full SI performance data visit Samtec.com or contact SIG@samtec.com

PAM 4

56 Gbps

GMI	POSITIONS PER ROW	STYLE	BOARD SPACING	PLATING	ROWS	SOLDER TYPE	OTHER OPTION
-10, -20, -30, -40	-1 = Single Compression with Solder Ball -2 = Dual Compression	-1.27 = (1.27 mm) .050" Board space (Style -2 only) -2.00 = (2.00 mm) .079" Board space (Style -1 only)	-G = 10 μ" (0.25 μm) Gold in contact area	-10 = Ten Rows	(Style -1 only) -2 = Lead-Free 96.5% Sn/ 3% Ag/5% Cu	(Style -1 only) -P = Pick & Place Pad	

-20, -30 POSITIONS PRELIMINARY

10 X 10 DUAL COMPRESSION (STYLE -2)

(No. of positions x (1.00) .03937) + (6.80) .268

(12.00) .472

(9.00) .354

(1.00) .03937

(1.00) .03937

(1.27) .050

(0.30) .012 TYP BOTH SIDES

(No. of positions x (1.00) .03937) + (4.00) .157

20 X 10 SINGLE COMPRESSION WITH SOLDER BALLS (STYLE -1)

(0.90) .035 DIA

(1.10) .043 DIA

(1.10) .043 DIA

(1.42) .056

(2.00) .079

Due to technical progress, all designs, specifications and components are subject to change without notice.

WWW.SAMTEC.COM

All parts within this catalog are built to Samtec's specifications. Customer specific requirements must be approved by Samtec and identified in a Samtec customer-specific drawing to apply.