



The following document contains information on Cypress products. Although the document is marked with the name “Spansion” and “Fujitsu”, the company that originally developed the specification, Cypress will continue to offer these products to new and existing customers.

Continuity of Specifications

There is no change to this document as a result of offering the device as a Cypress product. Any changes that have been made are the result of normal document improvements and are noted in the document history page, where supported. Future revisions will occur when appropriate, and changes will be noted in a document history page.

Continuity of Ordering Part Numbers

Cypress continues to support existing part numbers. To order these products, please use only the Ordering Part Numbers listed in this document.

Worldwide Sales and Design Support

We look forward to partnering with you to provide solutions that will help make your systems successful. Cypress maintains a worldwide network of offices, solution centers, manufacturer’s representatives, and distributors. To find the office closest to you, visit us at [Cypress Locations](#).

About Cypress

Cypress (NASDAQ: CY) delivers high-performance, high-quality solutions at the heart of today’s most advanced embedded systems, from automotive, industrial and networking platforms to highly interactive consumer and mobile devices. With a broad, differentiated product portfolio that includes NOR flash memories, F-RAM™ and SRAM, Traveo™ microcontrollers, the industry’s only PSoC® programmable system-on-chip solutions, analog and PMIC Power Management ICs, CapSense® capacitive touch-sensing controllers, and Wireless BLE Bluetooth® Low-Energy and USB connectivity solutions, Cypress is committed to providing its customers worldwide with consistent innovation, best-in-class support and exceptional system value.

FM0+ FAMILY

32-BIT MICROCONTROLLER
FM0+ family Application Note

IEC60730 CLASS B
SELF-TEST LIBRARY
APPLICATION NOTE



ARM and Cortex-M0+ are the trademarks of ARM Limited in the EU and other countries.





FM0+ IEC60730 CLASS B SELF-TEST LIBRARY
Revision History

Revision History

Version	Date	Updated by	Approved by	Modifications
0.1.0	2014/02/07	SPANSION INC.		New Creation
1.1.0	2015/07/20	MIWA		Support S6E1B8 and S6E1C3

This manual contains 67 pages.

Specifications are subject to change without notice. For further information please contact each office.

All Rights Reserved.

This document states the current technical specifications regarding the Spansion product(s) described herein. Each product described herein may be designated as Advance Information, Preliminary, or Full Production.

Copyright © Spansion All rights reserved.



Table of Contents

Revision History.....	0
Target products.....	4
1 Introduction.....	5
1.1 About Document.....	5
1.2 About IEC60730	5
1.3 About FM0+ Family MCU	5
1.4 About FM0+ IEC60730 STL Demo Project	7
2 IEC60730 Class B Requirement	7
3 IEC60730 Class B STL Overview	10
4 IEC60730 Class B STL API	12
4.1 CPU Register Test	12
4.1.1 Test Description.....	13
4.1.2 API Definition.....	14
4.2 CPU PC Test.....	15
4.2.1 Test Description.....	15
4.2.2 API Definition.....	16
4.3 Interrupt Test.....	17
4.3.1 Test Description.....	17
4.3.2 API Definition.....	18
4.4 Clock Test	20
4.4.1 Test Description.....	20
4.4.2 API Definition.....	27
4.5 Invariable Memory Test.....	31
4.5.1 Test Description.....	32
4.5.2 API Definition.....	37
4.6 Variable Memory Test	39
4.6.1 Test Description.....	39
4.6.2 API Definition.....	40
4.7 IO Test.....	41
4.7.1 Test Description.....	41
4.7.2 API Definition.....	42
4.8 AD Test	44
4.8.1 Test Description.....	44
4.8.2 API Definition.....	45
5 Example project.....	46



5.1 User Configuration.....	46
5.1.1 The definition “IEC60730_FLASHTEST_USE_CRC16”.....	46
5.1.2 The definition “IEC60730_CLKTEST_USE_CSV”.....	46
5.1.3 Define the corresponding board.....	46
5.2 Project Structure	46
5.2.1 Startup Self-Test.....	46
5.2.2 Periodic Test Initialization.....	48
5.2.3 Periodic Test.....	48
5.3 Sample Code	49
5.3.1 Startup File	49
5.3.2 Main File.....	50
6 STL API Performance	56
7 Reference Documents.....	58
8 Appendix.....	59
8.1 CRC code making method	59
8.1.1 Start of the Command-Line	59
8.1.2 Input the command.....	59
8.1.3 Setting of build messages to display in the message window.....	61
8.1.4 Setting of the Linker configuration file.....	62
8.1.5 Making CRC code	63
9 Content of Table and Figure	64



Target products

This application note is described about below products.

Series	Product Number (not included Package suffix)
S6E1A1	S6E1A11B0A/ S6E1A12B0A/ S6E1A11C0A/ S6E1A12C0A
S6E1B8	S6E1B84EH/S6E1B85EH/S6E1B86EH/S6E1B84FH/S6E1B85FH/ S6E1B86FH/S6E1B84GH/S6E1B85GH/S6E1B86GH/
S6E1C3	S6E1C31A0/S6E1C32A0/S6E1C31B0/S6E1C32B0/S6E1C31C0/ S6E1C32C0/S6E1C31D0/S6E1C32D0

1 Introduction

1.1 About Document

This application notes describes how to use and implement the library functions provided. It will first show the requirement of IEC60730 Class B, and then explain how it can be implemented. At last an example is given to show how to integrate test functions into a real system.

1.2 About IEC60730

The International Electrotechnical Commission (IEC) is a worldwide organization for standardization comprising all national electrotechnical committees (IEC National Committees). International Standard IEC60730-1 has been prepared by IEC technical committee for automatic controls in household use. From 2007 onwards, home appliances have to comply with Standard IEC60730 to make system more safety.

The Annex H of IEC60730 applies to electronic controls and embedded systems implemented by both hardware and software. Therefore the system using a microcontroller is typically the case in modern appliances. Especially, Annex H of IEC60730 explains detailed test and diagnostic methods for microcontrollers.

In Annex H, the software-related Standard items are classified by Class A, B or C.

Class A: control functions which are not intended to be relied upon for the safety of the equipment, such as humidity controls, lighting controls and timers.

Class B: software that includes code intended to prevent hazards if a fault, other than a software fault, occurs in the appliance, such as thermal cut-outs and door locks for laundry equipment.

Class C: software that includes code intended to prevent hazards without the use of other protective devices, such as thermal cut-outs for closed water heater systems.

1.3 About FM0+ Family MCU

FM0+ family MCU is 32-bit general purpose MCU that features the industry's leading-edge ARM Cortex-M0+ CPU and integrates highly reliable and high-speed secure embedded flash technology. With a maximum CPU frequency of 40MHz, a high

speed flash memory, FM0+ covers the high end of the line-up. The wide operation supply voltage range (2.7~ 5.5V) improves the signal to noise ratio, results in a robust design. All products are based on the same architecture (software compatible), use the same peripherals and are pin compatible in most cases.

It includes a host of robust peripheral features, including motor control timers (MFT), base timer (can be configured to PWM, PPG, Reload, PWC timer), ADCs, on-chip memory (up to 560K Flash, up to 64K SRAM) and a wide range of communication interfaces (I2C, UART, CSIO, LIN, CAN and so on).

The size of on-chip memory can be configured according to different part number and the package is available in LQFP and QFN, shown in Table 1-1.

Product	Flash	SRAM	Package
S6E1A11B0A	MAINFLASH: 56KB	6kB	LQFP-32 QFN-32
S6E1A12B0A	MAINFLASH: 88KB	6kB	
S6E1A11C0A	MAINFLASH: 56KB	6kB	LQFP-48 QFN-48 LQFP-52
S6E1A12C0A	MAINFLASH: 88KB	6kB	
S6E1B84EH	MAINFLASH: 256KB + 48KB	32KB	LQFP: FPT-80P-M21
S6E1B85EH	MAINFLASH: 384KB + 48KB	48KB	
S6E1B86EH	MAINFLASH: 512KB + 48KB	64KB	
S6E1B84FH	MAINFLASH: 256KB + 48KB	32KB	LQFP: FPT-100P-M20
S6E1B85FH	MAINFLASH: 384KB + 48KB	48KB	
S6E1B86FH	MAINFLASH: 512KB + 48KB	64KB	
S6E1B84GH	MAINFLASH: 256KB + 48KB	32KB	LQFP: FPT-120P-M21
S6E1B85GH	MAINFLASH: 384KB + 48KB	48KB	
S6E1B86GH	MAINFLASH: 512KB + 48KB	64KB	
S6E1C31A0	MAINFLASH: 64KB	12KB	TBD
S6E1C32A0	MAINFLASH: 128KB	16KB	
S6E1C31B0	MAINFLASH: 64KB	12KB	LQFP: FPT-32P-M30
S6E1C32B0	MAINFLASH: 128KB	16KB	



S6E1C31C0	MAINFLASH: 64KB	12KB	LQFP: FPT-48P-M49 QFN: LCC-48P-M74
S6E1C32C0	MAINFLASH: 128KB	16KB	
S6E1C31D0	MAINFLASH: 64KB	12KB	LQFP: FPT-64P-M38 QFN: LCC-64P-M25
S6E1C32D0	MAINFLASH: 128KB	16KB	

Table 1-1: FM0+ Product List

1.4 About FM0+ IEC60730 STL Demo Project

This is a sample project to demonstrate how to use FM0+ IEC60730 Self-Test Library. It is developed in IAR EWARM Workbench V7.10 and Keil μ Vision V5.10 IDE, and evaluated on SK-FM0P-48LQFP-9AF160K V1.0.0, SK-FM0-100L-S6E1B8 V10 and SK-FM064LS6E1C3 V10 start kit respectively.

Notes:

1. If the different version of IAR EWARM Workbench V7.10 and Keil μ Vision V5.10 are used to open this example project, MCU type information in project setting may lose, please check it.
2. If the former version of IAR EWARM Workbench V7.10 is used to open this example project, MCU type, pre-included files (in preprocess table of C/C++ compiler), icf file (in link table of debug option), flash loader file (down table of debugger option) may lose, please check these settings.
3. If the former version of Keil μ Vision V5.10 is used to open this example project, MCU type, pre-included files (in C/C++ table of project option), debug setting (in debug table of project setting) may lose, please check these settings.

2 IEC60730 Class B Requirement

The specification defined in IEC60730 requires controls with functions classified as software class B or C shall use measures to avoid and control software-related faults/errors in safety-related data and safety-related segments of the software. This means the software must use test method to detect faults internal and external of the microcontroller.

FM0+ IEC60730 self-test library (STL) focuses on software Class B requirement for S6E1A1/S6E1B8/S6E1C3 series MCU, which covers most IEC60730 requirements

listed in the standard. For Class B controllers, below table lists elements that must be tested, method to be adapted and definitions to be implemented as summary of Annex H table H.11.12.7.

Component	Fault/Error	Method used in STL	Definitions	In STL
1. CPU				
1.1 Register	Stuck at	static memory test	H. 2.19.6	YES
1.2 Program counter	Stuck at	logical monitoring of the program sequence	H.2.18.10.2	YES
2. Interrupt	No interrupt or too frequency interrupt	Time-slot monitoring	H.2.18.10.4	YES
3. Clock	Wrong frequency	Frequency monitor	H.2.18.10.1	YES
4. Memory				
4.1. Invariable memory	All single bit faults	Redundancy check	H.2.19.3.2	YES
4.2. Variable memory	DC fault	static memory test	H.2.19.6	YES
4.3. Address ^[1]	Stuck at	Redundancy check	-	YES
5. Internal data path ^[2]	Stuck at	-	-	NO
6.External communication				
6.1 Data ^[3]	Hamming distance 3	-	-	NO
6.3 Timing	Wrong point in time	-	-	NO
7. Input/output periphery				
7.1 Digital I/O	Function error	Output verification	H.2.18.12	YES
7.2 A/D	Function error	Input comparison	H.2.18.8	YES

Table 2-1: FM0+ IEC60730 STL Test Items

Notes:

1. **The address test can be partly covered by test method of invariable and variable memory test. E.g. the error that two cells are mapped to a same address can be identified when doing invariable memory test with CRC test.**
2. **Internal data path is only tested when using external memory.**
3. **The external communication test is not involved in this STL. But external communication data can be tested with similar method of invariable memory test.**

3 IEC60730 Class B STL Overview

As shown in following figure, the STL block diagram includes CPU, Interrupt, Clock, Memory, and Input/output periphery module. It shows file structure and software APIs in the STL. The STL is coded by mixed C and assembly language.

FM0P IEC60730 STL should be compatible with ARM, IAR compiler. So STL supplies two kinds of CPU test.s and ram test.s files according to different compilers.

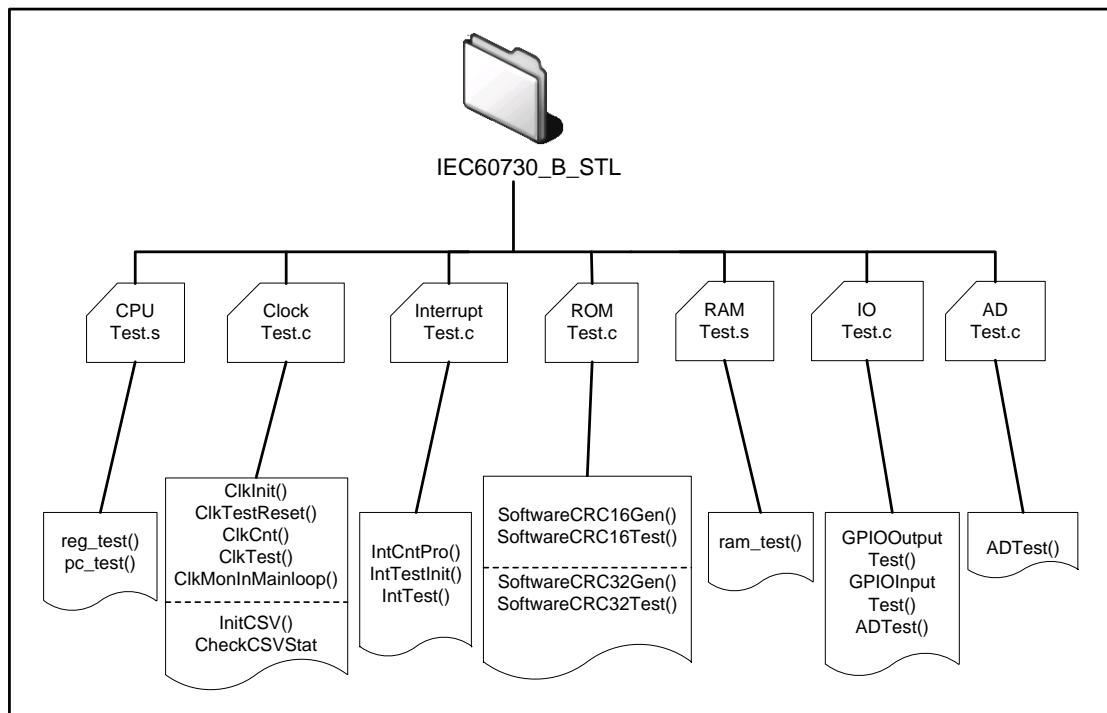


Figure 3-1: FM0+ IEC60730 Class B STL Block Diagram

The STL consists of several independent function modules, which have to be executed once or cyclically as required by the application.

The test function implemented once is called Power-On Self-Test (POST), which should be implemented in system initialization, this test is always complete but destructive(need Initialize), which means it covers full test area but the data is not restored after executing test. PC, register, ROM/RAM, IO, AD test are all POST.

The test function implemented cyclically is called Build-In Self-Test (BIST), which should be implemented in main loop or timer interrupt service routine in a certain interval, this test will not change test data and act as a monitor when program is running. Interrupt and clock are BIST.

Notes:

1. The library should be used as explained, if any part is changed, a new validation is needed for these parts.
2. This library is usable, as-is, for all Cortex-M0+ MCU, including those not especially mentioned in this application notes.
3. The prefix of file and function name is omitted for easy description.
4. The STL provides two types of assembly files for CPU and RAM test for IAR and KEIL IDE.
5. User has alternative test method in clock and Flash test.

4 IEC60730 Class B STL API

4.1 CPU Register Test

ARM Cortex-M0+ has 19 core registers, which can be read and written. These registers below need to be tested.

Register Name	Bits tested
R0-R12	[31:0]
R13 (SP_main, SP_process) ^[1]	[31:4]
R14 (LR)	[31:0]
APSR ^[2]	[31:28]
PRIMASK ^[3]	0

Table 4-1: Cotex-M0+ Register List

Notes:

1. ARM Cortex-M0+ kernel has two stack pointers: main stack pointer (MSP) and process stack pointer (PSP). Handler mode uses MSP and process mode uses MSP or PSP. R13 indicates current SP.
2. Only high 4 bits of APSR is valid.
3. Only bit 0 of PRIMASK is valid.

4.1.1 Test Description

As shown at table H.11.12.7, registers must be checked for “stuck-at error”, a simple checker board method is used to implement register test, which is an effective method to detect stuck-at error.

This test should be called at startup file when system resets in Privileged mode, as kernel registers needs to be accessed. This test does not disable interrupts during the register test. It is the responsibility of the application to disable interrupts when this function is called to ensure that the register test is not interrupted.

Assembly is used to implement register test due to access to registers directly. And as it is highly critical, it is designed that once register test error is detected, program will run into an infinite loop.

The flow chart to test 1 register is shown as following figure.

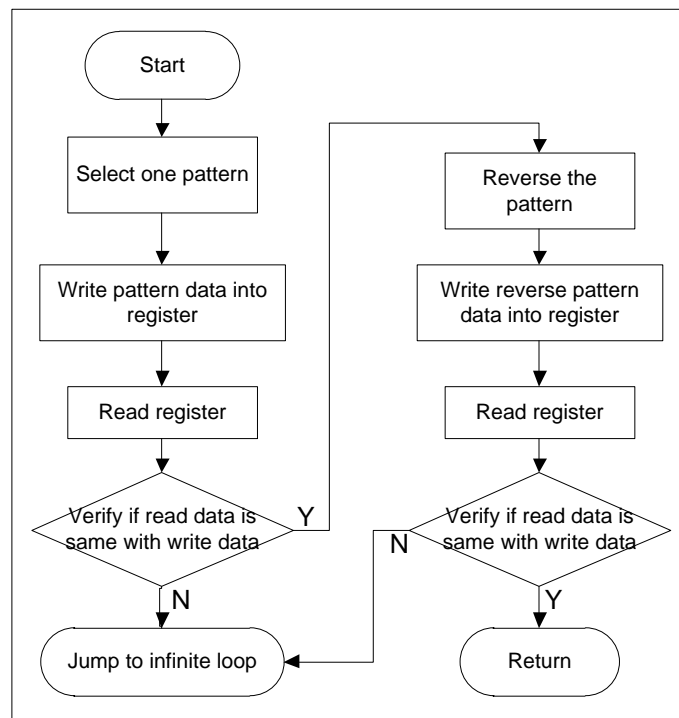


Figure 4-1: Test 1 Register

4.1.2 API Definition

Name	iec60730_reg_test
Parameter	None
Return	None

Description:

This function tests all registers including R0-R12 (low: R0-R7, high: R8-R12) special registers (SP, LR, APSR, PRIMASK) with checker board method. This function should be called at reset handler.

4.2 CPU PC Test

4.2.1 Test Description

As shown at table H.11.12.7, PC must be checked for “stuck-at error”. PC test makes use of 8 subroutines and validates if PC value gotten from each subroutines is same with pre-define value.

This test should be called at startup file when system resets in Privileged mode. This test does not disable interrupts during the register test. It is the responsibility of the application to disable interrupts when this function is called to ensure that the register test is not interrupted.

Assembly is used to implement PC test due to access to PC register directly. As it is highly critical, it is designed that once PC test error is detected, program will run into an infinite loop.

The PC test flow is shown as following figure.

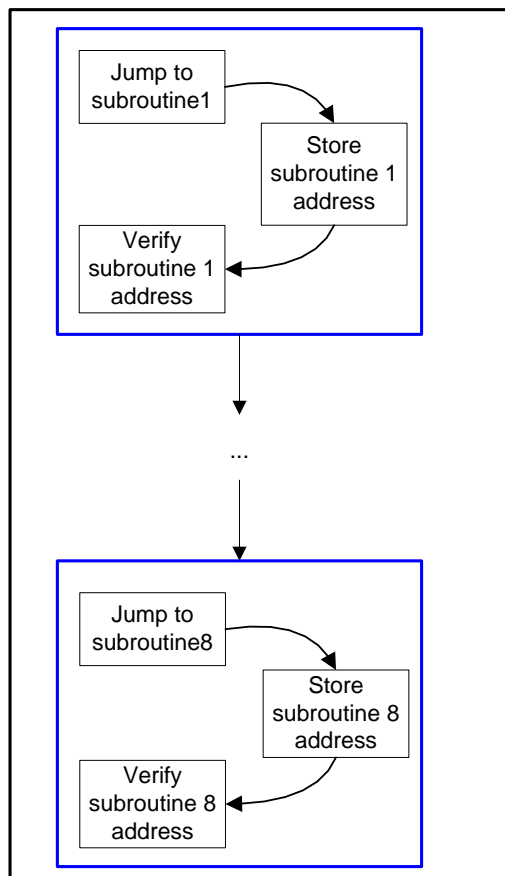


Figure 4-2: PC Test Flow Chart

4.2.2 API Definition

Name	iec60730_pc_test
Parameter	None
Return	None

Description:

This function jumps to subroutines at different areas and gets the subroutine address, then verifies whether address gotten is correct. It should be called at reset handler.

4.3 Interrupt Test

4.3.1 Test Description

To meet Class B requirement, interrupt must be checked for “incorrect frequency”. This test is a task which is highly system dependent and therefore the STL can only contribute the wrap up handle, which checks that a number of specific interrupts occurred at least and at most a predefined number of times. It is assumed that **IEC60730_IntTest** (interrupt test function) is called in specified intervals, e.g. triggered by a timer or line frequency interrupt. Each specific interrupt handler which is to be supervised, must decrement a dedicated global variable (**Freq**) by calling **IEC60730_IntCnt**, **IEC60730_IntTest** compares that variable to predefined upper and lower bounds, sets it to its preset value and returns an error, if the limits are exceeded.

For example, measure if timer 0-3 interrupts happen 5 times in 10 second, assume 10 second timing can be gotten by a reload timer and set the range of interrupt frequency of timer 0-3 at [3, 7].

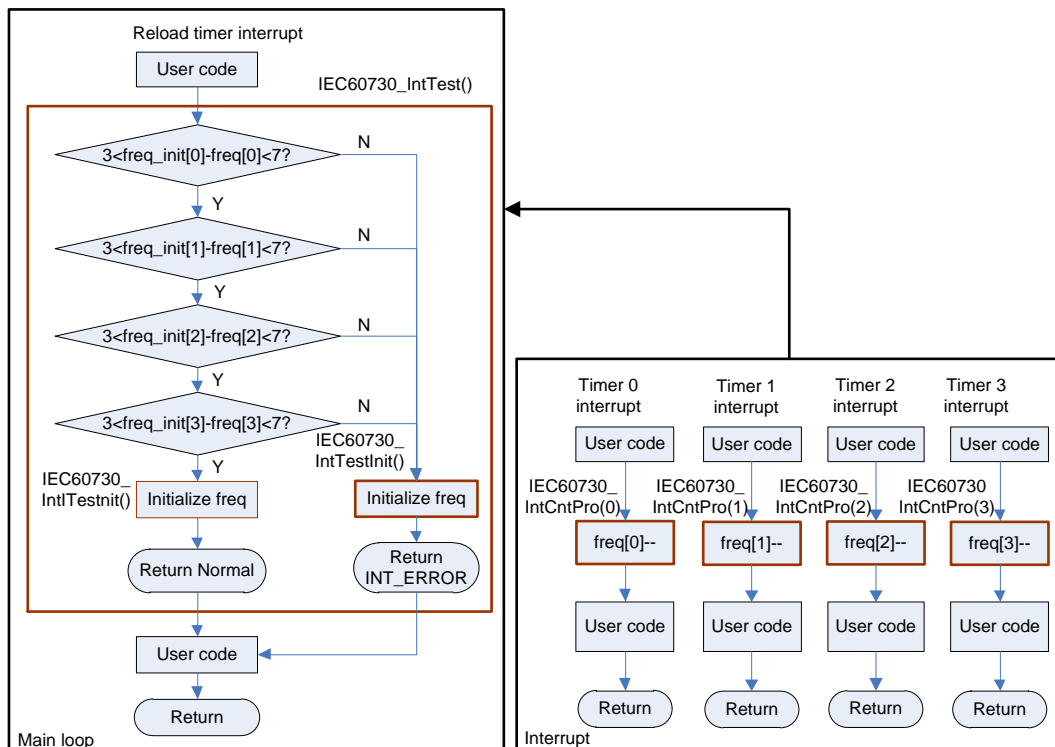


Figure 4-3: Interrupt Test Block Diagram

The interrupt test is independent from user application. User just needs to add the interrupt test API into his interrupt which he wants to test.

4.3.2 API Definition

Name	IEC60730_IntTestInit
Parameter	<p>pFreq: pointer to frequency counters</p> <p>pFreqLower: pointer to lower frequencies</p> <p>pFreqUpper: pointer to upper frequencies</p> <p>pFreqInitial: pointer to frequency initial value</p> <p>ArraySize: pointer to interrupt num</p>
Return	None

Description:

This function initializes `str_int_test_par_t` structure for interrupt test, which includes pre-defined frequency ranges and frequency initial values. It should be called at system initialization, before interrupt test starts.

Name	IEC60730_IntCntPro
Parameter	IntNum: interrupt number
Return	None

Description:

This function decreases frequency counter of the interrupt specified by the interrupt number, and should be called in the interrupt which to be supervised.

Name	IEC60730_IntTest
Parameter	None
Return	0: IEC60730_TEST_NORMAL 1: IEC60730_TEST_FUNC_ERROR

Description:

This is interrupt test main function, which verifies whether the interrupts are handled in time. It should be called at a timer interrupt or main loop in a certain interval.

4.4 Clock Test

4.4.1 Test Description

To meet Class B requirement, CPU clock must be checked for “wrong frequency”. This requires a second independent clock as a standard clock for clock test. This library provides two ways to implement clock test. First, FM0+ MCU has integrated a watch counter which can be sourced by an external sub clock (32.768kHz oscillator). The sub clock can be treated as the standard clock. For the second, FM0+ MCU has integrated a **Clock Supervisor** (in following called **CSV**), which includes the functions: Clock failure detection and Anomalous frequency detection. The CSV can also be used for clock test.

User should enable the definition “IEC60730_CLKTEST_USE_CSV” in IEC60730_user.h file if he wants to use CSV to perform clock test.

■ Use watch counter to do clock test

This test takes watch counter as standard clock, and tests whether the frequency of CPU clock is within acceptable bound by verifying a time tick which is counted in a timer interrupt. The source clock of timer interrupt should be same with CPU clock. The case that CPU clock is sourced by sub clock can not be tested, as 32.768kHz oscillator is assumed accurate.

These test functions are implemented: **IEC60730_ClkCnt**, **IEC60730_ClkTest**, and **IEC60730_ClkMonMainloop**, shown as following figure. The timer interrupt occurrence frequency is monitored by watch counter and the watch counter interrupt occurrence is checked in main loop.

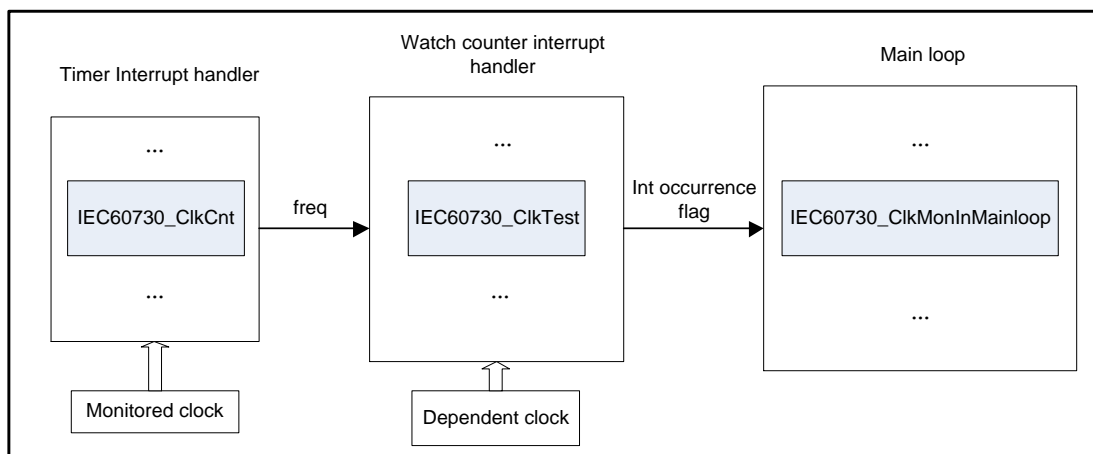


Figure 4-4: Clock Test Block Diagram

The API **IEC60730_ClkCnt** is used to count a global variable “freq”, which is called in a timer interrupt handler, the source clock of timer should be same with CPU clock. The flowchart of **IEC60730_ClkCnt** is shown as following figure.

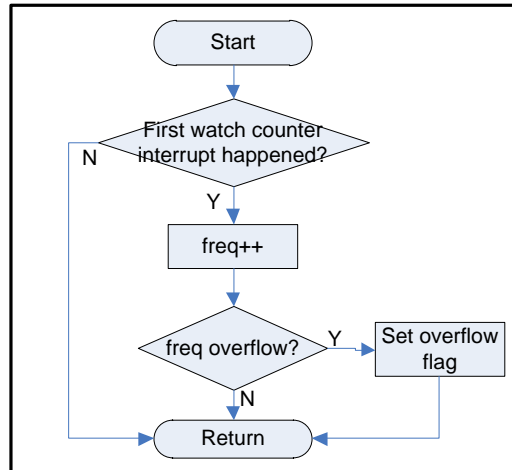


Figure 4-5: Clock Counter Flowchart

Notes:

1. The global variable “freq” starts to count until first watch counter interrupt occurred, because it is a limitation of watch counter in FM0+ MCU that the first count cycle is 2 times of normal cycle. So the first watch counter interrupt should be ignored.

API **IEC60730_ClkTest** is to check whether “freq” is in pre-defined range, which is called in watch counter interrupt handler.

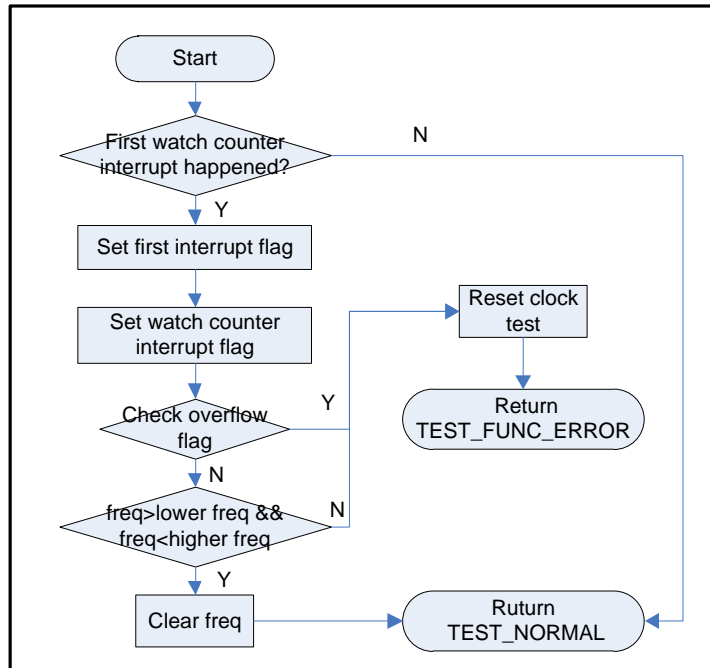


Figure 4-6: Clock Test Flowchart

API **IEC60730_ClkMonInMainloop** guarantees the occurrence of watch counter interrupt in a certain period, this period depends on the threshold value set by user according to a real application. The flowchart of **IEC60730_ClkMonMainInloop** is shown as following figure.

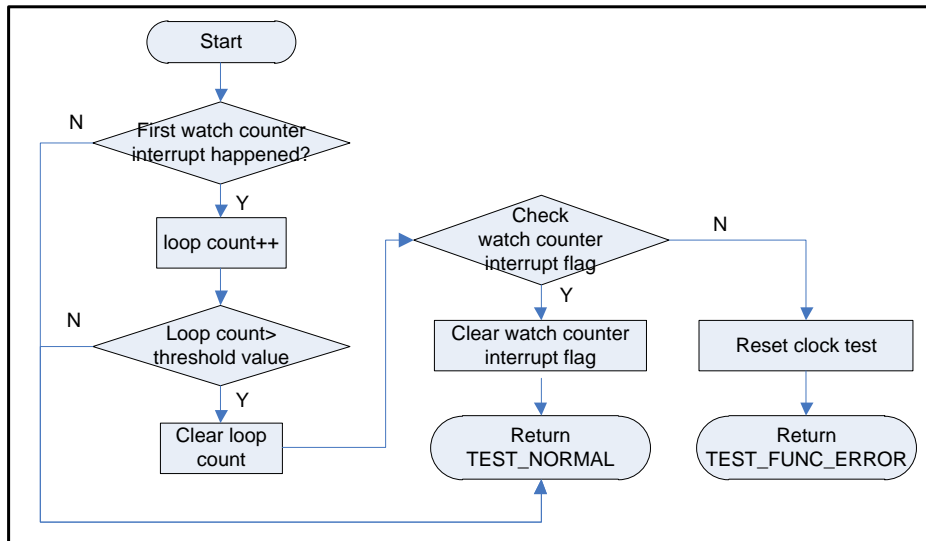


Figure 4-7: Clock Main Loop Monitor Flowchart

■ Use CSV to do clock test

The CSV has two types of functions: **Clock failure detection (CSV: Clock failure detection by clock Super Visor)** and **Anomalous frequency detection (FCS: anomalous Frequency detection by Clock Super visor)**.

The clock failure detection monitors the main and sub clocks. If a rising edge of the monitored clock is not detected within the specified period, this function determines that the oscillator has failed, and outputs a system reset request. The main clock is monitored with the high-speed CR clock, and the sub clock is monitored with the low-speed CR clock. When a rising edge is not detected within 32 clocks of high-speed CR for the main clock, or within 32 clocks of low-speed CR for the sub clock, this function determines that the oscillator has failed. Figure 4-8 shows the block diagram of the clock failure detection.

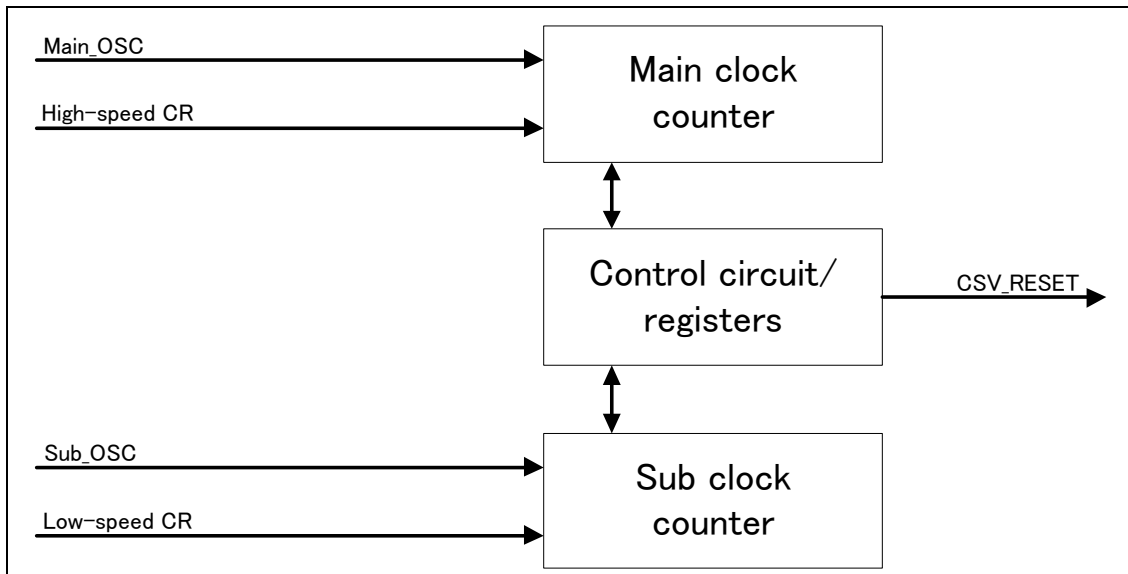


Figure 4-8: Clock Failure Detection Block Diagram

The Anomalous frequency detection monitors the main clock. Within the specified period between an edge and the next edge of the divided clock of high-speed CR, this function counts up the internal counter using the main clock. If the count value reaches out of the set window range, the function determines that the main clock frequency is anomalous, and outputs an interrupt request or a system reset request to the CPU.

Figure 4-9 shows the block diagram of the anomalous frequency detection.

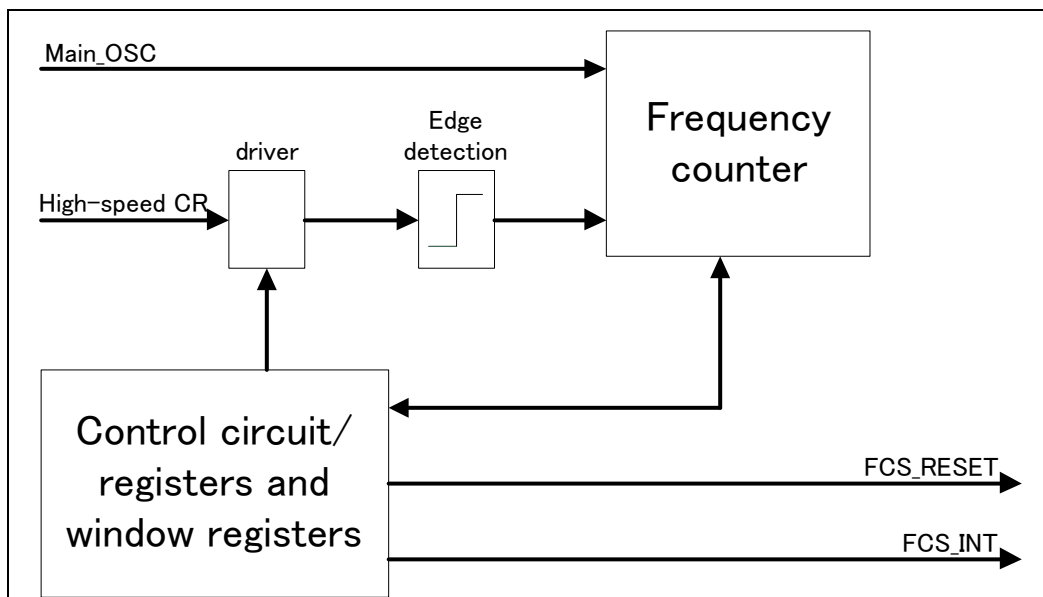


Figure 4-9: Anomalous Frequency Detection Block Diagram

Two test functions are implemented:

IEC60730_InitCSV and IEC60730_CheckCSVStat.

The API **IEC60730_InitCSV** provides a selection for user to disable/enable Clock failure detection and Anomalous frequency detection functions. It should be called before system clock initialization. Figure 4-10 shows the flow chart of it.

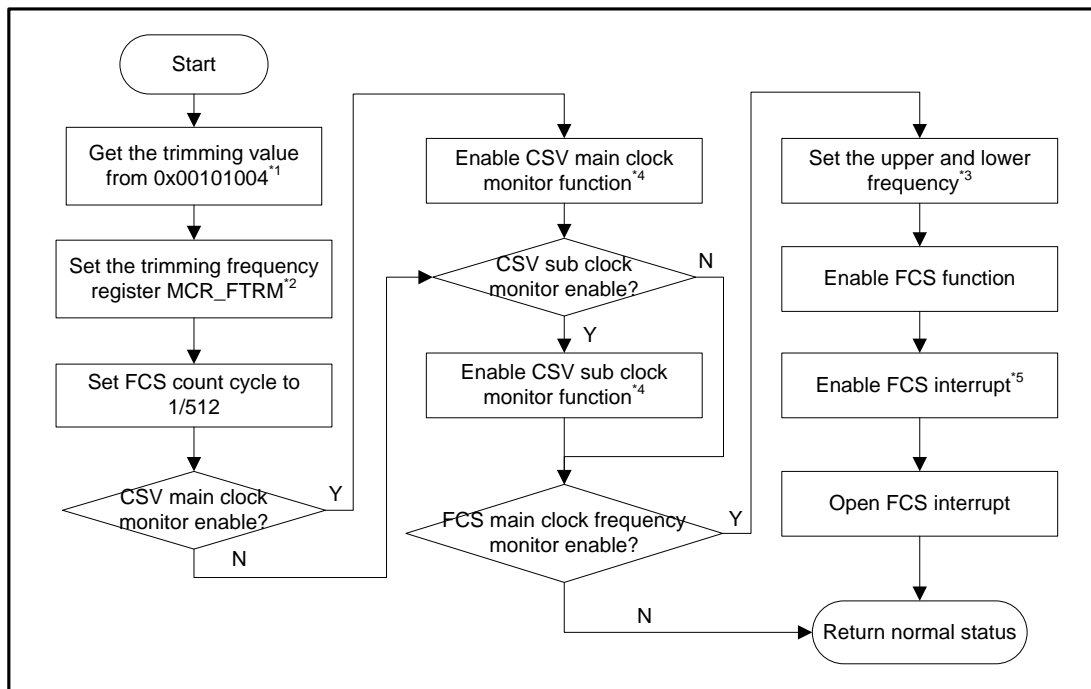


Figure 4-10: IEC60730_InitCSV Flow Chart

Notes:

- 1) For S6E1A1 series and S6E1C3 series, the default high-speed CR trimming value is stored in the address 0x00100004 when leaving factory. For S6E1B8 series the address 0x00102000 stored the CR trimming data.
- 2) If the CR trimming value in the address 0x00100004 or 0x00102000 is destroyed, a typical value must be written into the trimming register MCR_FTRM.
- 3) When setting the expected accuracy of main clock, high-speed CR frequency should also be considered. Consider the high-speed CR oscillator precision is 4M±3% (As found in data sheet, for S6E1A1, the high-speed CR oscillator precision is 4M±2% in

25°C, so 4M±3% is used for a little margin). The base upper and lower count can be calculated by following formula.

base lower count (operating in +3.0%) = $1/[(\text{freq}/512^*) \times (1 + 0.03)] \times \text{freq} = 512/1.03 = 497$

base upper count (operating in -3.0%) = $1/[(\text{freq}/512^*) \times (1 - 0.03)] \times \text{freq} = 512/0.97 = 528$

If 5% accuracy is set,

lower count = $497 \times 0.95 = 472$

upper count = $528 \times 1.05 = 554$

- 4) After enable CSV function, a reset will occurred when a rising edge is not detected within 32 clocks of high-speed CR for the main clock, or within 32 clocks of low-speed CR for the sub clock.
- 5) After enable FCS function and FCS interrupt, a FCS interrupt will occur if main clock frequency is detected not in the setting range, but FCS reset is set not to output.

The API **IEC60730_CheckCSVStat** is used to check if Clock failure detection or Anomalous frequency detection happens. This API should be called before **IEC60730_InitCSV**. Figure 4-11 shows the flow chart of it.

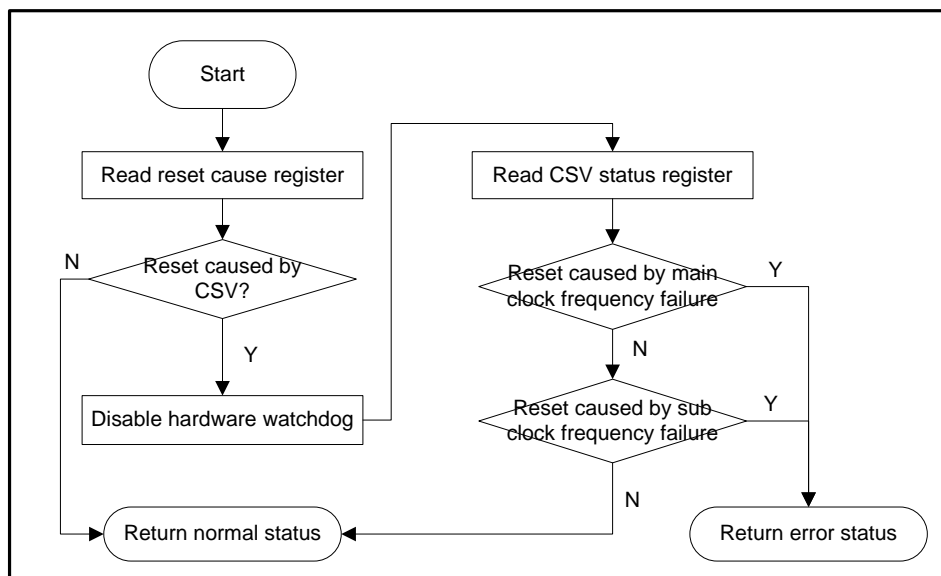


Figure 4-11: IEC60730_CheckCSVStat Flow Chart

4.4.2 API Definition

■ Use watch counter to do clock test

Name	IEC60730_ClkCnt
Parameter	None
Return	None

Description:

This API is used to count clock frequency, which should be called in the timer interrupt.

Name	IEC60730_ClkTest
Parameter	None
Return	0: IEC60730_TEST_NORMAL 1: IEC60730_TEST_FUNC_ERROR

Description:

This API tests if the frequency of CPU clock is within acceptable bound by verifying a time tick which is counted in a timer interrupt. It should be called in the watch counter interrupt, which is sourced by an independent 32.768kHz clock (sub-clock of FM4 MCU).

Name	IEC60730_ClkMonInMainloop
Parameter	None
Return	0: IEC60730_TEST_NORMAL 1: IEC60730_TEST_FUNC_ERROR



Description:

This API is used to monitor watch counter interrupt occurrence, it should be called in main loop.

Name	IEC60730_ClkTestReset
Parameter	None
Return	None

Description:

This API resets interrupt test variables.

Name	IEC60730_ClkInit
Parameter	<p>FreqLower: indicate timer interrupt minimum occur frequency</p> <p>FreqUpper: indicate timer interrupt maximum occur frequency</p> <p>ClkTestThreshold: indicate threshold value</p>
Return	None

Description:

This API should be called at system initialization before clock test starts.

The parameter FreqLower and FreqUpper should be set according to actual example. For example, if user uses 1s interval for watch counter to monitor a 50ms timer interrupt. The value FreqLower =18, FreqUpper =22 can be set as bound of timer clock frequency, the standard of which is 20.

It is important to estimate threshold value, which should be at least 1s/mainloop execution time.

■ **Use CSV to do clock test**

Name	IEC60730_CheckCSVStat
Parameter	pRegRSTStat: get the data from reset cause register
Return	None

Description:

This API is used to check if Clock failure detection or anomalous frequency detection happens. The parameter “pRegRSTStat” store the address of data read from reset cause register. This API only handles the reset caused by CSV, otherwise it will return normal status. It should be called before IEC60730_InitCSV.

Name	IEC60730_InitCSV
Parameter	<p>CSV_MCLKMonEn: 0: disable CSV main clock monitor 1:enable CSV main clock monitor</p> <p>CSV_SCLKMonEn: 0: disable CSV sub clock monitor 1:enable CSV sub clock monitor</p> <p>FCS_MONInfo: a fcs_mon_info_t structure</p> <pre>typedef struct fcs_mon_info { stl_uint8_t FCSMonEn; /* 0: disable FCS function, 1: enable FCS function */ stl_uint8_t MCLKFreqAccuracy; /* input the expected accuracy of main clock, 5->5%*/ } fcs_mon_info_t;</pre>
Return	<p>0: IEC60730_TEST_NORMAL</p> <p>2: IEC60730_TEST_PARA_ERROR</p>

Description:

This API can enable/disable CSV main/sub clock function, and input the expected accuracy of main clock frequency. It should be called before system clock initialization.

4.5 Invariable Memory Test

Invariable memory in FM0+ MCU means On-Chip Flash. The Flash size can be configured according to different product shown as Table 1-1.

The CRC (Cyclic Redundancy Check) module is an error detection system. The CRC code is a remainder after an input data string is divided by the pre-defined generator polynomial, assuming the input data string is a high order polynomial. Ordinarily, a data string is suffixed by a CRC code when being sent, and the received data is divided by a generator polynomial as described above. If the received data is dividable, it is judged to be correct. On-Chip Flash Test confirms with CRC that data and program is correct.

This module can either use CCITT CRC16 or IEEE-802.3 CRC32, which can be configured by CRCCR: CRC32 bit. In this module, the generator polynomials are fixed to the numeric values for those two modes.

- CCITT CRC16 generator polynomial: 0x1021(Omitted most significant bit of 0x11021)
- IEEE-802.3 CRC32 generator polynomial: 0x04C11DB7

Due to the lack of CRC hardware module, we use software CRC16/32 to do the testing.

Following figure shows an application of CRC test when FM0+ MCU communicates with other devices.

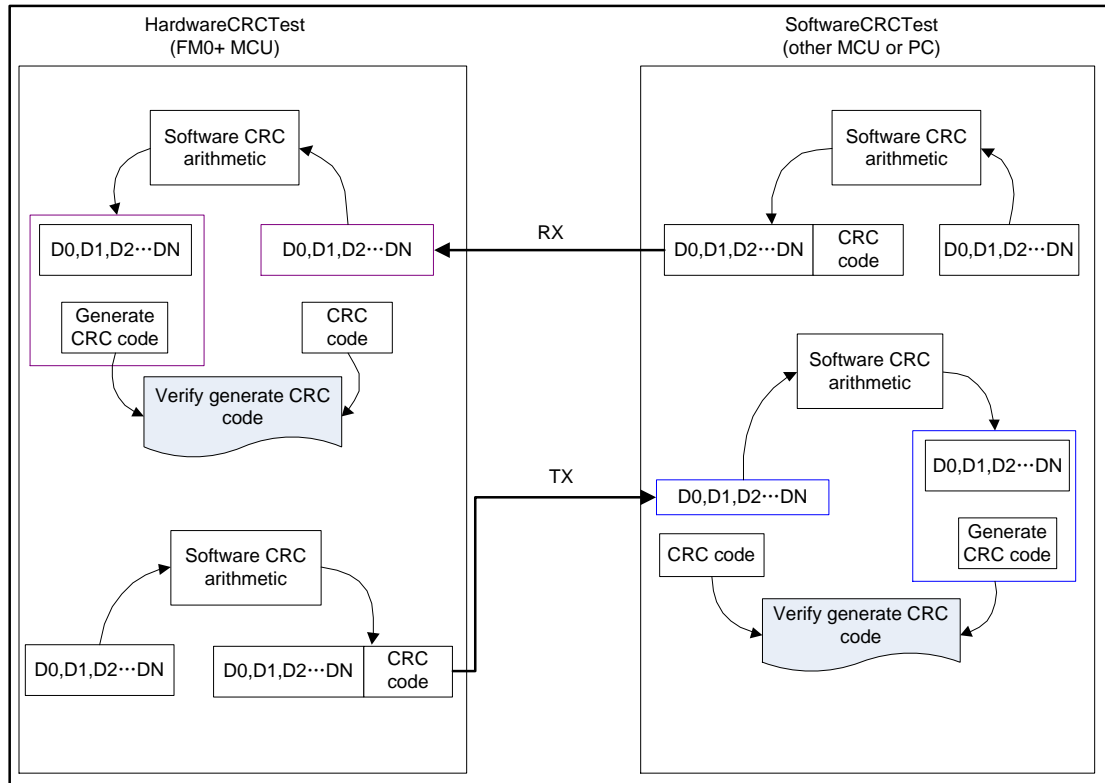


Figure 4-12: CRC test by communication

4.5.1 Test Description

To meet Class B requirement, Flash test must be checked for “single bit fault”. This test can be implemented as CRC16/32 test.

Enable the definition “FLASH_TEST_USE_CRC16” in IEC60730_user.h file if user wants to use CRC16 arithmetic for Flash test, otherwise CRC32 arithmetic will be implemented.

This test can be implemented at startup procedure to test whole code area, or it can also be called periodically to test sub blocks. Flash Test compares the generated CRC code at the time of test with the stored CRC code when build by a workbench tool. See, 8.1. **CRC code making method** for generating CRC code with a workbench tool.

Notes:

The CRC can also be used to test external communication data, which fulfills H.2.19.4.1 to detect hamming distance 3 errors.

■ Software CRC

➤ Software CRC16 Arithmetic

The CRC table enquiry method is used. The software CRC16 arithmetic should implement 6 steps to generate a new CRC code.

- (1) Initialize CRC code in 0xFFFF.
- (2) Store CRC code in “temp” after having divided it by 256.
- (3) Left shift 8 bits of the CRC code.
- (4) Store the CRC code by XOR CRC code with the data gotten from CRC table (use the data which calculated by XOR “temp” with the target data for a table index).
- (5) Increment the target data for 1 byte.
- (6) Repeat processes of (2) to (5) until byte size of target data.

The software CRC16 generation code and CRC16 table is shown as following figure.

```

stl uint16_t IEC60730 SoftwareCRC16Gen(stl uint8_t *pData, stl uint32_t Size)
{
    stl uint8_t temp;
    stl uint8_t *p temp data = pData;
    stl_uint16_t crc = 0xFFFF;
    while(Size-- != 0)
    {
        temp = crc/256;
        crc <<=8;
        crc ^= CRCTable[temp^*p temp data];
        p temp data++;
    }
    return crc;
}

```

Figure 4-13: Software CRC16 Generation Source Code

```

const stl uint16 t crc table[256]={
    0x0000, 0x1021, 0x2042, 0x3063, 0x4084, 0x50A5, 0x60C6, 0x70E7,
    0x8108, 0x9129, 0xA14A, 0xB16B, 0xC18C, 0xD1AD, 0xE1CE, 0xF1EF,
    0x1231, 0x0210, 0x3273, 0x2252, 0x52B5, 0x4294, 0x72F7, 0x62D6,
    0x9339, 0x8318, 0xB37B, 0xA35A, 0xD3BD, 0xC39C, 0xF3FF, 0xE3DE,
    0x2462, 0x3443, 0x0420, 0x1401, 0x64E6, 0x74C7, 0x44A4, 0x5485,
    0xA56A, 0xB54B, 0x8528, 0x9509, 0xE5EE, 0xF5CF, 0xC5AC, 0xD58D,
    0x3653, 0x2672, 0x1611, 0x0630, 0x76D7, 0x66F6, 0x5695, 0x46B4,
    0xB75B, 0xA77A, 0x9719, 0x8738, 0xF7DF, 0xE7FE, 0xD79D, 0xC7BC,
    0x48C4, 0x58E5, 0x6886, 0x78A7, 0x0840, 0x1861, 0x2802, 0x3823,
    0xC9CC, 0xD9ED, 0xE98E, 0xF9AF, 0x8948, 0x9969, 0xA90A, 0xB92B,
    0x5AF5, 0x4AD4, 0x7AB7, 0x6A96, 0x1A71, 0x0A50, 0x3A33, 0x2A12,
    0xDBFD, 0xCBDC, 0xFBBF, 0xEB9E, 0x9B79, 0x8B58, 0xBB3B, 0xAB1A,
    0x6CA6, 0x7C87, 0x4CE4, 0x5CC5, 0x2C22, 0x3C03, 0x0C60, 0x1C41,
    0xEDAE, 0xFD8F, 0xCDEC, 0xDDCD, 0xAD2A, 0xBD0B, 0x8D68, 0x9D49,
    0x7E97, 0x6EB6, 0x5ED5, 0x4EF4, 0x3E13, 0x2E32, 0x1E51, 0x0E70,
    0xFF9F, 0xEFBE, 0xDFDD, 0xCFFC, 0xBF1B, 0xAF3A, 0x9F59, 0x8F78,
    0x9188, 0x81A9, 0xB1CA, 0xA1EB, 0xD10C, 0xC12D, 0xF14E, 0xE16F,
    0x1080, 0x00A1, 0x30C2, 0x20E3, 0x5004, 0x4025, 0x7046, 0x6067,
    0x83B9, 0x9398, 0xA3FB, 0xB3DA, 0xC33D, 0xD31C, 0xE37F, 0xF35E,
    0x02B1, 0x1290, 0x22F3, 0x32D2, 0x4235, 0x5214, 0x6277, 0x7256,
    0xB5EA, 0xA5CB, 0x95A8, 0x8589, 0xF56E, 0xE54F, 0xD52C, 0xC50D,
    0x34E2, 0x24C3, 0x14A0, 0x0481, 0x7466, 0x6447, 0x5424, 0x4405,
    0xA7DB, 0xB7FA, 0x8799, 0x97B8, 0xE75F, 0xF77E, 0xC71D, 0xD73C,
    0x26D3, 0x36F2, 0x0691, 0x16B0, 0x6657, 0x7676, 0x4615, 0x5634,
    0xD94C, 0xC96D, 0xF90E, 0xE92F, 0x99C8, 0x89E9, 0xB98A, 0xA9AB,
    0x5844, 0x4865, 0x7806, 0x6827, 0x18C0, 0x08E1, 0x3882, 0x28A3,
    0xCB7D, 0xDB5C, 0xEB3F, 0xFB1E, 0x8BF9, 0x9BD8, 0xABBB, 0xBB9A,
    0x4A75, 0x5A54, 0x6A37, 0x7A16, 0x0AF1, 0x1AD0, 0x2AB3, 0x3A92,
    0xFD2E, 0xED0F, 0xDD6C, 0xCD4D, 0xBDAA, 0xAD8B, 0x9DE8, 0x8DC9,
    0x7C26, 0x6C07, 0x5C64, 0x4C45, 0x3CA2, 0x2C83, 0x1CE0, 0x0CC1,
    0xEF1F, 0xFF3E, 0xCF5D, 0xDF7C, 0xAF9B, 0xBFBA, 0x8FD9, 0x9FF8,
    0x6E17, 0x7E36, 0x4E55, 0x5E74, 0x2E93, 0x3EB2, 0x0ED1, 0x1EF0
};

```

Figure 4-14: CRC16 table

➤ **Software CRC32 Arithmetic**

The CRC table enquiry method is used. The software CRC32 arithmetic should implement 6 steps to generate a new CRC code.

- (1) Initialize CRC code in 0xFFFFFFFF.
- (2) Store CRC code in “temp” after having 24 bits shifted it.
- (3) Store the CRC code by XOR left 8 bits shifted CRC code with the data gotten from CRC table (use the data which calculated by XOR “temp” with the target data for a table index).
- (4) Increment the target data for 1 byte.
- (5) Repeat processes of (2) to (4) until byte size of target data.
- (6) Finally, return reversed bit of CRC code.

The software CRC32 generation code and CRC32 table is shown as following figure.

```

stl uint32 t IEC60730 SoftwareCRC32Gen(stl uint8 t *pData, stl uint32 t Size)
{
    stl uint8 t temp;
    stl uint8 t *p temp data = pData;
    stl_uint32_t crc = 0xFFFFFFFF;
    while(Size--)
    {
        temp=( crc >> 24 );
        crc = ( crc << 8 ) ^ CRCTable[temp^*p temp data];
        p temp data++;
    }
    return ~crc;
}

```

Figure 4-15: Software CRC32 Generation Source Code

```

const stl uint32 t CRCTable[256]={
  0x00000000L, 0x04c11db7L, 0x09823b6eL, 0x0d4326d9L,
  0x130476dcL, 0x17c56b6bL, 0x1a864db2L, 0x1e475005L,
  0x2608edb8L, 0x22c9f00fL, 0x2f8ad6d6L, 0x2b4bcb61L,
  0x350c9b64L, 0x31cd86d3L, 0x3c8ea00aL, 0x384fbbdbL,
  0x4c11db70L, 0x48d0c6c7L, 0x4593e01eL, 0x4152fda9L,
  0x5f15adacL, 0x5bd4b01bL, 0x569796c2L, 0x52568b75L,
  0x6a1936c8L, 0x6ed82b7fL, 0x639b0da6L, 0x675a1011L,
  0x791d4014L, 0x7ddc5da3L, 0x709f7b7aL, 0x745e66cdL,
  0x9823b6e0L, 0x9ce2ab57L, 0x91a18d8eL, 0x95609039L,
  0x8b27c03cL, 0x8fe6dd8bL, 0x82a5fb52L, 0x8664e6e5L,
  0xbe2b5b58L, 0xbaea46efL, 0xb7a96036L, 0xb3687d81L,
  0xad2d848L, 0xa9ee3033L, 0xa4ad16eaL, 0xa06c0b5dL,
  0xd4326d90L, 0xd0f37027L, 0xddb056feL, 0xd9714b49L,
  0xc7361b4cL, 0xc3f706fbL, 0xceb42022L, 0xca753d95L,
  0xf23a8028L, 0xf6fb9d9fL, 0xfbb8bb46L, 0xff79a6f1L,
  0xe13ef6f4L, 0xe5fffeb43L, 0xe8bccd9aL, 0xec7dd02dL,
  0x34867077L, 0x30476dc0L, 0x3d044b19L, 0x39c556aeL,
  0x278206abL, 0x23431b1cL, 0x2e003dc5L, 0x2ac12072L,
  0x128e9dcfL, 0x164f8078L, 0x1b0ca6a1L, 0x1fcdbb16L,
  0x018aeb13L, 0x054bf6a4L, 0x0808d07dL, 0x0cc9cdcaL,
  0x7897ab07L, 0x7c56b6b0L, 0x71159069L, 0x75d48ddeL,
  0x6b93dadbL, 0x6f52c06cL, 0x6211e6b5L, 0x66d0fb02L,
  0x5e9f46bfL, 0x5a5e5b08L, 0x571d7dd1L, 0x53dc6066L,
  0x4d9b3063L, 0x495a2dd4L, 0x44190b0dL, 0x40d816baL,
  0xaca5c697L, 0xa864db20L, 0xa527fdf9L, 0xale6e04eL,
  0xbfa1b04bL, 0xbb60adfcL, 0xb6238b25L, 0xb2e29692L,
  0x8aad2b2fL, 0x8e6c3698L, 0x832f1041L, 0x87ee0df6L,
  0x99a95df3L, 0x9d684044L, 0x902b669dL, 0x94ea7b2aL,
  0xe0b41de7L, 0xe4750050L, 0xe9362689L, 0xedf73b3eL,
  0xf3b06b3bL, 0xf771768cL, 0xfa325055L, 0xfef34de2L,
  0xc6bcf05fL, 0xc27dede8L, 0xcf3ecb31L, 0xcbffd686L,
  0xd5b88683L, 0xd1799b34L, 0xdc3abdedL, 0xd8fba05aL,
  0x690ce0eeL, 0x6dcdfd59L, 0x608edb80L, 0x644fc637L,
  0x7a089632L, 0x7ec98b85L, 0x738aad5cL, 0x774bb0ebL,
  0x4f040d56L, 0x4bc510e1L, 0x46863638L, 0x42472b8fL,
  0x5c007b8aL, 0x58c1663dL, 0x558240e4L, 0x51435d53L,
  0x251d3b9eL, 0x21dc2629L, 0x2c9f00f0L, 0x285e1d47L,
  0x36194d42L, 0x32d850f5L, 0x3f9b762cL, 0x3b5a6b9bL,
  0x0315d626L, 0x07d4cb91L, 0x0a97ed48L, 0x0e56f0ffL,
  0x1011a0faL, 0x14d0bd4dL, 0x19939b94L, 0x1d528623L,
  0xf12f560eL, 0xf5ee4bb9L, 0xf8ad6d60L, 0xfc6c70d7L,
  0xe22b20d2L, 0xe6ea3d65L, 0xeba91bbcL, 0xef68060bL,
  0xd727bbb6L, 0xd3e6a601L, 0xdea580d8L, 0xda649d6fL,
  0xc423cd6aL, 0xc0e2d0ddL, 0xcda1f604L, 0xc960ebb3L,
  0xbd3e8d7eL, 0xb9ff90c9L, 0xb4bcb610L, 0xb07daba7L,
  0xae3afba2L, 0xaafbe615L, 0xa7b8c0ccL, 0xa379dd7bL,
  0x9b3660c6L, 0x9fff77d71L, 0x92b45ba8L, 0x9675461fL,
  0x8832161aL, 0x8cf30badL, 0x81b02d74L, 0x857130c3L,
  0x5d8a9099L, 0x594b8d2eL, 0x5408abf7L, 0x50c9b640L,
  0x4e8ee645L, 0x4a4fffb2L, 0x470cdd2bL, 0x43cdc09cL,
  0x7b827d21L, 0x7f436096L, 0x7200464fL, 0x76c15bf8L,
  0x68860bfdL, 0x6c47164aL, 0x61043093L, 0x65c52d24L,
  0x119b4be9L, 0x155a565eL, 0x18197087L, 0x1cd86d30L,
  0x029f3d35L, 0x065e2082L, 0x0b1d065bL, 0x0fcd1becL,
  0x3793a651L, 0x3352bbe6L, 0x3e119d3fL, 0x3ad08088L,
  0x2497d08dL, 0x2056cd3aL, 0x2d15ebe3L, 0x29d4f654L,
  0xc5a92679L, 0xc1683bceL, 0xcc2b1d17L, 0xc8ea00a0L,
  0xd6ad50a5L, 0xd26c4d12L, 0xdf2f6bcbL, 0xdbee767cL,
  0xe3a1cbc1L, 0xe760d676L, 0xea23f0afL, 0xeeeed18L,
  0xf0a5b1d1L, 0xf464a0aaL, 0xf9278673L, 0xfde69bc4L,
  0x89b8fd09L, 0x8d79e0beL, 0x803ac667L, 0x84fbdbd0L,
  0x9abc8bd5L, 0x9e7d9662L, 0x933eb0bbL, 0x97ffad0cL,
  0xafb010b1L, 0xab710d06L, 0xa6322bdfL, 0xa2f33668L,
  0xbcb4666dL, 0xb8757bdaL, 0xb5365d03L, 0xb1f740b4L
};

```

Figure 4-16: CRC32 table

4.5.2 API Definition

■ Use CRC16 arithmetic to implement Flash test

Name	IEC60730_SoftwareCRC16Gen
Parameter	pData: test data address Size: data size
Return	CRC value

Description:

This API implements CRC16 generation by software CRC arithmetic. The CRC table enquiry method is used.

Name	IEC60730_SoftwareCRC16Test
Parameter	pData: test data address Size: data size Crc: expected CRC code
Return	0: IEC60730_TEST_NORMAL 1: IEC60730_TEST_FUNC_ERROR

Description:

This API implements software CRC16 test.

■ **Use CRC32 arithmetic to implement Flash test**

Name	IEC60730_SoftwareCRC32Gen
Parameter	pData: test data address Size: data size
Return	CRC value

Description:

This API implements CRC32 generation by software CRC arithmetic. The CRC table enquiry method is used.

Name	IEC60730_SoftwareCRC32Test
Parameter	pData: test data address Size: data size Crc: expected CRC code
Return	0: IEC60730_TEST_NORMAL 1: IEC60730_TEST_FUNC_ERROR

Description:

This API implements software CRC32 test.

4.6 Variable Memory Test

Variable memory test in FM0+ MCU means SRAM test, the SRAM size can be configured according to different product, shown as Table 1-1.

4.6.1 Test Description

To meet Class B requirement, SRAM test must be checked for “DC fault”. A simple checkerboard method is used to implement this SRAM.

This test can be implemented at startup procedure to test entire SRAM area. And it can also test sub blocks periodically when code is running, however user should pay attention that the data will be destroyed after test.

As all RAM area is involved in this test, it is better not to use variable in this test, so assembly is used to implement register test. And as it is highly critical, it is designed that once RAM test error is detected, program will run into an infinite loop.

The procedure to test 1 word data is shown as following figure.

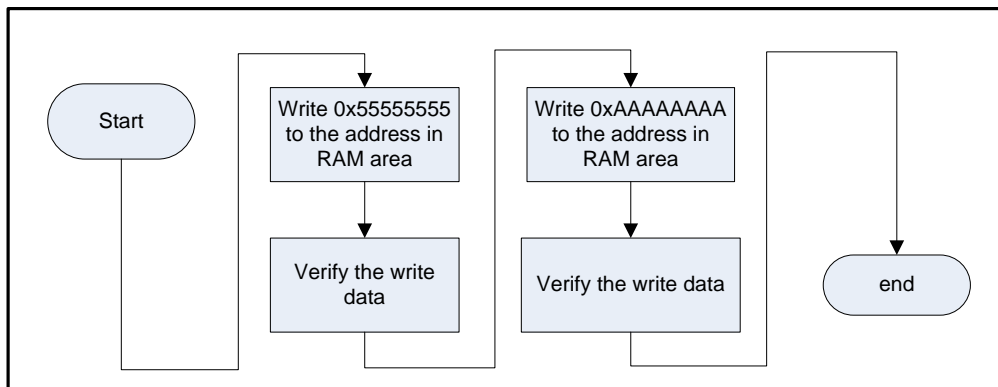


Figure 4-17: Test 1 Word with Checkerboard Method

4.6.2 API Definition

Name	iec60730_ram_test
Parameter	StartAddr(R0): start RAM address EndAddr(R1): end RAM address
Return	None

Description:

This API tests SRAM area with Checkerboard arithmetic which writes alternate “0” and “1” to memory, and verifies if the write data is right by reading back the data written. It can detect stuck-at faults and direct coupling faults.

This test should be called in startup procedure, and it can also be called in cycle, but the data is not saved after test.

4.7 IO Test

FM0+ MCU has up to 10 IO ports: Port0-Port8 and PortE, each port has up to 16 channels. These ports can be configured according to different package.

4.7.1 Test Description

To meet Class B requirement, GPIO must be check for “Function error”. So function test is implemented for both input and output function. The IO direction can be configured by IO register shown in Figure 4-18. Please refer to the peripheral manual for detail of GPIO.

- Input IO configuration: ADE=0,PFR=0,DDR=0
- Output IO configuration: ADE=0,PFR=0,DDR=1

I/O Port Function		ADE/ SPSR	PFR	DDR	PCR
Available main function	Available sub function				
Special pin Analog Input Oscillation	N/A	1	-	-	Disconnect
GPIO function input pin	Peripheral function input pin		0	0	Valid
GPIO function output pin	GPIO function input pin (FB) Peripheral function input pin (FB)			1	Disconnect
Peripheral function output pin	GPIO function input pin (FB) Peripheral function input pin (FB)	0			Disconnect
Peripheral function bidirectional pin	GPIO function input pin (FB) Peripheral function input pin (FB)		1	-	Valid
Peripheral function input pin	GPIO function input pin				Valid

Figure 4-18: IO Function Configuration

The IO input test checks if selected IO input value which stores in PDIR is same with expected value, . And IO output can check if output value by which stores in PDOR is correct. These tests should be tested in startup procedure as function test.

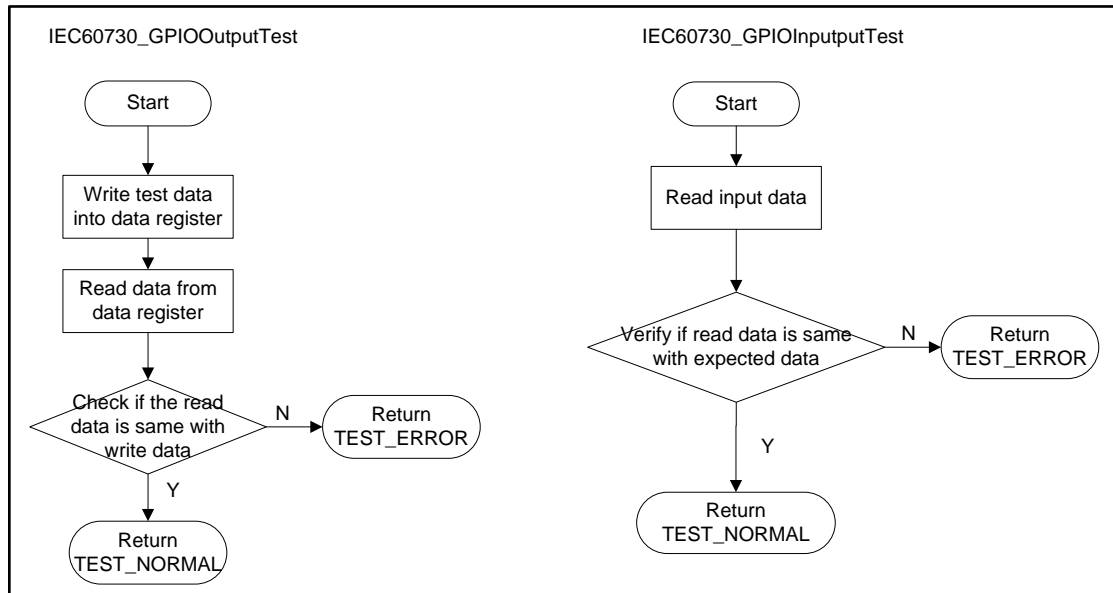


Figure 4-19: IO Input/Output Test Flowchart

4.7.2 API Definition

Name	IEC60730_GPIOWriteTest
Parameter	Port: port number Bit: bit number Value: output level
Return	0: IEC60730_TEST_NORMAL 1: IEC60730_TEST_FUNC_ERROR 2: IEC60730_TEST_PARA_ERROR

Description:

This API implements GPIO output test by setting a level for output pin and check if read back value is the expected value.

Name	IEC60730_GPIOInputTest
Parameter	Port: port number Bit: bit number Value: expected pin level
Return	0: IEC60730_TEST_NORMAL 1: IEC60730_TEST_FUNC_ERROR 2: IEC60730_TEST_PARA_ERROR

Description:

This API implements GPIO input test by reading the value from input pin and check if read value is the expected value.

4.8 AD Test

FM0+ MCU integrates a 12bit AD module. S6E1A1 and S6E1C3 have 1 unit with totally 8 channels. S6E1B8 has 1 unit with totally 24 channels.

4.8.1 Test Description

To meet Class B requirement, AD must be check for “Function error”. This test samples AD signal from selected AD channels and check if the AD convert values are in the expected ranges.

Scan mode is used, multi-channel can be tested at the same time. The AD test flowchart of checking single-channel is shown as following figure.

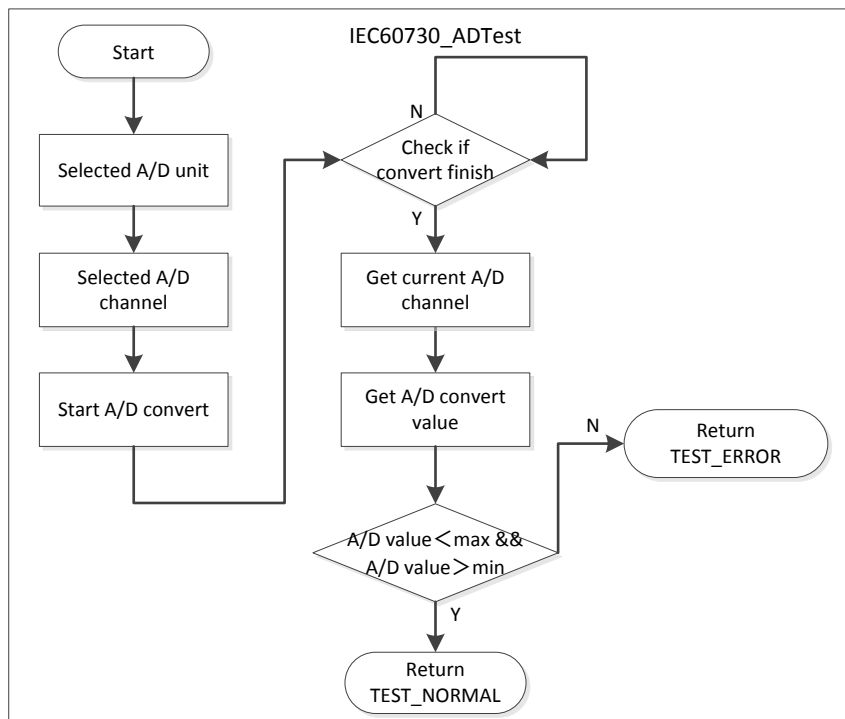


Figure 4-20: AD Test Flowchart

4.8.2 API Definition

Name	IEC60730_ADTest
Parameter	<p>ADTest_Info: a ad_test_info_t structure</p> <pre>typedef struct ad_test_info { uint8_t ADUnit; /* unit num, 8/10 bit A/D -> 0/1/2 */ uint8_t *Ch; /* pointer to AD channel num */ uint8_t ChSize; /* channel size */ uint16_t *ExpLowerValue; /* pointer to expected lower value */ uint16_t *ExpUpperValue; /* pointer to expected upper value */ } ad_test_info_t;</pre>
Return	<p>0: IEC60730_TEST_NORMAL 1: IEC60730_TEST_FUNC_ERROR 2: IEC60730_TEST_PARA_ERROR</p>

Description:

This API implements AD test by checking if AD convert result is in expected range. It should be implemented in startup procedure.

5 Example project

Two demo projects are provided according to IAR and keil IDE. This chapter introduces IAR demo project based on SK-FM0P-48LQFP-9AF160K V1.0.0 and shows how to integrate the IEC60730 STL into a real system. For SK-FM0-64L-S6E1C3 V10 supporting and SK-FM0-100L-S6E1B8 V10 supporting, please configure the corresponding *.icf file and flashloader file in IDE setting option. Please indicate the IC series in board.h file.

5.1 User Configuration

User should first configure some definitions in IEC60730_user.h file.

5.1.1 The definition “IEC60730_FLASHTEST_USE_CRC16”

If user wants to use CRC16 arithmetic for Flash test, enable this definition, if user wants to use CRC32 arithmetic for Flash test, disable this definition.

In this demo program, CRC32 arithmetic is used.

5.1.2 The definition “IEC60730_CLKTEST_USE_CSV”

If user wants to use CSV to implement clock test, enable this definition, or clock test will be done with watch counter as standard timer, which is sourced by sub clock.

In the demo program, the latter method is demonstrated.

5.1.3 Define the corresponding board

If use board SK-FM0P-48LQFP-9AF160K please chose code “#define SK_FM0P_48LQFP_9AF160K_V1_0_0 1” open.

If use board SK-FM0-64L-S6E1C3 V10 please chose code “#define SK_FM0_64L_S6E1C3_V1_0 1” open.

If use board SK-FM0-100L-S6E1B8 V10 please chose code “#define SK_FM0_100L_S6E1B8_V1_0 1” open.

5.2 Project Structure

Class B STL routines are divided into two main processes: startup and periodic self-tests. The periodic test must be initialized by a set-up block before it is applied.

5.2.1 Startup Self-Test

PC, register, SRAM test are all startup self-tests, and they should be called in reset handler.

And Flash, AD, IO can be tested after system clock initialization after program jumps into main function.

For AD test, the channel 00 and channel 03 of SK-FM0P-48LQFP-9AF160K V1.0.0 are used for test, the channel 00(potentiometer input) of SK-FM0-64L-S6E1C3 V10 and SK-FM0-100L-S6E1B8 V10 are used for test.

For IO input test, key input pin P04/ P0F of SK-FM0P-48LQFP-9AF160K V1.0.0 are used for test. The key input pin P08 of SK-FM0-100L-S6E1BA8 V10 is used for test. The key input pin P53 of SK-FM0-64L-S6E1C3 V10 is used for test.

For IO output test, pin P61 of SK-FM0P-48LQFP-9AF160K V1.0.0 are used for test. Pin P3D/P3E/P3F of SK-FM0-100L-S6E1B8 V10 and SK-FM0-64L-S6E1C3 V10 are used for test.

5.2.2 Periodic Test Initialization

Interrupt and clock test should be initialized before tests start.

■ Interrupt Test Initialization

It is designed that a dual time interrupt is used to monitor reload timer 0-3. The initialization setting parameter is shown as following table.

Interrupt Name	Interrupt Interval	interrupt of dual timer	Standard Frequency	Pre-defined Range
Reload timer 0	2.5ms	25ms	10	[8,12]
Reload timer 1	1ms	25ms	25	[22, 28]
Reload timer 2	500us	25ms	50	[45,55]
Reload timer 3	250us	25ms	100	[95,105]

Table 5-1: IO Input/Output Test Flowchart

■ Clock Test Initialization

The CPU clock is HCLK, and the source clock of dual timer in this system is set to PCLK0 (HCLK/2). So the source clock of dual timer can be tested indirectly instead of CPU clock by watch counter.

It is designed that the interrupt Interval of watch counter is 0.5s and interrupt Interval of dual timer is 25ms, so the Standard Frequency of dual timer is 20 and the accepted range is set between 18 and 22. Assume it takes 10 cycles to implement main loop. So the minimum execution time of main loop is 1/4000000 s, so set the threshold value to 10000000.

5.2.3 Periodic Test

The interrupt and clock test should be tested in period when code is running.

Integrate **IEC60730_IntTest** into dual timer interrupt and **IEC60730_IntCnt** into each reload timer interrupts.

Integrate **IEC60730_ClkTest** into watch counter interrupt, **IEC60730_ClkCnt** into dual timer interrupt, and **IEC60730_ClkMonInMainloop** into main loop.

The Figure 5-1 shows the basic principle of how to integrate the Class B software package into this application software.

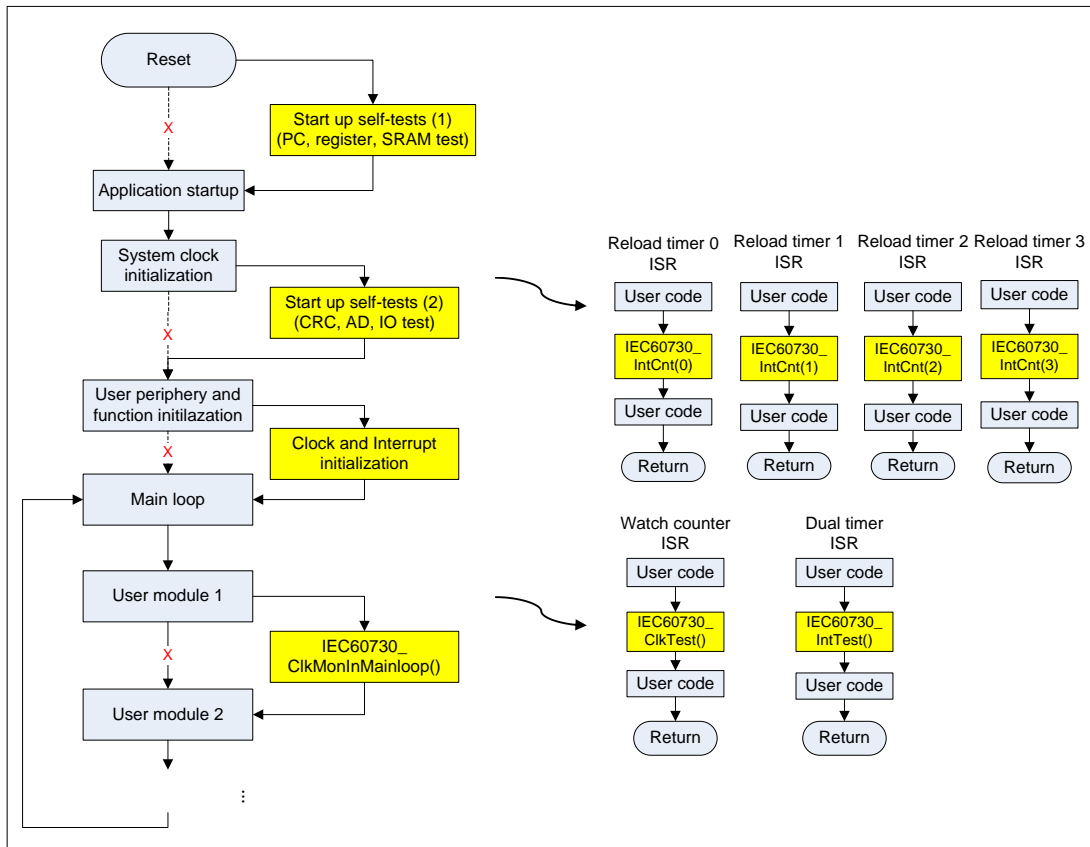


Figure 5-1: Project Structure

5.3 Sample Code

5.3.1 Startup File

■ Reset handler

```

Reset Handler
    BL    iec60730_reg_test ; after reset, test register first
    BL    iec60730_pc_test  ; test pc
    LDR   R0, =0x20000000   ; set RAM start address
    LDR   R1, =0x200017FF   ; set RAM end address
    BL    iec60730_ram_test ; test all D-RAM area
    
```

Figure 5-2: Reset Handler Sample Code

5.3.2 Main File

■ Main function

```

uint32 t main(void)
{
    uint32 t sw crc;
    uint8 t a[10] = {0x00,0x11,0x22,0x33,0x44,0x55,0x66,0x77,0x88,0x99};

    /* Use CSV to implement clock test */
#ifdef IEC60730_CLKTEST_USE_CSV
    uint16 t reg rst str;
    fcs_mon_info_t fcs_mon_info = {FCS_MON_DISABLE, 5};
    if(IEC60730_TEST_NORMAL != IEC60730_CheckCSVStat(&reg rst str))
    {
        while(1);
    }
    IEC60730_InitCSV(CSV_MCLK_MON_ENABLE, CSV_SCLK_MON_ENABLE, fcs_mon_info);
#endif

    SystemInit();

#ifdef IEC60730_FLASHTEST_USE_CRC16
    /* use software CRC16 to calculate expected crc first,
       then verify if the CRC code calculated by hardware is same with expected crc */
    sw_crc = IEC60730_SoftwareCRC16Gen(a, sizeof(a));
    if(IEC60730_TEST_NORMAL != IEC60730_SoftwareCRC16Test(a, sizeof(a), sw_crc))
    {
        while(1);
    }
#else
    /* use software CRC32 to calculate expected crc first,
       then verify if the CRC code calculated by hardware is same with expected crc */
    sw_crc = IEC60730_SoftwareCRC32Gen(a, sizeof(a));
    if(IEC60730_TEST_NORMAL != IEC60730_SoftwareCRC32Test(a, sizeof(a), sw_crc))
    {
        while(1);
    }
#endif

    /* GPIO output test */
#ifdef SK_FM0P_48LQFP_9AF160K_V1_0_0
    /*
     * test P61 (control LED)
     * Test LED PORT Output
     */
    if(IEC60730_TEST_NORMAL != IEC60730_GPIOOutputTest(LED_PORT,LED_PIN,TEST_PIN_LOW))
    {
        while(1);
    }
    if(IEC60730_TEST_NORMAL != IEC60730_GPIOOutputTest(LED_PORT,LED_PIN,TEST_PIN_HIGH))
    {
        while(1);
    }
}
#endif

#if (SK_FM0_64L_S6E1C3_V1_0 || SK_FM0_100L_S6E1B8_V1_0)
/* Test LED R PORT Output */
if(IEC60730_TEST_NORMAL != IEC60730_GPIOOutputTest(LED_R_PORT,LED_R_PIN,TEST_PIN_HIGH))
{
    while(1);
}
if(IEC60730_TEST_NORMAL != IEC60730_GPIOOutputTest(LED_R_PORT,LED_R_PIN,TEST_PIN_LOW))
{
    while(1);
}
/* Test LED G PORT Output */
if(IEC60730_TEST_NORMAL != IEC60730_GPIOOutputTest(LED_G_PORT,LED_G_PIN,TEST_PIN_HIGH))

```

```

{
    while(1);
}
if(IEC60730 TEST NORMAL != IEC60730 GPIOOutputTest(LED G PORT,LED G PIN,TEST PIN LOW))
{
    while(1);
}
/* Test LED B PORT Output */
if(IEC60730 TEST NORMAL!=IEC60730 GPIOOutputTest(LED B PORT,LED B PIN,TEST PIN HIGH))
{
    while(1);
}
if(IEC60730 TEST NORMAL!=IEC60730 GPIOOutputTest(LED B PORT,LED B PIN,TEST PIN LOW))
{
    while(1);
}
}
#endif

/* GPIO input test
* test P04
* test P0F
*/
#ifdef SK FM0P 48LQFP 9AF160K V1 0 0
/* Test GPIO P04 input */
if(IEC60730 TEST NORMAL != IEC60730 GPIOInputTest(PORT NUM 0, BIT NUM 4,
TEST PIN HIGH))
{
    while(1);
}
/* Test GPIO P0F input */
if(IEC60730 TEST NORMAL != IEC60730 GPIOInputTest(PORT NUM 0, BIT NUM F,
TEST PIN HIGH))
{
    while(1);
}
}
#endif

#ifdef SK FM0 100L S6E1B8 V1 0
/* Test GPIO P08 input */
bFM0P LCDC LCDCC3 PICTL = 1;
FM0P GPIO->ADE &= ~(1<<23);
if(IEC60730 TEST NORMAL != IEC60730 GPIOInputTest(PORT NUM 0, BIT NUM 8,
TEST PIN HIGH))
{
    while(1);
}
}
#endif

#ifdef SK FM0 64L S6E1C3 V1 0
/* Test GPIO P53 input */
if(IEC60730 TEST NORMAL != IEC60730 GPIOInputTest(PORT NUM 5, BIT NUM 3,
TEST PIN HIGH))
{
    while(1);
}
}
#endif
/* Init LEDs */
LED Init();

/* Init Buttons */
Button Init();

#ifdef SK FM0P 48LQFP 9AF160K V1 0 0

/* AD test - Check if input is in expected range.
* Steps - 1.Connect AN00 test pin (P10-NO.25)to VCC
* - 2.Connect AN03 test pin (P13-NO.28)to GND
* - This ADTest function will sample the analog value and compare
* with the set range
*/
if(IEC60730 TEST NORMAL != IEC60730 ADTest(ADC UNIT0, CH00, 0xFFA, 0x1000))
{

```

```

        while(1);
    }
    if(IEC60730 TEST NORMAL != IEC60730 ADTest(ADC UNIT0, CH03, 0x000, 0x010))
    {
        while(1);
    }
#endif
#if (SK FM0 64L S6E1C3 V1 0)

/* AD test - Check if input is in expected range.
 * Steps - <<For SK FM0 100L S6E1B8 V1 0 and SK FM0 64L S6E1C3 V1 0>>
 * - Rotate pot RP1 to the middle first, setting the target value to 0x800.
 * - Set expected range to 0x700~0x900
 * - This ADTest function will sample the potentio value and compare
 * with the set range
 */
if(IEC60730 TEST NORMAL != IEC60730 ADTest(ADC UNIT0, CH00, 0x700, 0x900))
{
    while(1);
}
#elif (SK FM0 100L S6E1B8 V1 0)
/* AD test - Check if input is in expected range.
 * Steps - <<For SK FM0 100L S6E1B8 V1 0 and SK FM0 64L S6E1C3 V1 0>>
 * - Rotate pot RP1 to the middle first, setting the target value to 0x800.
 * - Set expected range to 0x700~0x900
 * - This ADTest function will sample the potentio value and compare
 * with the set range
 */
if(IEC60730 TEST NORMAL != IEC60730 ADTest(ADC UNIT0, CH19, 0x700, 0x900))
{
    while(1);
}
#endif

/* Interrupt test initialization */
IEC60730 IntTestInit(IntTest Freq, \
                    IntTest FreqLower, \
                    IntTest FreqUpper, \
                    IntTest FreqInit, \
                    sizeof(IntTest Freq)/sizeof(uint32 t));

#ifndef IEC60730 CLKTEST USE CSV
/* clock test initialization
 * test CPU clock by checking if the 25ms interval time is set for dual timer,
 * the occurrence frequency of dual-time is about 20 per 500ms (produced by watch counter)
 * 1 cycle time = (1/40MHz). Assume it takes 10 cycles to implement main loop.
 */
IEC60730 ClkInit(18, 22, 10000000);

/* Initialize watch-counter */
WTC Init();
#endif
/* Initialize dual-timer */
DT Init();

/* Initialize 4 base-timers */
BT Init();

/* Main Loop */
while(1)
{
    /* Wait for timer tick- LED will keep blinking */
    /* Dual-Timer Tmr1Tick-25ms */
    if(40 == Tmr1Tick)
    {
        LED Twinkle();
        Tmr1Tick = 0; // clear timer tick
    }
}

#ifndef IEC60730 CLKTEST USE CSV
/* monitor watch counter interrupt */
if(IEC60730 TEST NORMAL != IEC60730_ClkMonInMainloop())

```

```
{  
    while(1);  
}  
#endif  
}
```

Figure 5-3: Main Function Sample Code

■ Dual Timer ISR

```
void DT QDU IRQHandler(void)
{
    if(1 == FM0P DTIM->TIMER1RIS&0x01)
    {
        FM0P DTIM->TIMER1INTCLR = 1;
#ifdef IEC60730_CLKTEST_USE_CSV
        /* count the clock tick */
        IEC60730 ClkCnt();
#endif
        /* Set timer tick for LEDs */
        Tmr1Tick++;
        /* implement interrupt test */
        if(IEC60730 TEST NORMAL != IEC60730 IntTest())
        {
            while(1);
        }
    }
}
```

Figure 5-4: Dual Timer ISR

■ Watch Counter ISR

```
void Wc_IrqHandler(void)
{
    if(1 == bFM0P INTREQ IRQ24MON WCINT)
    {
        /* Clear interrupt flag */
        FM0P WC->WCCR &= 0xFE;

        /* implement clock test */
        if(IEC60730 TEST NORMAL != IEC60730 ClkTest())
        {
            while(1);
        }
    }
}
```

Figure 5-5: Watch Counter ISR

■ Reload Timer ISR

For S6E1A1 and S6E1B8

```
void BT0_3_FLASH_IRQHandler(void)
{
    if(FM0P BT0 RT->STC&0x01)
    {
        FM0P BT0 RT->STC = FM0P BT0 RT->STC & 0xFE;
        IEC60730 IntCntPro(0); /* count frequency value for interrupt 0 */
    }
    else if(FM0P BT1 RT->STC&0x01)
    {
        FM0P_BT1_RT->STC = FM0P_BT1_RT->STC & 0xFE;
        IEC60730 IntCntPro(1); /* count frequency value for interrupt 1 */
    }
    else if(FM0P_BT2_RT->STC&0x01)
    {
        FM0P BT2 RT->STC = FM0P BT2 RT->STC & 0xFE;
        IEC60730_IntCntPro(2); /* count frequency value for interrupt 2 */
    }
    else if(FM0P_BT3_RT->STC&0x01)
```

```

{
    FM0P BT3 RT->STC = FM0P BT3 RT->STC & 0xFE;
    IEC60730 IntCntPro(3);      /* count frequency value for interrupt 3 */
}
}

```

Figure 5-6: Reload Timer ISR

For S6E1C3

```

void BT0 4 IRQHandler(void)
{
    FM0P BT0 RT->STC = FM0P BT0 RT->STC & 0xFE;
    IEC60730 IntCntPro(0);      /* count frequency value for interrupt 0 */
}
void BT1 5 IRQHandler(void)
{
    FM0P BT1 RT->STC = FM0P BT1 RT->STC & 0xFE;
    IEC60730 IntCntPro(1);      /* count frequency value for interrupt 1 */
}
void BT2 6 IRQHandler(void)
{
    FM0P BT2 RT->STC = FM0P BT2 RT->STC & 0xFE;
    IEC60730 IntCntPro(2);      /* count frequency value for interrupt 2 */
}
void BT3 7 IRQHandler(void)
{
    FM0P BT3 RT->STC = FM0P BT3 RT->STC & 0xFE;
    IEC60730 IntCntPro(3);      /* count frequency value for interrupt 3 */
}

```

Figure 5-7: Reload Timer ISR

6 STL API Performance

API Name	Execution time (Cycles)	Stack usage (Bytes)	ROM Usage (Bytes)	RAM usage (Bytes) (Global variable)
iec60730_pc_test	48	0	200	0
iec60730_reg_test	222	0	604	0
IEC60730_IntTestInit	81 (4 interrupts)	8	62	0
IEC60730_IntCntPro	22	4	46	0
IEC60730_IntTest	168 (4 interrupts)	4	98	20
IEC60730_ClkCnt	14	4	36	0
IEC60730_ClkTest	43	8	84	32
IEC60730_ClkMonInMainloop	43	8	76	0
IEC60730_ClkTestReset	15	0	32	0
IEC60730_InitCSV	62	16	264	0
IEC60730_CheckCSVStat	11	4	80	0
IEC60730_SoftwareCRC16Gen	191 (10 bytes data)	16	66+ 512 (CRC table)	0
IEC60730_SoftwareCRC16Test	199 (10 bytes data)	8	22	0
IEC60730_SoftwareCRC32Gen	169 (10 bytes data)	8	48+ 1024 (CRC table)	0
IEC60730_SoftwareCRC32Test	176	8	20	0



	(10 bytes data)			
iec60730_ram_test	104 (16 bytes data)	0	80	0
IEC60730_GPIOWriteTest	127	28	288	0
IEC60730_GPIOInputTest	136	36	320	0
IEC60730_ADTest	1014	76	876	0

Table 6-1: STL API Performance

Notes:

- 1. The code execution cycle is tested in normal run status.**
- 2. The ROM size of this STL is 5152 bytes. (Use CRC16 for Flash test, and watch counter for clock test)**
- 3. The code is compiled by IAR Embedded Workbench IDE V7.10 and optimization level was set to “Low”.**

7 Reference Documents

- [1]. IEC 60730-1 Reference Manual Edition3.2, 2007
- [2]. ARMv7-M Architecture Application Level Reference Manual, 2008
- [3]. Cortex-M0P r0p1 Technical Reference Manual, 2012
- [4]. S6E1A1-DS710-00001 (FM0+ Family - S6E1A1 Series Data Sheet)
- [5]. S6E1C3_DS710-00005-0v01-E
- [6]. S6E1B3_DS710-00004-0v01-E
- [7]. Spansion 32-bit Microcontroller FM0+ Peripheral Manual, 2013
- [8]. IAR SYSTEM Technical Note 65473 – IELFTOOL Checksum – Basic actions

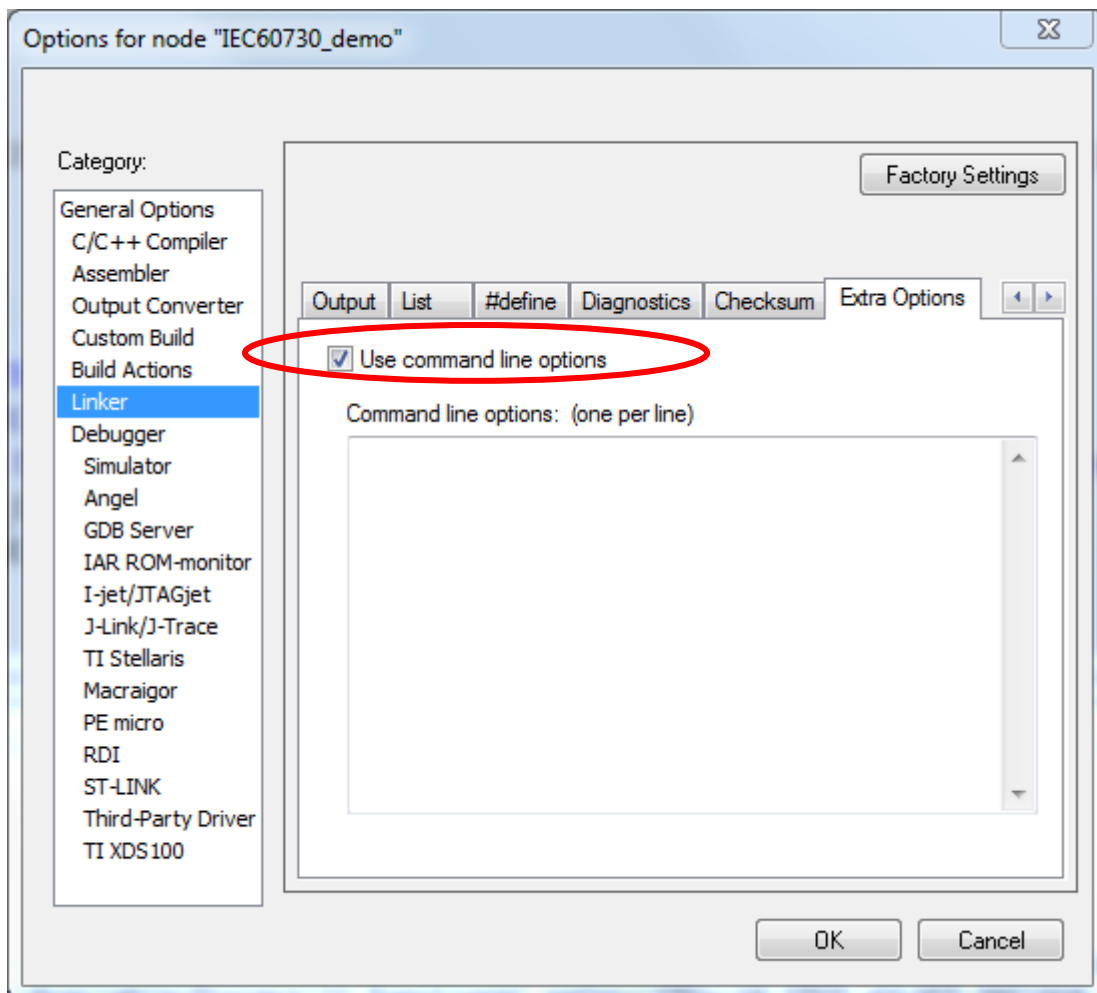
8 Appendix

8.1 CRC code making method

The method to make CRC code to use in .4.1 CPU Register Test, follows is example of IAR Embedded Workbench. Please refer to IAR's manual for details (IAR Technical Note 65473 – IELFTOOL Checksum – Basic actions).

8.1.1 Start of the Command-Line

Click "Project"→"Options"→"Linker"→"Extra options" tabs, then check the "Use command line options".



8.1.2 Input the command

1. "--place_holder" command

"--place_holder" is used that make CRC code and a section in ROM. If input the following command, to set the size of section in 4byte and the alignment in 1.

```
--place_holder __checksum,4,.checksum,1
```

2. "--fill" command

The unused area of the target area needs to fill with optional value making the CRC code. Therefore, use "--fill" command. If input the following command, 0x00000000-0x00003FFF is filled with 0xFF.

```
--fill 0xFF;0x0000-0x3FFF
```

If input the following command, 0x00000000-0x00003FFF, 0x5000-0x5FFF and 0x6500-0x6FFF are filled with 0xFF.

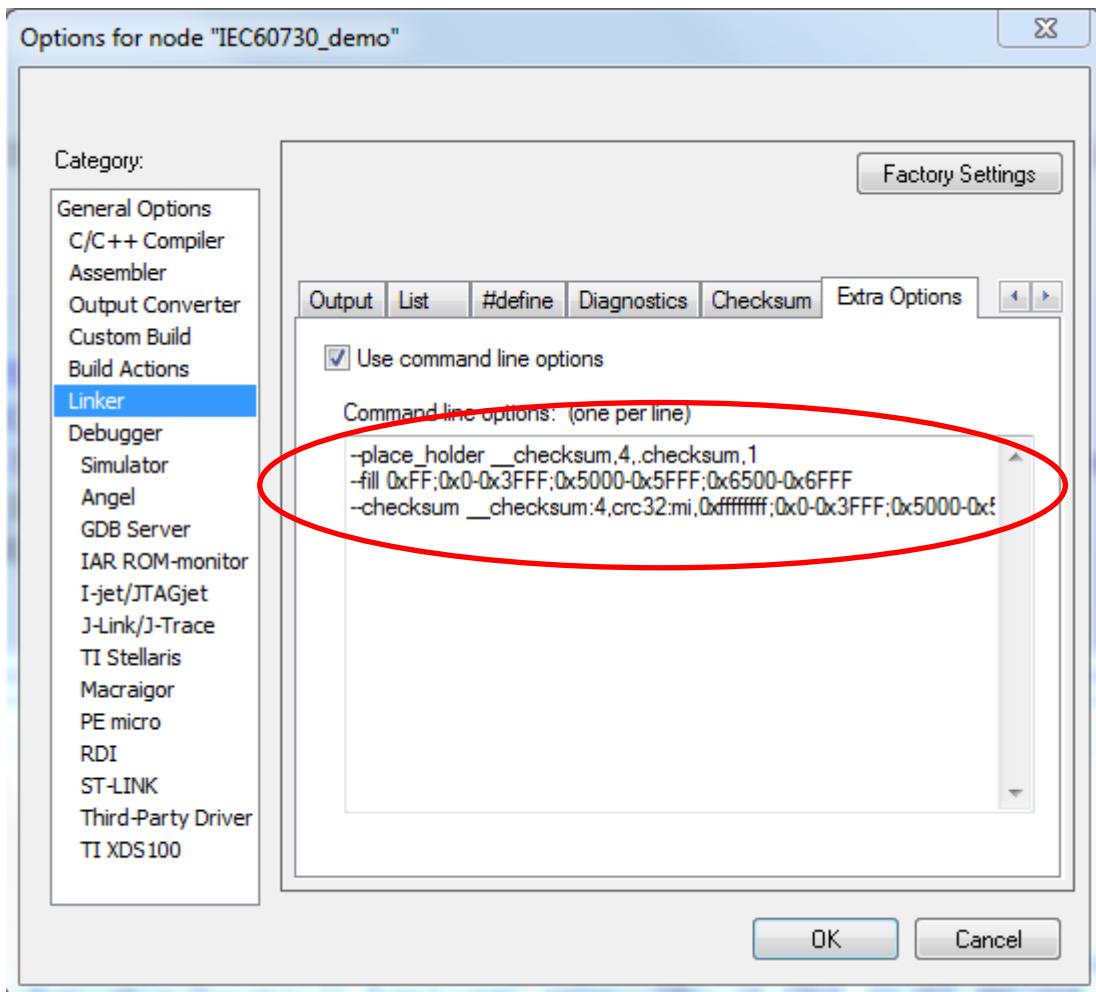
```
--fill 0xFF;0x0-0x3FFF;0x5000-0x5FFF;0x6500-0x6FFF
```

3. "--checksum" command

Set algorithm of CRC. If input the following command, you can set items as follow. The CRC code is stored in the symbol name "__checksum", the CRC code size is 4byte, the algorithm is CRC32, calculation is LSB first, CRC code is initialized by 0xFFFFFFFF, 0x00000000-0x00003FFF, 0x5000-0x5FFF and 0x6500-x6FFF are filled with 0xFF.

```
--checksum  
__checksum:4,crc32:mi,0xffffffff;0x0-0x3FFF;0x5000-0x5FFF;0x6500-0x6FFF
```

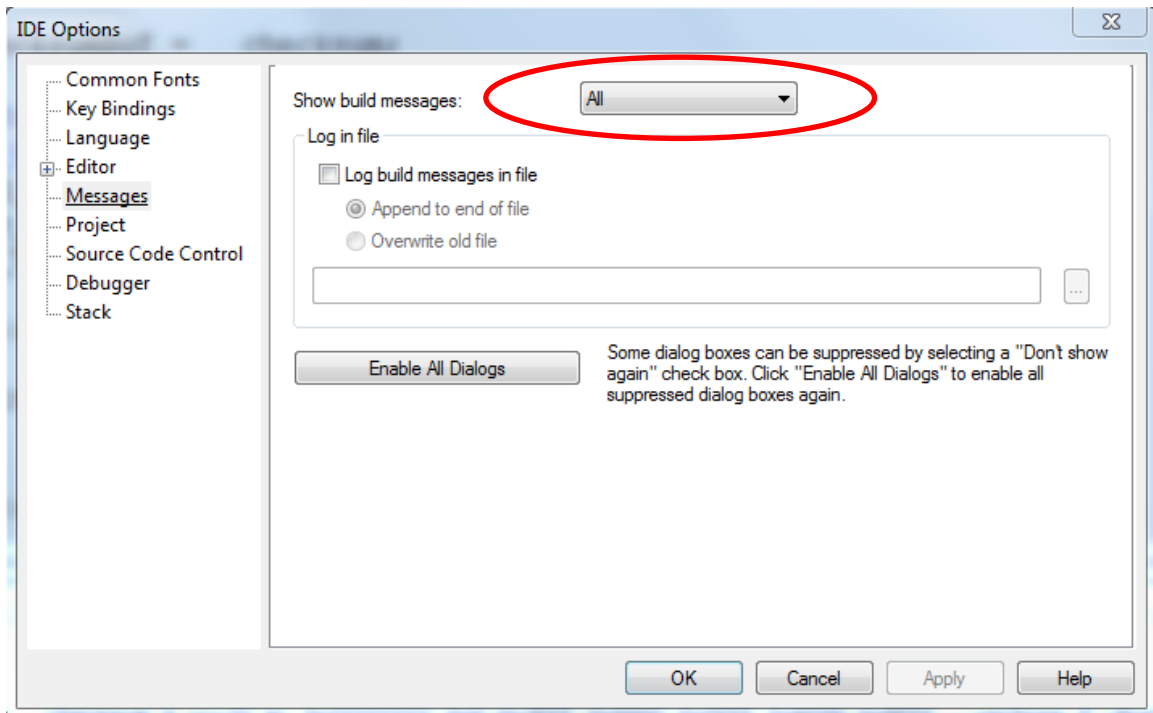
If input the command mentioned above (1, 2, and 3), close the window by clicking the "OK".



8.1.3 Setting of build messages to display in the message window

If set the following contents, you can display build messages at the time of make to the message window.

Click "Tools"→"Options"→"Messages" tabs, then select the "All" from the combo box of "Show build messages". Finally, close the window by clicking the "OK".



8.1.4 Setting of the Linker configuration file

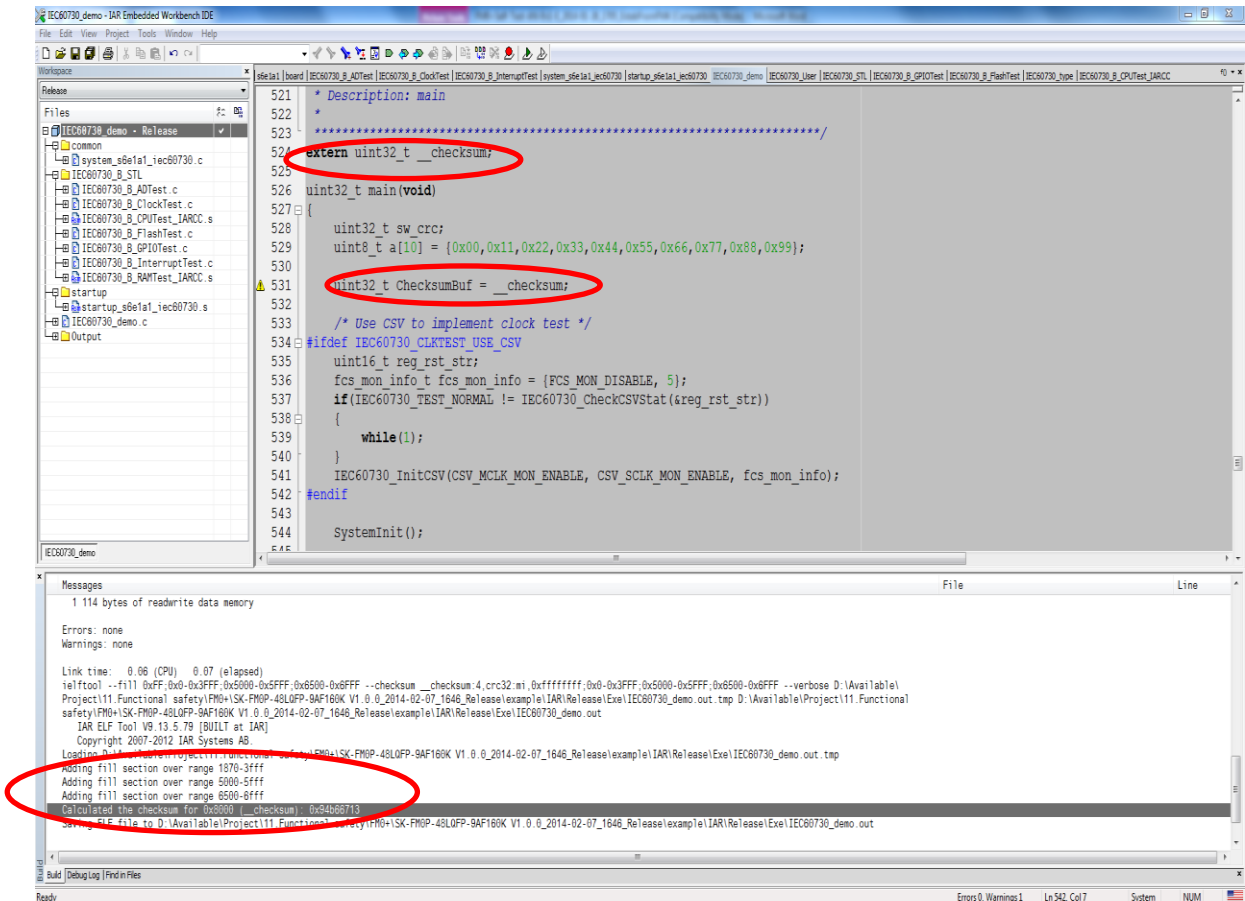
Add settings to the Linker configuration file to store CRC code in Flash. In the case of debug mode, you must use "S6E1A11x0A_ram.icf" file. In the case of release mode, you must use "S6E1A11x0A.icf" file.

Configuring the CRC code to store at address 0x8000, please add the commands below:

```
define symbol __ICFEDIT_checksum_start__ = 0x00008000;
place at address mem: __ICFEDIT_checksum_start__ { readonly section .checksum };
```

8.1.5 Making CRC code

Confirm that the CRC code was made after make.



9 Content of Table and Figure

Figure 3-1: FM0+ IEC60730 Class B STL Block Diagram.....	10
Figure 4-1: Test 1 Register.....	13
Figure 4-2: PC Test Flow Chart.....	15
Figure 4-3: Interrupt Test Block Diagram	17
Figure 4-4: Clock Test Block Diagram.....	20
Figure 4-5: Clock Counter Flowchart	21
Figure 4-6: Clock Test Flowchart	22
Figure 4-7: Clock Main Loop Monitor Flowchart.....	23
Figure 4-8: Clock Failure Detection Block Diagram.....	24
Figure 4-9: Anomalous Frequency Detection Block Diagram.....	24
Figure 4-10: IEC60730_InitCSV Flow Chart.....	25
Figure 4-11: IEC60730_CheckCSVStat Flow Chart	26
Figure 4-12: CRC test by communication	32
Figure 4-13: Software CRC16 Generation Source Code	33
Figure 4-14: CRC16 table	34
Figure 4-15: Software CRC32 Generation Source Code	35
Figure 4-16: CRC32 table	36
Figure 4-17: Test 1 Word with Checkerboard Method	39
Figure 4-18: IO Function Configuration	41
Figure 4-19: IO Input/Output Test Flowchart.....	42
Figure 4-20: AD Test Flowchart.....	44
Figure 5-1: Project Structure	49
Figure 5-2: Reset Handler Sample Code.....	49
Figure 5-3: Main Function Sample Code	53
Figure 5-4: Dual Timer ISR	54
Figure 5-5: Watch Counter ISR.....	54
Figure 5-6: Reload Timer ISR	55
Figure 5-7: Reload Timer ISR	55



FM0+ IEC60730 CLASS B SELF-TEST LIBRARY
Chapter 9 Content of Table and Figure

Table 1-1: FM0+ Product List.....	7
Table 2-1: FM0+ IEC60730 STL Test Items.....	8
Table 4-1: Cotex-M0+ Register List	12
Table 5-1: IO Input/Output Test Flowchart	48
Table 6-1: STL API Performance.....	57