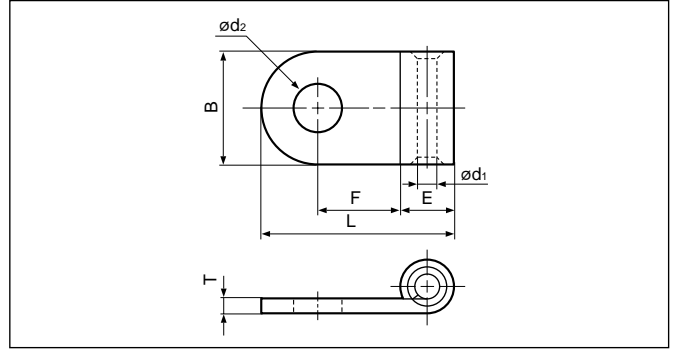


Solderless terminals



FLAG



File No.: E42024 LR20812

Applicable Wire AWG#(mm ²)	Stud size		Part No.	Standard	Dimensions mm (in.)							Tool No.							Qty/box									
	American	Metric			ød ₂	B	L	F	E	ød ₁	T	YG-2216	YG-1614	YG-1210	YG-8S	YG-14S	YA-1	YA-2		YA-4	YA-5	YF-1, E-4+	YEG-150					
22 to 16 (0.25 to 1.65)	5-6	3.5	FG1.25-S3		3.7 (.146)	8.0 (.315)	14.3 (.563)	7.0 (.276)	3.4 (.134)	1.7 (.067)	0.8 (.031)	0				0	0	0				1,000						
	8	4	FG1.25-S4		4.3 (.169)	8.0 (.315)	14.3 (.563)	7.0 (.276)																				
	8	4	FG1.25-4		4.3 (.169)	9.6 (.378)	15.5 (.610)	7.4 (.291)																				
	10	5	FG1.25-S5		5.3 (.209)	8.0 (.315)	14.3 (.563)	7.0 (.276)																				
	10	5	FG1.25-5		5.3 (.209)	9.6 (.378)	15.5 (.610)	7.4 (.291)																				
	1/4	6	FG1.25-6		6.4 (.252)	9.6 (.378)	15.5 (.610)	7.4 (.291)																				
16 to 14 (1.04 to 2.63)	3-4	3	FG2-S3		3.2 (.126)	7.6 (.299)	13.2 (.520)	5.4 (.213)	4.1 (.161)	2.3 (.091)	0.8 (.031)	0				0	0	0				500						
	3-4	3	FG2-3		3.2 (.126)	9.6 (.378)	16.2 (.638)	7.4 (.291)																				
	5-6	3.5	FG2-3.7		3.7 (.146)	9.6 (.378)	16.2 (.638)	7.4 (.291)																				
	8	4	FG2-S4		4.3 (.169)	7.6 (.299)	13.2 (.520)	5.4 (.213)																				
	8	4	FG2-4		4.3 (.169)	9.6 (.378)	16.2 (.638)	7.4 (.291)																				
	10	5	FG2-5		5.3 (.209)	9.6 (.378)	16.2 (.638)	7.4 (.291)																				
	1/4	6	FG2-6		6.4 (.252)	9.6 (.378)	16.2 (.638)	7.4 (.291)																				
12 to 10 (2.63 to 6.64)	5-6	3.5	FG5.5-3.5		3.7 (.146)	9.6 (.378)	17.8 (.701)	7.4 (.291)	5.6 (.220)	3.4 (.134)	1.0 (.039)	0				0	0	0				500						
	8	4	FG5.5-4		4.3 (.169)	9.6 (.378)	17.8 (.701)	7.4 (.291)																				
	10	5	FG5.5-5		5.3 (.209)	9.6 (.378)	17.8 (.701)	7.4 (.291)																				
	1/4	6	FG5.5-6		6.4 (.252)	9.6 (.378)	17.8 (.701)	7.4 (.291)																				
8 (6.64 to 10.52)	10	5	FG8-5		5.3 (.209)	12.6 (.496)	23.0 (.906)	9.5 (.374)	7.1 (.280)	4.5 (.177)	1.2 (.047)	0				0	0	0				250						
	1/4	6	FG8-6		6.4 (.252)	12.6 (.496)	23.0 (.906)	9.5 (.374)																				
	5-16	8	FG8-8		8.4 (.331)	15.5 (.610)	28.5 (1.122)	13.6 (.535)																				
	3/8	10	FG8-10		10.5 (.413)	15.5 (.610)	28.5 (1.122)	13.6 (.535)																				
6 (10.52 to 16.78)	10	5	FG14-5		5.3 (.209)	12.6 (.496)	25.0 (.984)	9.7 (.382)	9.0 (.354)	5.8 (.228)	1.5 (.059)	0				0	0	0				200						
	1/4	6	FG14-6		6.4 (.252)	12.6 (.496)	25.0 (.984)	9.7 (.382)																				
	5/16	8	FG14-8		8.4 (.331)	15.8 (.622)	30.5 (1.201)	13.5 (.531)																				
	3/8	10	FG14-10		10.5 (.413)	15.8 (.622)	30.5 (1.201)	13.5 (.531)																				
4 (16.78 to 26.66)	10	5	FG22-5		5.3 (.209)	14.0 (.551)	28.0 (1.102)	9.6 (.378)	11.5 (.453)	7.7 (.303)	1.8 (.071)	0										100						
	1/4	6	FG22-6		6.4 (.252)	14.0 (.551)	28.0 (1.102)	9.6 (.378)																				
	5/16	8	FG22-8		8.4 (.331)	17.5 (.689)	34.0 (1.339)	13.8 (.543)																				
	3/8	10	FG22-10		10.5 (.413)	17.5 (.689)	34.0 (1.339)	13.8 (.543)																				

Note:1) The part numbers indicated in the above table are for products with a brazed seam.
 When ordering products with a nominal size of 1.25 to 5.5 with a butted seam, add the prefix "WS" to the part number (ex. FG2-4 → **WSFG2-4**).
 2) Delivery lead times may vary depending on the product. Contact JST for details.

