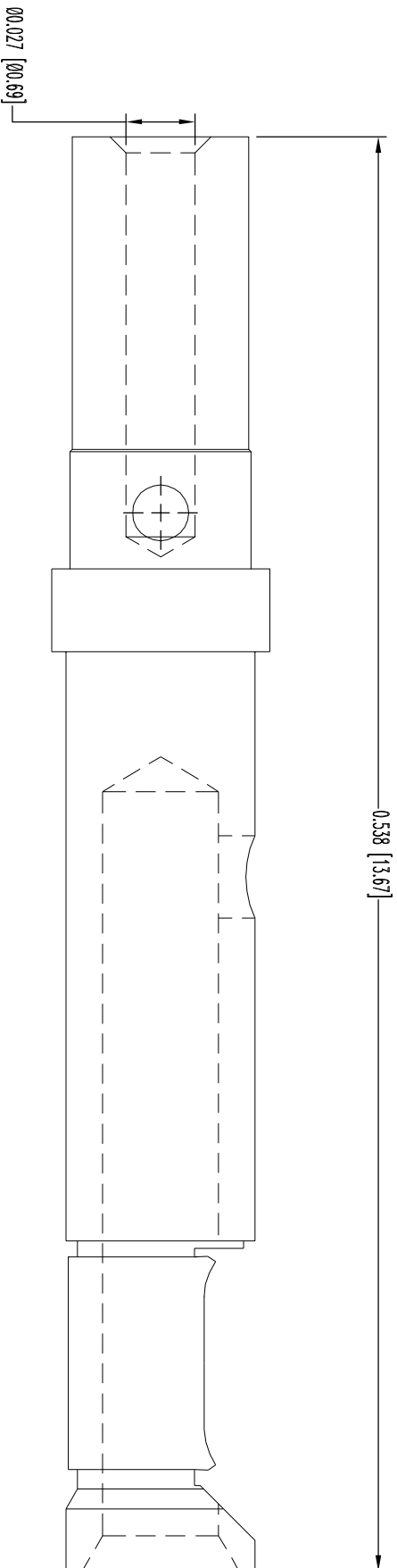


THIS DRAWING CONTAINS INFORMATION PROPRIETARY TO POSITRONIC IND. INC. ANY REPRODUCTION, DISCLOSURE OR USE OF THIS DRAWING IS EXPRESSLY PROHIBITED WITHOUT THE WRITTEN CONSENT OF POSITRONIC IND. INC. MAY OTHERWISE AGREE IN WRITING.

SK18294

DATE	REV	REVISION RECORD	APP	DR	CK
12-14-15	NC	ECO 49051	COLM	AP	CV



NOTES:

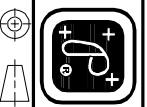
1. MATERIALS:

CONTACT: PRECISION MACHINED COPPER ALLOY, GOLD FLASH OVER NICKEL PLATE.

SPRING CLIP: BERYLLIUM COPPER, GOLD FLASH OVER NICKEL PLATE.

2. CONTACTS ARE COMPLIANT TO THE CURRENT ROHS DIRECTIVE.

3. DIMENSIONS ARE IN INCHES [MILLIMETERS].



POSITRONIC INDUSTRIES INC.
 SPRINGFIELD, MISSOURI 65801

DECIMAL TOL. ± 0.015 [0.38]	ANGULAR TOL. ± 5°	DATE 12-14-15	DRAWING NUMBER SK18294	REV. NC
TITLE FC6026D2/AA		DRAWN BY RD		
SCALE N.T.S.		APPROVED BY AP		
DRAWING NUMBER SK18294		DATE 12-14-15		