

## SUMMARY

### # Wires

Low voltage 1

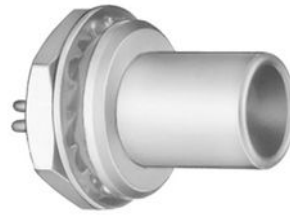


Image is for illustrative purpose only

Series 3S  
Termination type Male solder  
IP rating 50  
AWG wire size 18.00 - 10.00  
Cable Ø 0.00 - 0.00 mm  
Status active  
Matching parts [PCA.3S.140.CTLC10](#)

### Download

[Request a quote](#)

[Eplan](#)

[Catalog](#)

## TECHNICAL DETAILS

### Mechanics

Shell Style/Model FAA\*: Fixed plug, non-latching, nut fixing  
Keying Circular, male  
Housing Material Brass (chrome plated [SAE AMS 2460]) shell and collet nut, nickel plated [SAE AMS QQ N 290] brass latch sleeve and mid pieces  
Weight 30.04 g

### Performance

Configuration 3S.140 : 1 Low Voltage  
Insulator T: PTFE  
Rated Current 43 Amps

### Specifications

Contact Type: Solder  
V<sub>test</sub> (contact-shell): 2400 V (AC), 3300 V (DC)  
V<sub>test</sub> (contact-contact): 2400 V (AC), 3300 V (DC)  
□

### Others

Endurance (Shell): 5000 mating cycles

LEMO products and services are provided "as is". LEMO makes no warranties or representations with regard to LEMO product & services or use of them, express, implied or statutory, including for accuracy, completeness, or security. The user is fully responsible for his products and applications using LEMO components.

Temp (min / max): -55° C / +250° C  
 Humidity (max): <=95% [at 60 deg C /140 F]  
 Vibration: 15 g [10 Hz - 2000 Hz]  
 Shock Resistance: 100 g [ 6 ms]  
 Climatical Category: 50/175/21  
 Shielding (min): 75 dB (10 MHz)  
 Shielding (min): 40 dB (1 GHz)  
 Salt Spray Corrosion: >144 hr

## DRAWINGS

### Draws



### Dimensions

	A	B	E	L	M	M	S1	e
mm.	22	25	4	31	17	17	16.5	M18x1.0
in.	0,87	0,98	0,16	1,22	0,67	0,67	0,65	

## RECOMMENDED BY LEMO

### Tools

### Cables

*LEMO products and services are provided "as is". LEMO makes no warranties or representations with regard to LEMO product & services or use of them, express, implied or statutory, including for accuracy, completeness, or security. The user is fully responsible for his products and applications using LEMO components.*