

ET60T-D04-3-08-A04-S-R1-S

RIGHT-ANGLE POWER/SIGNAL HEADER

Mates with:
ET60S

SPECIFICATIONS

For complete specifications and recommended PCB layouts see www.samtec.com?ET60T

Insulator Material:
Black LCP

Terminal Material:
Signal: Phosphor Bronze
Power: Copper Alloy

Plating:
Au or Sn over
50 μ" (1.27 μm) Ni

Current Rating:
Power: 60 A max per blade
(2 pins powered)
Signal: 2.8 A max
(6 pins powered)

Operating Temp Range:
-40 °C to +105 °C

Voltage Rating:
250 V max

RoHS Compliant:
Yes

PROCESSING

Lead-Free Solderable:
Yes

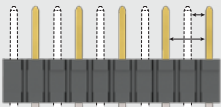
RECOGNITIONS

For complete scope of recognitions see www.samtec.com/quality



FILE NO. E111594

CREEPAGE AND CLEARANCE



Selectively loading contacts achieves customer specific creepage and clearance requirements.
Contact asp@samtec.com

Notes:

Some lengths, styles and options are non-standard, non-returnable.

EXTreme Ten60Power™ is a trademark of Molex Incorporated and is dual sourced by Molex®

ET60T

POWER POSITIONS (LEFT)

ROWS

SIGNAL POSITIONS

-AXX

= AC Power Positions
(-02, -03, -04, -05, -06)

-DXX

= DC Power Positions
(-02, -03, -04, -05, -06, -07, -08, -09, -10)

-SXX*

= Split Power

-000

= No Power

-0

= No Signal

-3

= 3 Rows

-5

= 5 Rows

-00

= No Signal

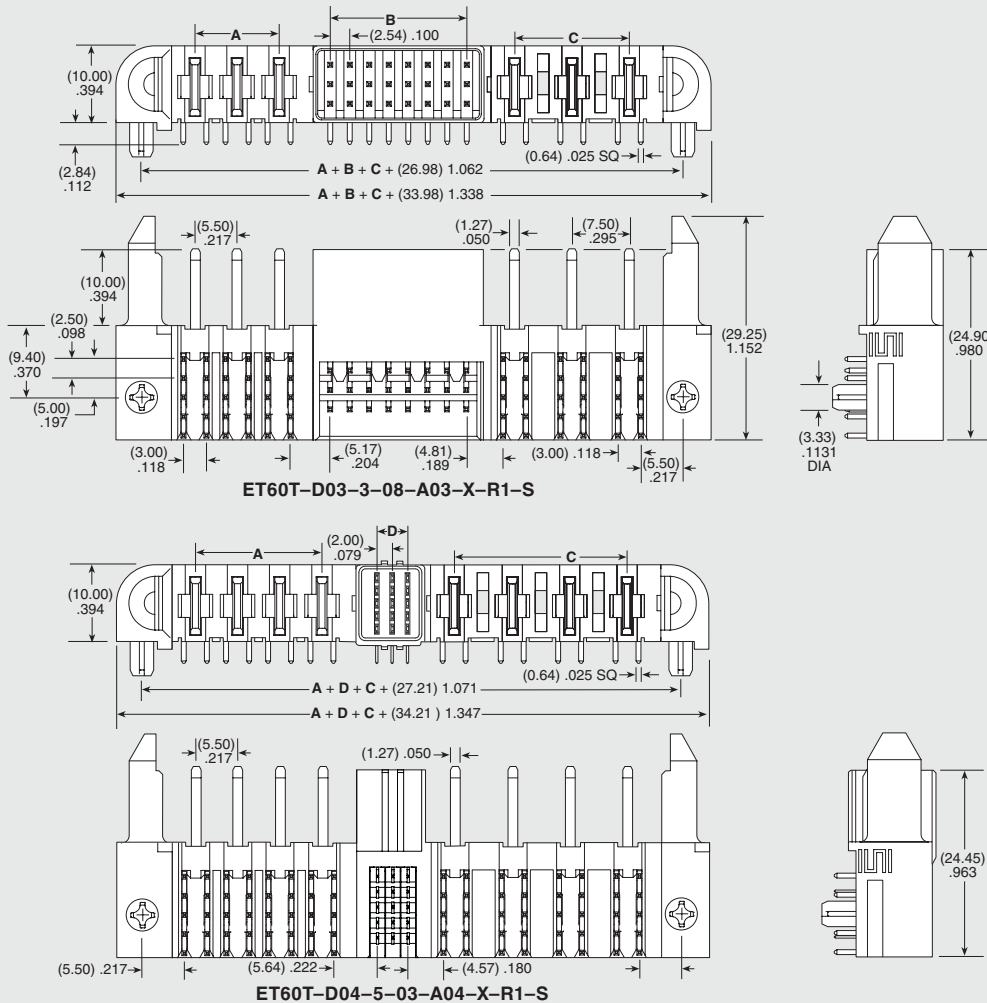
-08

= 3 Row only

-01, -02, -03, -04,
-05, -06, -07, -08
= 5 Row only

Note:

-SXX* & -T* are Preliminary

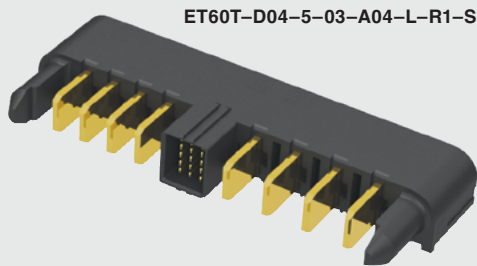


Due to technical progress, all designs, specifications and components are subject to change without notice.

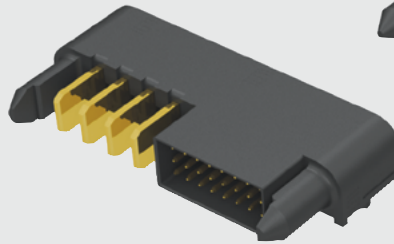
WWW.SAMTEC.COM

All parts within this catalog are built to Samtec's specifications.

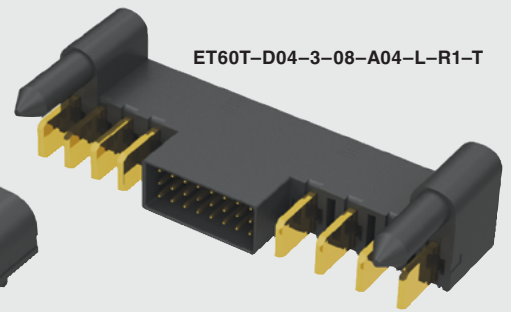
Customer specific requirements must be approved by Samtec and identified in a Samtec customer-specific drawing to apply.



ET60T-D04-5-03-A04-L-R1-S



ET60T-D04-3-08-000-S-R1-S



ET60T-D04-3-08-A04-L-R1-T

ET60T SERIES

POWER POSITIONS (RIGHT)

- AXX**
= AC Power Positions
(-02, -03, -04, -05, -06)
- DXX**
= DC Power Positions
(-02, -03, -04, -05, -06, -07, -08, -09, -10)
- SXX***
= Split Power
- 000**
= No Power

Note:
-SXX* & -T* are Preliminary

PLATING

- L**
= 10 μ" (0.25 μm) Gold on contact,
Matte Tin on tail
(Not available for 5 rows)
- S**
= 30 μ" (0.76 μm) Gold on contact,
Matte Tin on tail

TAIL

- R1**
= Right-angle
Through-hole
(Use with
(1.60 mm) .062"
thick card)

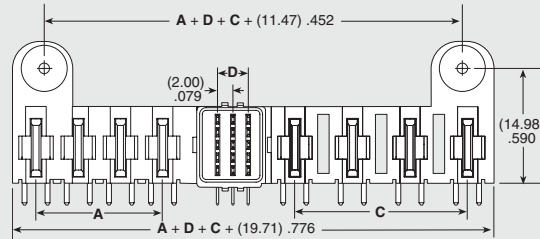
GUIDE POST

- (Required callout)
- S**
= Side
Guide Post
- T***
= Top
Guide Post

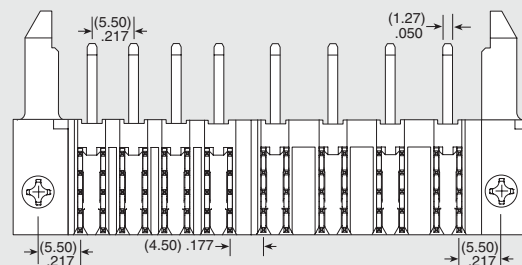
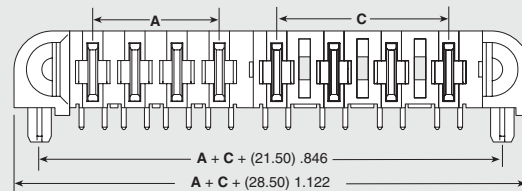
OPTION

- H**
= Hot Swap
(Leave blank for
no Hot Swap)

POWER POSITIONS (LEFT)	POWER POSITIONS (RIGHT)	A DC POWER	C AC POWER
-02	-02	(5.50) .217	(7.50) .295
-03	-03	(11.00) .433	(15.00) .591
-04	-04	(16.50) .650	(22.50) .886
-05	-05	(22.00) .866	(30.00) 1.181
-06	-06	(27.50) 1.083	(37.50) 1.476
-07	-07	(33.00) 1.299	N/A
-08	-08	(38.50) 1.516	N/A
-09	-09	(44.00) 1.732	N/A
-10	-10	(49.50) 1.949	N/A



ET60T-D04-5-03-A04-X-R1-T



ET60T-D04-0-00-A04-X-R1-S

SIGNAL POSITIONS PER ROW (3 Row)	B	SIGNAL POSITIONS PER ROW (5 Row)	D
-08	(17.78) .700	-01	N/A
		-02	(2.00) .079
		-03	(4.00) .157
		-04	(6.00) .236
		-05	(8.00) .315
		-06	(10.00) .394
		-07	(12.00) .472
		-08	(14.00) .551

Due to technical progress, all designs, specifications and components are subject to change without notice.