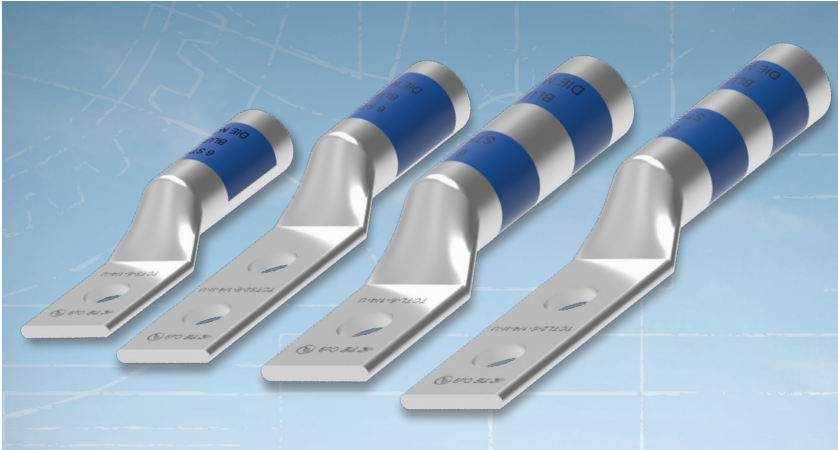


COPPER COMPRESSION LUGS

Copper Compression Lugs



TE Connectivity's (TE) compression terminal connectors are ideal for secondary distribution up to 35 kV. Copper compression terminal connectors are available to accommodate a range of cable sizes from #10 AWG to 1000 kcmil copper and offered in one- or two-hole terminal.

Use for terminating solid, compact and concentric stranded, class B conductors with either a standard or long barrel version and meet the requirements of UL 486.

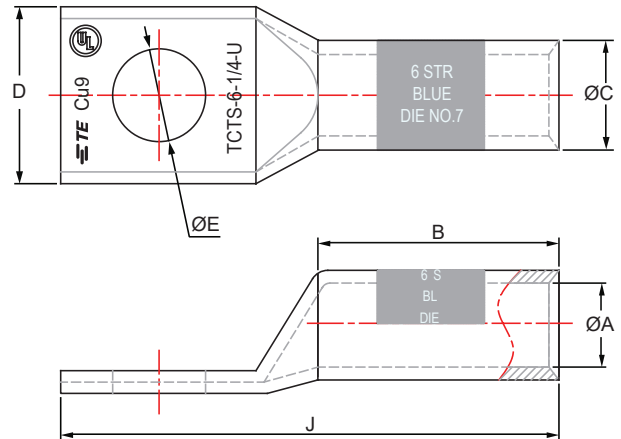
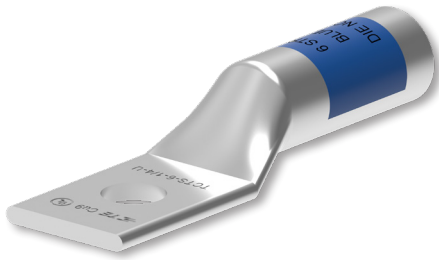
Compression crimping forms the terminal and conductor into a strong, almost homogeneous unit, producing excellent conductivity, low temperature rise, and outstanding resistance to oxidation and corrosion.

Compression of the terminal barrel creates a highly reliable connection that enables connector to perform well and at a lower temperature than the conductor during operation.

Key Features

- Uses industry-standard tooling for simple installation
- Industry-standard color coding system simplifies die selection
- One-piece, seamless construction from electrolytic tough pitch (ETP) copper for superior electrical performance and mechanical operation
- Closed barrel transition design for protection from moisture and contaminants
- Tin-plated for corrosion resistance and durability, and tempered for easy crimping

Copper Compression Lugs



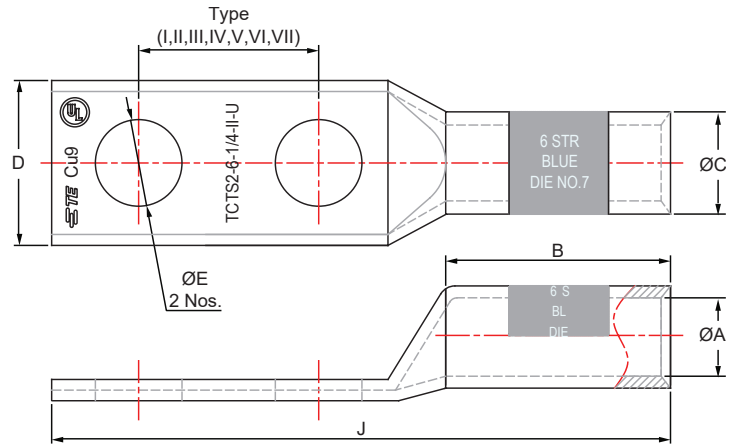
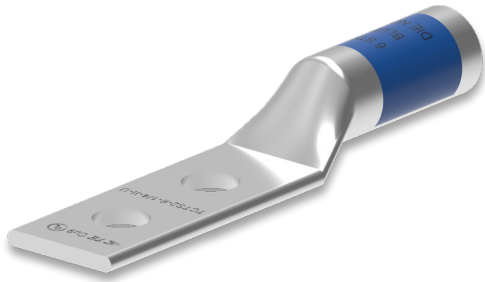
Standard Barrel - One Hole

| TE Product Code | Conductor AWG/MCM | Dimensions mm (In) | | | | | Color Code |
|-----------------|-------------------|--------------------|---------------|-------------------|----------------|------------------|------------|
| | | E (Stud Hole) | A (Barrel ID) | B (Barrel Length) | D (Palm Width) | J (Total Length) | |
| TCTS-3/0-1/2-U | 3/0 | 1/2 | 12.4 (0.49) | 25.4 (1.00) | 23.1 (0.91) | 64.5 (2.54) | Orange |
| TCTS-4/0-1/4-U | 4/0 | 1/4 | 14.2 (0.56) | 22.4 (0.88) | 25.4 (1.00) | 50.8 (2.00) | Purple |
| TCTS-4/0-5/16-U | 4/0 | 5/16 | 14.2 (0.56) | 22.4 (0.88) | 25.4 (1.00) | 55.9 (2.20) | Purple |
| TCTS-4/0-3/8-U | 4/0 | 3/8 | 14.2 (0.56) | 22.4 (0.88) | 25.4 (1.00) | 55.9 (2.20) | Purple |
| TCTS-4/0-1/2-U | 4/0 | 1/2 | 14.2 (0.56) | 22.4 (0.88) | 25.4 (1.00) | 62.5 (2.46) | Purple |
| TCTS-4/0-3/4-U | 4/0 | 3/4 | 14.2 (0.56) | 22.4 (0.88) | 26.7 (1.05) | 55.9 (2.20) | Purple |
| TCTS-250-1/4-U | 250 | 1/4 | 15.1 (0.59) | 26.9 (1.06) | 27.7 (1.09) | 55.9 (2.20) | Yellow |
| TCTS-250-5/16-U | 250 | 5/16 | 15.1 (0.59) | 26.9 (1.06) | 27.7 (1.09) | 55.9 (2.20) | Yellow |
| TCTS-250-3/8-U | 250 | 3/8 | 15.1 (0.59) | 26.9 (1.06) | 27.7 (1.09) | 61.5 (2.42) | Yellow |
| TCTS-250-1/2-U | 250 | 1/2 | 15.1 (0.59) | 26.9 (1.06) | 27.7 (1.09) | 67.8 (2.67) | Yellow |
| TCTS-300-5/16-U | 300 | 5/16 | 16.5 (0.65) | 26.2 (1.03) | 30.5 (1.20) | 58.4 (2.30) | White |
| TCTS-300-3/8-U | 300 | 3/8 | 16.5 (0.65) | 26.2 (1.03) | 30.5 (1.20) | 58.4 (2.30) | White |
| TCTS-300-1/2-U | 300 | 1/2 | 16.5 (0.65) | 26.2 (1.03) | 30.5 (1.20) | 68.6 (2.70) | White |
| TCTS-300-5/8-U | 300 | 5/8 | 16.5 (0.65) | 26.2 (1.03) | 30.5 (1.20) | 73.7 (2.90) | White |
| TCTS-300-7/8-U | 300 | 7/8 | 16.5 (0.65) | 26.2 (1.03) | 30.5 (1.20) | 86.4 (3.40) | White |
| TCTS-350-3/8-U | 350 | 3/8 | 17.8 (0.70) | 26.9 (1.06) | 32.8 (1.29) | 63.5 (2.50) | Red |
| TCTS-350-1/2-U | 350 | 1/2 | 17.8 (0.70) | 32.8 (1.29) | 32.8 (1.29) | 69.9 (2.75) | Red |
| TCTS-350-5/8-U | 350 | 5/8 | 17.8 (0.70) | 32.8 (1.29) | 32.8 (1.29) | 76.2 (3.00) | Red |
| TCTS-350-7/8-U | 350 | 7/8 | 17.8 (0.70) | 32.8 (1.29) | 32.8 (1.29) | 101.6 (4.00) | Red |
| TCTS-400-3/8-U | 400 | 3/8 | 19.3 (0.76) | 30.2 (1.19) | 35.1 (1.38) | 68.6 (2.70) | Blue |
| TCTS-400-1/2-U | 400 | 1/2 | 19.3 (0.76) | 30.2 (1.19) | 35.6 (1.40) | 74.4 (2.93) | Blue |
| TCTS-400-5/8-U | 400 | 5/8 | 19.3 (0.76) | 30.2 (1.19) | 35.1 (1.38) | 81.3 (3.20) | Blue |
| TCTS-400-7/8-U | 400 | 7/8 | 19.3 (0.76) | 30.2 (1.19) | 35.6 (1.40) | 91.4 (3.60) | Blue |
| TCTS-500-3/8-U | 500 | 3/8 | 21.1 (0.83) | 32.3 (1.27) | 39.1 (1.54) | 73.7 (2.90) | Brown |
| TCTS-500-1/2-U | 500 | 1/2 | 21.1 (0.83) | 32.3 (1.27) | 39.1 (1.54) | 79.2 (3.12) | Brown |
| TCTS-500-5/8-U | 500 | 5/8 | 21.1 (0.83) | 32.3 (1.27) | 39.1 (1.54) | 86.4 (3.40) | Brown |
| TCTS-500-3/4-U | 500 | 3/4 | 21.1 (0.83) | 32.3 (1.27) | 39.1 (1.54) | 91.4 (3.60) | Brown |
| TCTS-500-7/8-U | 500 | 7/8 | 21.1 (0.83) | 32.3 (1.27) | 39.1 (1.54) | 96.5 (3.80) | Brown |
| TCTS-600-1/2-U | 600 | 1/2 | 23.4 (0.92) | 35.1 (1.38) | 43.4 (1.71) | 83.8 (3.30) | Green |
| TCTS-600-5/8-U | 600 | 5/8 | 23.4 (0.92) | 35.1 (1.38) | 43.4 (1.71) | 94.0 (3.70) | Green |
| TCTS-750-1/2-U | 750 | 1/2 | 26.2 (1.03) | 36.1 (1.42) | 48.0 (1.89) | 86.6 (3.41) | Black |
| TCTS-750-5/8-U | 750 | 5/8 | 26.2 (1.03) | 36.1 (1.42) | 48.0 (1.89) | 93.2 (3.67) | Black |
| TCTS-750-7/8-U | 750 | 7/8 | 26.2 (1.03) | 36.1 (1.42) | 48.0 (1.89) | 104.1 (4.10) | Black |
| TCTS-1000-1/2-U | 1000 | 1/2 | 29.7 (1.17) | 41.9 (1.65) | 55.6 (2.19) | 101.6 (4.00) | White |
| TCTS-1000-5/8-U | 1000 | 5/8 | 29.7 (1.17) | 41.9 (1.65) | 55.6 (2.19) | 101.6 (4.00) | White |
| TCTS-1000-1-U | 1000 | 1.0 | 29.7 (1.17) | 41.9 (1.65) | 55.6 (2.19) | 120.1 (4.73) | White |

Copper Compression Lugs

| Standard Barrel - One Hole | | | | | | | |
|----------------------------|-------------------|--------------------|---------------|-------------------|----------------|------------------|------------|
| TE Product Code | Conductor AWG/MCM | Dimensions mm (In) | | | | | Color Code |
| | | E (Stud Hole) | A (Barrel ID) | B (Barrel Length) | D (Palm Width) | J (Total Length) | |
| TCTS-3/0-1/2-U | 3/0 | 1/2 | 12.4 (0.49) | 25.4 (1.00) | 23.1 (0.91) | 64.5 (2.54) | Orange |
| TCTS-4/0-1/4-U | 4/0 | 1/4 | 14.2 (0.56) | 22.4 (0.88) | 25.4 (1.00) | 50.8 (2.00) | Purple |
| TCTS-4/0-5/16-U | 4/0 | 5/16 | 14.2 (0.56) | 22.4 (0.88) | 25.4 (1.00) | 55.9 (2.20) | Purple |
| TCTS-4/0-3/8-U | 4/0 | 3/8 | 14.2 (0.56) | 22.4 (0.88) | 25.4 (1.00) | 55.9 (2.20) | Purple |
| TCTS-4/0-1/2-U | 4/0 | 1/2 | 14.2 (0.56) | 22.4 (0.88) | 25.4 (1.00) | 62.5 (2.46) | Purple |
| TCTS-4/0-3/4-U | 4/0 | 3/4 | 14.2 (0.56) | 22.4 (0.88) | 26.7 (1.05) | 55.9 (2.20) | Purple |
| TCTS-250-1/4-U | 250 | 1/4 | 15.1 (0.59) | 26.9 (1.06) | 27.7 (1.09) | 55.9 (2.20) | Yellow |
| TCTS-250-5/16-U | 250 | 5/16 | 15.1 (0.59) | 26.9 (1.06) | 27.7 (1.09) | 55.9 (2.20) | Yellow |
| TCTS-250-3/8-U | 250 | 3/8 | 15.1 (0.59) | 26.9 (1.06) | 27.7 (1.09) | 61.5 (2.42) | Yellow |
| TCTS-250-1/2-U | 250 | 1/2 | 15.1 (0.59) | 26.9 (1.06) | 27.7 (1.09) | 67.8 (2.67) | Yellow |
| TCTS-300-5/16-U | 300 | 5/16 | 16.5 (0.65) | 26.2 (1.03) | 30.5 (1.20) | 58.4 (2.30) | White |
| TCTS-300-3/8-U | 300 | 3/8 | 16.5 (0.65) | 26.2 (1.03) | 30.5 (1.20) | 58.4 (2.30) | White |
| TCTS-300-1/2-U | 300 | 1/2 | 16.5 (0.65) | 26.2 (1.03) | 30.5 (1.20) | 68.6 (2.70) | White |
| TCTS-300-5/8-U | 300 | 5/8 | 16.5 (0.65) | 26.2 (1.03) | 30.5 (1.20) | 73.7 (2.90) | White |
| TCTS-300-7/8-U | 300 | 7/8 | 16.5 (0.65) | 26.2 (1.03) | 30.5 (1.20) | 86.4 (3.40) | White |
| TCTS-350-3/8-U | 350 | 3/8 | 17.8 (0.70) | 26.9 (1.06) | 32.8 (1.29) | 63.5 (2.50) | Red |
| TCTS-350-1/2-U | 350 | 1/2 | 17.8 (0.70) | 32.8 (1.29) | 32.8 (1.29) | 69.9 (2.75) | Red |
| TCTS-350-5/8-U | 350 | 5/8 | 17.8 (0.70) | 32.8 (1.29) | 32.8 (1.29) | 76.2 (3.00) | Red |
| TCTS-350-7/8-U | 350 | 7/8 | 17.8 (0.70) | 32.8 (1.29) | 32.8 (1.29) | 101.6 (4.00) | Red |
| TCTS-400-3/8-U | 400 | 3/8 | 19.3 (0.76) | 30.2 (1.19) | 35.1 (1.38) | 68.6 (2.70) | Blue |
| TCTS-400-1/2-U | 400 | 1/2 | 19.3 (0.76) | 30.2 (1.19) | 35.6 (1.40) | 74.4 (2.93) | Blue |
| TCTS-400-5/8-U | 400 | 5/8 | 19.3 (0.76) | 30.2 (1.19) | 35.1 (1.38) | 81.3 (3.20) | Blue |
| TCTS-400-7/8-U | 400 | 7/8 | 19.3 (0.76) | 30.2 (1.19) | 35.6 (1.40) | 91.4 (3.60) | Blue |
| TCTS-500-3/8-U | 500 | 3/8 | 21.1 (0.83) | 32.3 (1.27) | 39.1 (1.54) | 73.7 (2.90) | Brown |
| TCTS-500-1/2-U | 500 | 1/2 | 21.1 (0.83) | 32.3 (1.27) | 39.1 (1.54) | 79.2 (3.12) | Brown |
| TCTS-500-5/8-U | 500 | 5/8 | 21.1 (0.83) | 32.3 (1.27) | 39.1 (1.54) | 86.4 (3.40) | Brown |
| TCTS-500-3/4-U | 500 | 3/4 | 21.1 (0.83) | 32.3 (1.27) | 39.1 (1.54) | 91.4 (3.60) | Brown |
| TCTS-500-7/8-U | 500 | 7/8 | 21.1 (0.83) | 32.3 (1.27) | 39.1 (1.54) | 96.5 (3.80) | Brown |
| TCTS-600-1/2-U | 600 | 1/2 | 23.4 (0.92) | 35.1 (1.38) | 43.4 (1.71) | 83.8 (3.30) | Green |
| TCTS-600-5/8-U | 600 | 5/8 | 23.4 (0.92) | 35.1 (1.38) | 43.4 (1.71) | 94.0 (3.70) | Green |
| TCTS-750-1/2-U | 750 | 1/2 | 26.2 (1.03) | 36.1 (1.42) | 48.0 (1.89) | 86.6 (3.41) | Black |
| TCTS-750-5/8-U | 750 | 5/8 | 26.2 (1.03) | 36.1 (1.42) | 48.0 (1.89) | 93.2 (3.67) | Black |
| TCTS-750-7/8-U | 750 | 7/8 | 26.2 (1.03) | 36.1 (1.42) | 48.0 (1.89) | 104.1 (4.10) | Black |
| TCTS-1000-1/2-U | 1000 | 1/2 | 29.7 (1.17) | 41.9 (1.65) | 55.6 (2.19) | 101.6 (4.00) | White |
| TCTS-1000-5/8-U | 1000 | 5/8 | 29.7 (1.17) | 41.9 (1.65) | 55.6 (2.19) | 101.6 (4.00) | White |
| TCTS-1000-1-U | 1000 | 1.0 | 29.7 (1.17) | 41.9 (1.65) | 55.6 (2.19) | 120.1 (4.73) | White |

Copper Compression Lugs



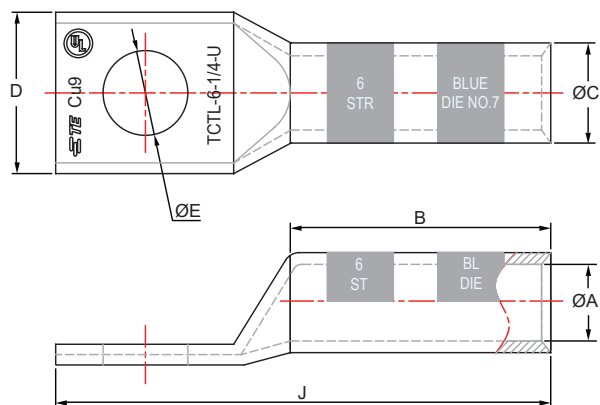
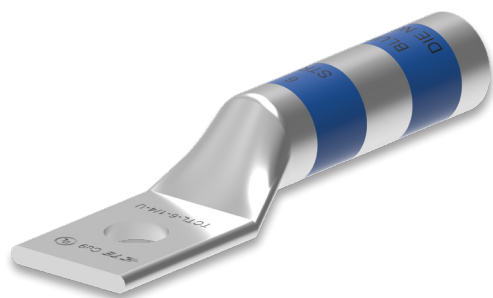
Standard Barrel - Two Hole

| TE Product Code | Conductor AWG/MCM | Dimensions mm (In) | | | | | | | Color Code |
|--------------------|-------------------|--------------------|-------------------|------|---------------|-------------------|----------------|------------------|------------|
| | | E (Stud Hole) | Stud Hole Spacing | Type | A (Barrel ID) | B (Barrel Length) | D (Palm Width) | J (Total Length) | |
| TCTS2-8-10-I-U | 8 | #10 | 0.63 (15.9) | I | 4.4 (0.17) | 11.2 (0.44) | 11.2 (0.44) | 50.0 (1.97) | Red |
| TCTS2-8-1/4-I-U | 8 | 1/4 | 0.63 (15.9) | I | 4.4 (0.17) | 11.2 (0.44) | 11.2 (0.44) | 50.0 (1.97) | Red |
| TCTS2-8-1/4-III-U | 8 | 1/4 | 1.00 (25.4) | III | 4.4 (0.17) | 11.2 (0.44) | 11.2 (0.44) | 61.0 (2.40) | Red |
| TCTS2-8-1/4-II-U | 8 | 1/4 | 0.75 (19.1) | II | 4.4 (0.17) | 11.2 (0.44) | 11.2 (0.44) | 53.2 (2.09) | Red |
| TCTS2-8-3/8-III-U | 8 | 3/8 | 1.00 (25.4) | III | 4.4 (0.17) | 11.2 (0.44) | 14.7 (0.58) | 61.0 (2.40) | Red |
| TCTS2-6-10-I-U | 6 | #10 | 0.63 (15.9) | I | 5.0 (0.20) | 13.7 (0.54) | 11.4 (0.45) | 54.0 (2.13) | Blue |
| TCTS2-6-1/4-I-U | 6 | 1/4 | 0.63 (15.9) | I | 5.0 (0.20) | 13.7 (0.54) | 11.4 (0.45) | 54.0 (2.13) | Blue |
| TCTS2-6-1/4-III-U | 6 | 1/4 | 1.00 (25.4) | III | 5.0 (0.20) | 13.7 (0.54) | 11.4 (0.45) | 64.0 (2.52) | Blue |
| TCTS2-6-1/4-V-U | 6 | 1/4 | 0.50 (12.7) | V | 5.0 (0.20) | 13.7 (0.54) | 11.4 (0.45) | 51.0 (2.01) | Blue |
| TCTS2-6-1/4-II-U | 6 | 1/4 | 0.75 (19.1) | II | 5.0 (0.20) | 13.7 (0.54) | 11.4 (0.45) | 57.0 (2.24) | Blue |
| TCTS2-6-5/16-III-U | 6 | 5/16 | 1.00 (25.4) | III | 5.0 (0.20) | 13.7 (0.54) | 13.2 (0.52) | 68.5 (2.70) | Blue |
| TCTS2-6-3/8-III-U | 6 | 3/8 | 1.00 (25.4) | III | 5.0 (0.20) | 13.7 (0.54) | 16.0 (0.63) | 68.5 (2.70) | Blue |
| TCTS2-4-1/4-I-U | 4 | 1/4 | 0.63 (15.9) | I | 6.3 (0.25) | 20.6 (0.81) | 12.7 (0.50) | 62.0 (2.44) | Gray |
| TCTS2-4-1/4-II-U | 4 | 1/4 | 0.75 (19.1) | II | 6.3 (0.25) | 20.6 (0.81) | 12.7 (0.50) | 65.0 (2.56) | Gray |
| TCTS2-4-1/4-III-U | 4 | 1/4 | 1.00 (25.4) | III | 6.3 (0.25) | 20.6 (0.81) | 12.7 (0.50) | 71.5 (2.81) | Gray |
| TCTS2-4-3/8-III-U | 4 | 3/8 | 1.00 (25.4) | III | 6.3 (0.25) | 20.6 (0.81) | 14.7 (0.58) | 76.0 (2.99) | Gray |
| TCTS2-2-1/4-I-U | 2 | 1/4 | 0.63 (15.9) | I | 7.8 (0.31) | 22.4 (0.88) | 15.5 (0.61) | 69.0 (2.72) | Brown |
| TCTS2-2-1/4-II-U | 2 | 1/4 | 0.75 (19.1) | II | 7.8 (0.31) | 22.4 (0.88) | 15.5 (0.61) | 73.0 (2.87) | Brown |
| TCTS2-2-1/4-III-U | 2 | 1/4 | 1.00 (25.4) | III | 7.8 (0.31) | 22.4 (0.88) | 15.5 (0.61) | 80.0 (3.15) | Brown |
| TCTS2-2-5/16-II-U | 2 | 5/16 | 0.75 (19.1) | II | 7.8 (0.31) | 22.4 (0.88) | 15.5 (0.61) | 74.0 (2.91) | Brown |
| TCTS2-2-5/16-III-U | 2 | 5/16 | 1.00 (25.4) | III | 7.8 (0.31) | 22.4 (0.88) | 15.5 (0.61) | 80.0 (3.15) | Brown |
| TCTS2-2-3/8-III-U | 2 | 3/8 | 1.00 (25.4) | III | 7.8 (0.31) | 22.4 (0.88) | 15.5 (0.61) | 80.0 (3.15) | Brown |
| TCTS2-2-1/2-IV-U | 2 | 1/2 | 0.75 (19.1) | IV | 7.8 (0.31) | 22.4 (0.88) | 18.5 (0.73) | 100.0 (3.94) | Brown |
| TCTS2-1-1/4-I-U | 1 | 1/4 | 0.63 (15.9) | I | 9.0 (0.35) | 22.4 (0.88) | 17.3 (0.68) | 83.0 (3.27) | Green |
| TCTS2-1-1/4-II-U | 1 | 1/4 | 0.75 (19.1) | II | 9.0 (0.35) | 22.4 (0.88) | 17.3 (0.68) | 85.0 (3.35) | Green |
| TCTS2-1-5/16-VI-U | 1 | 5/16 | 0.87 (22.2) | VI | 9.0 (0.35) | 22.4 (0.88) | 17.3 (0.68) | 89.0 (3.50) | Green |
| TCTS2-1-3/8-III-U | 1 | 3/8 | 1.00 (25.4) | III | 9.0 (0.35) | 22.4 (0.88) | 17.3 (0.68) | 91.0 (3.58) | Green |
| TCTS2-1-1/2-IV-U | 1 | 1/2 | 0.75 (19.1) | IV | 9.0 (0.35) | 22.4 (0.88) | 18.5 (0.73) | 110.0 (4.37) | Green |
| TCTS2-1/0-1/4-I-U | 1/0 | 1/4 | 0.63 (15.9) | I | 9.9 (0.39) | 22.4 (0.88) | 19.1 (0.75) | 82.0 (3.23) | Pink |
| TCTS2-1/0-1/4-II-U | 1/0 | 1/4 | 0.75 (19.1) | II | 9.9 (0.39) | 22.4 (0.88) | 19.1 (0.75) | 85.5 (3.37) | Pink |

Copper Compression Lugs

| Standard Barrel - Two Hole | | | | | | | | | |
|----------------------------|-------------------|--------------------|-------------------|------|---------------|-------------------|----------------|------------------|------------|
| TE Product Code | Conductor AWG/MCM | Dimensions mm (In) | | | | | | | Color Code |
| | | E (Stud Hole) | Stud Hole Spacing | Type | A (Barrel ID) | B (Barrel Length) | D (Palm Width) | J (Total Length) | |
| TCTS2-1/0-5/16-VI-U | 1/0 | 5/16 | 0.87 (22.2) | VI | 9.9 (0.39) | 22.4 (0.88) | 19.1 (0.75) | 88.5 (3.48) | Pink |
| TCTS2-1/0-3/8-III-U | 1/0 | 3/8 | 1.00 (25.4) | III | 9.9 (0.39) | 22.4 (0.88) | 19.1 (0.75) | 91.5 (3.6) | Pink |
| TCTS2-1/0-1/2-IV-U | 1/0 | 1/2 | 0.75 (19.1) | IV | 9.9 (0.39) | 22.4 (0.88) | 19.1 (0.75) | 110.5 (4.35) | Pink |
| TCTS2-2/0-1/4-I-U | 2/0 | 1/4 | 0.63 (15.9) | I | 11.3 (0.45) | 23.9 (0.94) | 20.8 (0.82) | 85.0 (3.35) | Black |
| TCTS2-2/0-1/4-II-U | 2/0 | 1/4 | 0.75 (19.1) | II | 11.3 (0.45) | 23.9 (0.94) | 20.8 (0.82) | 88.0 (3.46) | Black |
| TCTS2-2/0-5/16-VI-U | 2/0 | 5/16 | 0.87 (22.2) | VI | 11.3 (0.45) | 23.9 (0.94) | 15.7 (0.62) | 91.0 (3.58) | Black |
| TCTS2-2/0-3/8-III-U | 2/0 | 3/8 | 1.00 (25.4) | III | 11.3 (0.45) | 23.9 (0.94) | 20.8 (0.82) | 94.0 (3.7) | Black |
| TCTS2-2/0-1/2-IV-U | 2/0 | 1/2 | 1.75 (44.5) | IV | 11.3 (0.45) | 23.9 (0.94) | 20.8 (0.82) | 113.2 (4.46) | Black |
| TCTS2-3/0-1/4-II-U | 3/0 | 1/4 | 0.75 (19.1) | II | 12.4 (0.49) | 25.4 (1.00) | 23.1 (0.91) | 91.2 (3.59) | Orange |
| TCTS2-3/0-5/16-III-U | 3/0 | 5/16 | 1.00 (25.4) | III | 12.4 (0.49) | 25.4 (1.00) | 23.1 (0.91) | 97.5 (3.84) | Orange |
| TCTS2-3/0-3/8-III-U | 3/0 | 3/8 | 1.00 (25.4) | III | 12.4 (0.49) | 25.4 (1.00) | 23.1 (0.91) | 97.5 (3.84) | Orange |
| TCTS2-3/0-1/2-IV-U | 3/0 | 1/2 | 1.75 (44.5) | IV | 12.4 (0.49) | 25.4 (1.00) | 23.1 (0.91) | 116.7 (4.59) | Orange |
| TCTS2-4/0-1/4-II-U | 4/0 | 1/4 | 0.75 (19.1) | II | 14.2 (0.56) | 22.4 (0.88) | 25.4 (1.00) | 89.0 (3.5) | Purple |
| TCTS2-4/0-1/4-III-U | 4/0 | 1/4 | 1.00 (25.4) | III | 14.2 (0.56) | 22.4 (0.88) | 25.4 (1.00) | 95.5 (3.76) | Purple |
| TCTS2-4/0-3/8-III-U | 4/0 | 3/8 | 1.00 (25.4) | III | 14.2 (0.56) | 22.4 (0.88) | 25.4 (1.00) | 95.5 (3.76) | Purple |
| TCTS2-4/0-1/2-IV-U | 4/0 | 1/2 | 1.75 (44.5) | IV | 14.2 (0.56) | 22.4 (0.88) | 25.4 (1.00) | 115.0 (4.53) | Purple |
| TCTS2-250-3/8-III-U | 250 | 3/8 | 1.00 (25.4) | III | 15.1 (0.59) | 26.9 (1.06) | 27.7 (1.09) | 102.0 (4.02) | Yellow |
| TCTS2-250-1/2-IV-U | 250 | 1/2 | 1.75 (44.5) | IV | 15.1 (0.59) | 26.9 (1.06) | 27.7 (1.09) | 121.0 (4.76) | Yellow |
| TCTS2-300-3/8-III-U | 300 | 3/8 | 1.00 (25.4) | III | 16.5 (0.65) | 26.2 (1.03) | 30.5 (1.20) | 102.0 (4.02) | White |
| TCTS2-300-1/2-IV-U | 300 | 1/2 | 1.75 (44.5) | IV | 16.5 (0.65) | 26.2 (1.03) | 30.5 (1.20) | 121.0 (4.76) | White |
| TCTS2-350-1/4-II-U | 350 | 1/4 | 0.75 (19.1) | II | 17.8 (0.7) | 26.9 (1.06) | 32.8 (1.29) | 95.0 (3.74) | Red |
| TCTS2-350-3/8-III-U | 350 | 3/8 | 1.00 (25.4) | III | 17.8 (0.7) | 26.9 (1.06) | 32.8 (1.29) | 102.0 (4.02) | Red |
| TCTS2-350-1/2-VII-U | 350 | 1/2 | 1.25 (31.8) | VII | 17.8 (0.7) | 32.8 (1.29) | 32.8 (1.29) | 115.0 (4.53) | Red |
| TCTS2-350-1/2-IV-U | 350 | 1/2 | 1.75 (44.5) | IV | 17.8 (0.7) | 32.8 (1.29) | 32.8 (1.29) | 128.0 (5.04) | Red |
| TCTS2-400-3/8-III-U | 400 | 3/8 | 1.00 (25.4) | III | 19.3 (0.76) | 30.2 (1.19) | 35.1 (1.38) | 108.0 (4.25) | Blue |
| TCTS2-400-1/2-IV-U | 400 | 1/2 | 1.75 (44.5) | IV | 19.3 (0.76) | 30.2 (1.19) | 35.6 (1.40) | 128.0 (5.04) | Blue |
| TCTS2-500-1/4-II-U | 500 | 1/4 | 0.75 (19.1) | II | 21.1 (0.83) | 32.3 (1.27) | 39.1 (1.54) | 102.0 (4.02) | Brown |
| TCTS2-500-3/8-III-U | 500 | 3/8 | 1.00 (25.4) | III | 21.1 (0.83) | 32.3 (1.27) | 39.1 (1.54) | 110.0 (4.33) | Brown |
| TCTS2-500-1/2-IV-U | 500 | 1/2 | 1.75 (44.5) | IV | 21.1 (0.83) | 32.3 (1.27) | 39.1 (1.54) | 129.0 (5.08) | Brown |
| TCTS2-600-3/8-III-U | 600 | 3/8 | 1.00 (25.4) | III | 23.4 (0.92) | 35.1 (1.38) | 43.4 (1.71) | 117.0 (4.61) | Green |
| TCTS2-600-1/2-IV-U | 600 | 1/2 | 1.75 (44.5) | IV | 23.4 (0.92) | 35.1 (1.38) | 43.4 (1.71) | 135.0 (5.31) | Green |
| TCTS2-750-3/8-III-U | 750 | 3/8 | 1.00 (25.4) | III | 26.2 (1.03) | 36.1 (1.42) | 48.0 (1.89) | 118.0 (4.65) | Black |
| TCTS2-750-1/2-IV-U | 750 | 1/2 | 1.75 (44.5) | IV | 26.2 (1.03) | 36.1 (1.42) | 48.0 (1.89) | 137.0 (5.39) | Black |
| TCTS2-1000-1/2-VII-U | 1000 | 1/2 | 1.25 (31.8) | VII | 29.7 (1.17) | 41.9 (1.65) | 55.6 (2.19) | 133.0 (5.24) | White |
| TCTS2-1000-1/2-IV-U | 1000 | 1/2 | 1.75 (44.5) | IV | 29.7 (1.17) | 41.9 (1.65) | 55.6 (2.19) | 147.0 (5.79) | White |

Copper Compression Lugs



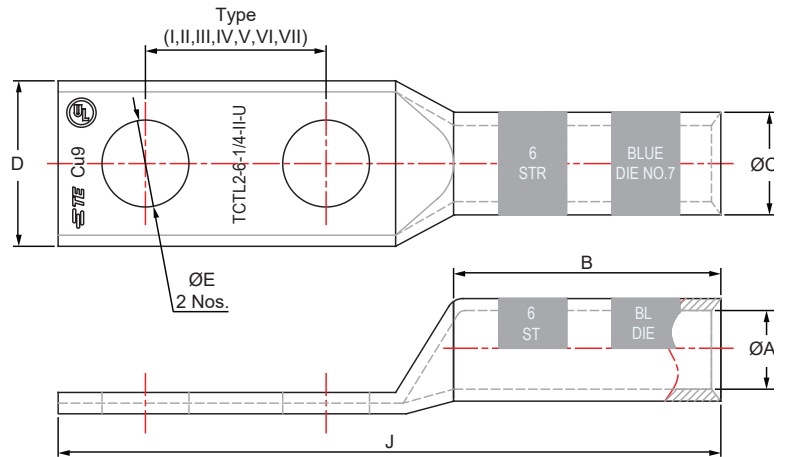
Long Barrel - One Hole

| TE Product code | Conductor AWG/MCM | Dimensions mm (In) | | | | | Color Code |
|-----------------|----------------------|--------------------|------------------|----------------------|-------------------|---------------------|------------|
| | | E (Stud Hole) | A (Barrel ID) | B (Barrel Length) | D (Palm Width) | J (Total Length) | |
| TCTL-8-10-U | 8 | # 10 | 4.4 (0.20) | 20.6 (0.81) | 9.7 (0.38) | 42.9 (1.69) | Red |
| TCTL-8-1/4-U | 8 | 1/4 | 4.4 (0.20) | 20.6 (0.81) | 10.4 (0.41) | 42.9 (1.69) | Red |
| TCTL-6-10-U | 6 | #10 | 5.0 (0.20) | 28.4 (1.12) | 10.4 (0.41) | 48.3 (1.90) | Red |
| TCTL-6-1/4-U | 6 | 1/4 | 5.0 (0.20) | 28.4 (1.12) | 10.4 (0.41) | 48.3 (1.90) | Red |
| TCTL-6-1/2-U | 6 | 1/2 | 5.0 (0.20) | 28.4 (1.12) | 21.1 (0.83) | 67.1 (2.64) | Red |
| TCTL-4-10-U | 4 | # 10 | 6.3 (0.20) | 28.4 (1.12) | 12.4 (0.49) | 48.3 (1.90) | Blue |
| TCTL-4-1/4-U | 4 | 1/4 | 6.3 (0.20) | 28.4 (1.12) | 12.7 (0.50) | 48.5 (1.91) | Blue |
| TCTL-4-3/8-U | 4 | 3/8 | 6.3 (0.20) | 28.4 (1.12) | 14.7 (0.58) | 57.2 (2.25) | Blue |
| TCTL-4-1/2-U | 4 | 1/2 | 6.3 (0.20) | 28.4 (1.12) | 21.1 (0.83) | 68.3 (2.69) | Blue |
| TCTL-2-10-U | 2 | # 10 | 7.8 (0.30) | 31.8 (1.25) | 15.5 (0.61) | 56.0 (2.20) | Blue |
| TCTL-2-5/16-U | 2 | 5/16 | 7.8 (0.30) | 31.8 (1.25) | 15.5 (0.61) | 58.2 (2.29) | Blue |
| TCTL-2-1/2-U | 2 | 1/2 | 7.8 (0.30) | 31.8 (1.25) | 21.1 (0.83) | 73.2 (2.88) | Blue |
| TCTL-1-10-U | 1 | # 10 | 9.0 (0.40) | 35.1 (1.38) | 17.3 (0.68) | 78.7 (3.10) | Gray |
| TCTL-1-5/16-U | 1 | 5/16 | 9.0 (0.40) | 35.1 (1.38) | 17.3 (0.68) | 78.7 (3.10) | Gray |
| TCTL-1-1/2-U | 1 | 1/2 | 9.0 (0.40) | 35.1 (1.38) | 21.1 (0.83) | 77.7 (3.06) | Gray |
| TCTL-1/0-10-U | 1/0 | # 10 | 9.9 (0.40) | 35.1 (1.38) | 19.1 (0.75) | 78.7 (3.10) | Gray |
| TCTL-1/0-5/16-U | 1/0 | 5/16 | 9.9 (0.40) | 35.1 (1.38) | 19.1 (0.75) | 78.7 (3.10) | Brown |
| TCTL-1/0-3/8-U | 1/0 | 3/8 | 9.9 (0.40) | 35.1 (1.38) | 19.1 (0.75) | 78.7 (3.10) | Brown |
| TCTL-1/0-1/2-U | 1/0 | 1/2 | 9.9 (0.40) | 35.1 (1.38) | 19.1 (0.75) | 77.5 (3.05) | Brown |
| TCTL-2/0-3/8-U | 2/0 | 3/8 | 11.3 (0.40) | 38.1 (1.50) | 20.8 (0.82) | 81.3 (3.20) | Brown |
| TCTL-2/0-1/2-U | 2/0 | 1/2 | 11.3 (0.40) | 38.1 (1.50) | 20.8 (0.82) | 81.5 (3.21) | Brown |
| TCTL-3/0-3/8-U | 3/0 | 3/8 | 12.4 (0.50) | 38.1 (1.50) | 23.1 (0.91) | 77.7 (3.06) | Brown |
| TCTL-3/0-1/2-U | 3/0 | 1/2 | 12.4 (0.50) | 38.1 (1.50) | 23.1 (0.91) | 77.7 (3.06) | Brown |
| TCTL-4/0-3/8-U | 4/0 | 3/8 | 14.2 (0.60) | 41.1 (1.62) | 25.4 (1.00) | 75.7 (2.98) | Green |
| TCTL-4/0-1/2-U | 4/0 | 1/2 | 14.2 (0.60) | 41.1 (1.62) | 25.4 (1.00) | 82.0 (3.23) | Green |
| TCTL-250-1/2-U | 250 | 1/2 | 15.1 (0.60) | 41.1 (1.62) | 27.7 (1.09) | 82.8 (3.26) | Green |

Copper Compression Lugs

| Standard Barrel - Two Hole | | | | | | | |
|----------------------------|-------------------|--------------------|---------------|-------------------|----------------|------------------|------------|
| TE Product Code | Conductor AWG/MCM | Dimensions mm (In) | | | | | Color Code |
| | | E (Stud Hole) | A (Barrel ID) | B (Barrel Length) | D (Palm Width) | J (Total Length) | |
| TCTL-300-5/16-U | 300 | 5/16 | 16.5 (0.60) | 50.8 (2.00) | 30.5 (1.20) | 93.7 (3.69) | Green |
| TCTL-300-3/8-U | 300 | 3/8 | 16.5 (0.60) | 50.8 (2.00) | 30.5 (1.20) | 93.7 (3.69) | Green |
| TCTL-300-1/2-U | 300 | 1/2 | 16.5 (0.60) | 50.8 (2.00) | 30.5 (1.20) | 93.7 (3.69) | Pink |
| TCTL-350-3/8-U | 350 | 3/8 | 17.8 (0.70) | 50.8 (2.00) | 32.8 (1.29) | 94.7 (3.73) | Pink |
| TCTL-350-1/2-U | 350 | 1/2 | 17.8 (0.70) | 50.8 (2.00) | 32.8 (1.29) | 94.7 (3.73) | Pink |
| TCTL-400-3/8-U | 400 | 3/8 | 19.3 (0.80) | 53.8 (2.12) | 35.1 (1.38) | 104.1 (4.10) | Pink |
| TCTL-400-1/2-U | 400 | 1/2 | 19.3 (0.80) | 53.8 (2.12) | 35.1 (1.38) | 104.1 (4.10) | Pink |
| TCTL-400-5/8-U | 400 | 5/8 | 19.3 (0.80) | 53.8 (2.12) | 35.1 (1.38) | 104.1 (4.10) | Black |
| TCTL-500-1/2-U | 500 | 1/2 | 21.1 (0.80) | 57.2 (2.25) | 39.1 (1.54) | 111.8 (4.40) | Black |
| TCTL-500-5/8-U | 500 | 5/8 | 21.1 (0.80) | 57.2 (2.25) | 39.1 (1.54) | 111.8 (4.40) | Black |
| TCTL-600-1/2-U | 600 | 1/2 | 23.4 (0.90) | 68.3 (2.69) | 43.4 (1.71) | 122.7 (4.83) | Black |
| TCTL-600-5/8-U | 600 | 5/8 | 23.4 (0.90) | 68.3 (2.69) | 43.4 (1.71) | 121.9 (4.80) | Black |
| TCTL-750-1/2-U | 750 | 1/2 | 26.2 (1.00) | 73.2 (2.88) | 48.0 (1.89) | 129.8 (5.11) | Orange |
| TCTL-750-5/8-U | 750 | 5/8 | 26.2 (1.00) | 73.2 (2.88) | 48.0 (1.89) | 129.5 (5.10) | Orange |
| TCTL-1000-1/2-U | 1000 | 1/2 | 29.7 (1.20) | 76.2 (3.00) | 55.6 (2.19) | 137.2 (5.40) | Orange |
| TCTL-1000-5/8-U | 1000 | 5/8 | 29.7 (1.20) | 76.2 (3.00) | 55.6 (2.19) | 137.2 (5.40) | Orange |

Copper Compression Lugs



Long Barrel - Two Hole

| TE Product Code | Conductor AWG/MCM | Dimensions mm (In) | | | | | | | | Color Code |
|----------------------|-------------------|--------------------|-------------------|------|---------------|-------------------|----------------|------------------|-------|------------|
| | | E (Stud Hole) | Stud Hole Spacing | Type | A (Barrel ID) | B (Barrel Length) | D (Palm Width) | J (Total Length) | | |
| TCTL2-8-1/4-I-U | 8 | 1/4 | 0.63 (15.9) | I | 4.4 (0.17) | 20.6 (0.81) | 10.7 (0.42) | 59.2 (2.33) | Red | |
| TCTL2-8-1/4-II-U | 8 | 1/4 | 0.75 (19.1) | II | 4.4 (0.14) | 20.6 (0.81) | 10.7 (0.42) | 62.2 (2.45) | Red | |
| TCTL2-6-1/4-I-U | 6 | 1/4 | 0.63 (15.9) | I | 5.0 (0.20) | 28.4 (1.12) | 10.7 (0.42) | 67.3 (2.65) | Blue | |
| TCTL2-6-1/4-III-U | 6 | 1/4 | 1.00 (25.4) | III | 5.0 (0.20) | 28.4 (1.12) | 10.7 (0.42) | 77.0 (3.03) | Blue | |
| TCTL2-6-1/2-IV-U | 6 | 1/2 | 1.75 (44.5) | IV | 5.0 (0.20) | 28.4 (1.12) | 20.6 (0.81) | 118.8 (4.40) | Blue | |
| TCTL2-6-3/8-III-U | 6 | 3/8 | 1.00 (25.4) | III | 5.0 (0.20) | 28.4 (1.12) | 14.5 (0.57) | 81.8 (3.22) | Blue | |
| TCTL2-6-3/8-II-U | 6 | 3/8 | 0.75 (19.1) | II | 5.0 (0.20) | 28.4 (1.12) | 14.5 (0.57) | 75.4 (2.97) | Blue | |
| TCTL2-4-1/4-I-U | 4 | 1/4 | 0.63 (15.9) | I | 6.3 (0.25) | 28.4 (1.12) | 12.7 (0.50) | 68.6 (2.70) | Gray | |
| TCTL2-4-1/4-II-U | 4 | 1/4 | 0.75 (19.1) | II | 6.3 (0.25) | 28.4 (1.12) | 12.7 (0.50) | 71.9 (2.83) | Gray | |
| TCTL2-4-3/8-III-U | 4 | 3/8 | 1.00 (25.4) | III | 6.3 (0.25) | 28.4 (1.12) | 14.2 (0.56) | 82.8 (3.26) | Gray | |
| TCTL2-4-1/2-IV-U | 4 | 1/2 | 1.75 (44.5) | IV | 6.3 (0.25) | 28.4 (1.12) | 20.6 (0.81) | 113.0 (4.45) | Gray | |
| TCTL2-2-1/4-I-U | 2 | 1/4 | 0.63 (15.9) | I | 7.8 (0.31) | 31.8 (1.25) | 15.5 (0.61) | 77.5 (3.05) | Brown | |
| TCTL2-2-1/4-II-U | 2 | 1/4 | 0.75 (19.1) | II | 7.8 (0.31) | 31.8 (1.25) | 15.5 (0.61) | 80.5 (3.17) | Brown | |
| TCTL2-2-5/16-II-U | 2 | 5/16 | 0.75 (19.1) | II | 7.8 (0.31) | 31.8 (1.25) | 15.5 (0.61) | 80.5 (3.17) | Brown | |
| TCTL2-2-3/8-IV-U | 2 | 3/8 | 1.75 (44.5) | IV | 7.8 (0.31) | 31.8 (1.25) | 15.5 (0.61) | 105.9 (4.17) | Brown | |
| TCTL2-2-3/8-III-U | 2 | 3/8 | 1.00 (25.4) | III | 7.8 (0.31) | 31.8 (1.25) | 15.5 (0.61) | 86.9 (3.42) | Brown | |
| TCTL2-2-1/2-IV-U | 2 | 1/2 | 1.75 (44.5) | IV | 7.8 (0.31) | 31.8 (1.25) | 15.5 (0.61) | 105.9 (4.17) | Brown | |
| TCTL2-1-1/4-I-U | 1 | 1/4 | 0.63 (15.9) | I | 9.0 (0.35) | 35.1 (1.38) | 17.3 (0.68) | 93.5 (3.68) | Green | |
| TCTL2-1-1/4-II-U | 1 | 1/4 | 0.75 (19.1) | II | 9.0 (0.35) | 35.1 (1.38) | 17.3 (0.68) | 96.5 (3.80) | Green | |
| TCTL2-1-5/16-II-U | 1 | 5/16 | 0.75 (19.1) | II | 9.0 (0.35) | 35.1 (1.38) | 17.3 (0.68) | 96.5 (3.80) | Green | |
| TCTL2-1-3/8-III-U | 1 | 3/8 | 1.00 (25.4) | III | 9.0 (0.35) | 35.1 (1.38) | 17.3 (0.68) | 102.9 (4.05) | Green | |
| TCTL2-1-1/2-IV-U | 1 | 1/2 | 1.75 (44.5) | IV | 9.0 (0.35) | 35.1 (1.38) | 19.1 (0.75) | 122.4 (4.82) | Green | |
| TCTL2-1/0-1/4-I-U | 1/0 | 1/4 | 0.63 (15.9) | I | 9.9 (0.39) | 35.1 (1.38) | 19.1 (0.75) | 91.9 (3.62) | Pink | |
| TCTL2-1/0-1/4-II-U | 1/0 | 1/4 | 0.75 (19.1) | II | 9.9 (0.39) | 35.1 (1.38) | 19.1 (0.75) | 95.3 (3.75) | Pink | |
| TCTL2-1/0-5/16-III-U | 1/0 | 5/16 | 1.00 (25.4) | III | 9.9 (0.39) | 35.1 (1.38) | 19.1 (0.75) | 102.0 (4.02) | Pink | |
| TCTL2-1/0-3/8-III-U | 1/0 | 3/8 | 1.00 (25.4) | III | 9.9 (0.39) | 35.1 (1.38) | 19.1 (0.75) | 102.0 (4.02) | Pink | |
| TCTL2-1/0-3/8-IV-U | 1/0 | 3/8 | 1.75 (44.5) | IV | 9.9 (0.39) | 35.1 (1.38) | 19.1 (0.75) | 121.9 (4.80) | Pink | |
| TCTL2-1/0-1/2-IV-U | 1/0 | 1/2 | 1.75 (44.5) | IV | 9.9 (0.39) | 35.1 (1.38) | 20.6 (0.81) | 122.2 (4.81) | Pink | |
| TCTL2-2/0-1/4-I-U | 2/0 | 1/4 | 0.63 (15.9) | I | 11.3 (0.45) | 38.1 (1.50) | 20.8 (0.82) | 95.3 (3.75) | Black | |
| TCTL2-2/0-1/4-II-U | 2/0 | 1/4 | 0.75 (19.1) | II | 11.3 (0.45) | 38.1 (1.50) | 20.8 (0.82) | 99.1 (3.90) | Black | |

Copper Compression Lugs

Long Barrel - Two Hole

| TE Product Code | Conductor AWG/MCM | Dimensions mm (In) | | | | | | | Color Code |
|----------------------|-------------------|--------------------|-------------------|------|---------------|-------------------|----------------|------------------|------------|
| | | E (Stud Hole) | Stud Hole Spacing | Type | A (Barrel ID) | B (Barrel Length) | D (Palm Width) | J (Total Length) | |
| TCTL2-2/0-3/8-III-U | 2/0 | 3/8 | 1.00 (25.4) | III | 11.3 (0.45) | 38.1 (1.50) | 20.8 (0.82) | 105.4 (4.15) | Black |
| TCTL2-2/0-1/2-IV-U | 2/0 | 1/2 | 1.75 (44.5) | IV | 11.3 (0.45) | 38.1 (1.50) | 20.8 (0.82) | 126.2 (4.97) | Black |
| TCTL2-3/0-1/4-II-U | 3/0 | 1/4 | 0.75 (19.1) | II | 12.4 (0.49) | 38.1 (1.50) | 23.1 (0.91) | 101.6 (4.00) | Orange |
| TCTL2-3/0-3/8-III-U | 3/0 | 3/8 | 1.00 (25.4) | III | 12.4 (0.49) | 38.1 (1.50) | 23.1 (0.91) | 108.0 (4.25) | Orange |
| TCTL2-4/0-1/4-II-U | 4/0 | 1/4 | 0.75 (19.1) | II | 14.2 (0.56) | 41.1 (1.62) | 25.4 (1.00) | 105.4 (4.15) | Purple |
| TCTL2-4/0-3/8-IV-U | 4/0 | 3/8 | 1.75 (44.5) | IV | 14.2 (0.56) | 41.1 (1.62) | 25.4 (1.00) | 130.8 (5.15) | Purple |
| TCTL2-4/0-3/8-III-U | 4/0 | 3/8 | 1.00 (25.4) | III | 14.2 (0.56) | 41.1 (1.62) | 25.4 (1.00) | 111.8 (4.40) | Purple |
| TCTL2-4/0-1/2-IV-U | 4/0 | 1/2 | 1.75 (44.5) | IV | 14.2 (0.56) | 41.1 (1.62) | 25.4 (1.00) | 131.3 (5.17) | Purple |
| TCTL2-250-3/8-III-U | 250 | 3/8 | 1.00 (25.4) | III | 15.1 (0.59) | 41.1 (1.62) | 27.7 (1.09) | 113.3 (4.46) | Yellow |
| TCTL2-250-1/2-IV-U | 250 | 1/2 | 1.75 (44.5) | IV | 15.1 (0.59) | 41.1 (1.62) | 27.7 (1.09) | 132.3 (5.21) | Yellow |
| TCTL2-300-3/8-III-U | 300 | 3/8 | 1.00 (25.4) | III | 16.5 (0.65) | 50.8 (2.00) | 30.5 (1.20) | 124.2 (4.89) | White |
| TCTL2-300-1/2-IV-U | 300 | 1/2 | 1.75 (44.5) | IV | 16.5 (0.65) | 50.8 (2.00) | 30.5 (1.20) | 143.3 (5.64) | White |
| TCTL2-350-1/4-II-U | 350 | 1/4 | 0.75 (19.1) | II | 17.8 (0.70) | 50.8 (2.00) | 32.8 (1.29) | 115.6 (4.55) | Red |
| TCTL2-350-3/8-III-U | 350 | 3/8 | 1.00 (25.4) | III | 17.8 (0.70) | 50.8 (2.00) | 32.8 (1.29) | 123.2 (4.85) | Red |
| TCTL2-350-1/2-IV-U | 350 | 1/2 | 1.75 (44.5) | IV | 17.8 (0.70) | 50.8 (2.00) | 32.8 (1.29) | 144.3 (5.68) | Red |
| TCTL2-400-3/8-III-U | 400 | 3/8 | 1.00 (25.4) | III | 19.3 (0.76) | 53.8 (2.12) | 35.1 (1.38) | 127.0 (5.00) | Blue |
| TCTL2-400-1/2-IV-U | 400 | 1/2 | 1.75 (44.5) | IV | 19.3 (0.76) | 53.8 (2.12) | 35.1 (1.38) | 148.6 (5.85) | Blue |
| TCTL2-500-1/4-II-U | 500 | 1/4 | 0.75 (19.1) | II | 21.1 (0.83) | 57.2 (2.25) | 39.1 (1.54) | 123.2 (4.85) | Brown |
| TCTL2-500-3/8-III-U | 500 | 3/8 | 1.00 (25.4) | III | 21.1 (0.83) | 57.2 (2.25) | 39.1 (1.54) | 129.5 (5.10) | Brown |
| TCTL2-500-1/2-IV-U | 500 | 1/2 | 1.75 (44.5) | IV | 21.1 (0.83) | 57.2 (2.25) | 39.1 (1.54) | 153.9 (6.06) | Brown |
| TCTL2-600-3/8-III-U | 600 | 3/8 | 1.00 (25.4) | III | 23.4 (0.92) | 68.3 (2.69) | 43.4 (1.71) | 142.0 (5.59) | Green |
| TCTL2-600-1/2-IV-U | 600 | 1/2 | 1.75 (44.5) | IV | 23.4 (0.92) | 68.3 (2.69) | 43.4 (1.71) | 167.4 (6.59) | Green |
| TCTL2-750-1/2-IV-U | 750 | 1/2 | 1.75 (44.5) | IV | 26.2 (1.03) | 73.2 (2.88) | 48.0 (1.89) | 174.5 (6.87) | Black |
| TCTL2-750-3/8-III-U | 750 | 3/8 | 1.00 (25.4) | III | 26.2 (1.03) | 73.2 (2.88) | 48.0 (1.89) | 149.1 (5.87) | Black |
| TCTL2-1000-1/2-IV-U | 1000 | 1/2 | 1.75 (44.5) | IV | 3.0 (1.17) | 76.2 (3.00) | 55.6 (2.19) | 181.4 (7.14) | White |
| TCTL2-1000-3/8-III-U | 1000 | 3/8 | 1.00 (25.4) | III | 3.0 (1.17) | 76.2 (3.00) | 55.6 (2.19) | 156.0 (6.14) | White |



FILE NO. : E13288

te.com/energy

© 2018 TE Connectivity. All Rights Reserved. EPP-3213-DDS-10/18

TE Connectivity and TE connectivity (logo) are trademarks. Other logos, product and/or company names might be trademarks of their respective owners. While TE has made every reasonable effort to ensure the accuracy of the information in this brochure, TE does not guarantee that it is error-free, nor does TE make any other representation, warranty or guarantee that the information is accurate, correct, reliable or current. TE reserves the right to make any adjustments to the information contained herein at any time without notice. TE expressly disclaims all implied warranties regarding the information contained herein, including, but not limited to, any implied warranties of merchantability or fitness for a particular purpose. The dimensions in this catalog are for reference purposes only and are subject to change without notice. Specifications are subject to change without notice. Consult TE for the latest dimensions and design specifications.

FOR MORE INFORMATION: TE Technical Support Centers

USA: + 1 800 327 6996
 Canada: + 1 (905) 475-6222
 Mexico: + 52 (0) 55-1106-0800
 Latin/S. America: + 54 (0) 11-4733-2200
 France: + 33 380 583 200
 UK: + 44 0870 870 7500
 Germany: + 49 896 089 903
 Spain: + 34 916 630 400
 Italy: + 39 333 250 0915
 Benelux: + 32 16 508 695
 Russia: + 7 495-790 790 2-200
 China: + 86 (0) 400-820-6015