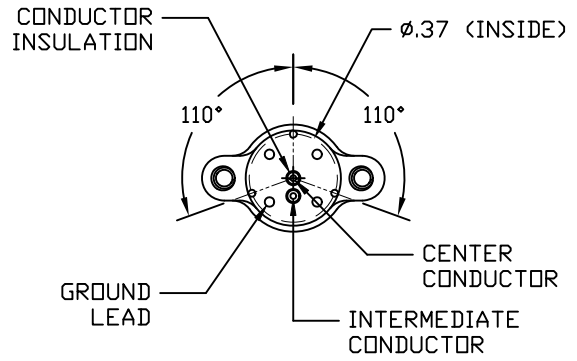
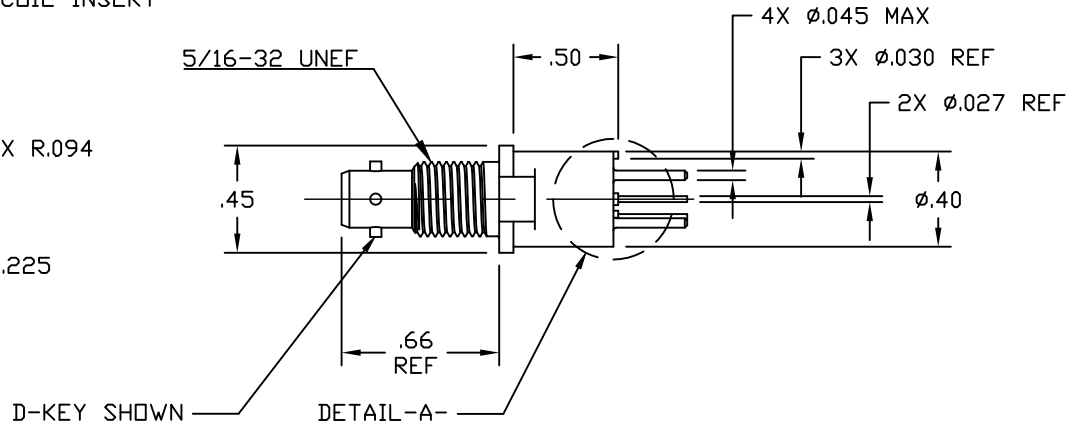
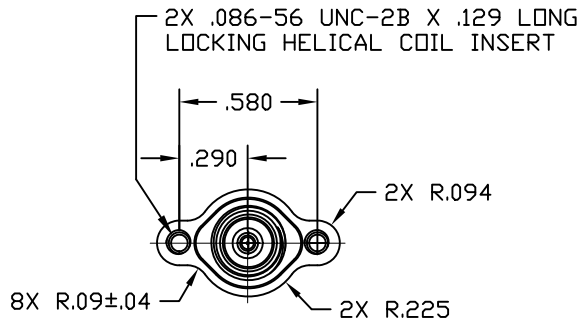


REVISIONS			
LTR	DESCRIPTION	DATE	APPROVED
A	INITIAL RELEASE OF DOCUMENT PER ECO-18-012552	08/08/2018	I. MYONG
B	REVISED CUSTOMER DOCUMENT PER ECO-18-015656	10/03/2018	I. MYONG



NOTES:

1.0 MATERIALS AND FINISHES.

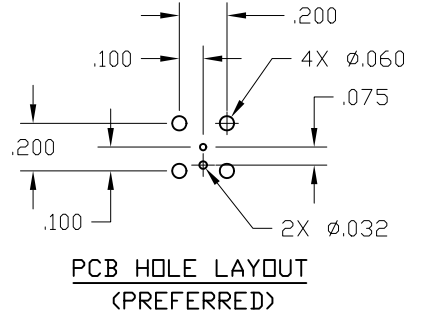
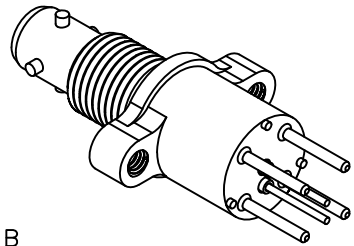
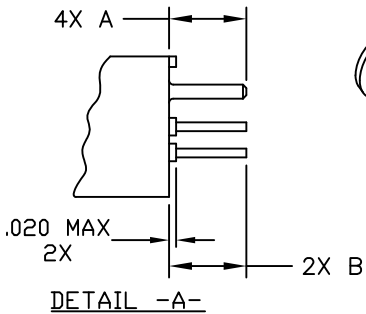
- 1.1 HOUSING BODY: BeCu ALLOY, ASTM B196, TB00 OR TD04 AND BRASS 360 HH. TIN PLATED PER ASTM-B545, OVER ELECTROLESS NICKEL PER AMS-C-26074.
- 1.2 CONNECTOR INSULATION: POLYETHERSULFONE.
- 1.3 CONDUCTOR INSULATION (2X): CROSS-LINKED POLYVINYLIDENE FLUORIDE.
- 1.4 CONDUCTOR LEAD (2X): 22 AWG (.027 MAX DIA), TIN PLATED COPPER WIRE.
- 1.5 GROUND LEADS (4X): .040 TYP DIAMETER, BRASS 360 HH. TIN PLATED PER ASTM-B545, OVER ELECTROLESS NICKEL PER AMS-C-26074.
- 1.6 LEAD SOLDERABILITY: PER J-STD-002, LESS STEAM AGING.
- 1.7 CONTACT: SOCKET D-602-0127 PIN D-602-0126

2.0 PERFORMANCE REQUIREMENTS.

- 2.1 THIS PRODUCT MEETS THE APPLICABLE REQUIREMENTS OF TE SPECIFICATION D-6025.

3.0 GENERAL CHARACTERISTICS.

- 3.1 OPERATING TEMPERATURE: -65°C TO 125°C
- 3.2 INSULATION RESISTANCE: GREATER THAN 5K MEGOHMS.
- 3.3 DIELECTRIC STRENGTH: 900 Vac @ 60 Hz.
- 3.4 CURRENT RATING: 3 AMPS MAX.
- 3.5 CONTACT RESISTANCE: INITIAL: 8 MILIOHMS MAX.
- 3.6 MATING COUPLING TORQUE: 10 INCH LBS MAX.



DK-621-0434-SM-L20	SOCKET	A	DK-621-0433-P	.190-.201	.220-.240
DK-621-0440-SM-L20	SOCKET	D	DK-621-0439-P	.190-.201	.220-.240
DESCRIPTION	CONTACT	KEY	MATING CONNECTOR	A	B
PART ORDERING INFORMATION					

Raychem Databus  
CUSTOMER DRAWING

© 2018 TE CONNECTIVITY CORPORATION, ALL RIGHTS RESERVED.

THIS DRAWING AND THE INFORMATION SET FORTH HEREON ARE THE PROPERTY OF TE CONNECTIVITY CORPORATION, AND ARE TO BE HELD IN TRUST AND CONFIDENCE. PUBLICATION, DUPLICATION, DISCLOSURE OR USE FOR ANY PURPOSE NOT EXPRESSLY AUTHORIZED IN WRITING BY TE CONNECTIVITY CORPORATION IS PROHIBITED.

UNLESS OTHERWISE SPECIFIED DIMENSIONS ARE IN INCHES AND TOLERANCES ARE: .XXX ± .005 INCH .XX ± .02 INCH .X ± .1 INCH ANGLE ± 1° 0'		DRAWN: GMR DATE: 08/06/2018	TE Connectivity	
MATERIAL: SEE NOTES		CHECKED: _____ DATE: _____	TITLE: CONNECTOR, TRIAXIAL, THREADED JACK, PCB MOUNT	
FINISH: SEE NOTES		APPROVED: I. MYONG DATE: 08/06/2018	THIRD ANGLE PROJECTION	
CAD NAME: DK-621-04XX-XM-LXX_CD		SIZE: B	CODE IDENT. NO.: 06090	DOCUMENT NO.: DK-621-04XX-XM-LXX
RPN:		SCALE: —	DO NOT SCALE THIS DRAWING	REV B SHEET 1 OF 1