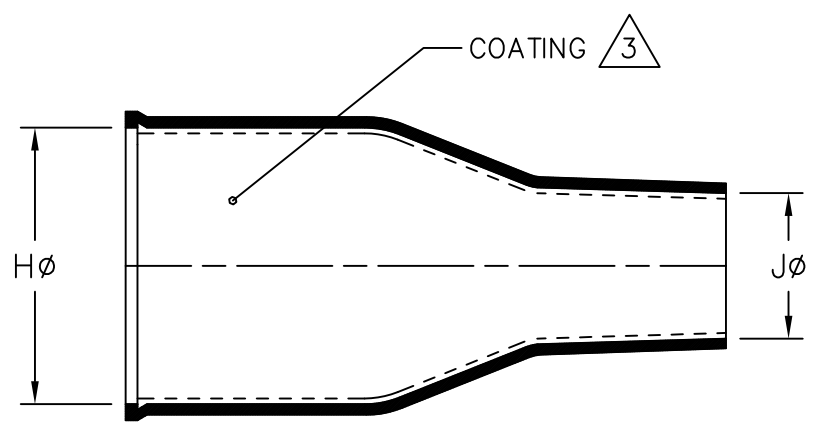
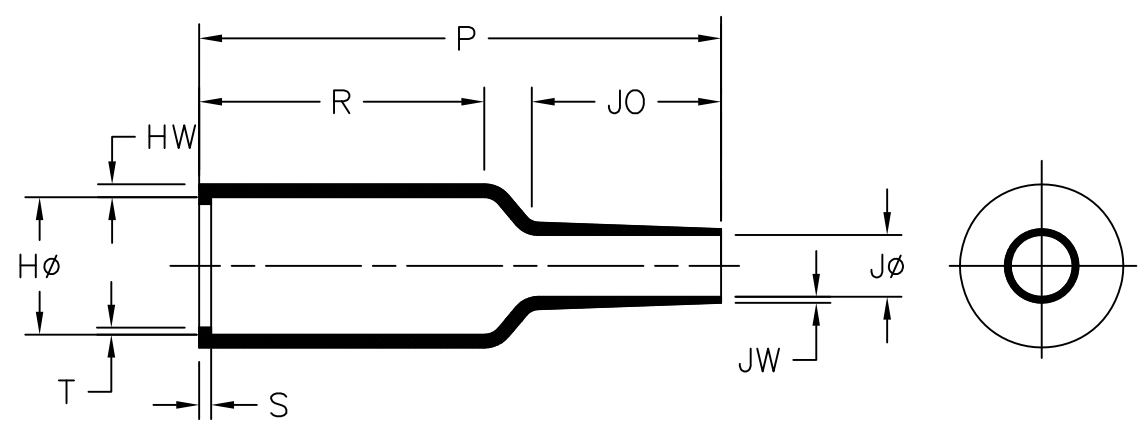


REVISIONS		
LTR	DESCRIPTION	DATE
A	REVISED PER ECO-14-013924	09/03/2014



AS SUPPLIED



AFTER UNRESTRICTED RECOVERY

NOTES

- ALL DIMENSIONS ARE IN $\frac{\text{INCHES}}{\text{[MILLIMETERS]}}$
- DIMENSIONS APPEARING IN TABLE ARE AS FOLLOWS:
 a - AS SUPPLIED
 b - AFTER UNRESTRICTED RECOVERY

3. COATING (ADHESIVE): IS OPTIONAL. AS SUPPLIED DIMENSIONS APPEARING IN TABLE ARE FOR UNCOATED PARTS. WHEN COATING IS ADDED, ENTRY DIAMETER WILL BE REDUCED BY .06 [1.5] MAX.

4. ORDERING INFORMATION

202K111 -100 /XXX -0

BASE PART NUMBER _____

MATERIAL DASH NUMBER _____
 -100 POLYOLEFIN, SEMI-FLEXIBLE ZEROHAL (RW-2082)

ADHESIVE SLASH NUMBER _____
 SEE COMPATIBILITY CHART BELOW

COLOR DESIGNATOR _____

PART DESCRIPTION	H		J		P	R	S	T	JO	HW	JW
	MIN a	MAX b	MIN a	MAX b	±10% b	±10% b	±10% b	±10% b	±10% b	±20% b	±20% b
202K111	.71 [18,0]	.27 [6,9]	.31 [8,0]	.12 [3,0]	1.54 [39]	.94 [24]	.07 [1,7]	.04 [0,9]	.43 [10,8]	.05 [1,3]	.03 [0,7]

If this document is printed it becomes uncontrolled. Check for the latest revision.

Raychem Molded Parts
CUSTOMER DRAWING

MATERIAL DASH NO.	ADHESIVE (COATING) SLASH NUMBER	ADHESIVE (COATING) S NUMBER
-100	/86; /180	S-1048; S-1030

UNLESS OTHERWISE SPECIFIED DIMENSIONS ARE INCHES. METRIC DIMENSIONS ARE IN BRACKETS.

DECIMAL TOLERANCES
 .XXX ± 0.005 [0.13 mm]
 .XX ± 0.01 [0.25 mm]
 .X ± 0.1 [0.50 mm]

ANGLE TOLERANCE
 ANGLE ± 1 DEG.

TYCO ELECTRONICS CORPORATION RESERVES THE RIGHT TO AMEND THIS DRAWING AT ANY TIME. USERS SHOULD EVALUATE THE SUITABILITY OF THE PRODUCT FOR THEIR APPLICATION.

© 2014 Tyco Electronics Corporation. All rights reserved.

REVISED
 YNGUYEN

APPROVED
 S.GRAVANO

THIRD ANGLE PROJECTION

TE TE Connectivity

TITLE
 BOOT, STRAIGHT WITH LIP

SIZE B CODE IDENT. NO. 06090 DWG. NO. 202K111-100

SCALE: NTS DO NOT SCALE THIS DRAWING SHEET 1 OF 1