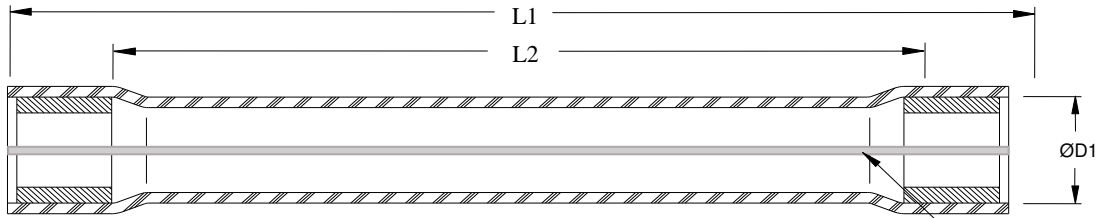
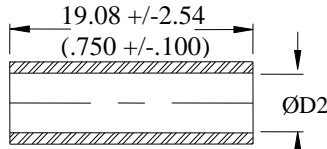


CUSTOMER DRAWING




(1) CABLE SEALING SLEEVE, Qty/kit: 1 YELLOW STRIPE



(2) MELTABLE INSERT, Qty: 2

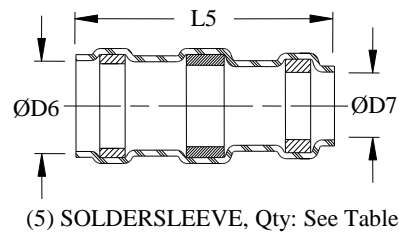
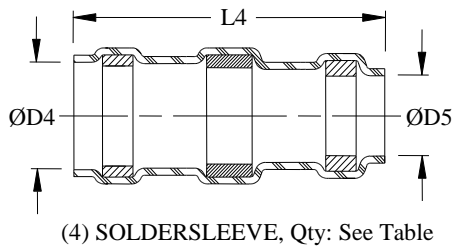
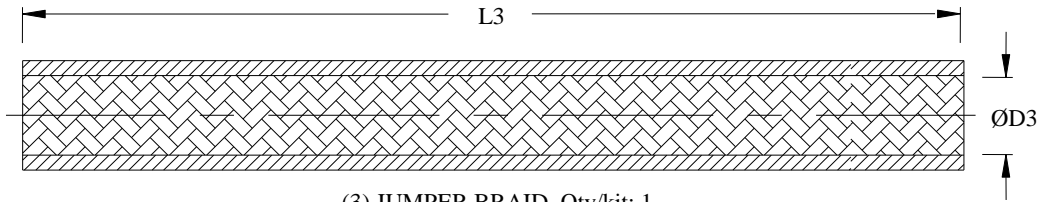
OUTER INSULATION SLEEVE AND MELTABLE INSERT DIMENSIONS

Part Description	Item 1 Cable Sealing Sleeve			Item 2 Meltable Insert	
	L1 Max	L2 Nom	ØD1 Min	ØD2±0.12 (±0.005)	Qty
D-150-0228-RT	120.6 (4.750)	76.2 (3.000)	5.0 (.197)	N/A	0
D-150-0230-RT	120.6 (4.750)	76.2 (3.000)	5.0 (.197)	N/A	0
D-150-0231-RT	120.6 (4.750)	76.5 (3.000)	5.0 (.197)	N/A	0
D-150-0232-RT	120.6 (4.750)	76.2 (3.000)	6.5 (.255)	N/A	0
D-150-0233-RT	150.0 (5.905)	107.9 (4.250)	6.5 (.255)	2.87 (.113)	2
D-150-0235-RT	150.0 (5.905)	107.9 (4.250)	6.5 (.255)	3.81 (.150)	2
D-150-0236-RT	150.0 (5.905)	107.9 (4.250)	8.9 (.350)	3.81 (.150)	2
D-150-0237-RT	150.0 (5.905)	107.9 (4.250)	8.9 (.350)	3.81 (.150)	2
D-150-0238-RT	152.4 (6.00)	107.9 (4.250)	12.7 (0.50)	5.26 (0.21)	2
D-150-0239-RT	152.4 (6.00)	107.9 (4.250)	6.5 (.255)	5.26 (0.21)	2
D-150-0241-RT	152.4 (6.00)	107.9 (4.250)	12.7 (0.50)	5.26 (0.21)	2
D-150-0242-RT	120.6 (4.750)	76.2 (3.000)	6.5 (.255)	N/A	0
D-150-0243-RT	120.6 (4.750)	76.2 (3.000)	6.5 (.255)	N/A	0
D-150-0244-RT	150.00 (5.905)	107.9 (4.250)	6.5 (.255)	3.81 (.150)	2

		TITLE: 1 TO 1, 1 TO 2, 2 TO 2 SPLICES CRIMP, FLEXIBLE SHIELD SPLICE KIT, SHIELDED CABLE 26 THRU 10 AWG, TIN PLATED	
Unless otherwise specified dimensions are in millimeters. [Inches dimensions are shown in brackets]		Raychem Devices	
DOCUMENT NO.: D-150-02XX-RT		REV: C3	
DATE: March 8, 2021		SCALE: DO NOT SCALE	
TOLERANCES: 0.00 N/A 0.0 N/A 0 N/A	ANGLES: N/A ROUGHNESS IN MICRON	Tyco Electronics reserves the right to amend this drawing at any time. Users should evaluate the suitability of the product for their application.	
PREPARED BY: LRODRIGUEZ	CAGE CODE: 06090	REVISED PER. ECO-21-003171	SIZE: A
		SHEET: 1 of 5	

CUSTOMER DRAWING

Part Description	L1 Max	L2 Nom	ØD1 Min	ØD2±0.12 (±0.005)	Qty
D-150-0245-RT	150.00 (5.905)	107.9 (4.250)	8.9 (.350)	5.26 (.207)	2
D-150-0246-RT	152.4 (6.00)	107.9 (4.250)	8.9 (.350)	5.26 (0.21)	2
D-150-0247-RT	150.00 (5.905)	107.9 (4.250)	8.9 (.350)	5.26 (.207)	2
D-150-0248-RT	152.4 (6.00)	107.9 (4.250)	8.9 (.350)	5.26 (0.21)	2
D-150-0249-RT	150.0 (5.905)	107.9 (4.250)	8.9 (.350)	5.26 (.207)	2
D-150-0252-RT	152.4 (6.00)	107.9 (4.25)	12.7 (0.50)	3.81 (.150)	2



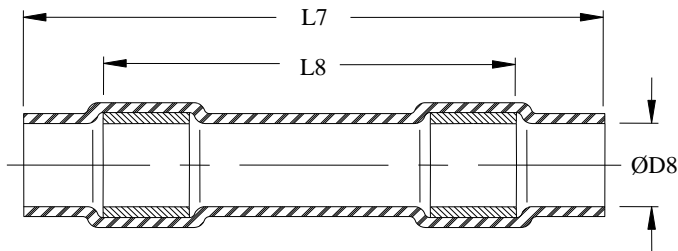
JUMPER BRAID, AND SOLDERSLLEEVE DIMENSIONS

Part Description	Item 3 Jumper Braid		Item 4 SolderSleeve				Item 5 SolderSleeve			
	L3 Min	ØD3 Min	L4 Max	ØD4 Min	ØD5 Min	Qty	L5 Max	ØD6 Min	ØD7 Min	Qty
D-150-0228-RT	65.0 (2.559)	5.08 (.200)	17.25 (.680)	5.00 (.195)	4.45 (.175)	2	--	--	--	0
D-150-0230-RT	65.0 (2.559)	5.08 (.200)	17.25 (.680)	5.00 (.195)	4.45 (.175)	2	--	--	--	0
D-150-0231-RT	70.0 (2.755)	5.08 (.200)	17.25 (.680)	5.00 (.195)	4.45 (.175)	2	--	--	--	0
D-150-0232-RT	65.0 (2.559)	6.35 (.250)	20.50 (.810)	6.45 (.255)	5.95 (.235)	2	--	--	--	0
D-150-0233-RT	85.0 (3.346)	6.35 (.250)	20.50 (.810)	6.45 (.255)	5.95 (.235)	2	--	--	--	0
D-150-0235-RT	85.0 (3.346)	8.51 (.335)	20.50 (.810)	7.60 (.300)	7.10 (.280)	2	--	--	--	0
D-150-0236-RT	85.0 (3.346)	8.51 (.335)	20.50 (.810)	7.60 (.300)	7.10 (.280)	2	--	--	--	0

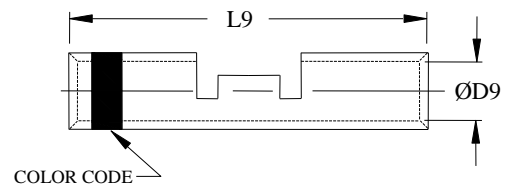
DOCUMENT NO.: D-150-02XX-RT	REV: C3	REVISED PER: ECO-21-003171	DATE: March 8, 2021	SHEET: 2 of 5
---------------------------------------	-------------------	-------------------------------	------------------------	------------------

CUSTOMER DRAWING

Part Description	L3 Min	ØD3 Min	L4 Max	ØD4 Min	ØD5 Min	Qty	L5 Max	ØD6 Min	ØD7 Min	Qty
D-150-0237-RT	85.0 (3.346)	8.51 (.335)	20.50 (.810)	7.60 (.300)	7.10 (.280)	2	--	--	--	0
D-150-0238-RT	90.0 (3.54)	9.65 (.380)	31.00 (1.220)	9.75 (.385)	8.75 (.345)	2	--	--	--	0
D-150-0239-RT	90.0 (3.54)	8.51 (.335)	20.50 (.810)	7.60 (.300)	7.10 (.280)	2	--	--	--	0
D-150-0241-RT	90.0 (3.54)	9.65 (.380)	31.00 (1.220)	9.75 (.385)	8.75 (.345)	2	--	--	--	0
D-150-0242-RT	65.0 (2.559)	6.35 (.250)	20.50 (.810)	6.45 (.255)	5.95 (.235)	2	--	--	--	0
D-150-0243-RT	85.0 (3.346)	6.35 (.250)	20.50 (.810)	6.45 (.255)	5.95 (.235)	1	17.25 (.680)	5.00 (.195)	4.45 (.175)	1
D-150-0244-RT	85.0 (3.346)	8.51 (.335)	20.50 (.810)	7.60 (.300)	7.10 (.280)	1	20.50 (.810)	6.45 (.255)	5.95 (.235)	1
D-150-0245-RT	85.0 (3.346)	9.65 (.380)	31.00 (1.220)	9.75 (.385)	8.75 (.345)	1	20.50 (.810)	7.60 (.300)	7.10 (.280)	1
D-150-0246-RT	85.0 (3.346)	9.65 (.380)	31.00 (1.220)	9.75 (.385)	8.75 (.345)	2	--	--	--	0
D-150-0247-RT	85.0 (3.346)	9.65 (.380)	31.00 (1.220)	9.75 (.385)	8.75 (.345)	1	20.50 (.810)	9.75 (.385)	7.10 (.280)	1
D-150-0248-RT	85.0 (3.346)	9.65 (.380)	31.00 (1.220)	9.75 (.385)	8.75 (.345)	1	20.50 (.810)	9.75 (.385)	7.10 (.280)	1
D-150-0249-RT	85.0 (3.346)	9.65 (.380)	31.00 (1.220)	9.75 (.385)	8.75 (.345)	1	20.50 (.810)	9.75 (.385)	7.10 (.280)	1
D-150-0252-RT	90.0 (3.54)	10.80 (0.425)	31.00 (1.220)	11.65 (0.460)	10.80 (0.425)	2	--	--	--	0



(6) SEALING SLEEVE, Qty: See Table



(7) CRIMP, Qty: See Table

INNER SEALING SLEEVE, CRIMP SPLICE, AND SEALING RINGS DIMENSIONS

Part Description	Items 6 Conductor Sealing Sleeve					Item 7 Crimp				
	L7 Max	L8 Min	ØD8 Min	Qty	Sealing Ring	L9±0.25 (±0.010)	ØD9	Qty	Color Code	Conductor CMA Range
D-150-0228-RT	29.2 (1.150)	24.13 (.950)	2.15 (.085)	1	Red	12.70 (.500)	1.14 – 1.34 (.045 – .053)	1	Red	305 – 1,510
D-150-0230-RT	29.2 (1.150)	24.13 (.950)	2.80 (.110)	1	Blue	14.60 (.575)	1.60 – 1.78 (.063 – .070)	1	Blue	779 – 2,680
D-150-0231-RT	29.2 (1.150)	24.13 (.950)	4.32 (.170)	1	Yellow	14.60 (.575)	2.41 – 2.67 (.095 – .105)	1	Yellow	1,900 – 6,755

DOCUMENT NO.: D-150-02XX-RT	REV.: C3	REVISED PER.: ECO-21-003171	DATE: March 8, 2021	SHEET: 3 of 5
---------------------------------------	--------------------	--------------------------------	------------------------	------------------

CUSTOMER DRAWING

Part Description	L7 Max	L8 Min	ØD8 Min	Qty	Sealing Ring	L9±0.25 (±0.010)	ØD9	Qty	Color Code	Conductor CMA Range
D-150-0232-RT	29.2 (1.150)	24.13 (.950)	4.32 (.170)	1	Yellow	14.60 (.575)	2.41 – 2.67 (.095 - .105)	1	Yellow	1,900 – 6,755
D-150-0233-RT	29.2 (1.150)	24.13 (.950)	2.15 (.085)	2	Red	12.70 (.500)	1.14 – 1.34 (.045 – .053)	2	Red	305 – 1,510
D-150-0235-RT	29.2 (1.150)	24.13 (.950)	4.32 (.170)	2	Yellow	14.60 (.575)	2.41 – 2.67 (.095 - .105)	2	Yellow	1,900 – 6,755
D-150-0236-RT	29.2 (1.150)	24.13 (.950)	2.15 (.085)	2	Red	12.70 (.500)	1.14 – 1.34 (.045 – .053)	2	Red	305 – 1,510
D-150-0237-RT	29.2 (1.150)	24.13 (.950)	2.80 (.110)	3	Blue	14.60 (.575)	1.60 – 1.78 (.063 - .070)	3	Blue	779 – 2,680
D-150-0238-RT	29.2 (1.150)	24.13 (.950)	4.32 (.170)	3	Yellow	14.60 (.575)	2.41 – 2.67 (.095 - .105)	3	Yellow	1,900 – 6,755
D-150-0239-RT	29.2 (1.150)	24.13 (.950)	2.80 (.110)	3	Blue	14.60 (.575)	1.60 – 1.78 (.063 - .070)	3	Blue	779 – 2,680
D-150-0241-RT	29.2 (1.150)	24.13 (.950)	4.32 (.170)	2	Yellow	14.60 (.575)	2.41 – 2.67 (.095 - .105)	2	Yellow	1,900 – 6,755
D-150-0242-RT	34.3 (1.350)	26.67 (1.050)	6.10 (.240)	1	Clear	14.09 (.555)	3.28 Min (.129 Min)	1	N/A	5,180 – 13,100
D-150-0243-RT	29.2 (1.150)	24.13 (.950)	2.80 (.110)	1	Blue	14.60 (.575)	1.60 – 1.78 (.063 - .070)	1	Blue	779 – 2,680
D-150-0244-RT	29.2 (1.150)	24.13 (.950)	2.80 (.110)	2	Blue	14.60 (.575)	1.60 – 1.78 (.063 - .070)	2	Blue	779 – 2,680
D-150-0245-RT	29.2 (1.150)	24.13 (.950)	2.80 (.110)	2	Blue	14.60 (.575)	1.60 – 1.78 (.063 - .070)	2	Blue	779 – 2,680
D-150-0246-RT	29.2 (1.150)	24.13 (.950)	2.80 (.110)	4	Blue	14.60 (.575)	1.60 – 1.78 (.063 - .070)	4	Blue	779 – 2,680
D-150-0247-RT	29.2 (1.150)	24.13 (.950)	4.32 (.170)	2	Yellow	14.60 (.575)	2.41 – 2.67 (.095 - .105)	2	Yellow	1,900 – 6,755
D-150-0248-RT	29.2 (1.150)	24.13 (.950)	4.32 (.170)	3	Yellow	14.60 (.575)	2.41 – 2.67 (.095 - .105)	3	Yellow	1,900 – 6,755
D-150-0249-RT	34.3 (1.350)	26.67 (1.050)	6.10 (.240)	2	Clear	14.09 (.555)	3.28 Min (.129 Min)	1	N/A	5,180 – 13,100
D-150-0252-RT	34.3 (1.350)	26.67 (1.050)	6.10 (.240)	2	Clear	14.09 (.555)	3.28 Min (.129 Min)	1	N/A	5,180 – 13,100

MATERIALS

1. CABLE SEALING SLEEVE:

INSULATION SLEEVE: Heat-shrinkable, transparent blue, radiation cross-linked modified fluoropolymer.

Color: black with a yellow stripe

MELTABLE INSERTS: Environment resistant modified thermoplastic fluoropolymer. Color: blue.

2. MELTABLE INSERT: Environment resistant modified thermoplastic fluoropolymer. Color: light blue.

3. JUMPER BRAID: Tin-plated copper alloy.

4. SOLDER SLEEVES:

INSULATION SLEEVE: Heat-shrinkable, transparent blue, radiation cross-linked modified fluoropolymer.

SOLDER PREFORM WITH FLUX:

SOLDER: TYPE Sn96 per ANSI / J-STD-006.

FLUX: TYPE ROL1 per ANSI / J-STD-004.

MELTABLE INSERT: Environment resistant modified thermoplastic fluoropolymer. Color: blue.

5. SOLDER SLEEVES:

INSULATION SLEEVE: Heat-shrinkable, transparent blue, radiation cross-linked modified fluoropolymer.

SOLDER PREFORM WITH FLUX:

SOLDER: TYPE Sn96 per ANSI / J-STD-006.

FLUX: TYPE ROL1 per ANSI / J-STD-004.

MELTABLE INSERT: Environment resistant modified thermoplastic fluoropolymer. Color: blue.

DOCUMENT NO.: D-150-02XX-RT	REV: C3	REVISED PER. ECO-21-003171	DATE: March 8, 2021	SHEET: 4 of 5
---------------------------------------	-------------------	-------------------------------	------------------------	------------------

CUSTOMER DRAWING

6. CONDUCTOR SEALING SLEEVE: Heat-shrinkable, transparent blue, radiation cross-linked modified fluoropolymer, containing two environment resistant sealing rings. Transparent blue. Sealing Rings Color: See Table.
7. CRIMP SPLICE: Tin-plated copper alloy. Color Code: See Table

APPLICATION

1. These kits are designed to make an environment-resistant, 1 to 1, 1 to 2, or 2 to 2 in-line splice in shielded single and twisted pair cables having tin, or silver plated shield and conductors and insulations rated for 135°C minimum.
2. Temperature rating: -55°C to +150°C.
3. For product selection and installation procedures refer to the applicable sections of TE Connectivity RPIP-1103.

DOCUMENT NO.: D-150-02XX-RT	REV: C3	REVISED PER. ECO-21-003171	DATE: March 8, 2021	SHEET: 5 of 5
---------------------------------------	-------------------	-------------------------------	------------------------	------------------