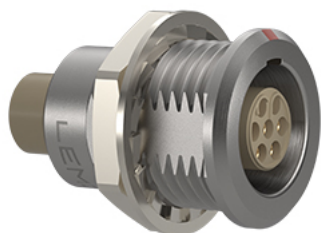


Standard



*Image for illustrative purpose only*

## Summary

[Request a quote](#)

[BKT series](#)

[Customer Drawing](#)

Number of contacts Low Voltage	6
Wire Size/AWG	26 - 22
Gender	Standard
Socket / Receptacle	Socket / Receptacle - Fixed Panel Front Mounted
Locking system	Push-pull
Panel Drill Hole	M12
Jacket cable outside diameter [mm]	1.00 - 10.60 mm
Size	1B

[https://www.lemo.com/int\\_en/solutions/originals/b-indoor-keyed/egg-1b-306-cym.html](https://www.lemo.com/int_en/solutions/originals/b-indoor-keyed/egg-1b-306-cym.html)

LEMO products and services are provided "as is". LEMO makes no warranties or representations with regard to LEMO product & services or use of them, express, implied or statutory, including for accuracy, completeness, or security. The user is fully responsible for his products and applications using LEMO components.

Suggested matching part

FGG.1B.306.CLCM27Z  
FWG.1B.306.CYC

---

Series

B - Indoor keyed

[https://www.lemo.com/int\\_en/solutions/originals/b-indoor-keyed/egg-1b-306-cym.html](https://www.lemo.com/int_en/solutions/originals/b-indoor-keyed/egg-1b-306-cym.html)

LEMO products and services are provided "as is". LEMO makes no warranties or representations with regard to LEMO product & services or use of them, express, implied or statutory, including for accuracy, completeness, or security. The user is fully responsible for his products and applications using LEMO components.

# Technical details

## Electrical Configuration

Number of contacts Low Voltage	6
Contact Termination Low voltage	Crimp
R (max)	6.1 mOhm
Insert configuration value	1B.306 - 6 Low Voltage
Insulator	Y: PEEK for crimp contacts
Rated current	7 A
Vtest (contact-contact)	2 kV (DC)
Vtest (contact-shell)	2 kV (DC)
Contact retention	22 N
Max. Conductor	0.34 mm <sup>2</sup> (AWG 22)
Min. Conductor	0.14 mm <sup>2</sup> (AWG 26)
Bucket Dia.	0.8 mm (0.031in)
Contact Dia.	0.7 mm (0.028in)
Wire Size/AWG	26 - 22
Gender	Standard

## Form & Material

Shell style / Model id	EG - Fixed receptacle, nut fixing
Socket / Receptacle	Fixed Panel Front Mounted
Housing material	Brass (chrome plated [SAE AMS 2460]) shell and collet nut, nickel plated [SAE AMS QQ N 290] brass latch sleeve and mid pieces
Locking system	Push-pull
Keying	G: 1 key (alpha=0, plug: male contacts, receptacle: female contacts)
Colour	Grey
Weight	10.28 g
Panel Drill Hole	M12

[https://www.lemo.com/int\\_en/solutions/originals/b-indoor-keyed/egg-1b-306-cym.html](https://www.lemo.com/int_en/solutions/originals/b-indoor-keyed/egg-1b-306-cym.html)

LEMO products and services are provided "as is". LEMO makes no warranties or representations with regard to LEMO product & services or use of them, express, implied or statutory, including for accuracy, completeness, or security. The user is fully responsible for his products and applications using LEMO components.

## Environment

Technical domain	Audio Video, Energy and Industrial, Medical, Semiconductor, Specialties and Other, Test and Measurement, Transportation, Aerospace and UAV
Environmental sealing (IP rating)	IP50
Endurance	5000 mating cycles
Temperature range	-55°C / +250°C (max. temperature valid for short periods of use.)
Climatic Category	55/175/21
Humidity (max)	<=95% [at 60 deg C /140 F]
Shielding (min)	75 dB (10 MHz)
Shielding (min)	40 dB (1 GHz)
Shock Resistance	100 g [ 6 ms]
Vibration	15 g [10 Hz - 2000 Hz]
Salt Spray Corrosion	>1000 hr
<b>Cable fixation</b>	
Jacket cable outside diameter [mm]	1.00 - 10.60 mm

# Recommended By Lemo

## Contacts

Replacement contact	<a href="#">EGG.1B.655.ZZM</a>
---------------------	--------------------------------

## Caps

Compatible cap	<a href="#">BRE.1S.200.NAS</a>
Cap 2	<a href="#">BRE.1S.200.NAV</a>
Plastic Cap	<a href="#">BRA.1B.200.PCSG</a>
Cap BRR	<a href="#">BRR.1B.200.BSG</a>
Soft Cap	<a href="#">BEZ.1B.200.SCN</a>

## Tools

Spanner	<a href="#">DCA.91.201.4TN</a>
Positionner	<a href="#">DCE.91.071.BVM</a>
Extraction tool	<a href="#">DCC.07.04B.LAG</a>
Crimp tool	<a href="#">DPC.91.701.V</a>

[https://www.lemo.com/int\\_en/solutions/originals/b-indoor-keyed/egg-1b-306-cym.html](https://www.lemo.com/int_en/solutions/originals/b-indoor-keyed/egg-1b-306-cym.html)

LEMO products and services are provided "as is". LEMO makes no warranties or representations with regard to LEMO product & services or use of them, express, implied or statutory, including for accuracy, completeness, or security. The user is fully responsible for his products and applications using LEMO components.

# Cables

Cable PartNumber	Material	Colour	Cable image
CMN.06.T26.037QGZE	TPR (medical)	Grey	
CMN.06.T28.031PGCE	PVC	GREY	
CMN.06.T28.031PGZE		grey	
CMN.06.T28.031PNCE	PVC	Black	
CMN.06.T28.031PNZE			
CMN.06.T28.042QBCE	TPR (medical)		
CMN.06.T28.044PGZE		grey	
CMN.06.T28.044PNZE			
106220	PVC	Black	
106240	PTFE	White	
12080	PVC	Grey	
160140	PVC	Grey	
160240	PVC	Black	
160260	PVC	Black	
260250	PVC	Grey	
60260	PTFE	White	
6280	PVC	Black	

[https://www.lemo.com/int\\_en/solutions/originals/b-indoor-keyed/egg-1b-306-cym.html](https://www.lemo.com/int_en/solutions/originals/b-indoor-keyed/egg-1b-306-cym.html)

LEMO products and services are provided "as is". LEMO makes no warranties or representations with regard to LEMO product & services or use of them, express, implied or statutory, including for accuracy, completeness, or security. The user is fully responsible for his products and applications using LEMO components.