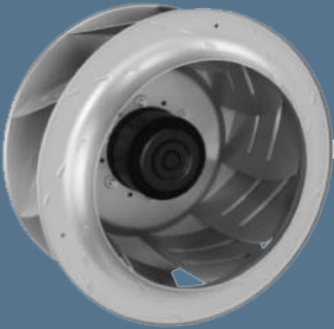


# EC centrifugal fans

backward curved, single inlet Ø 500



### Highlights:

- 9-blade fan, 3-phase fan motor
- Output: 10 VDC, max.10 mA, 20 VDC, max. 50 mA, slave 0-10 V
- Input: sensor 0-10 V or 4-20 mA, 24 V external programming, 0-10 VDC/ PWM control
- Integrated PID controller along with RS485 MODBUS RTU technology
- Over-temperature protected electronics / motor
- Soft start, alarm relay, motor current limit, PFC passive, line undervoltage / phase failure detection
- Control interface with SELV potential safely disconnected from the mains

**Material:** Impeller: Aluminum sheet  
Rotor: Coated in black  
Electronic housing: Die-cast aluminum

Mounting position: Shaft horizontal or rotor on bottom; rotor on top on request

Condensate discharge holes: Rotor-side

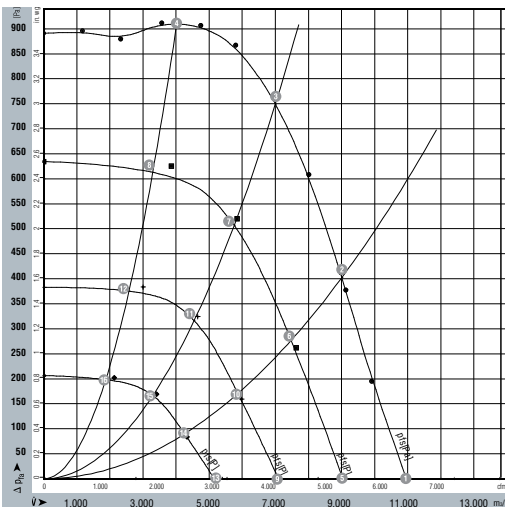
**Direction of rotation:** Clockwise, seen on rotor

### Nominal Data

Type	K Module	Motor	VAC	Hz	Watts	RPM	A	°C	lbs	Ingress protection rating	Electrical wiring diagram	UL-Approval
R3G500-AG34-63F	EG1R-240-500-30	M3G150-FF	200...240	50/60	2,700	1,700	8.3	-25...55	55	IP54	A	Yes
R3G500-AG25-64F	EG1R-480-500-30	M3G150-FF	380...480	50/60	2,500	1,700	3.9	-25...60	55	IP54	A	Yes

(1) Nominal data at maximum load.

### Curves



Measurement: LU-134784  
Measurement: LU-116713  
Measurement: LU-118204  
Measurement: LU-118205  
Measurement: LU-118206

Air performance measured as per: ISO 5801, Installation category A, without protection against accidental contact.

Suction-side noise levels: L<sub>WA</sub> as per ISO 13347, L<sub>PA</sub> measured at 1m distance to fan axis.

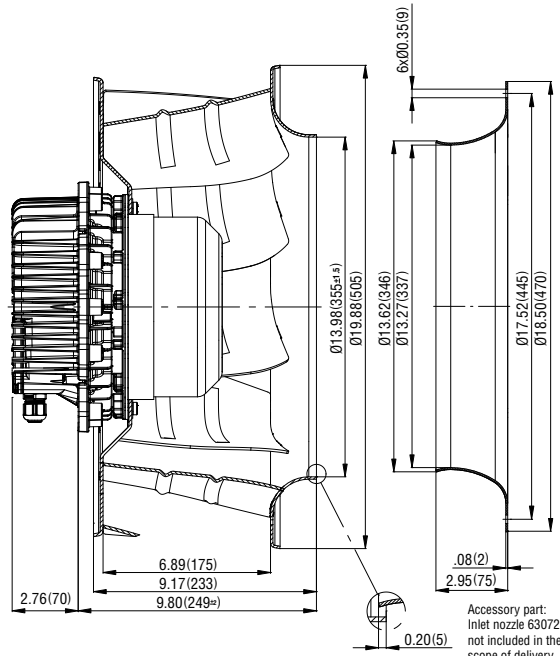
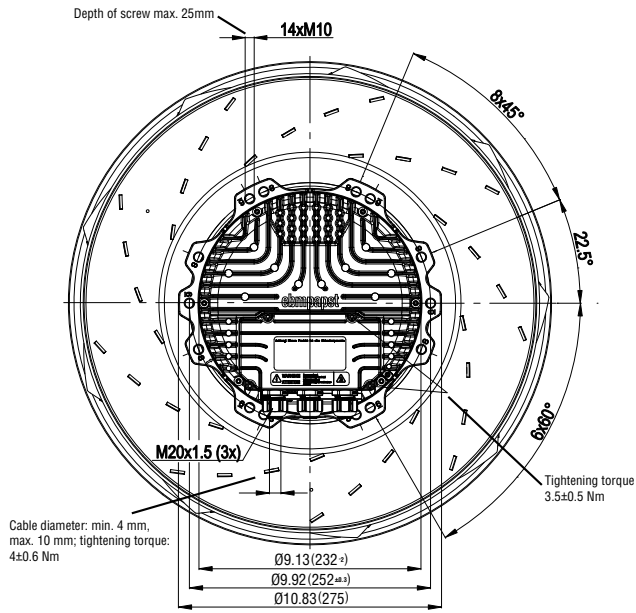
The values given are valid under the measuring conditions mentioned and may vary according to the actual installation situation.

With any deviation to the standard set-up, the specific values have to be checked and reviewed once installed or fitted.

For detailed information on the measuring set-up, please contact ebm-papst.

	n rpm	Pe W	I A (460V)	I A (230V)	L <sub>WA</sub> dB(A)
(A) 1	1700	1909	2.8	3.6	91
(A) 2	1700	2329	3.5	7.0	86
(A) 3	1700	2700	3.9	7.8	82
(A) 4	1700	2382	3.2	6.4	81
(A) 5	1400	1065	1.5	3.0	87
(A) 6	1400	1294	1.9	3.8	82
(A) 7	1400	1436	2.0	4.0	78
(A) 8	1400	1323	1.6	3.2	77
(A) 9	1100	516	0.8	1.6	82
(A) 10	1100	628	1.0	2.0	77
(A) 11	1100	697	1.1	2.2	73
(A) 12	1100	642	0.9	1.8	72
(A) 13	800	199	0.4	0.8	75
(A) 14	800	241	0.5	1.0	70
(A) 15	800	268	0.5	1.0	66
(A) 16	800	247	0.5	1.0	65

# R3G500-AGXX-XXF



# EGIR-XXX-500-30

