

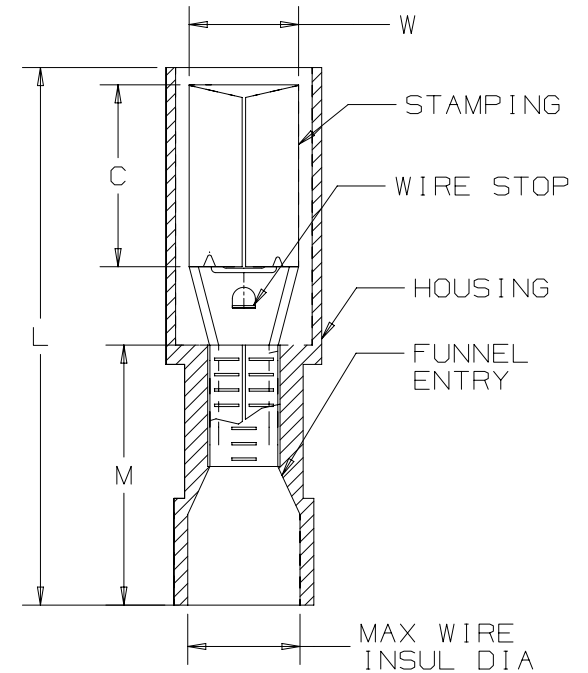
THIS COPY IS PROVIDED ON A RESTRICTED BASIS AND IS NOT TO BE USED IN ANY WAY DETRIMENTAL TO THE INTERESTS OF PANDUIT CORP.

| PANDUIT PART # | WIRE RANGE AWG [mm ²] | COLOR | DIMENSIONS in. [mm] | | | | MAX WIRE INSUL DIA | WIRE STRIP LENGTH in [mm] + 1/32 [0.8] -0 | TOOLS |
|----------------|-----------------------------------|-------|---------------------|---------------|---------------|---------------|--------------------|---|----------|
| | | | L ± .04 [1,1] | W ± .01 [0,3] | C ± .02 [0,4] | M ± .02 [0,6] | | | |
| EBNF18-4FIB | #22-16 [0.5-1.5] | RED | .99 [25.2] | .15 [3.9] | .28 [7.0] | .43 [11.0] | .145 [3.7] | 9/32" [6.8] | KST2000C |
| EBNF14-4FIB* | #16-14 [1.5-2.5] | BLUE | .99 [25.2] | .15 [3.9] | .28 [7.0] | .43 [11.0] | .165 [4.2] | | |

*NOT UL RECOGNIZED

NOTES:

- UL RECOGNIZED FOR:
 - A. STRANDED COPPER WIRE ONLY - INTERNAL WIRING
 - B. NOT FOR INTERRUPTING CURRENT
 - C. 185°F (85°C) MAX TEMP RATING
 - D. 600V MAX VOLTAGE RATING
- MATERIAL:
 - A. STAMPING - .016" [0.4] THICK BRASS, TIN PLATED
 - B. HOUSING - NYLON
- SEE WWW.PANDUIT.COM FOR PACKAGE QUANTITIES
- DIMENSIONS IN BRACKETS ARE METRIC EQUIVALENT.



| | | | |
|---|---------------------|---|-------|
| TITLE | | STRONGHOLD FEMALE BULLET CONNECTORS (156 SERIES) FULLY NYLON INSULATED, #22-14 AWG | |
| CUSTOMER DRAWING | | | |
| ITEM REVISION NAME | 00123SSP/00 | PANDUIT | |
| DATASET FILE NAME | 00123SSP/00 | | |
| UNLESS OTHERWISE SPECIFIED, DIMENSIONAL TOLERANCES ARE: IN [mm] | | MATERIAL: | |
| .x ± .1 [2.54] | .xxx ± .005 [0.127] | SEE NOTES | |
| .xx ± .01 [0.25] | ANGLES ± 5° | DRAWING NUMBER: | |
| THIRD ANGLE PROJECTION | | 00123SSP-DC | |
| DRAWN BY | DATE | CHK | SCALE |
| JHNU | 2/18 | | NONE |
| REV | DATE | BY | CHK |
| | | | |
| DESCRIPTION | | ECN | |
| | | | |
| SHT 1 OF 1 | | A | |

D10100DA/20