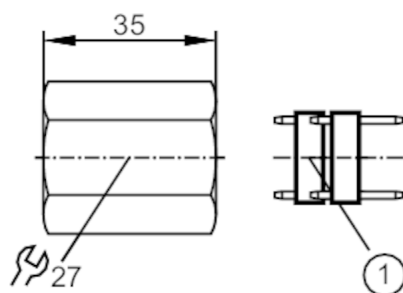


E30017



Mounting set for temperature sensors

MOUNTING SET



1 intermediate ring

Application

Installation for direct connection of temperature sensor to control monitor; (TT / TR)

Mechanical data

Weight [g] 117.8

Type of mounting for direct connection of temperature sensor to control monitor; (TT / TR)

Material stainless steel (1.4305 / 303)

Remarks

Pack quantity 1 pcs.