

# DS

## Door Interlock

Snap-action

### DS

Characteristics	■ enclosed snap-action switching ■ long overtravel ■ tapped plunger ■ screw terminals
Rating	250 VAC, 15 A
Dimensions (mm)	48 × 51 × 16
Actuator	■ plain spindle plunger
Approvals	UL, CSA



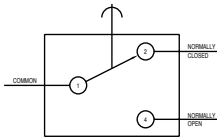
### Preferred Range

Ordering Reference	Actuating Force (N)	Actuating Force (ozf)	Sealing	Operating pos. (mm)	Operating pos. (in)	Terminal	Circuit	Actuator	Contacts	Electrical rating
DS1UL	13.3	48.0	IP40	6	0.580	Solder	CO	Plunger	Ag	Up to 250 VAC, 15 A
DS3UL	13.3	48.0	IP40	6	0.580	Solder	CO	Plunger	Ag	Up to 250 VAC, 15 A

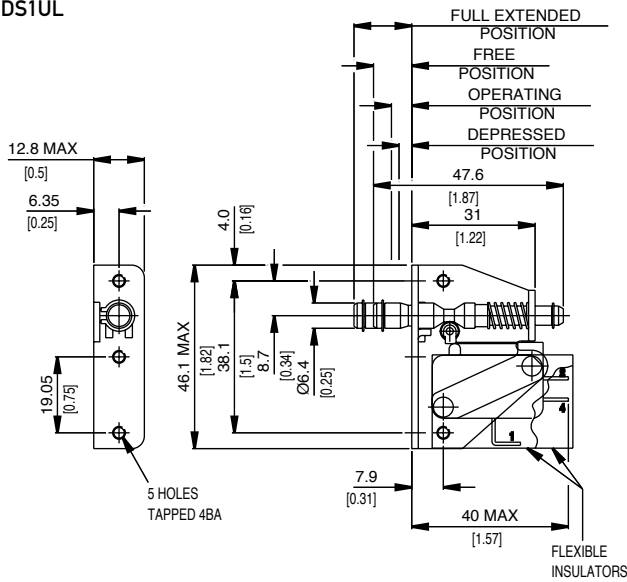
## Specifications

Housing	DS3UL only - Flame retardant polycarbonate
Base plate	Mild steel, zinc-plated
Plunger	Stainless steel
Mechanism	Single pole change-over
Contacts	Silver
Terminals	Solder tags - Silver-plated brass - common (1), Brass - normally closed (2), normally open (4)
Temperature range	-10°C to +85°C
Mechanical life	10 <sup>6</sup> cycles minimum (impact free actuation)
Type of protection	IP40 (enclosure)

Circuit diagram



Dimensions DS1UL

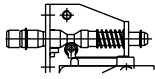


## Recommended maximum electrical ratings

Voltage (max)	Resistive load (A)	Inductive load	Horsepower	Approval
250 VAC	15 (0.75 pf)	-	-	UL 1054/CSA 22.2 No. 55 - 6,000 operations
0 - 15 VDC	10	-	-	General rating - 50,000 operations
15 - 30 VDC	7	-	-	General rating - 50,000 operations

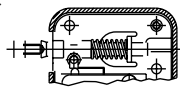
### Operating Characteristics

Actuator	Reference	Actuating Force Maximum		Free Position Maximum		Operating Position Maximum		Fully extended Position Maximum		Depressed Position Maximum	
		(N)	(ozf)	(mm)	(in)	(mm)	(in)	(mm)	(in)	(mm)	(in)
Spring Plunger	DS1UL	13,3	48,00	10,5	0,41	6	0,23	14,5	0,58	3,2	0,14



Overtravel: Plunger can be depressed flush with housing. The housing should not be used as an end stop.

Spring Plunger	DS3UL	13,3	48,00	10,5	0,41	6	0,23	14,5	0,58	3,2	0,14
----------------	-------	------	-------	------	------	---	------	------	------	-----	------



Overtravel: Plunger can be depressed flush with housing. The housing should not be used as an end stop.

For the convenience of maintenance engineers who must have full working conditions with the door open, DS units are fitted with a lock-on device which overrides the interlock while working. When the door is open, the plunger can be moved down and out to an extended position which will cause the switches to operate. At the conclusion of the maintenance work, full interlock facilities are restored automatically when the door is closed.

### Type coding key for standard products

Basic type	DS	Example: DS	1	UL
Switch variants	1	Open bracket type using one miniature type insert switch		
	3	plastic housing		
Approvals	UL	UL and CSA approved		