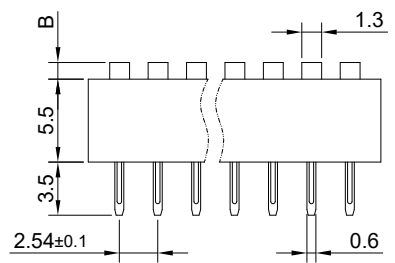
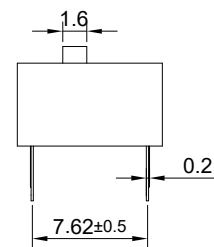


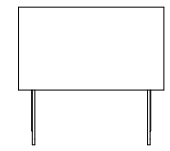
FOR 客户名称	APPROVED 客户确认签字	ATTN 销售负责人



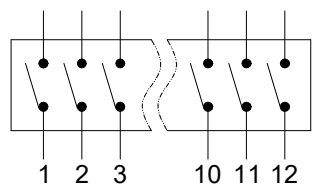
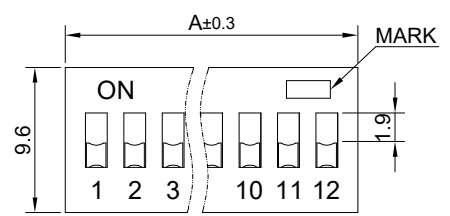
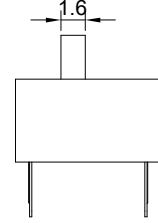
EXTEND ACTUATOR(E)



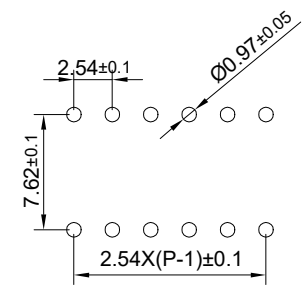
RECESSED ACTUATOR(R)



EXTEND ACTUATOR(L)



WIRING DIAGRAM



PCB LAYOUT

ACTUATOR DIM B:

TYPE	VALUE
EXTEND	1.1
RECESSED	0
HEIGHTEN	2.9

NUMBER	DS★01	DS★02	DS★03	DS★04	DS★05	DS★06	DS★07	DS★08	DS★09	DS★10	DS★12
DIM A (mm)	3.54	6.64	9.18	11.72	14.26	16.8	19.34	21.88	24.42	26.96	32.04

PART NUMBER: DS★-◇◆-△

"★"	ACTUATOR
E	EXTEND ACTUATOR
R	RECESSED
L	HEIGHTEN

"◇"	POSITION
01~12	1To12
11 EXCLUDED	

"◆"	HOUSING COLOR
R	RED
B	BLUE
N	BLACK

"△"	PLATING
GT	SEMI TIN GOLD
GA	GOLD

MATERIALS:
 1.COVER: PBT.
 2.HOUSING: PBT.
 3.ACTUATOR: PBT.
 4.TERMINALS SEAL: EPOXY RESIN.
 5.TERMINALS: BRASS, GOLD OVER NICKEL PLATED.

SPECIFICATIONS:
 1.CONTACT RATING: SWITCHING: 25mA AT 24VDC, NON SWITCHING: 100mA AT 50VDC.
 2.INSULATION RESISTANCE: 100MΩ AT 500VDC.
 3.CONTACT RESISTANCE: INITIAL: 50mΩ Max. AFER LIFE TEST: 100 mΩ Max.
 4.DIELECTRIC STRENGTH: 500VAC 50Hz /1Min.
 5.OPERATING FORCE:1000gf Max.
 6.INTERELECTRODE CAPACITANCE: <5pf, 1MHz±10kHz.
 7.ELECTRICAL LIFE:2000 cycles.
 8.OPERATING TEMPERATURE: -40°C TO +85°C (NO ICE).
 9.SOLDERING:
 HAND SOLDERING: SOLDERING IRON 30W AT UNDER 320°C/2SEC, Max.
 WAVE SOLDERING: TEMPERATURE: 260°C/5SEC, Max,
 KEEP ALL ACTUATORS IN "OFF" POSRTION DURING.
 10.ALL DIP SWITCHES ARE SHIPPED IN TUBE WITH "OFF" POSITION.
 11.GENERAL TOLERANCE:0-18mm=±0.25, 18-80mm=±0.52.

BRAND 品牌		红波按钮制造有限公司			
ONPOW 欧宝龙®		ONPOW PUSH BUTTON MANUFACTURE CO.,LTD.			
TITLE 名称	DIP SWITCH PITCH2.54	UNIT 单位	mm		
DWG NO. 图号	DS SERIES	SCALE 比例	2 : 1	SIZE 图纸	A4
FILE NAME 档案名称	DS.DWG	DRAWN 制图	HCP 2026/02/09	SHEET 张	1/1
		REV. 版本	V1.0		