

DRCP25-86PCC-GC03 ✓ ACTIVE

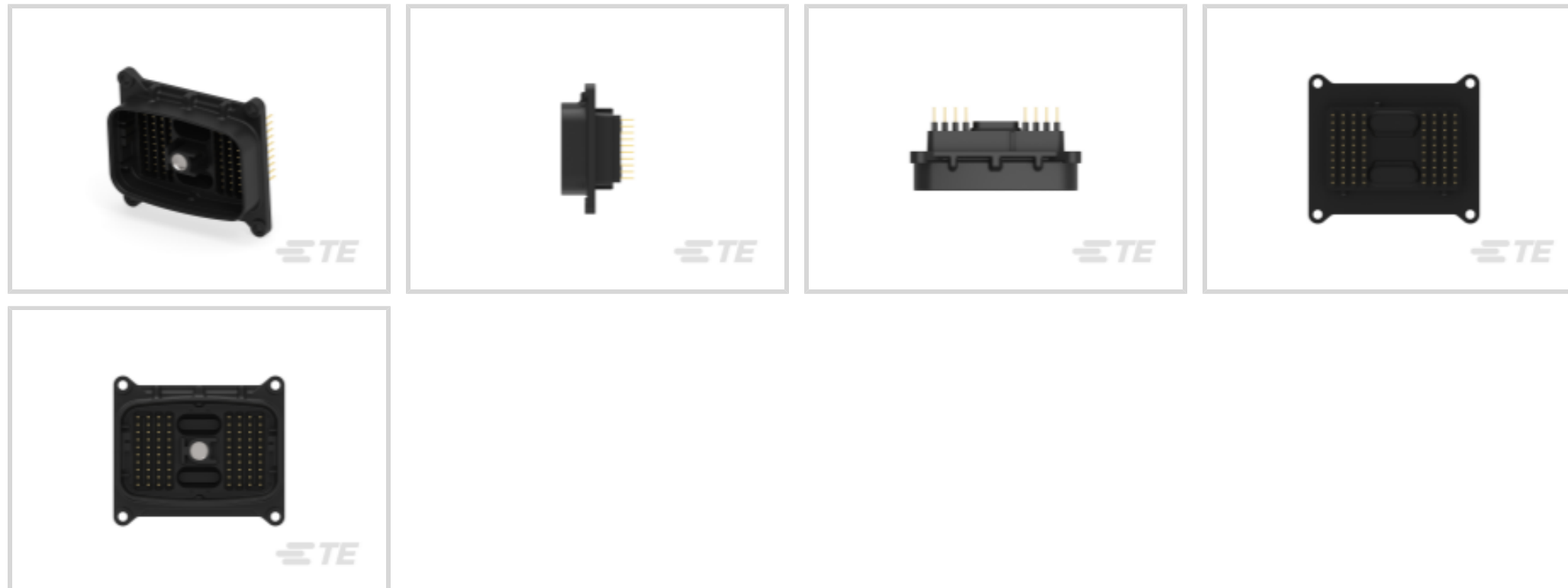
TE Internal #: DRCP25-86PCC-GC03

Vertical, Wire-to-Board, 80 Position, 4 mm [.157 in] Centerline,
Gold, Through Hole - Solder, Sealable, Signal, Black, Box

[View on TE.com >](#)



Connectors > PCB Connectors > PCB Headers & Receptacles



Connector System: **Wire-to-Board**

Number of Positions: **80**

Number of Rows: **2, 10**

Centerline (Pitch): **4 mm [.157 in]**

PCB Mount Orientation: **Vertical**

Features

Product Type Features

Mixed & Hybrid Header	Yes
Connector System	Wire-to-Board
Sealable	Yes
Connector & Contact Terminates To	Wire & Cable

Configuration Features

Number of Sections	2
Number of Signal Positions	80
Number of Positions	80
Number of Rows	2, 10
PCB Mount Orientation	Vertical

Electrical Characteristics

Voltage Rating (Max)	250 VAC
Nominal Voltage Architecture	12 V, 24 V
Operating Voltage	250 VAC

Body Features



Connector & Keying Code	CC
-------------------------	----

Primary Product Color	Black
-----------------------	-------

Contact Features

Mating Pin Diameter	1.02 mm, 2.45 mm [.04 in][.094 in]
---------------------	------------------------------------

Contact Mating Area Plating Material	Gold
--------------------------------------	------

Contact Current Rating (Max)	7.5 A, 25 A
------------------------------	-------------

Termination Features

Termination Method to Printed Circuit Board	Through Hole - Solder
---	-----------------------

Mechanical Attachment

Mounting Holes	With
----------------	------

Mating Retention	With
------------------	------

Panel Mount Feature	With
---------------------	------

PCB Mount Retention Type	Mounting Screw
--------------------------	----------------

Mating Retention Type	Locking Interface
-----------------------	-------------------

Connector Mounting Type	Panel Mount
-------------------------	-------------

PCB Mount Alignment	With
---------------------	------

PCB Mount Retention	Without
---------------------	---------

Housing Features

Centerline (Pitch)	4 mm [.157 in]
--------------------	----------------

Dimensions

Connector Length	44.54 mm [1.753 in]
------------------	---------------------

Connector Width	91.6 mm [3.606 in]
-----------------	--------------------

PCB Thickness (Recommended)	.78 – 3.18 mm [.031 – .125 in]
-----------------------------	--------------------------------

Profile Height from PCB	31.9 mm [1.256 in]
-------------------------	--------------------

Usage Conditions

Operating Temperature (Max)	125 °C [257 °F]
-----------------------------	-----------------

Operating Temperature Range	-55 – 125 °C [-67 – 257 °F]
-----------------------------	-----------------------------

Operation/Application

Shielded	No
----------	----

Circuit Application	Signal
---------------------	--------

Industry Standards

Degree of Protection	Not Tested
----------------------	------------



UL Flammability Rating Not tested

Packaging Features

Packaging Quantity 48
 Packaging Method Box

Product Compliance

[For compliance documentation, visit the product page on TE.com>](#)

EU RoHS Directive 2011/65/EU	Compliant
EU ELV Directive 2000/53/EC	Compliant
China RoHS 2 Directive MIIT Order No 32, 2016	No Restricted Materials Above Threshold
EU REACH Regulation (EC) No. 1907/2006	Current ECHA Candidate List: JUNE 2024 (241) Candidate List Declared Against: JUNE 2023 (235) SVHC > Threshold: Octamethylcyclotetrasiloxane (D4) (.5% in Component Part) Dodecamethylcyclohexasiloxane (D6) (.5% in Component Part) Decamethylcyclopentasiloxane (D5) (.5% in Component Part) <small>Article Safe Usage Statements: Wash thoroughly after handling. Recycle if possible and dispose of the article by following all applicable governmental regulations relevant to your geographic location.</small>
Halogen Content	BFR/CFR/PVC Free, but Br/Cl >900 ppm in other sources.
Solder Process Capability	Not reviewed for solder process capability

Product Compliance Disclaimer

This information is provided based on reasonable inquiry of our suppliers and represents our current actual knowledge based on the information they provided. This information is subject to change. The part numbers that TE has identified as EU RoHS compliant have a maximum concentration of 0.1% by weight in homogenous materials for lead, hexavalent chromium, mercury, PBB, PBDE, DBP, BBP, DEHP, DIBP, and 0.01% for cadmium, or qualify for an exemption to these limits as defined in the Annexes of Directive 2011/65/EU (RoHS2). Finished electrical and electronic equipment products will be CE marked as required by Directive 2011/65/EU. Components may not be CE marked. Additionally, the part numbers that TE has identified as EU ELV compliant have a maximum concentration of 0.1% by weight in homogenous materials for lead, hexavalent chromium, and mercury, and 0.01% for cadmium, or qualify for an exemption to these limits as defined in the Annexes of Directive 2000/53/EC (ELV). Regarding the REACH Regulation, the information TE provides on SVHC in articles for this part number is based on the latest European Chemicals Agency (ECHA) 'Guidance on requirements for substances in articles' posted at this URL: <https://echa.europa.eu/guidance-documents/guidance-on-reach>

Compatible Parts

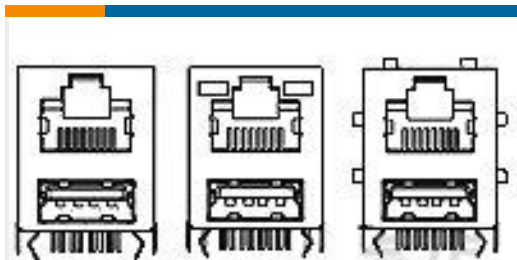


TE Part # DRCP28-86SC
PLG, 86P, BLK, 12/20, C



TE Part # DRCPF-86A-1
FLANGE, MOUNT, 86P, BLK

Customers Also Bought



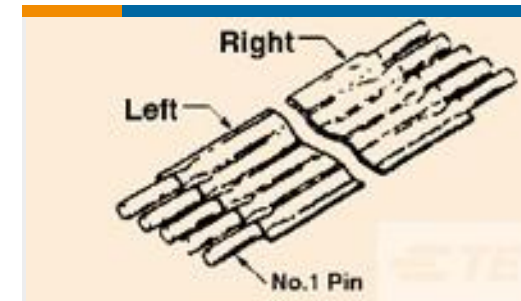
TE Part #5-1775855-1
RJ45 OVER USB W/ 6 PNL-GND &
HTD G/F



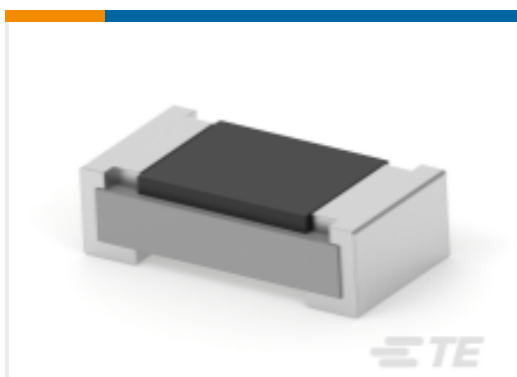
TE Part #9-1437653-4
6PCV-16-719=6PCV ASSEMBLY



TE Part #DRCP25-86PBB-GC03
HDR, 86P, BLK, ST, 12/20, AU/NI/CU,
BB



TE Part #6-1437212-2
FSK-22A-20



TE Part #2-2176237-5
CPF A 0603 680R 0.1% 25PPM 5K RL



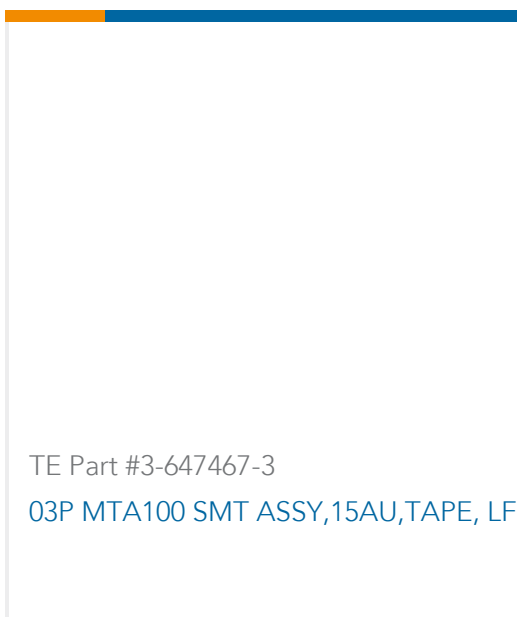
TE Part #DRCP25-126PAA-G003
HDR, 126P, BLK, ST, 12/20, AU/NI/CU,
AA



TE Part #DRCP25-86PAA-G003
HDR, 86P, BLK, ST, 12/20, AU/NI/CU,
AA



TE Part #1617053-7
SF5A5201J01 = SF5A RELAY



TE Part #3-647467-3
03P MTA100 SMT ASSY,15AU,TAPE, LF

Documents

Product Drawings

HDR, 86P, BLK, ST, 12/20, AU/NI/CU, CC

English

CAD Files

3D PDF

3D

Customer View Model

ENG_CVM_CVM_DRCP25-86PCC-GC03_C_c-drcp25-86pcc-gc03-c.2d_dxf.zip



English

Customer View Model

[ENG_CVM_CVM_DRCP25-86PCC-GC03_C_c-drcp25-86pcc-gc03-c.3d_igs.zip](#)

English

Customer View Model

[ENG_CVM_CVM_DRCP25-86PCC-GC03_C_c-drcp25-86pcc-gc03-c.3d_stp.zip](#)

English

By downloading the CAD file I accept and agree to the [Terms and Conditions](#) of use.

Product Specifications

Product Specification

English