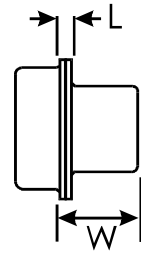
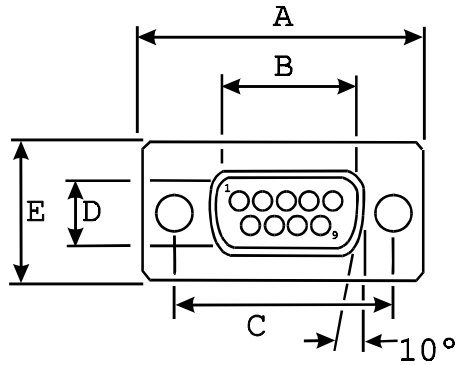
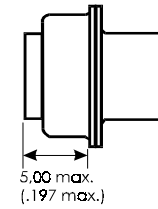


This is issued in strict confidence on condition that it is not used as a basis for manufacture or sale, and that it is not copied, reprinted or disclosed to a third party either wholly or in part without prior written consent of ITT Cannon.

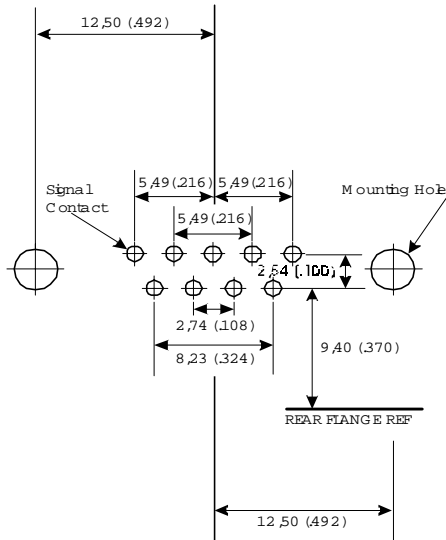


No mounting hardware selected
with 3,05 (.120) mounting hole

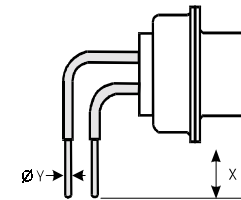
Signal contacts
not shown for clarity



A ± 0,38 (.015)	B ± 0,13 (.005)	C ± 0,13 (.005)	D ± 0,13 (.005)	E ± 0,38 (.015)	L ± 0,1 (.004)	W ± 0,25 (.012)	
30,81 (1.213)	16,92 (.666)	24,99 (.984)	8,36 (.329)	12,55 (.494)	0,9 (.035)	6,85 (.270)	



Right angle signal contacts



Signal contact diameter	Signal contact length from bottom edge of shell
Y ± 0,04 (.002)	X ± 0,3 (.012)
0,64 (.025)	4,70 (.185)

DESCRIPTION	MATERIAL	FINISH
Insulator	Polyester	None, (Color Dark Green)
Shells	Steel	Tin, with grounding dimples
Signal Contacts	Copper alloy	Gold over Ni in mating area, Tin on balance

No Hardware Specified	PCB Signal cont Ø (9)
Mounting Holes Ref Only	1,05 (.041) ± 0,05 (.002)

Unless otherwise specified, dimensions are in mm & (in.)
Tolerances are (.XXX = mm)
Decimals Angles
.X ± 0,20 (.008) X° ± 1.0°
.XX ± 0,10 (.004)
.XXX ± 0,05 (.002)

Issue Date: 26-Aug-99 | Cannon | ITT Industries

CONNECTOR, PLUG, ELECTRICAL
D-SUBMINIATURE 9 POSITION RIGHT ANGLE PCB

PART NO. **DE9P1A0NK87**

NOTE: DO NOT MAKE ASSUMPTIONS REGARDING HOLE LOCATIONS, CHECK EACH DIMENSION