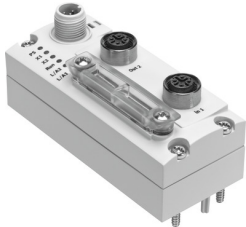


Bus node CTEU-EC

Part number: 572556

FESTO



Data sheet

Feature	Value
Type code	CTEU
Dimensions W x L x H	40 mm x 91 mm x 50 mm
Width dimension	40 mm
Type of mounting	On electrical interface On electrical sub-base
Product weight	90 g
Protocol	EtherCAT
Fieldbus interface, type	Ethernet
Fieldbus interface, protocol	EtherCAT
Fieldbus interface, function	Bus connection, incoming/forwarding
Fieldbus interface, connection type	2x socket
Fieldbus interface, connection technology	M12x1, D-coded as per EN 61076-2-101
Fieldbus interface, number of poles/wires	4
Fieldbus interface, connection pattern	00995716
Fieldbus interface, galvanic isolation	yes
Fieldbus interface, transmission rate	100 Mbit/s
Internal cycle time	1 ms per 1 byte of user data
Max. address capacity inputs	16 byte
Max. address capacity outputs	16 byte
Power supply, function	Electronics and load
Power supply, type of connection	Plug
Power supply, connection technology	M12x1, A-coded as per EN 61076-2-101
Power supply, number of pins/wires	5
Power supply, connection pattern	00995383
Diagnostics	Communication error System diagnostics Undervoltage
Parameterization	Activate diagnostics Fail-safe and idle response
Additional functions	Acyclic data access via "SDO" Diagnostic object Emergency message Modular Device Profile (MDP)
Configuration support	XML file
Control elements	DIL switch
LED display (product-specific)	PS: operating voltage for electronics and load supply X1: module system status at I-Port 1 X2: module system status at I-Port 2

Feature	Value
LED display (bus-specific)	L/A1: network active, port 1 L/A2: network active, port 2 Run: communication status
DC operating voltage range	18 V ... 30 V
Nominal operating voltage DC	24 V
Intrinsic current consumption at nominal operating voltage	Typ. 60 mA
Max. power supply	4 A
Certification	RCM compliance mark c UL us - Listed (OL)
KC characters	KC EMC
CE marking (see declaration of conformity)	As per EU EMC directive
Corrosion resistance class (CRC)	2 - Moderate corrosion stress
Storage temperature	-20 °C ... 70 °C
Degree of protection	IP65 IP67
Note on degree of protection	In mounted state Unused connections sealed
Ambient temperature	-5 °C ... 50 °C
Housing material	PA
Note on materials	Contains paint-wetting impairment substances RoHS-compliant