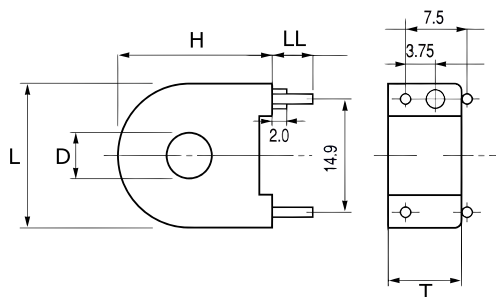


**KEMET Part Number: CT-07-100**  
(USEN0710000000)

KEMET, CT, Current, Round - Toroidal, AC, Overcurrent/Current Detection, High Sensitivity, High Performance



#### General Information

<b>Series:</b>	CT
<b>Type:</b>	Current
<b>Style:</b>	Round - Toroidal
<b>Description:</b>	Low Alternating Current Sensor
<b>Features:</b>	Overcurrent/Current Detection, High Sensitivity, High Performance
<b>Lead:</b>	4 Wire Leads
<b>RoHS:</b>	Yes
<b>Notes:</b>	0.8 mm Diameter Pin Connectors

#### Dimensions

<b>D</b>	5.9mm NOM
<b>L</b>	19mm NOM
<b>H</b>	20.2mm NOM
<b>T</b>	10mm MAX
<b>LL</b>	5.5mm +/-0.5mm

#### Specifications

<b>Temperature Range:</b>	-20/+80°C
<b>Miscellaneous:</b>	Materials = Phenolic Resin Case, Epoxy-Filled. 1000 turns.

#### Packaging Specifications

<b>Packaging:</b>	Tray
<b>Packaging Quantity:</b>	1200
<b>Weight:</b>	5.6 g