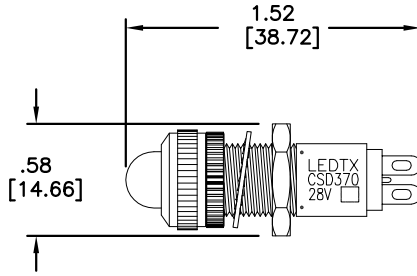
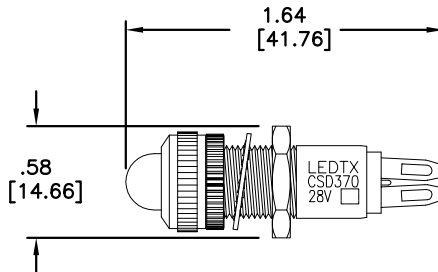


LTR	REVISION	DATE	APPD
-	RELEASED	03-13-19	



SIDE VIEW



ALTERNATE PART W/ LONGER TERMINALS



NOTES:

1. ALL DIMENSIONS ARE IN INCHES [MILLIMETERS].
2. MOUNTING DIAMETER: Ø3/8"
3. COLLAR MATERIAL: ALUMINUM, BLACK ANODIZED
4. NUT MATERIAL: ALUMINUM, BLACK ANODIZED
5. LOCKWASHER MATERIAL: #425 ALLOY BRONZE
6. NUT MATERIAL: 18-8 STAINLESS STEEL
7. SLEEVE MATERIAL: ALUMINUM, BLACK ANODIZED
8. HOLDER MATERIAL: INSULATOR - BLACK MOLDED PHENOLIC
TERMINAL: TIN PLATED BERYLLIUM COPPER

REVISION NOTIFICATION	
<input type="checkbox"/>	DLC
<input type="checkbox"/>	UL/ETL
<input type="checkbox"/>	MADE IN USA
<input type="checkbox"/>	CUSTOMER _____
<input type="checkbox"/>	OTHER
REDLINE CHECKLIST	
<input type="checkbox"/>	REDLINE(YES)
<input type="checkbox"/>	DATE: _____
<input type="checkbox"/>	INITIATED BY: _____
<input type="checkbox"/>	ECR REQUIRED YES <input type="checkbox"/> NO <input type="checkbox"/>
<input type="checkbox"/>	WORK ORDER# _____

ELECTRICAL-OPTICAL CHARACTERISTICS (Ta = 25°C)

CSD370-0AG-028V	SUPER AQUA GREEN	24/28Vdc	0.014 A	0.39 W	521	0.500 cd	16°
CSD370-0UR-028V	ULTRA RED	24/28Vdc	0.020 A	0.56 W	632	0.090 cd	30°
CSD370-0UY-028V	SUPER YELLOW	24/28Vdc	0.020 A	0.56 W	595	0.187 cd	25°
LEDTRONICS PART NO.	COLOR EMITTED	INPUT VOLTAGE, V (Tested@28Vdc)	CURRENT (A)	POWER (W)	λP nm	MAXIMUM CANDELA	VIEWING ANGLE (FULL BEAM WIDTH @ 50% INTENSITY)

<p>LEDTRONICS,™ INC. 23105 KASHIWA COURT TORRANCE, CA 90505</p>	<p>-PROPRIETARY- This document contains Proprietary Information of LEDTRONICS, INC. It may not be copied, used or disclosed for any purpose without the prior express written consent of LEDTRONICS, INC.</p>		<p>TITLE CSD370-0XX-028V</p>				
	<p>.XXX ± .010 TOLERANCE PER ANSI-Y14.5 .XX ± .025 (UNLESS OTHERWISE STATED) ANGLES ± 0°,30' FRACT. ± 1/32</p>		DWG NO	SCALE	SHEET	DATE	
			CSD370-28V-DC	1:1	1 OF 1	03-13-19	
		CODE IDENT NO.	DWG BY HF	CHK BY	QA SB	MFG LD	R&D UF
		8Z410	03-13-19		05-31-19	05-30-19	05-30-19