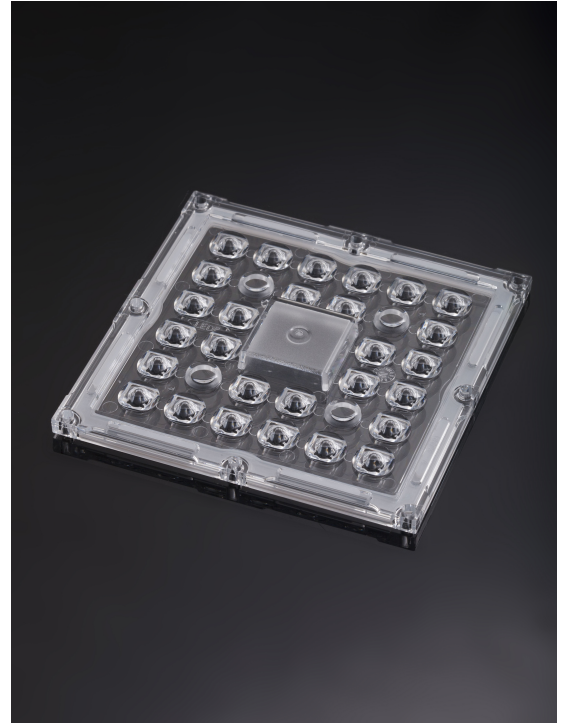


STRADELLA-IP-28-VSM

IESNA Type V (square) beam for wide areas lighting such as car parks. Variant made from PMMA.

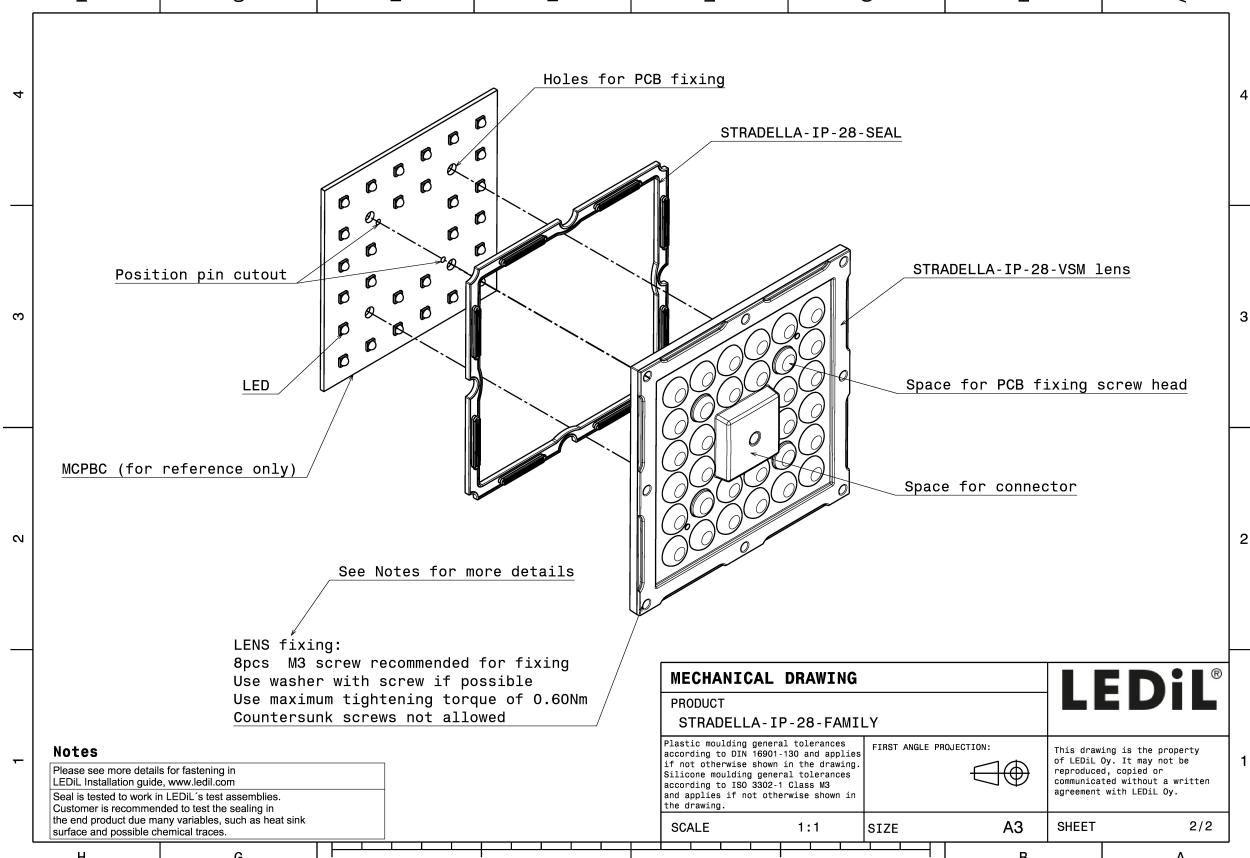
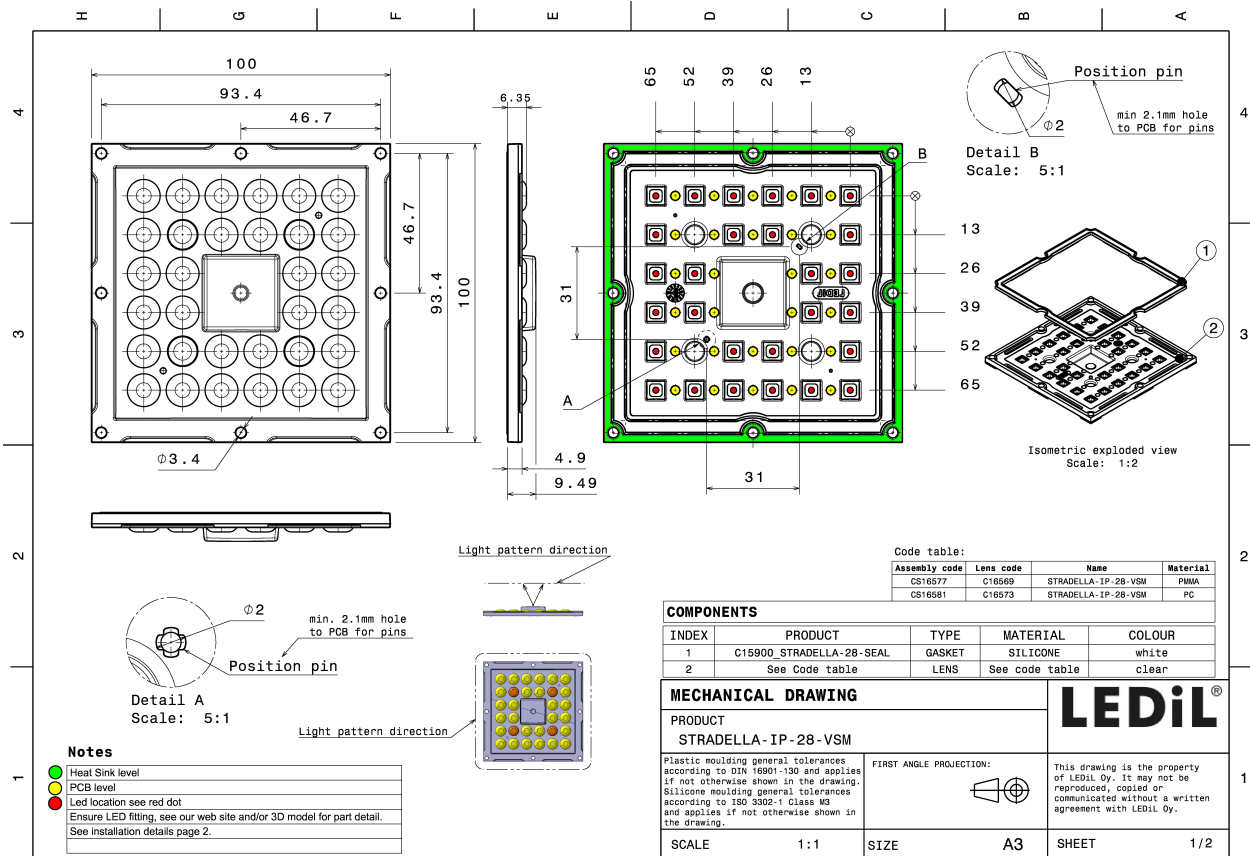
TECHNICAL SPECIFICATIONS:

| | |
|-----------------|--------------------|
| Dimensions | 100.0 mm |
| Height | 9.5 mm |
| Fastening | screw |
| Colour | clear |
| Box size | 476 x 273 x 247 mm |
| Box weight | 6 kg |
| Quantity in Box | 156 pcs |
| ROHS compliant | yes ⓘ |



MATERIAL SPECIFICATIONS:

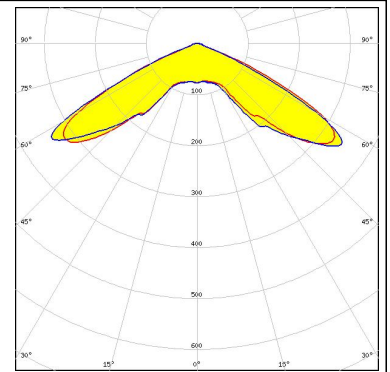
| Component | Type | Material | Colour |
|---------------------|------------|----------|--------|
| STRADELLA-IP-28-VSM | Multi-lens | PMMA | |
| STRADELLA-28-SEAL | Seal | Silicone | white |



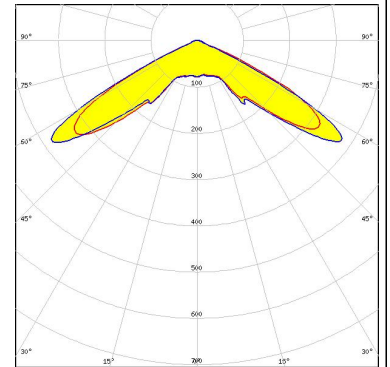
PHOTOMETRIC DATA (MEASURED):



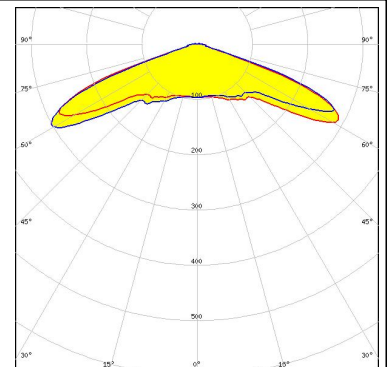
LED HiQLED STR28 CR JE2835 4x7 xxx
 FWHM 129.0°
 Efficiency 94 %
 Peak intensity 0.450 cd/lm
 LEDs/each optic 1
 Light colour White
 Required components:



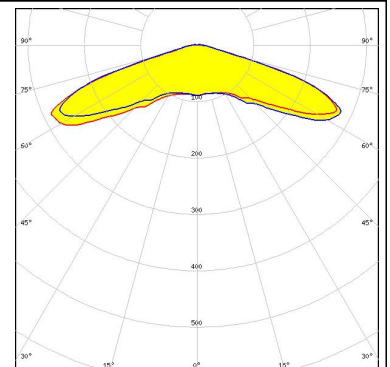
LED HiQLED STR28 CR JÐš3030 4x7 xxx
 FWHM 128.0°
 Efficiency 94 %
 Peak intensity 0.500 cd/lm
 LEDs/each optic 1
 Light colour White
 Required components:



LED QUICK FLUX STR28 XD2x14 xxx G8
 FWHM 141.0°
 Efficiency 94 %
 Peak intensity 0.450 cd/lm
 LEDs/each optic 1
 Light colour White
 Required components:



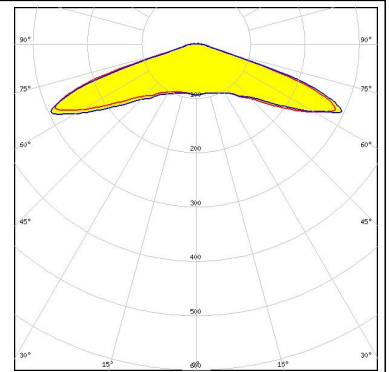
LED QUICK FLUX STR28 XP2x14 xxx G7
 FWHM 146.0°
 Efficiency 94 %
 Peak intensity 0.430 cd/lm
 LEDs/each optic 1
 Light colour White
 Required components:



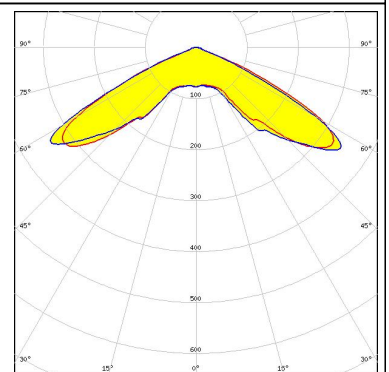
PHOTOMETRIC DATA (MEASURED):



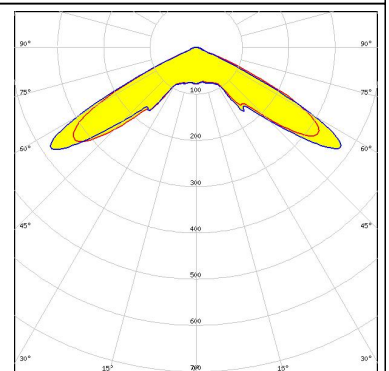
LED QUICK FLUX STR28 XT2x14 xxx G5
FWHM 146.0°
Efficiency 94 %
Peak intensity 0.400 cd/lm
LEDs/each optic 1
Light colour White
Required components:



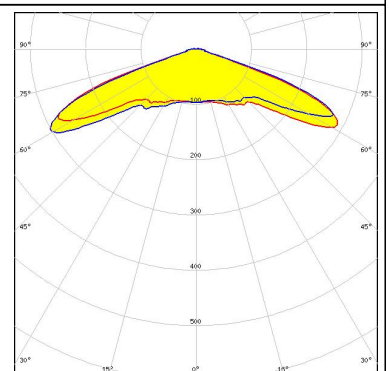
LED J Series 2835
FWHM 129.0°
Efficiency 94 %
Peak intensity 0.450 cd/lm
LEDs/each optic 1
Light colour White
Required components:



LED J Series 3030
FWHM 128.0°
Efficiency 94 %
Peak intensity 0.500 cd/lm
LEDs/each optic 1
Light colour White
Required components:



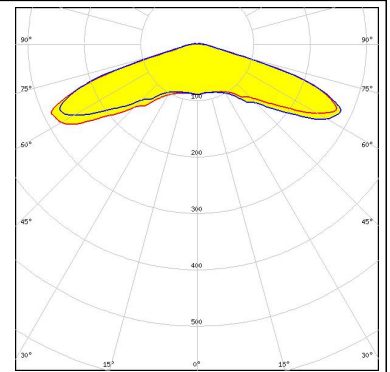
LED XD16
FWHM 141.0°
Efficiency 94 %
Peak intensity 0.450 cd/lm
LEDs/each optic 1
Light colour White
Required components:



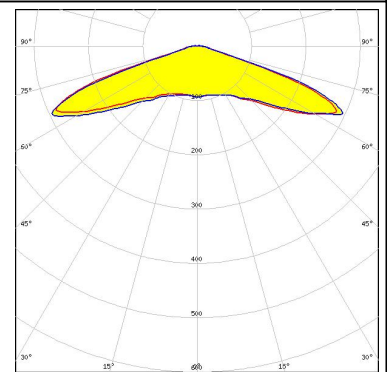
PHOTOMETRIC DATA (MEASURED):



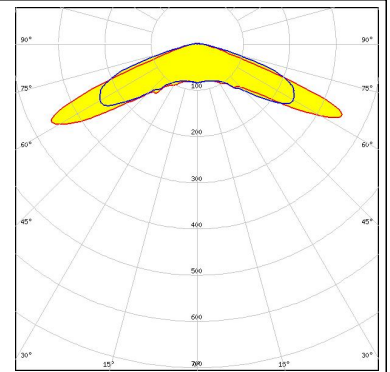
LED XP-G3
 FWHM 146.0°
 Efficiency 94 %
 Peak intensity 0.370 cd/lm
 LEDs/each optic 1
 Light colour White
 Required components:



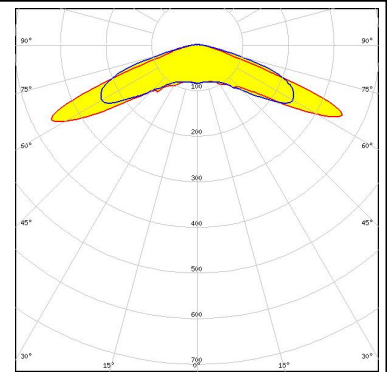
LED XT-E
 FWHM 146.0°
 Efficiency 94 %
 Peak intensity 0.400 cd/lm
 LEDs/each optic 1
 Light colour White
 Required components:



LED NF2W585AR
 FWHM Asymmetric
 Efficiency 94 %
 Peak intensity 0.391 cd/lm
 LEDs/each optic 1
 Light colour White
 Required components:



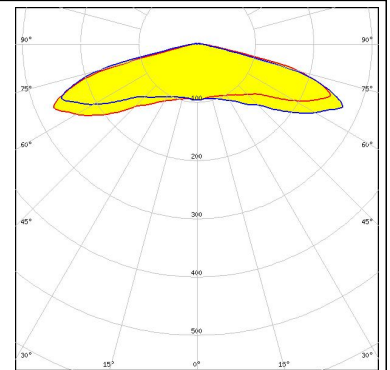
LED NF2W585AR
 FWHM Asymmetric
 Efficiency 94 %
 Peak intensity 0.392 cd/lm
 LEDs/each optic 1
 Light colour White
 Required components:



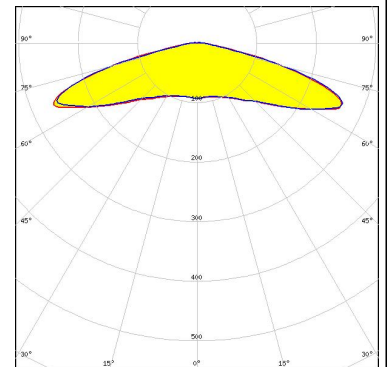
PHOTOMETRIC DATA (MEASURED):



LED NVSW219F
 FWHM 153.0°
 Efficiency 94 %
 Peak intensity 0.360 cd/lm
 LEDs/each optic 1
 Light colour White
 Required components:



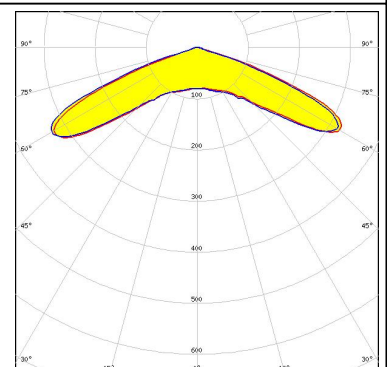
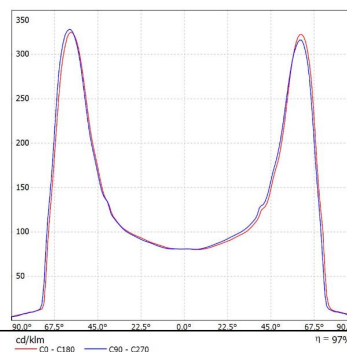
LED NVSW319B
 FWHM 154.0°
 Efficiency 94 %
 Peak intensity 0.340 cd/lm
 LEDs/each optic 1
 Light colour White
 Required components:



Opto Semiconductors

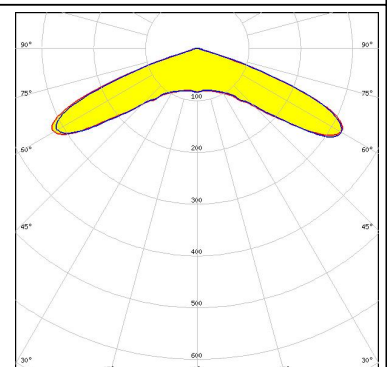
LED Duris S5 (Single chip)
 FWHM 138.0°
 Efficiency 94 %
 Peak intensity 0.440 cd/lm
 LEDs/each optic 1
 Light colour White
 Required components:

Luminaire: LEDiL Oy CS16577_STRADELLA-IP-28-VSM (Duris_S5)
 Lampo: 1 x Osram_Duris_S5_Stradella28 (00W_P50_R32_E14_A28-A333-1)
 782.419lm@250mA CCT=5000K P=4.88555V U=19.548V



Opto Semiconductors

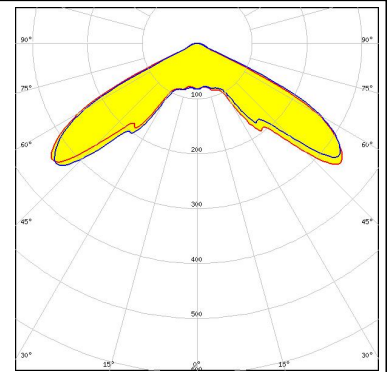
LED OSCONIQ S 3030
 FWHM Asymmetric
 Efficiency 94 %
 Peak intensity 0.425 cd/lm
 LEDs/each optic 1
 Light colour White
 Required components:



PHOTOMETRIC DATA (MEASURED):

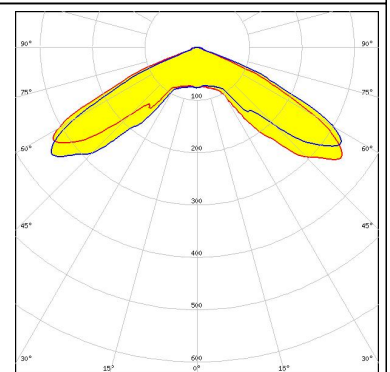
SAMSUNG

LED HiLOM SC28 (LH181B)
FWHM 125.0°
Efficiency 94 %
Peak intensity 0.430 cd/lm
LEDs/each optic 1
Light colour White
Required components:



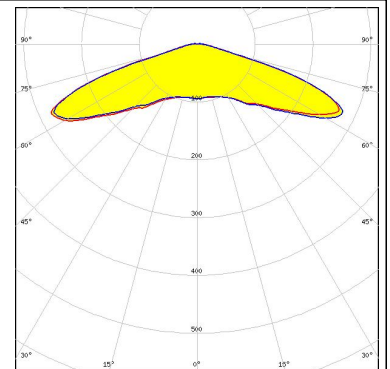
SAMSUNG

LED HiLOM SM28 (LM301B)
FWHM 129.0°
Efficiency 94 %
Peak intensity 0.460 cd/lm
LEDs/each optic 1
Light colour White
Required components:



SEOUL SEMICONDUCTOR

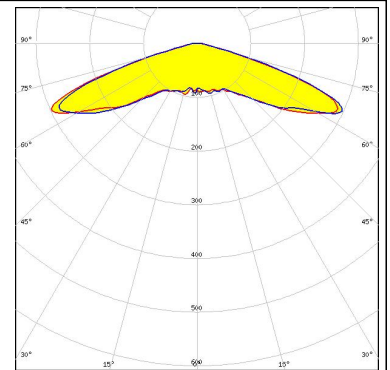
LED Z5M3
FWHM 147.0°
Efficiency 94 %
Peak intensity 0.400 cd/lm
LEDs/each optic 1
Light colour White
Required components:



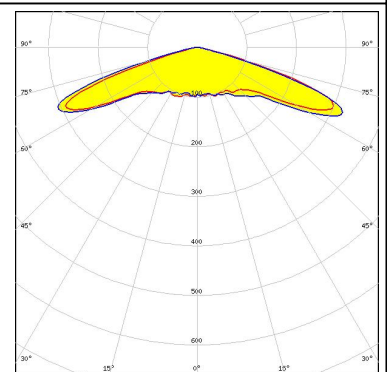
PHOTOMETRIC DATA (SIMULATED):



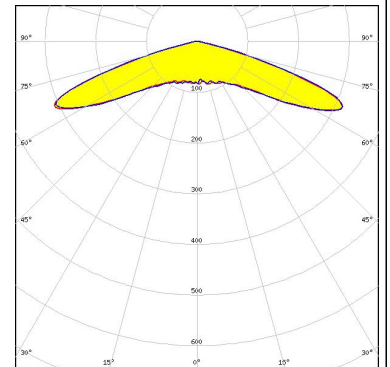
LED NF2x757G
FWHM 144.0°
Efficiency 93 %
Peak intensity 0.340 cd/lm
LEDs/each optic 1
Light colour White
Required components:



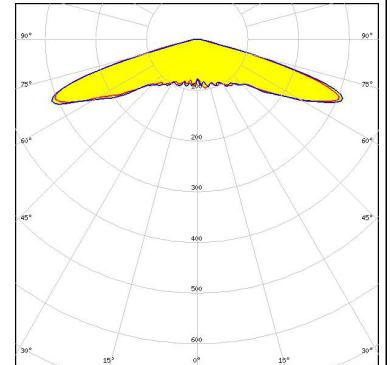
LED OSCONIQ P 3030
FWHM 146.0°
Efficiency 95 %
Peak intensity 0.460 cd/lm
LEDs/each optic 1
Light colour White
Required components:



LED SEOUL DC 3030C
FWHM 146.0°
Efficiency 95 %
Peak intensity 0.424 cd/lm
LEDs/each optic 1
Light colour White
Required components:



LED Z5M1/Z5M2
FWHM 147.0°
Efficiency 94 %
Peak intensity 0.400 cd/lm
LEDs/each optic 1
Light colour White
Required components:



PHOTOMETRIC DATA (SIMULATED):



GENERAL INFORMATION:

NOTE: The typical beam angle will be changed by different color, chip size and chip position tolerance. The typical total beam angle is the full angle measured where the luminous intensity is half of the peak value.

MATERIALS:

As part of our continuous research and improvement processes, and to ensure the best possible quality and availability of our products, LEDiL reserves the right to change material grades without notice.

PRODUCT DATA USER AGREEMENT AND DISCLAIMER:

The measured data in the provided downloadable LEDiL Product Datasheets and Mechanical 2D-Drawings is rounded and provided as reference for planning. LEDiL Oy's optical specifications have been verified by conducting performance testing of the products in accordance with the company's quality system. The reported data are averaged results of multiple measurements with typical variation. LEDiL Oy reserves the right to without prior notification make changes and improvements to its products.

LEDiL Oy assumes neither warranty, nor guarantee nor any other liability of any kind for the contents and correctness of the provided data. The provided data has been generated with highest diligence but the provided data may in reality not represent the complete possible variation range of all intrinsic parameters. Therefore, in certain cases a deviation from the provided data could occur.

LEDiL Oy reserves the right to undertake technical changes of its products without further notification which could lead to changes in the provided data. LEDiL Oy assumes no liability of any kind for the possible deviation from any provided data or any other damage resulting from the usage of the provided data.

The user agrees to this disclaimer and user agreement with the download or usage of the provided files.

LEDiL Oy

Joensuunkatu 13
FI-24240 SALO
Finland

LEDiL Inc.

228 West Page Street
Suite D
Sycamore IL 60178
USA

Local sales and technical support

[www.ledil.com/
where_to_buy](http://www.ledil.com/where_to_buy)

Shipping locations

Salo, Finland
Hong Kong, China

Distribution Partners

[www.ledil.com/
where_to_buy](http://www.ledil.com/where_to_buy)