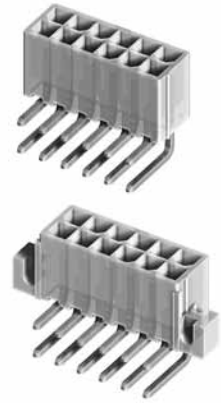


CP-014 Series 4.20mm(.165")Right Angle DIP Solder Headers

- ⊙ Option with mounting ears
- ⊙ Mates with CP-011 connector
- ⊙ Nylon 66 UL 94V-0 or V-2 insulator material



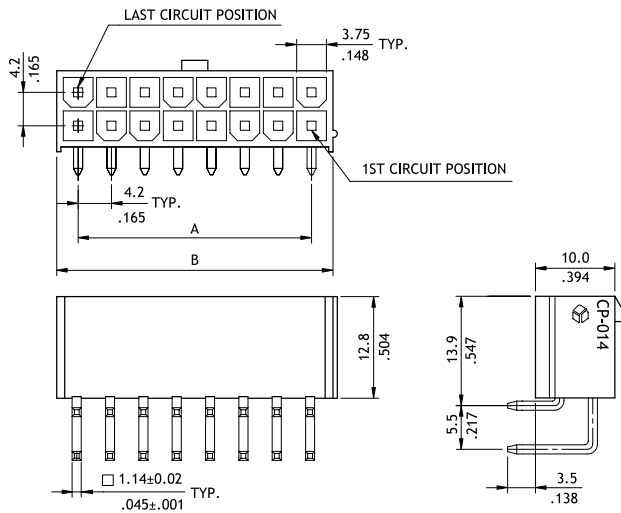
CP

Ordering code

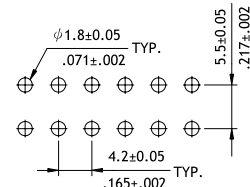
①	②	③	④	⑤	⑥
C P - 0 1	4	2 4	1	0	0

① Series No.
② Connector Type:
 4 = Right angle header
③ No of Circuits:
 See below table
④ Plating code:
 1 = Tin over Nickel
⑤ Variation:
 0 = UL 94V-2, with mounting ears
 1 = UL 94V-2, without mounting ear
 2 = UL 94V-0, with mounting ears
 3 = UL 94V-0, without mounting ear
⑥ Other Options:
 0 = Standard
 Special options consult manufacturer

P/N CP-014**110 / CP-014**130

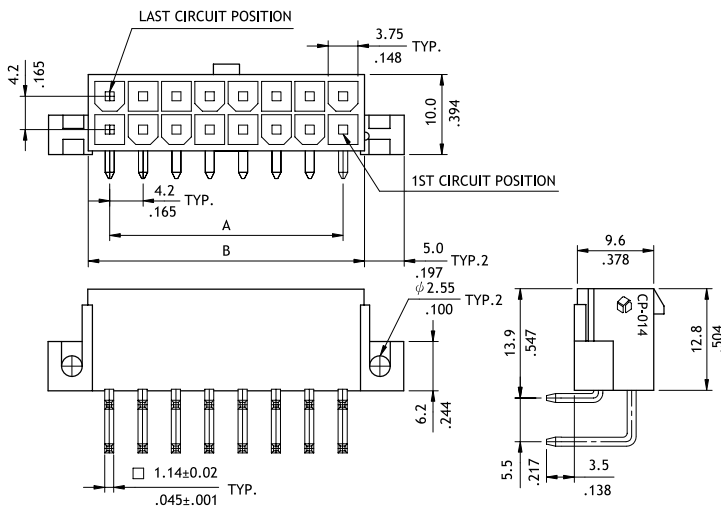


Circuits	Dimension	
	A	B
2	-	6.0(.236)
4	4.2(.165)	10.2(.402)
6	8.4(.331)	14.4(.567)
8	12.6(.496)	18.6(.732)
10	16.8(.661)	22.8(.898)
12	21.0(.827)	27.0(1.063)
14	25.2(.992)	31.2(1.228)
16	29.4(1.157)	35.4(1.394)
18	33.6(1.322)	39.6(1.559)
20	37.8(1.487)	43.8(1.724)
22	42.0(1.652)	48.0(1.890)
24	46.2(1.817)	52.2(2.055)

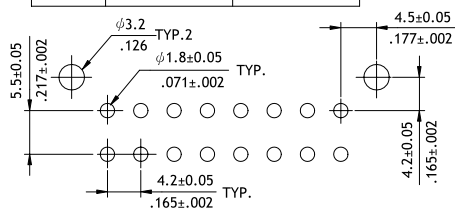


Recommended P.C. Board Layout

P/N CP-014**100 / CP-014**120



Circuits	Dimension	
	A	B
2	-	6.0(.236)
4	4.2(.165)	10.2(.402)
6	8.4(.331)	14.4(.567)
8	12.6(.496)	18.6(.732)
10	16.8(.661)	22.8(.898)
12	21.0(.827)	27.0(1.063)
14	25.2(.992)	31.2(1.228)
16	29.4(1.157)	35.4(1.394)
18	33.6(1.322)	39.6(1.559)
20	37.8(1.487)	43.8(1.724)
22	42.0(1.652)	48.0(1.890)
24	46.2(1.817)	52.2(2.055)



Recommended P.C. Board Layout

WIRE TO BOARD