



# CHB75 SERIES

## 75 WATT WIDE INPUT DC-DC CONVERTERS

### DUAL OUTPUT



## FEATURES

- \* 75W Isolated Output
- \* Efficiency to 84%
- \* 400KHz Switching Frequency
- \* 2:1 Input Range
- \* Regulated Outputs
- \* Continuous Short Circuit Protection
- \* Half-Brick Size Meet Industrial Standard
- \* Total Power 75W with 15A Maximum Per Channel
- \* UL60950-1 Approval



MODEL NUMBER	INPUT VOLTAGE	OUTPUT VOLTAGE	OUTPUT CURRENT		INPUT CURRENT		% EFF.	CAPACITOR LOAD MAX.
			MIN.	MAX.	NO LOAD	FULL LOAD		
CHB75-24D05-3V3	18-36 VDC	VO1= 5V VO2=3.3V	0 A 0 A	15 A 15 A	50 mA	3765 mA	83% <sup>(2)</sup>	15000uF
CHB75-24D05-2V5	18-36 VDC	VO1= 5V VO2=2.5V	0 A 0 A	15 A 15 A	50 mA	3765 mA	83% <sup>(2)</sup>	15000uF
CHB75-48D05-3V3	36-75 VDC	VO1= 5V VO2=3.3V	0 A 0 A	15 A 15 A	30 mA	1860 mA	84% <sup>(2)</sup>	15000uF
CHB75-48D05-2V5	36-75 VDC	VO1= 5V VO2=2.5V	0 A 0 A	15 A 15 A	30 mA	1860 mA	84% <sup>(2)</sup>	15000uF

NOTE: 1. Nominal Input Voltage 24, 48VDC  
2. Measured with 15A Load on Vo1

# SPECIFICATIONS

All Specifications Typical At Nominal Line, Full Load and 25°C Unless Otherwise Noted

## INPUT SPECIFICATIONS:

Input Voltage Range	24V	18-36V
	48V	36-75V
Input Surge Voltage (100ms max.)	24V	50Vdc max.
	48V	100Vdc max.
Under Voltage Lockout	24Vin power up	17V
	24Vin power down	15.5V
	48Vin power up	34V
	48Vin power down	32.5V

Positive Logic Remote On/Off (note4&5)

Input Filter ..... Pi Type

## OUTPUT SPECIFICATIONS:

Voltage Accuracy	±2% max.
Transient Response: 25% Step Load Change	<500µs
External Trim Adj. Range, Each Output	±5%
Ripple & Noise, 20MHz BW (note6)	40mV RMS max.
	100mV pk-pk max.

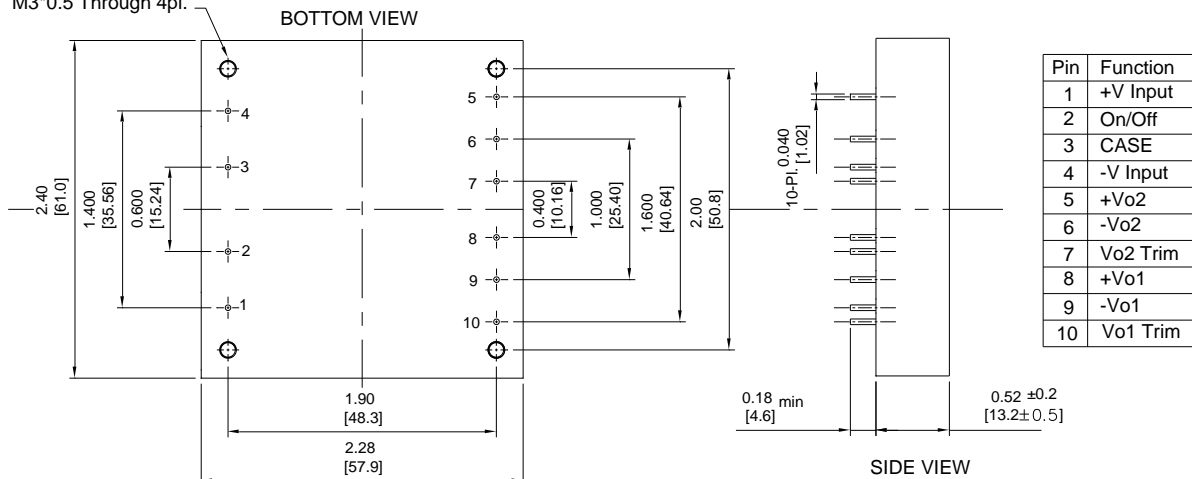
Temperature Coefficient	±0.03%/°C max.
Short Circuit Protection	Continuous
Line Regulation (note1)	±0.2% max.
Load Regulation (note2)	±0.5% max.
Over Voltage Protection Trip Range, % Vo nom.	115-140%
Current Limit (note3)	110%-140% Nominal Output
Start up Time	20ms typ.

CASE HB

All Dimensions In Inches (mm)

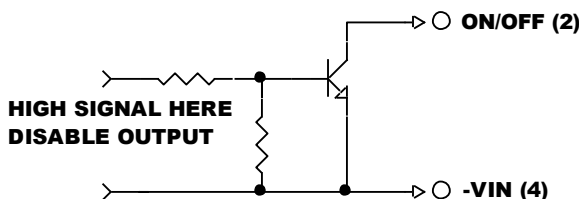
Tolerances Inches: X.XX= ±0.02 , X.XXX= ±0.010  
 Millimeters: X.X= ±0.5 , X.XX=±0.25

Mounting Inserts  
 M3\*0.5 Through 4pl.



Pin	Function
1	+V Input
2	On/Off
3	CASE
4	-V Input
5	+Vo2
6	-Vo2
7	Vo2 Trim
8	+Vo1
9	-Vo1
10	Vo1 Trim

## REMOTE ON/OFF CONTROL



## EXTERNAL OUTPUT TRIM

