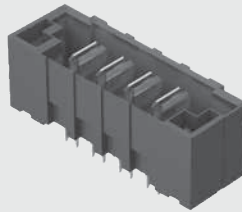
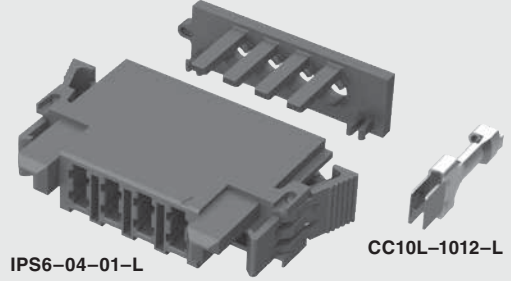


**POWER STRIP 40**



PET-04-01-L-VT



IPS6-04-01-L

CC10L-1012-L

(6.35 mm) .250"

**IPS6, CC10, PET SERIES**

# DISCRETE WIRE COMPONENTS & TOOLING

**SPECIFICATIONS**

For complete specifications see [www.samtec.com?IPS6](http://www.samtec.com?IPS6) or [www.samtec.com?CC10](http://www.samtec.com?CC10)

**TOOLING**

- Hand Tool: CAT-HT-310-1012-14
- Mini Applicator: CAT-MC-310-1012-XX-02

**IPS6** - **POSITIONS PER ROW** - **01** - **LATCH** - **TYPE** - **WIRE GAUGE** - **PLATING OPTION**

**-02, -04, -06, -08**

**-L** = Latch

**CC10R** = Contact, Full Reel  
**CC10L** = Contact, Loose

**-1012** = 10 to 12 AWG

**-L** = 10 μ" (0.25 μm) Gold on contact, Matte Tin on tail  
**-T** = Matte Tin

**RUGGEDIZED BY SAMTEC**

- Screw down (right-angle)

Mates with: PES, PE55

**SPECIFICATIONS**

For complete specifications see [www.samtec.com?PET](http://www.samtec.com?PET)

**Insulator Material:** Black LCP  
**Terminal Material:** Copper Alloy  
**Plating:** Sn or Au over 50 μ" (1.27 μm) Ni  
**Operating Temp Range:** -55 °C to +105 °C with Tin  
-55 °C to +125 °C with Gold  
**Voltage Rating:** 725 VAC/1025 VDC  
**RoHS Compliant:** Yes  
**Lead-Free Solderable:** Yes

**RECOGNITIONS**

For complete scope of recognitions see [www.samtec.com/quality](http://www.samtec.com/quality)



**Note:** Some sizes, styles and options are non-standard, non-returnable.

**PET** - **NO. PINS PER ROW** - **LEAD STYLE** - **PLATING OPTION** - **TAIL OPTION** - **OTHER OPTION**

**-02, -04, -06, -08**

**-01** = Use with (1.60 mm) .062" Thick PCB  
**-02** = Use with (3.18 mm) .125" Thick PCB

**-L** = 10 μ" (0.25 μm) Gold on contact, Matte Tin on tail  
**-T** = Matte Tin

**-VT** = Vertical  
**-RA** = Right-angle (Screw Down option required)

**-SD** = Screw Down (Right-angle only)

**ALSO AVAILABLE (MOQ Required)**

- Locking Clip (Manual placement required)
- No Latch ears
- Other platings

LEAD STYLE	A
-01	(2.35) .093
-02	(3.95) .156

**-VT**      **-RA-SD**

Due to technical progress, all designs, specifications and components are subject to change without notice.

[WWW.SAMTEC.COM](http://WWW.SAMTEC.COM)

All parts within this catalog are built to Samtec's specifications. Customer specific requirements must be approved by Samtec and identified in a Samtec customer-specific drawing to apply.