


## GABRIELLA-MIDI-S

~10° spot beam with holder and installation tape

### TECHNICAL SPECIFICATIONS:

Dimensions	Ø 37.8 mm
Height	24.1 mm
Fastening	tape, pin
ROHS compliant	yes 

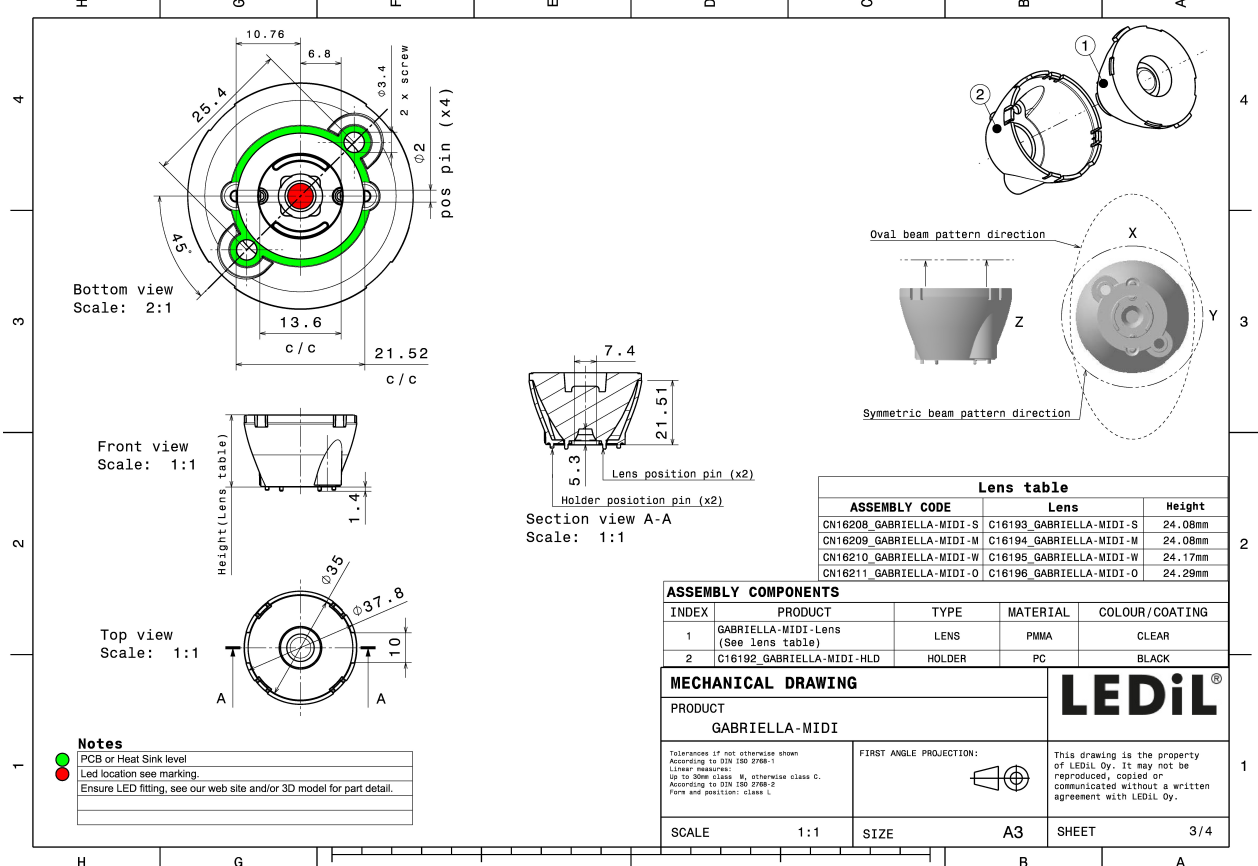
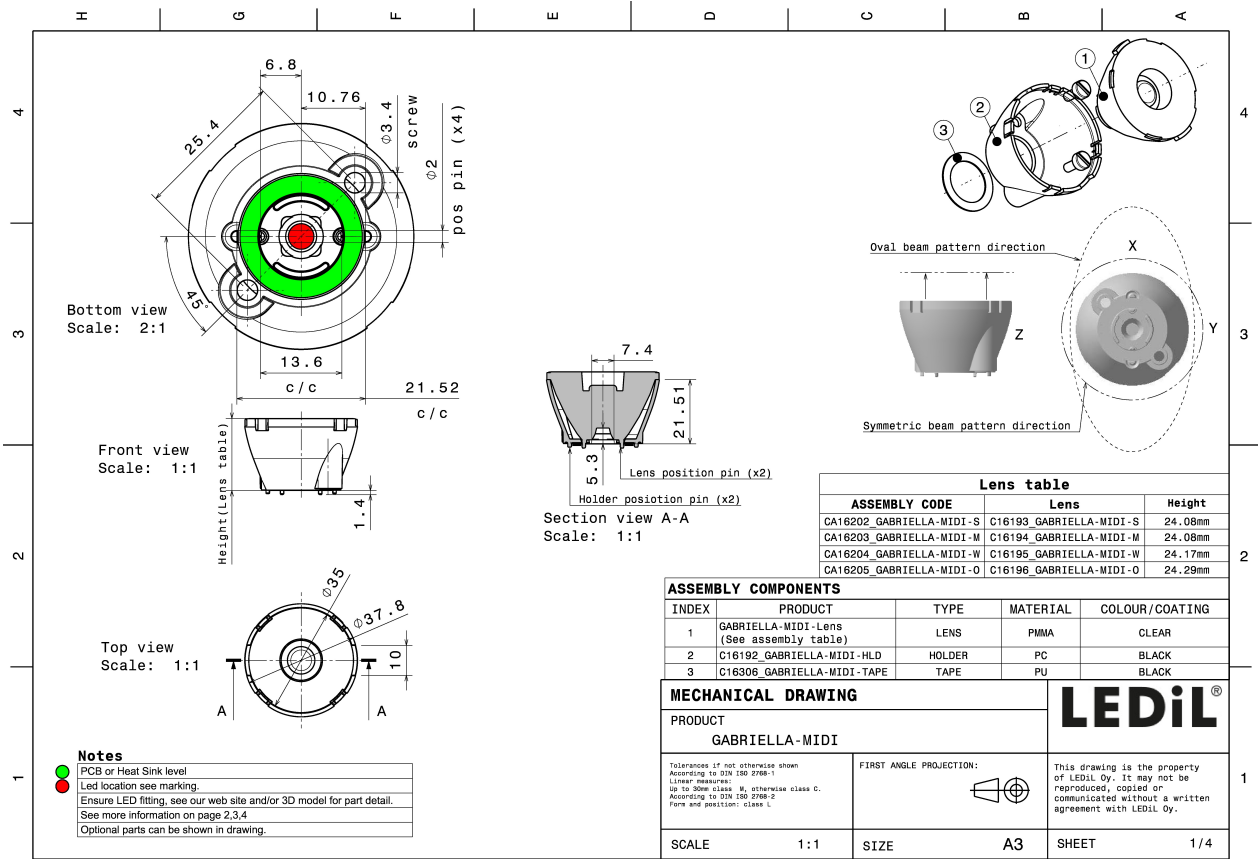
### MATERIAL SPECIFICATIONS:

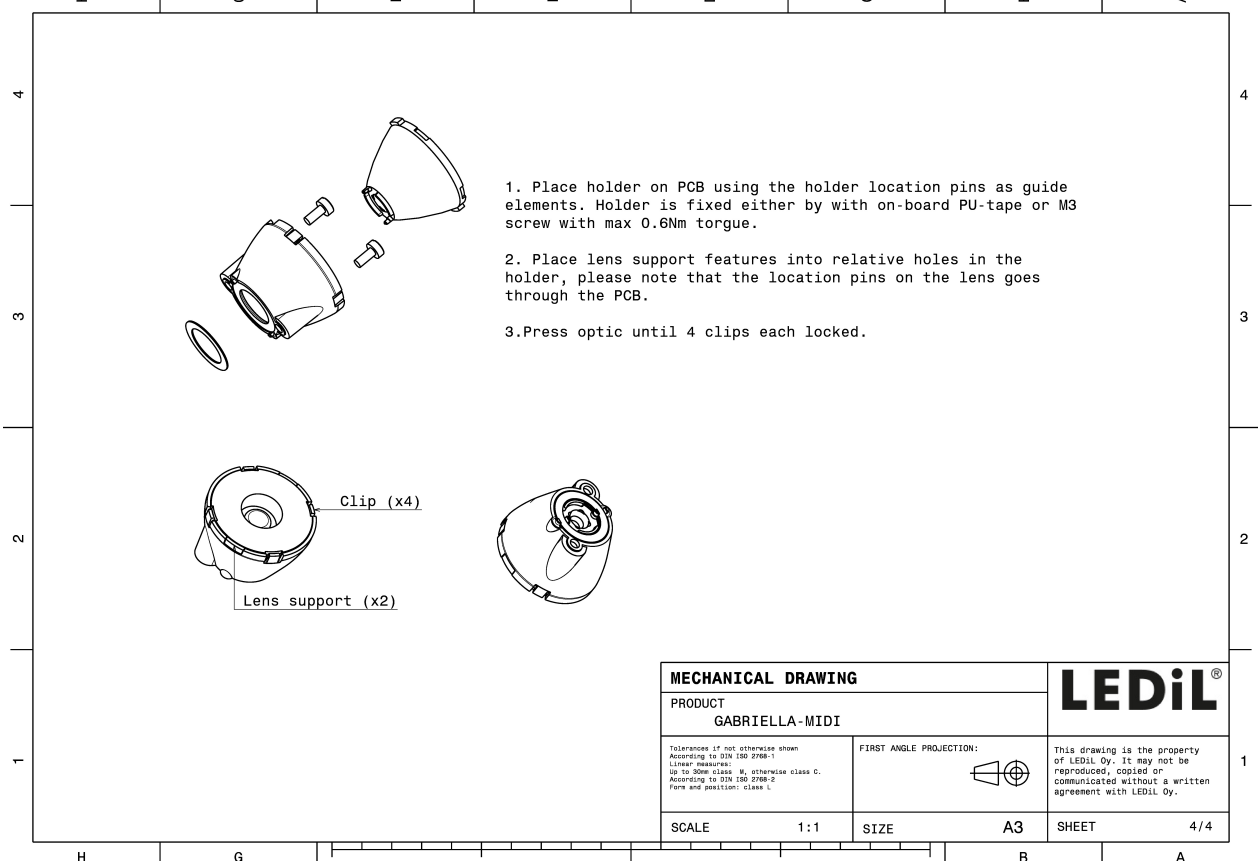
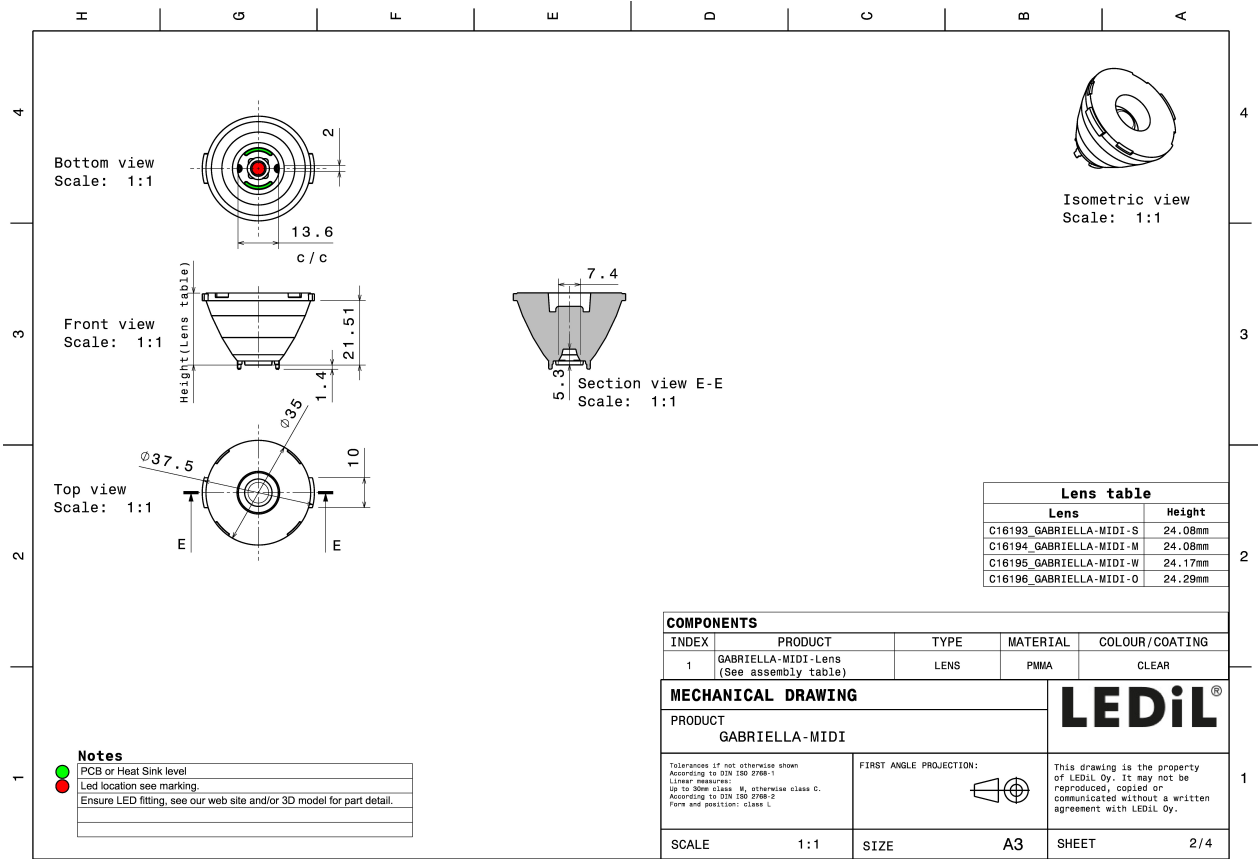
Component	Type	Material	Colour	Finish
GABRIELLA-MIDI-S	Single lens	PMMA		
GABRIELLA-MIDI-HLD	Holder	PC		
GABRIELLA-MIDI-TAPE	Tape	PU tape		



### ORDERING INFORMATION:

Component		Qty in box	MOQ	MPQ	Box weight (kg)
CA16202_GABRIELLA-MIDI-S	Single lens	500	100	50	11.7
» Box size: 476 x 273 x 292 mm					

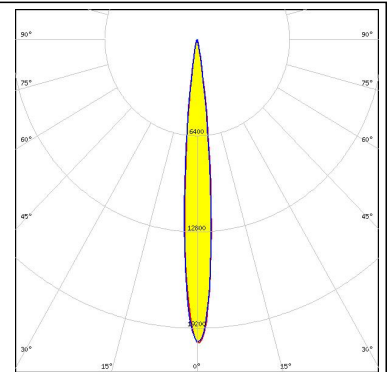
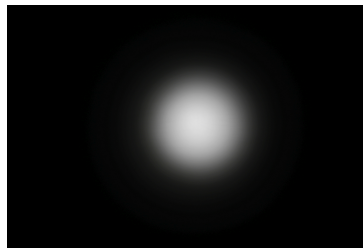




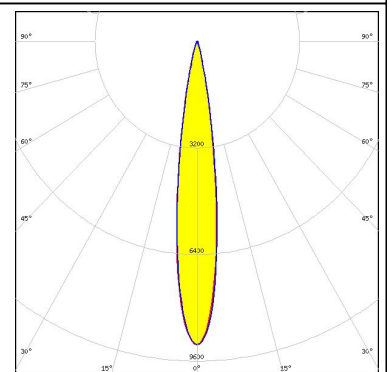
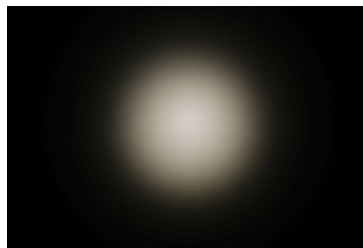
#### PHOTOMETRIC DATA (MEASURED):



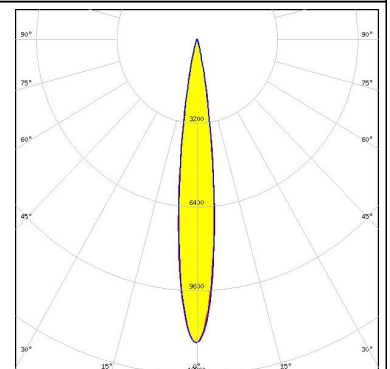
LED XHP35 HI  
 FWHM 10.0°  
 Efficiency 90 %  
 Peak intensity 20.350 cd/lm  
 LEDs/each optic 1  
 Light colour White  
 Required components:



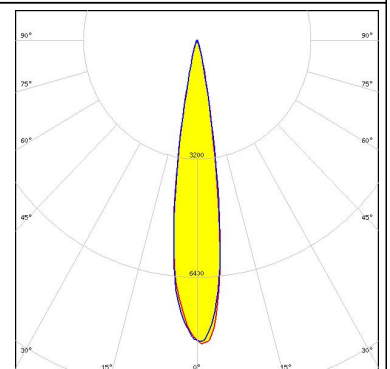
LED XHP50.2  
 FWHM 15.0°  
 Efficiency 87 %  
 Peak intensity 9.120 cd/lm  
 LEDs/each optic 1  
 Light colour White  
 Required components:



LED LUXEON 5050 Round LES  
 FWHM 14.0°  
 Efficiency 91 %  
 Peak intensity 12.600 cd/lm  
 LEDs/each optic 1  
 Light colour White  
 Required components:



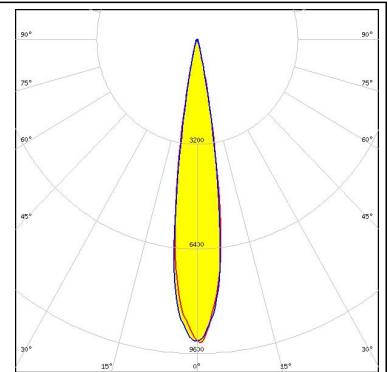
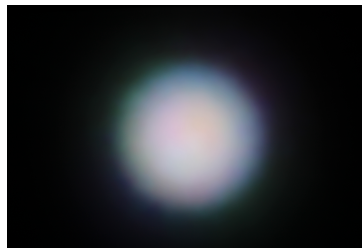
LED LUXEON C  
 FWHM 17.0°  
 Efficiency 85 %  
 Peak intensity 8.200 cd/lm  
 LEDs/each optic 1  
 Light colour RGBW  
 Required components:



#### PHOTOMETRIC DATA (MEASURED):

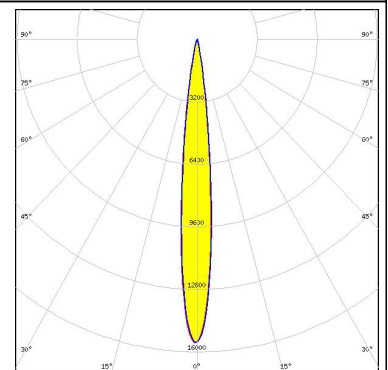
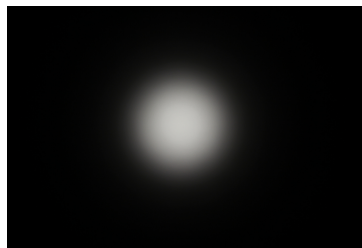
##### LUMILEDS

LED LUXEON CZ  
 FWHM 16.0°  
 Efficiency 89 %  
 Peak intensity 9.300 cd/lm  
 LEDs/each optic 4  
 Light colour RGBW  
 Required components:



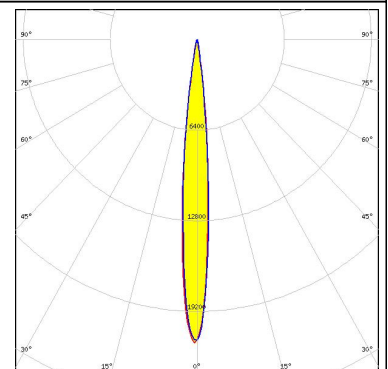
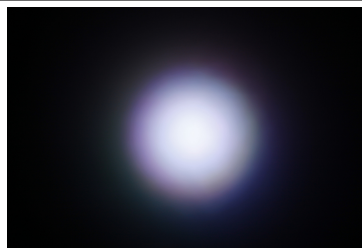
##### LUMILEDS

LED LUXEON V  
 FWHM 11.0°  
 Efficiency 89 %  
 Peak intensity 15.500 cd/lm  
 LEDs/each optic 1  
 Light colour White  
 Required components:



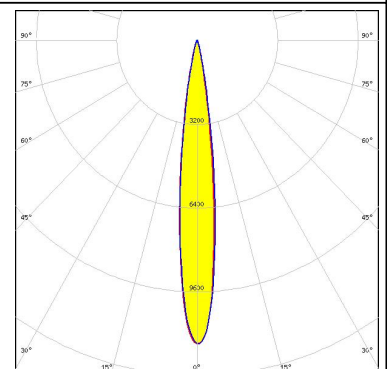
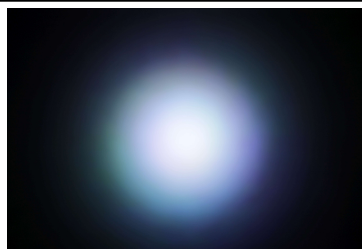
##### LUMINUS

LED SBM-40-RGBW  
 FWHM 10.0°  
 Efficiency 89 %  
 Peak intensity 21.500 cd/lm  
 LEDs/each optic 1  
 Light colour White  
 Required components:

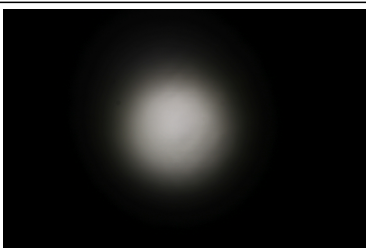
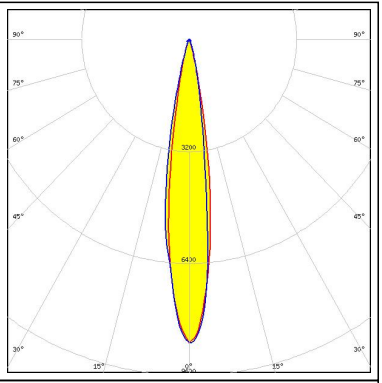

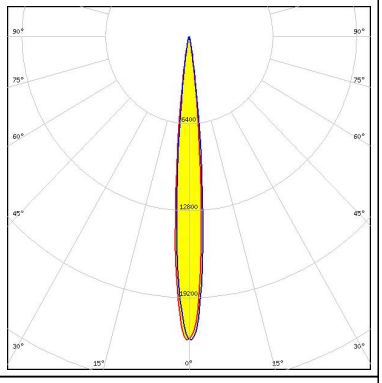
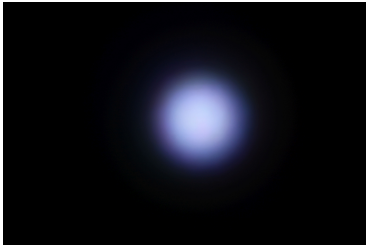
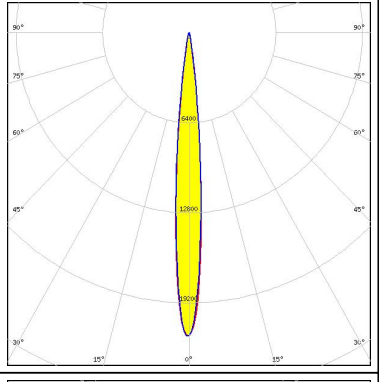

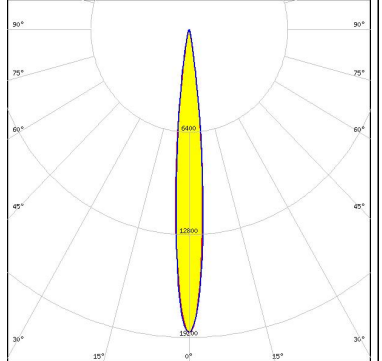


##### NICHIA

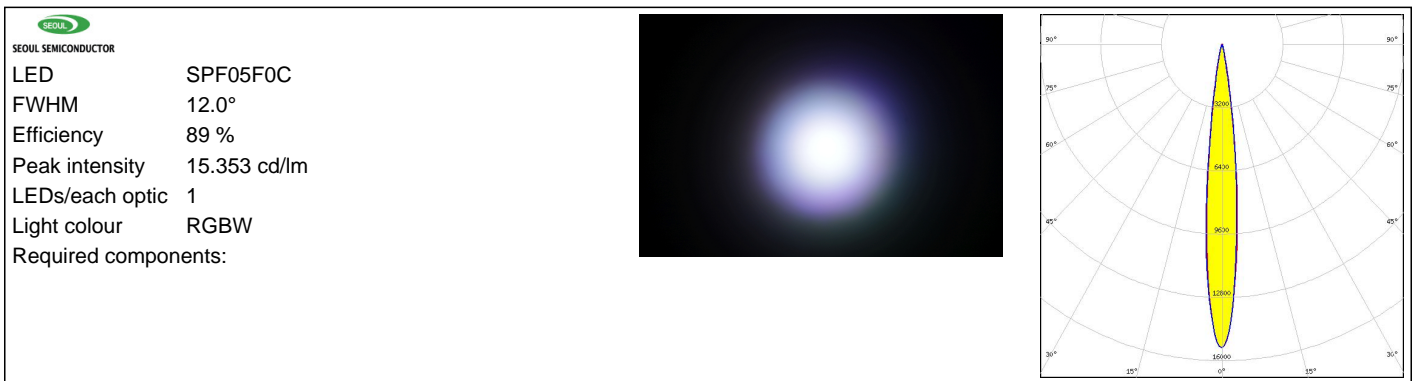
LED NCSxE17A  
 FWHM 13.0°  
 Efficiency 92 %  
 Peak intensity 11.600 cd/lm  
 LEDs/each optic 4  
 Light colour RGBW  
 Required components:



#### PHOTOMETRIC DATA (MEASURED):

<p><b>NICHIA</b></p> <p>LED NVSW219F            FWHM 16.0°            Efficiency 89 %            Peak intensity 8.700 cd/lm            LEDs/each optic 1            Light colour White            Required components:</p>		
<p><b>OSRAM</b>  <small>Opto Semiconductors</small></p> <p>LED OSTAR Stage (S2WP)            FWHM 10.0°            Efficiency 91 %            Peak intensity 22.000 cd/lm            LEDs/each optic 1            Light colour White            Required components:</p>		
<p><b>SEOL</b>  <small>SEOUL SEMICONDUCTOR</small></p> <p>LED SPF05F0A            FWHM 10.0°            Efficiency 89 %            Peak intensity 21.596 cd/lm            LEDs/each optic 1            Light colour RGBW            Required components:</p>		
<p><b>SEOL</b>  <small>SEOUL SEMICONDUCTOR</small></p> <p>LED SPF05F0B            FWHM 11.0°            Efficiency 90 %            Peak intensity 18.922 cd/lm            LEDs/each optic 1            Light colour RGBW            Required components:</p>		

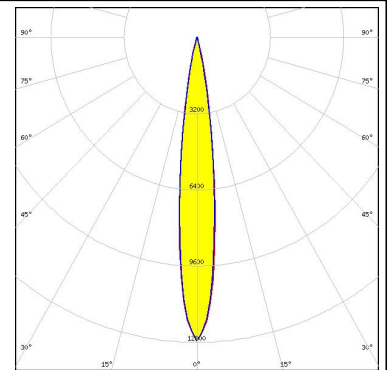
### PHOTOMETRIC DATA (MEASURED):



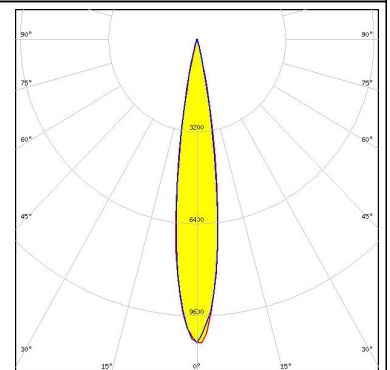
#### PHOTOMETRIC DATA (SIMULATED):



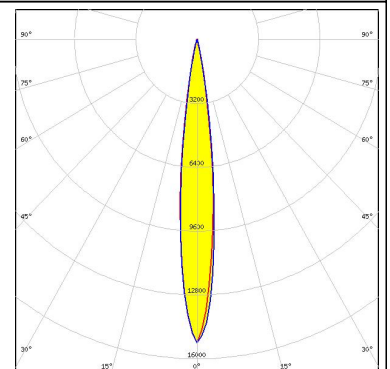
LED CLQ6A-TKW  
 FWHM 13.7°  
 Efficiency 94 %  
 Peak intensity 12.740 cd/lm  
 LEDs/each optic 1  
 Light colour RGBW  
 Required components:



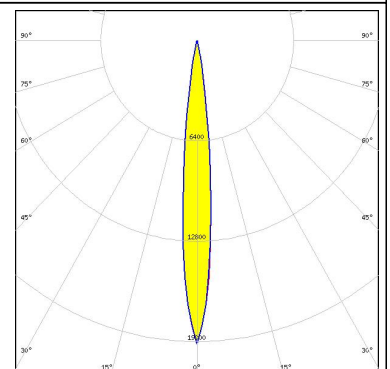
LED XHP50  
 FWHM 16.0°  
 Efficiency 91 %  
 Peak intensity 10.749 cd/lm  
 LEDs/each optic 1  
 Light colour White  
 Required components:



LED XM-L RGB  
 FWHM 13.0°  
 Efficiency 93 %  
 Peak intensity 15.200 cd/lm  
 LEDs/each optic 1  
 Light colour White  
 Required components:



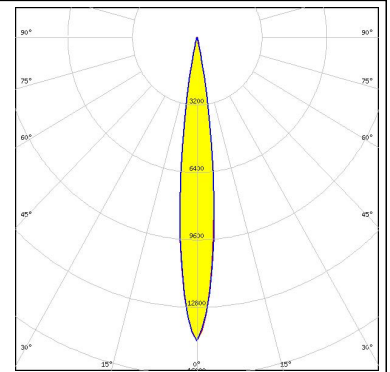
LED XP-G2 HE  
 FWHM 11.0°  
 Efficiency 92 %  
 Peak intensity 19.352 cd/lm  
 LEDs/each optic 1  
 Light colour White  
 Required components:



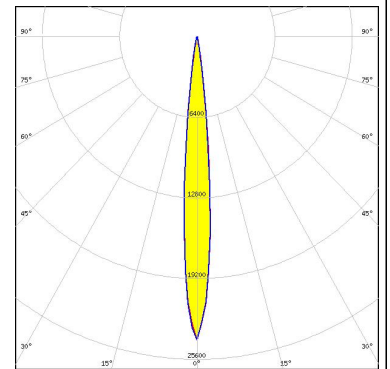
#### PHOTOMETRIC DATA (SIMULATED):



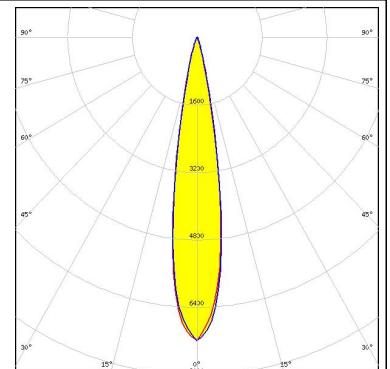
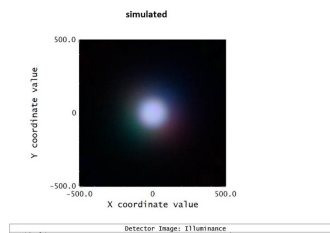
**LED** XQ-E HI  
**FWHM** 14.0°  
**Efficiency** 90 %  
**Peak intensity** 14.390 cd/lm  
**LEDs/each optic** 4  
**Light colour** RGBW  
**Required components:**



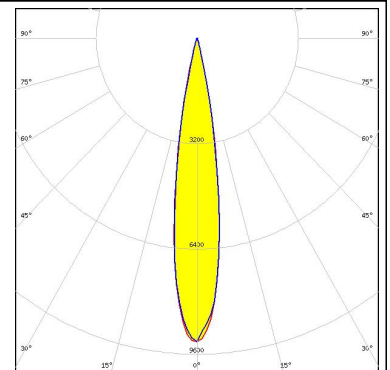
**LED** XT-E  
**FWHM** 10.0°  
**Efficiency** 91 %  
**Peak intensity** 24.060 cd/lm  
**LEDs/each optic** 1  
**Light colour** White  
**Required components:**



**LED** LUXEON C  
**FWHM** 18.0 + °  
**Efficiency** 86 %  
**Peak intensity** 7.200 cd/lm  
**LEDs/each optic** 4  
**Light colour** RGBW  
**Required components:**



**LED** LUXEON M/MX  
**FWHM** 17.0°  
**Efficiency** 91 %  
**Peak intensity** 9.270 cd/lm  
**LEDs/each optic** 1  
**Light colour** White  
**Required components:**



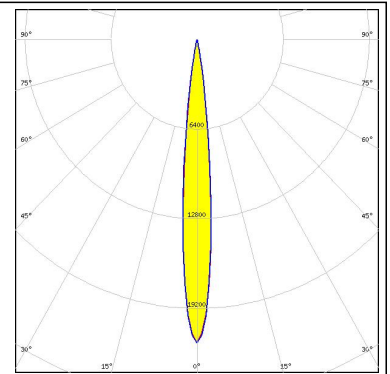
#### PHOTOMETRIC DATA (SIMULATED):

<p><b>LUMILEDS</b></p> <p>LED LUXEON Z            FWHM 11.0°            Efficiency 91 %            Peak intensity 21.000 cd/lm            LEDs/each optic 4            Light colour RGBW            Required components:</p>	
<p><b>OSRAM</b>  <small>Opto Semiconductors</small></p> <p>LED Duris S8            FWHM 14.0°            Efficiency 92 %            Peak intensity 13.500 cd/lm            LEDs/each optic 1            Light colour White            Required components:</p>	
<p><b>OSRAM</b>  <small>Opto Semiconductors</small></p> <p>LED OSCONIQ P 3737 (2W version)            FWHM 10.0°            Efficiency 94 %            Peak intensity 25.690 cd/lm            LEDs/each optic 1            Light colour White            Required components:</p>	
<p><b>OSRAM</b>  <small>Opto Semiconductors</small></p> <p>LED OSLOM Square CSSRM2/CSSRM3            FWHM 10.0°            Efficiency 93 %            Peak intensity 25.260 cd/lm            LEDs/each optic 1            Light colour White            Required components:</p>	

#### PHOTOMETRIC DATA (SIMULATED):

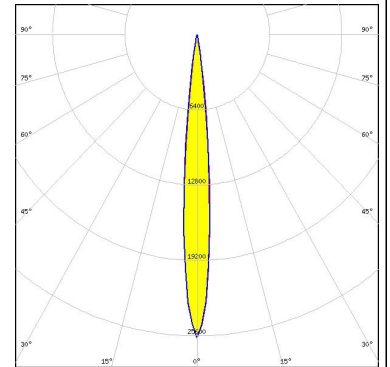
#### SAMSUNG

LED LH351B  
FWHM 11.0°  
Efficiency 93 %  
Peak intensity 21.670 cd/lm  
LEDs/each optic 1  
Light colour White  
Required components:



SEOUL SEMICONDUCTOR

LED Z5M1/Z5M2  
FWHM 10.0°  
Efficiency 93 %  
Peak intensity 25.780 cd/lm  
LEDs/each optic 1  
Light colour White  
Required components:



#### GENERAL INFORMATION:

NOTE: The typical beam angle will be changed by different color, chip size and chip position tolerance. The typical total beam angle is the full angle measured where the luminous intensity is half of the peak value.

#### MATERIALS:

As part of our continuous research and improvement processes, and to ensure the best possible quality and availability of our products, LEDiL reserves the right to change material grades without notice.

#### PRODUCT DATA USER AGREEMENT AND DISCLAIMER:

The measured data in the provided downloadable LEDiL Product Datasheets and Mechanical 2D-Drawings is rounded and provided as reference for planning. LEDiL Oy's optical specifications have been verified by conducting performance testing of the products in accordance with the company's quality system. The reported data are averaged results of multiple measurements with typical variation. LEDiL Oy reserves the right to without prior notification make changes and improvements to its products.

LEDiL Oy assumes neither warranty, nor guarantee nor any other liability of any kind for the contents and correctness of the provided data. The provided data has been generated with highest diligence but the provided data may in reality not represent the complete possible variation range of all intrinsic parameters. Therefore, in certain cases a deviation from the provided data could occur.

LEDiL Oy reserves the right to undertake technical changes of its products without further notification which could lead to changes in the provided data. LEDiL Oy assumes no liability of any kind for the possible deviation from any provided data or any other damage resulting from the usage of the provided data.

The user agrees to this disclaimer and user agreement with the download or usage of the provided files.

#### LEDiL Oy

Joensuunkatu 13  
FI-24240 SALO  
Finland

#### LEDiL Inc.

228 West Page Street  
Suite D  
Sycamore IL 60178  
USA

#### Local sales and technical support

[www.ledil.com/  
where\\_to\\_buy](http://www.ledil.com/where_to_buy)

#### Shipping locations

Salo, Finland  
Hong Kong, China

#### Distribution Partners

[www.ledil.com/  
where\\_to\\_buy](http://www.ledil.com/where_to_buy)