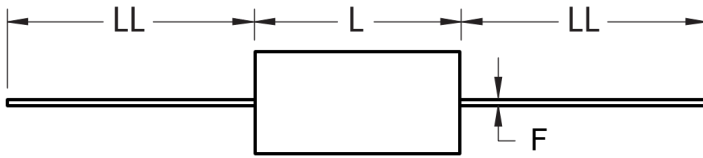
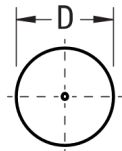


FRONT VIEW



SIDE VIEW



Click [here](#) for the 3D model.

Dimensions

D	19mm NOM
L	44mm NOM
LL	40mm +/-5mm
F	1mm NOM

Packaging Specifications

Packaging	Bulk, Bag
Packaging Quantity	100

General Information

Series	C4C
Dielectric	Metallized Polypropylene
Style	Axial
RoHS	Yes
Lead	Wire Leads
AEC-Q200	No
Typical Component Weight	11.6 g
Miscellaneous	Polyester Tape & Resin Protection.

Specifications

Capacitance	0.047 uF
Capacitance Tolerance	5%
Voltage DC	3000 VDC
Voltage AC	750 VAC
Temperature Range	-40/+85°C
Rated Temperature	70°C
Dissipation Factor	0.05%
Max dV/dt	1250 V/us
ESR	25.7 mOhms (100kHz)
Ripple Current	7 Amps (100kHz 70C), 59 Amps (Peak)