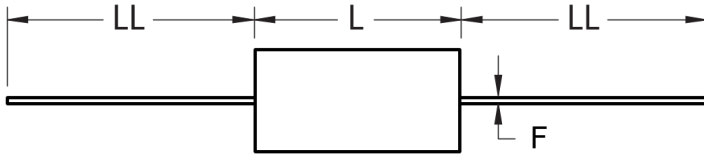
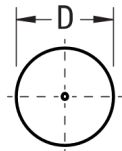


FRONT VIEW



SIDE VIEW



Click [here](#) for the 3D model.

Dimensions

D	28.5mm NOM
L	44mm NOM
LL	40mm +/-5mm
F	1.2mm NOM

Packaging Specifications

Packaging	Bulk, Bag
Packaging Quantity	50

General Information

Series	C4C
Dielectric	Metallized Polypropylene
Style	Axial
RoHS	Yes
Lead	Wire Leads
AEC-Q200	No
Typical Component Weight	25.7 g
Miscellaneous	Polyester Tape & Resin Protection.

Specifications

Capacitance	0.33 uF
Capacitance Tolerance	5%
Voltage DC	2000 VDC
Voltage AC	630 VAC
Temperature Range	-40/+85°C
Rated Temperature	70°C
Dissipation Factor	0.05%
Max dV/dt	700 V/us
ESR	5.9 mOhms (100kHz)
Ripple Current	12 Amps (100kHz 70C), 231 Amps (Peak)