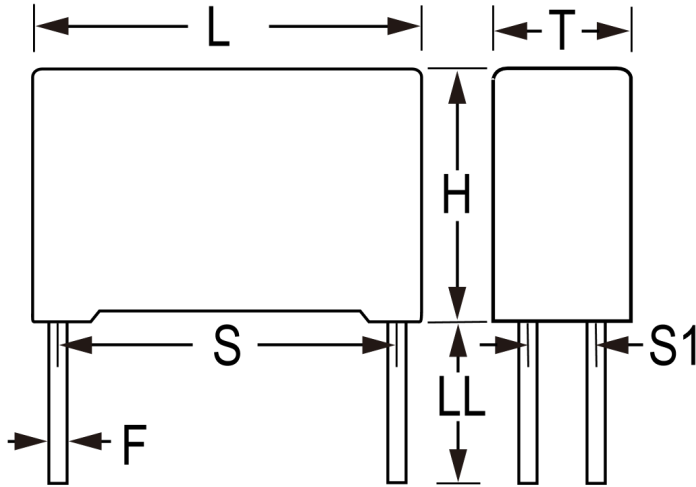


C4AEGBW6100A3NJ

Not for New Design

C4AE, Film, Metallized Polypropylene, DC Link, 100 uF, 5%, 450 VDC, 85°C, 52.5mm



Click [here](#) for the 3D model.

Dimensions

L	57.5mm +0.6/-0.7mm
H	50mm +0.3/-0.7mm
T	35mm +0.5/-0.7mm
S	52.5mm +/-0.4mm
S1	20.3mm +/-0.4mm
LL	6mm -2mm
F	1.2mm NOM
G	0.5mm NOM

Packaging Specifications

Packaging Bulk, Box

General Information

Series	C4AE
Dielectric	Metallized Polypropylene
Style	Radial
RoHS	Yes
Termination	Tin
Lead	4 Wire Leads
AEC-Q200	No
Typical Component Weight	117.5 g
Miscellaneous	Thermal Resistance = 10 C/W.
Notes	Not for new design - the replacement series is: C4AQ.

Specifications

Capacitance	100 uF
Capacitance Tolerance	5%
Voltage DC	450 VDC
Temperature Range	-40/+85°C
Rated Temperature	85°C
Insulation Resistance	300 MOhms
Max dV/dt	7 V/us
ESR	2.6 mOhms (10kHz 70C)
Ripple Current	22 Amps (10kHz 70C), 677 Amps (Peak)
Inductance	35 nH

Statements of suitability for certain applications are based on our knowledge of typical operating conditions for such applications, but are not intended to constitute - and we specifically disclaim - any warranty concerning suitability for a specific customer application or use. This information is intended for use only by customers who have the requisite experience and capability to determine the correct products for their application. Any technical advice inferred from this information or otherwise provided by us with reference to the use of our products is given gratis, and we assume no obligation or liability for the advice given or results obtained.