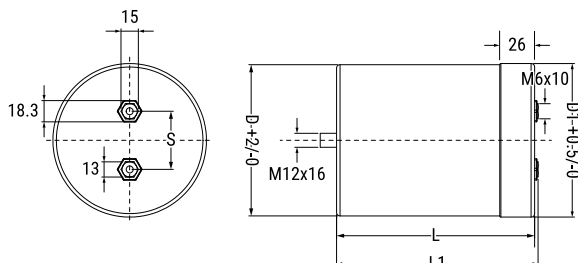


C44U_M, Film, Metallized Polypropylene, DC Link, 2100 uF, 10%, 900 VDC



| General Information | |
|---------------------|--|
| Series: | C44U_M |
| Dielectric: | Metallized Polypropylene |
| Style: | Can |
| Features: | DC Filtering, Energy Storage |
| RoHS: | Yes |
| Lead: | Screw Terminals M6 |
| AEC-Q200: | No |
| Miscellaneous: | Thermal Resistance = 1.8 C/W. Weight = 13100 grams. |

| Dimensions | |
|------------|---------------|
| D | 116mm +2mm |
| L | 273mm +/-2mm |
| L1 | 276mm +/-2mm |
| S | 50mm +/-0.3mm |

| Packaging Specifications | |
|--------------------------|---------------|
| Mounting: | Bolt - M12x16 |
| Packaging: | Bulk, Bag |
| Packaging Quantity: | 4 |

| Specifications | |
|------------------------|---|
| Capacitance: | 2100 uF |
| Capacitance Tolerance: | 10% |
| Voltage DC: | 900 VDC |
| Temperature Range: | -40/+85°C |
| Rated Temperature: | 75°C |
| Insulation Resistance: | 0.01 MOhms |
| Max dV/dt: | 6 V/us |
| Resistance: | 1.5 mOhms (10kHz) |
| Ripple Current: | 100 Amps (10kHz 40C), 12265 Amps (Peak) |
| Inductance: | 80 nH |

Statements of suitability for certain applications are based on our knowledge of typical operating conditions for such applications, but are not intended to constitute - and we specifically disclaim - any warranty concerning suitability for a specific customer application or use. This Information is intended for use only by customers who have the requisite experience and capability to determine the correct products for their application. Any technical advice inferred from this Information or otherwise provided by us with reference to the use of our products is given gratis, and we assume no obligation or liability for the advice given or results obtained.